

## PANEL EXPANSION NOTE

FOR STEEL PANELS < 40' WITH A 1 1/2" TURN DOWN AND 1 1/2" HEM CLEARANCE:

1. 1/4" FOR INSTALLATION TEMPERATURE BELOW 30 DEGREES FARENHEIT
2. 1/2" FOR INSTALLATION TEMPERATURE ABOVE 30 DEGREES FARENHEIT..

FOR STEEL PANELS > 40' WITH A 2" TURN DOWN AND 2" HEM CLEARANCE:

1. 1/4" FOR INSTALLATION TEMPERATURE BELOW 30 DEGREES FARENHEIT.
2. 1/2" FOR INSTALLATION TEMPERATURE ABOVE 30 DEGREES FARENHEIT.

FOR ALUMINUM PANELS - CONTACT DMI

## GUTTER LAP NOTE

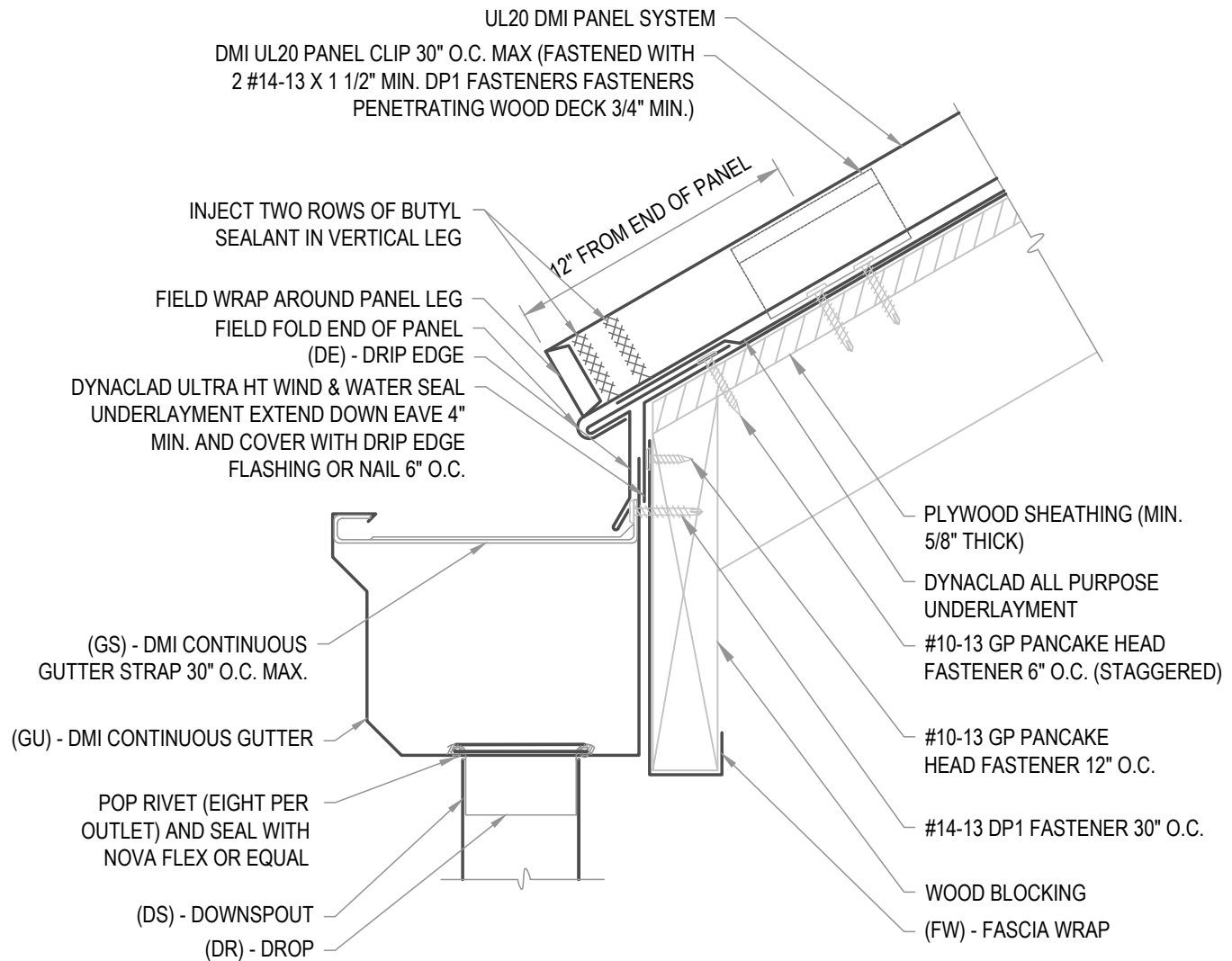
LAP GUTTER 3" MIN W/ 2 ROWS OF APPROVED SEALANT AND POP RIVET JOINT 2" O.C. SET IN AND CAP POP RIVETS IN APPROVED SEALANT.

## FLASHING LAP NOTE

LAP FLASHINGS 2" MIN W/ 1 ROW OF BUTYL SEALANT.

## FULL ICE AND WATER UNDERLAYMENT NOTE

FOR PANEL AREAS WITH FULL ICE AND WATER UNDERLAYMENT: STRIP IN DRIP EDGE WITH 6" STRIP OF APPROVED ICE AND WATER UNDERLAYMENT.



## ARCHITECTURAL EAVE W/ GUTTER

• **PROVEN** • **DEPENDABLE** • **SUSTAINABLE** •

**METAL ENVELOPE SYSTEMS SINCE 1988**

[WWW.DMIMETALS.COM](http://WWW.DMIMETALS.COM)

**UL20-01-00-WA**

Issue/Rev Date:

Scale:

**02/21**

**3"=1'-0"**

### PANEL EXPANSION NOTE

FOR STEEL PANELS < 40' WITH A 1 1/2" TURN DOWN AND 1 1/2" HEM CLEARANCE:

1. 1/4" FOR INSTALLATION TEMPERATURE BELOW 30 DEGREES FARENHEIT
2. 1/2" FOR INSTALLATION TEMPERATURE ABOVE 30 DEGREES FARENHEIT..

FOR STEEL PANELS > 40' WITH A 2" TURN DOWN AND 2" HEM CLEARANCE:

1. 1/4" FOR INSTALLATION TEMPERATURE BELOW 30 DEGREES FARENHEIT.
2. 1/2" FOR INSTALLATION TEMPERATURE ABOVE 30 DEGREES FARENHEIT.

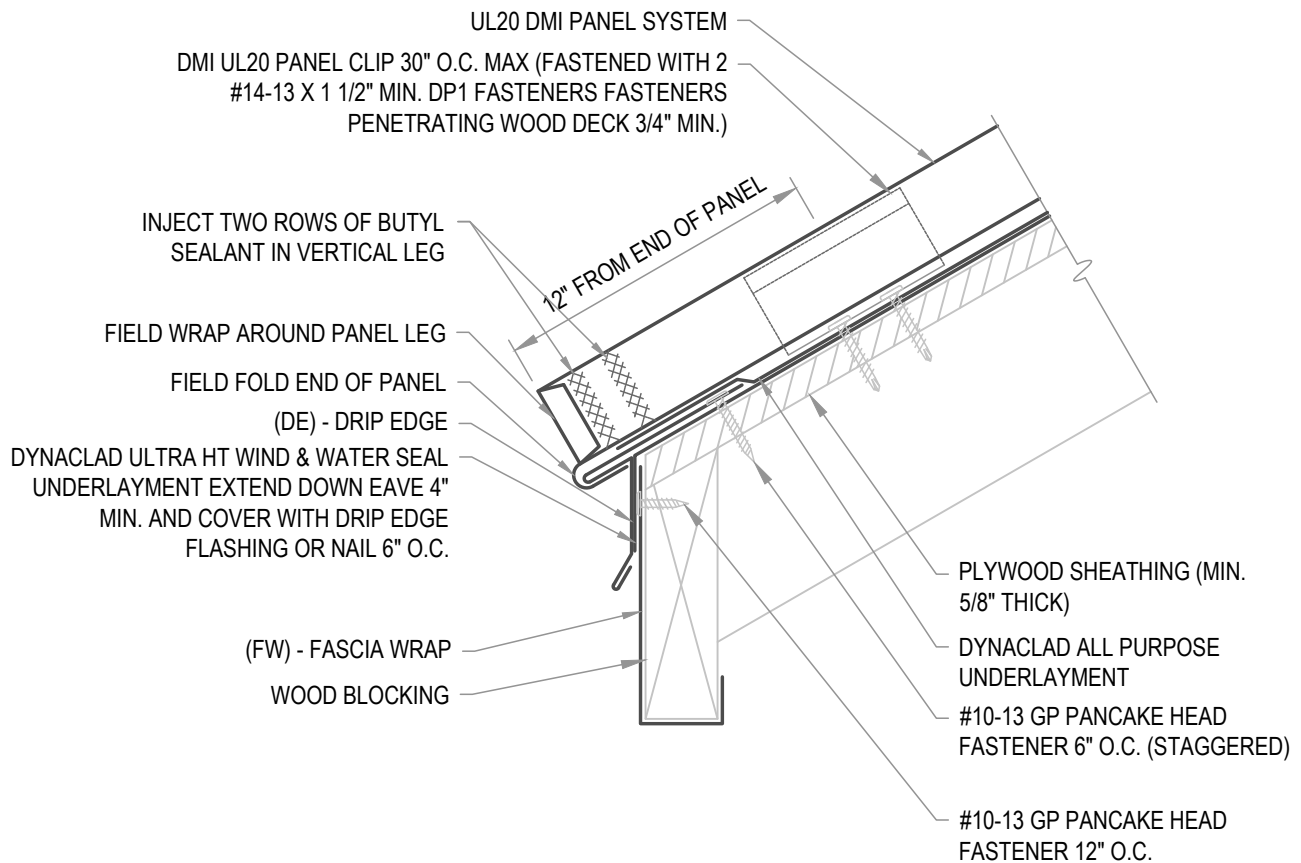
FOR ALUMINUM PANELS - CONTACT DMI

### FLASHING LAP NOTE

LAP FLASHINGS 2" MIN W/ 1 ROW OF BUTYL SEALANT.

### FULL ICE AND WATER UNDERLAYMENT NOTE

FOR PANEL AREAS WITH FULL ICE AND WATER UNDERLAYMENT: STRIP IN DRIP EDGE WITH 6" STRIP OF APPROVED ICE AND WATER UNDERLAYMENT.



## ARCHITECTURAL EAVE W/ FASCIA WRAP

• **PROVEN** • **DEPENDABLE** • **SUSTAINABLE** •

**METAL ENVELOPE SYSTEMS SINCE 1988**

[WWW.DMIMETALS.COM](http://WWW.DMIMETALS.COM)

Detail:

**UL20-01-01-WA**

Issue/Rev Date:

**02/21**

Scale:

**3"=1'-0"**

## PANEL EXPANSION NOTE

FOR STEEL PANELS < 40' WITH A 1 1/2" TURN DOWN AND 1 1/2" HEM CLEARANCE:

1. 1/4" FOR INSTALLATION TEMPERATURE BELOW 30 DEGREES FARENHEIT
2. 1/2" FOR INSTALLATION TEMPERATURE ABOVE 30 DEGREES FARENHEIT..

FOR STEEL PANELS > 40' WITH A 2" TURN DOWN AND 2" HEM CLEARANCE:

1. 1/4" FOR INSTALLATION TEMPERATURE BELOW 30 DEGREES FARENHEIT.
2. 1/2" FOR INSTALLATION TEMPERATURE ABOVE 30 DEGREES FARENHEIT.

FOR ALUMINUM PANELS - CONTACT DMI

## GUTTER NOTES

LAP GUTTER 3" MIN W/ 2 ROWS OF APPROVED SEALANT AND POP RIVET JOINT 2" O.C. SET IN AND CAP POP RIVETS IN APPROVED SEALANT.

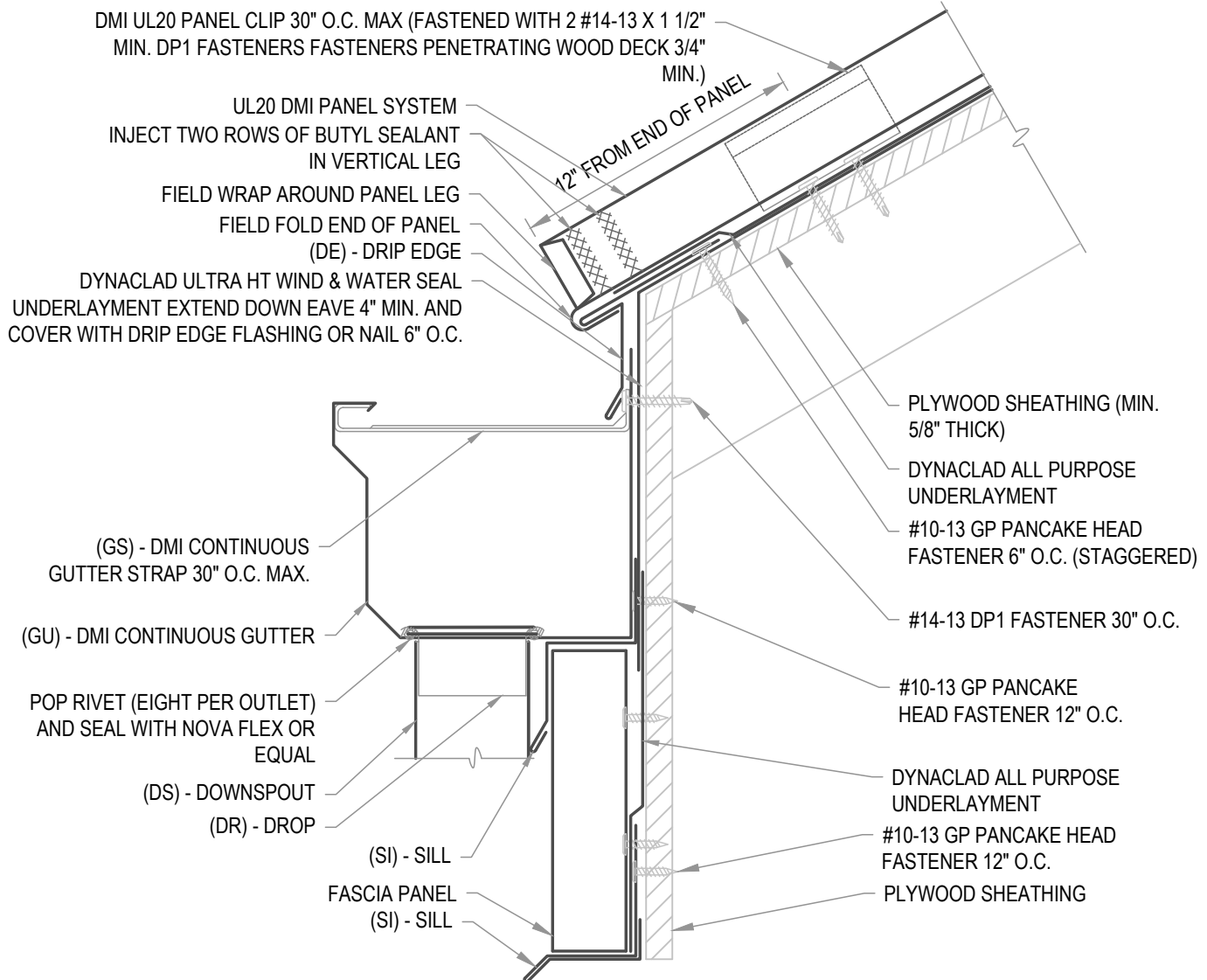
EXPANSION JOINT REQUIRED FOR EVERY 50'-0" OF GUTTER (REFER TO MISCELLANEOUS DETAILS)

## FLASHING LAP NOTE

LAP FLASHINGS 2" MIN W/ 1 ROW OF BUTYL SEALANT.

## FULL ICE AND WATER UNDERLAYMENT NOTE

FOR PANEL AREAS WITH FULL ICE AND WATER UNDERLAYMENT: STRIP IN DRIP EDGE WITH 6" STRIP OF APPROVED ICE AND WATER UNDERLAYMENT.



## ARCHITECTURAL EAVE W/ GUTTER

• **PROVEN** • **DEPENDABLE** • **SUSTAINABLE** •

**METAL ENVELOPE SYSTEMS SINCE 1988**

WWW.DMIMETALS.COM

Detail:

**UL20-01-02-WA**

Issue/Rev Date:

**02/21**

Scale:

**3"=1'-0"**

### PANEL EXPANSION NOTE

FOR STEEL PANELS < 40' WITH A 1 1/2" TURN DOWN AND 1 1/2" HEM CLEARANCE:

1. 1/4" FOR INSTALLATION TEMPERATURE BELOW 30 DEGREES FARENHEIT
2. 1/2" FOR INSTALLATION TEMPERATURE ABOVE 30 DEGREES FARENHEIT..

FOR STEEL PANELS > 40' WITH A 2" TURN DOWN AND 2" HEM CLEARANCE:

1. 1/4" FOR INSTALLATION TEMPERATURE BELOW 30 DEGREES FARENHEIT.
2. 1/2" FOR INSTALLATION TEMPERATURE ABOVE 30 DEGREES FARENHEIT.

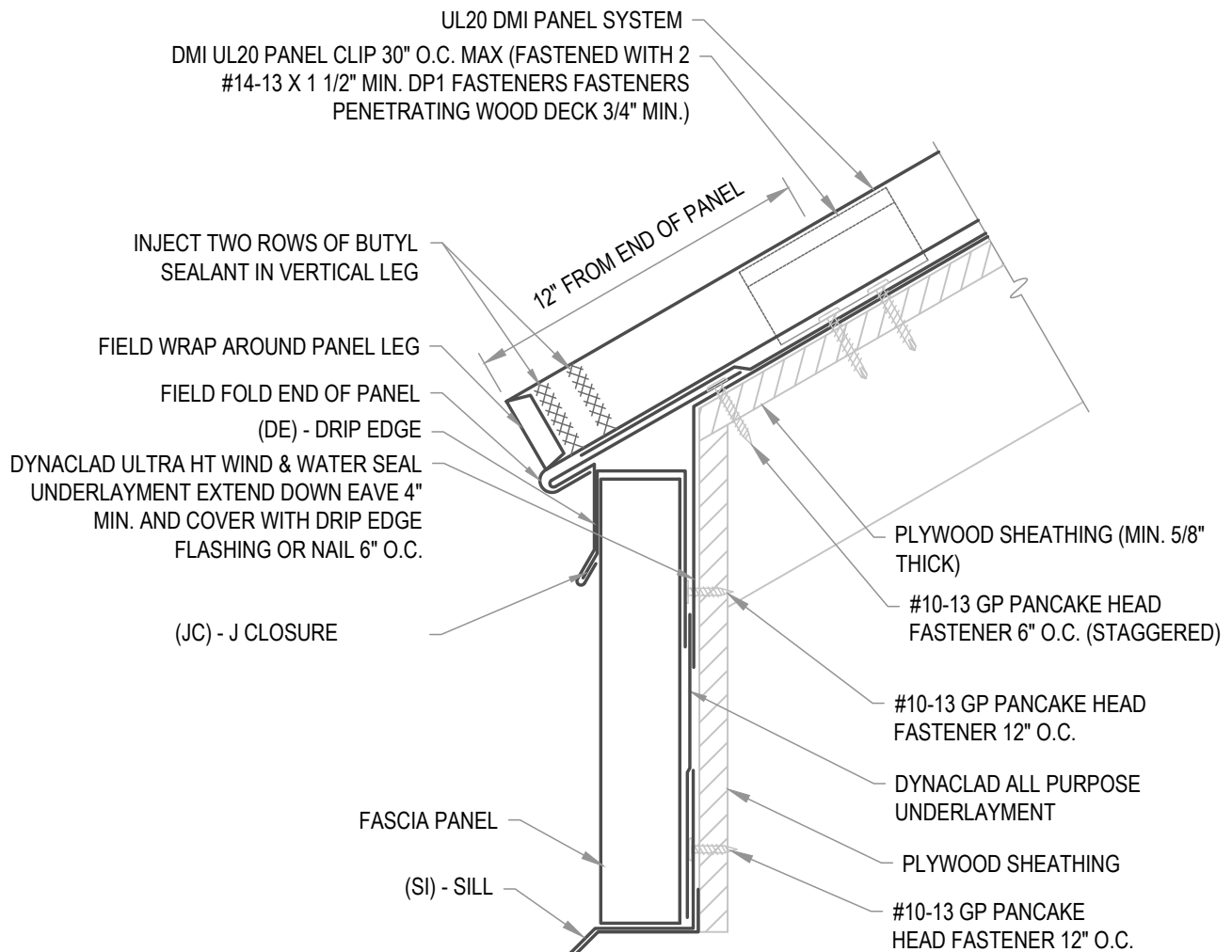
FOR ALUMINUM PANELS - CONTACT DMI

### FLASHING LAP NOTE

LAP FLASHINGS 2" MIN W/ 1 ROW OF BUTYL SEALANT.

### FULL ICE AND WATER UNDERLAYMENT NOTE

FOR PANEL AREAS WITH FULL ICE AND WATER UNDERLAYMENT: STRIP IN DRIP EDGE WITH 6" STRIP OF APPROVED ICE AND WATER UNDERLAYMENT.



## ARCHITECTURAL EAVE W/ FASCIA PANEL

• **PROVEN** • **DEPENDABLE** • **SUSTAINABLE** •

**METAL ENVELOPE SYSTEMS SINCE 1988**

WWW.DMIMETALS.COM

UL20-01-03-WA

Issue/Rev Date:

Scale:

02/21

3"=1'-0"

### PANEL EXPANSION NOTE

FOR STEEL PANELS < 40' WITH A 1 1/2" TURN DOWN AND 1 1/2" HEM CLEARANCE:

1. 1/4" FOR INSTALLATION TEMPERATURE BELOW 30 DEGREES FARENHEIT
2. 1/2" FOR INSTALLATION TEMPERATURE ABOVE 30 DEGREES FARENHEIT..

FOR STEEL PANELS > 40' WITH A 2" TURN DOWN AND 2" HEM CLEARANCE:

1. 1/4" FOR INSTALLATION TEMPERATURE BELOW 30 DEGREES FARENHEIT.
2. 1/2" FOR INSTALLATION TEMPERATURE ABOVE 30 DEGREES FARENHEIT.

FOR ALUMINUM PANELS - CONTACT DMI

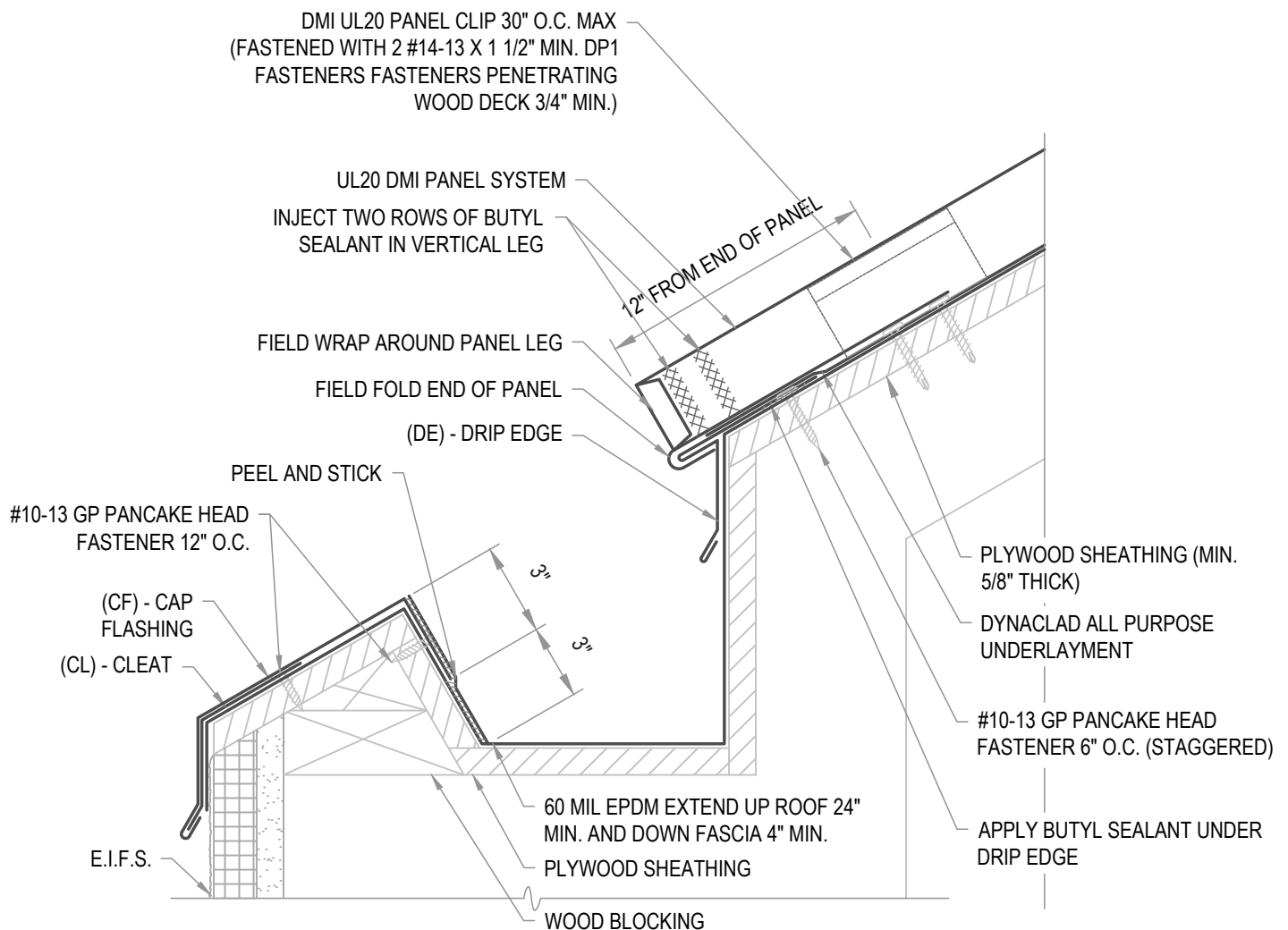
INTERIOR GUTTER DESIGN TO BE PER SMACNA GUIDELINES

### FLASHING LAP NOTE

LAP FLASHINGS 2" MIN W/ 1 ROW OF BUTYL SEALANT.

### FULL ICE AND WATER UNDERLAYMENT NOTE

FOR PANEL AREAS WITH FULL ICE AND WATER UNDERLAYMENT: STRIP IN DRIP EDGE WITH 6" STRIP OF APPROVED ICE AND WATER UNDERLAYMENT.



## ARCHITECTURAL EAVE

• **PROVEN** • **DEPENDABLE** • **SUSTAINABLE** •

**METAL ENVELOPE SYSTEMS SINCE 1988**

[WWW.DMIMETALS.COM](http://WWW.DMIMETALS.COM)

Detail:

**UL20-01-04-WA**

Issue/Rev Date:

**02/21**

Scale:

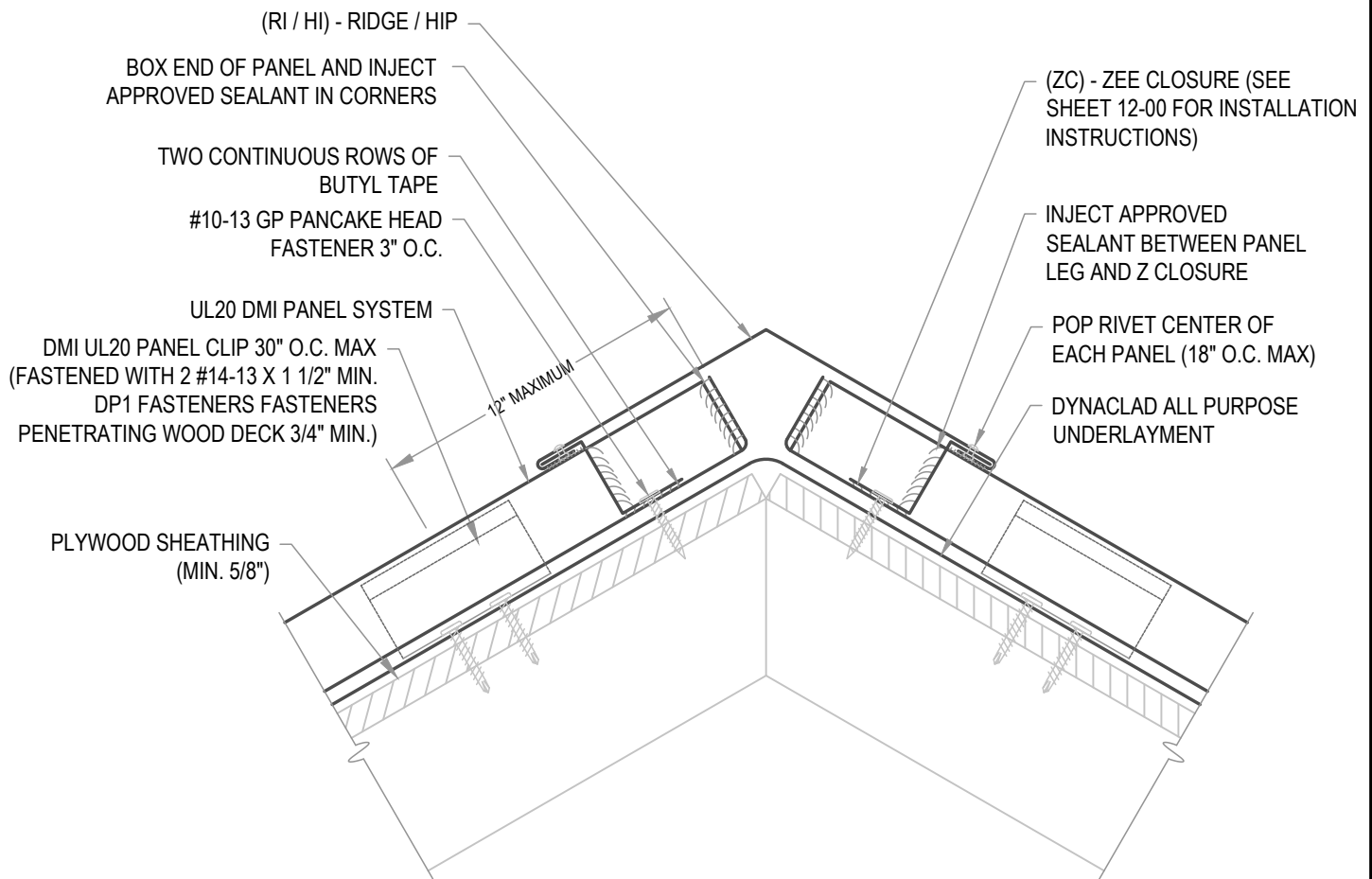
**3"=1'-0"**

#### EXPANSION NOTE

RIDGES EXCEEDING 100'-0" IN LENGTH REQUIRE THE USE OF A 6" COVER PLATE.

#### FLASHING LAP NOTE

LAP RIDGE/HIP 4" MIN W/ 2 ROWS OF BUTYL SEALANT.  
DO NOT POP RIVET LAPPED FLASHINGS.



### ARCHITECTURAL RIDGE / HIP

• **PROVEN** • **DEPENDABLE** • **SUSTAINABLE** •

**METAL ENVELOPE SYSTEMS SINCE 1988**

[WWW.DMIMETALS.COM](http://WWW.DMIMETALS.COM)

Detail:

**UL20-02-00-WA**

Issue/Rev Date:

**02/21**

Scale:

**3"=1'-0"**

#### EXPANSION NOTE

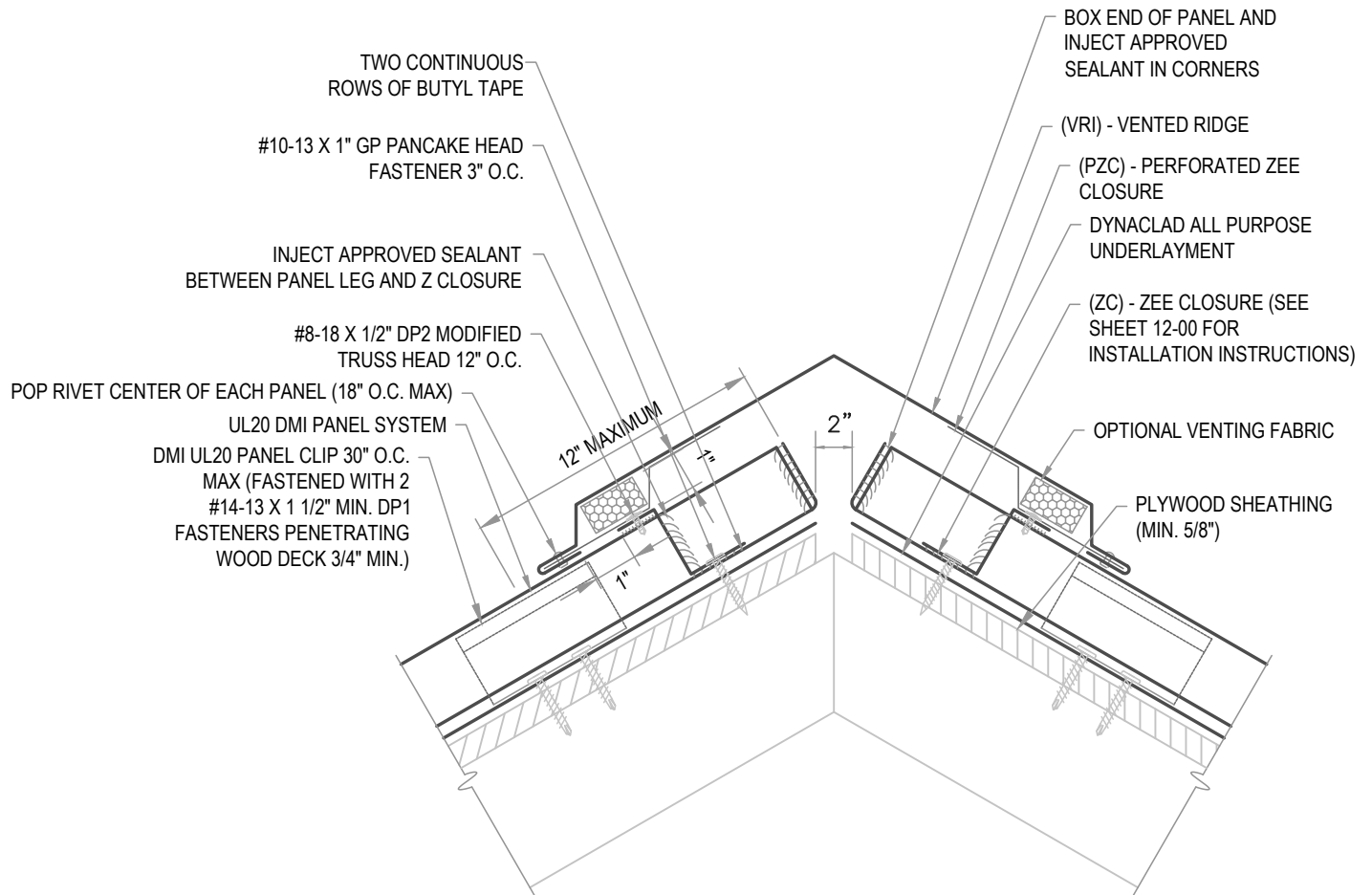
RIDGES EXCEEDING 100'-0" IN LENGTH REQUIRE THE USE OF A 6" COVER PLATE.

#### FLASHING LAP NOTE

LAP RIDGE/HIP 4" MIN W/ 2 ROWS OF BUTYL SEALANT.  
DO NOT POP RIVET LAPPED FLASHINGS.

#### VENTILATION NOTE

DMI PERFORATED Z CLOSURE PROVIDES 23% NET FREE AIR MOVEMENT.  
HIP CONDITIONS CAN NOT BE VENTED.



## ARCHITECTURAL VENTED RIDGE

• **PROVEN** • **DEPENDABLE** • **SUSTAINABLE** •

**METAL ENVELOPE SYSTEMS SINCE 1988**

[WWW.DMIMETALS.COM](http://WWW.DMIMETALS.COM)

Detail:

**UL20-02-01-WA**

Issue/Rev Date:

**02/21**

Scale:

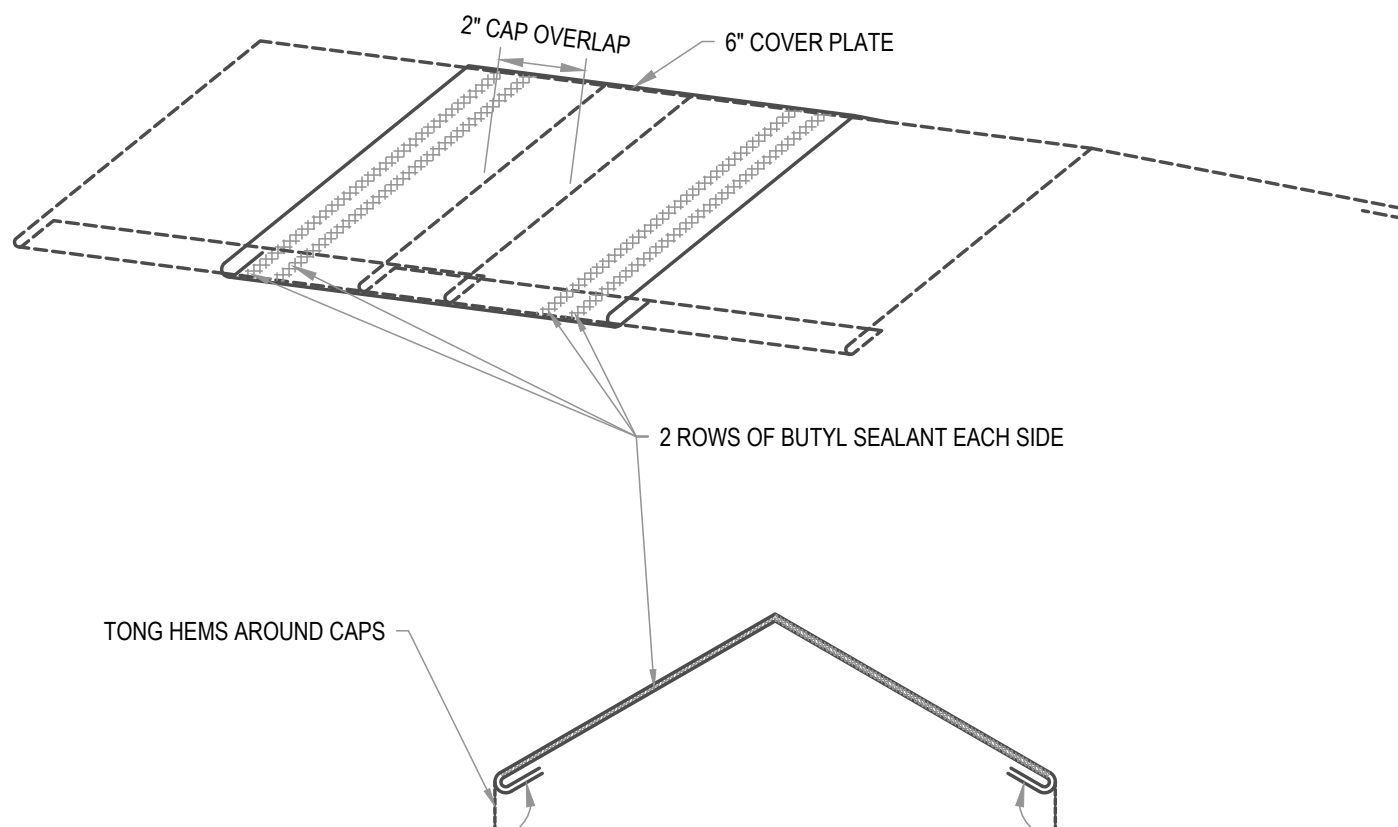
**3"=1'-0"**

#### EXPANSION NOTE

RIDGES EXCEEDING 100'-0" IN LENGTH REQUIRE THE USE OF A 6" COVER PLATE.

#### FLASHING LAP NOTE

LAP RIDGE/HIP 4" MIN W/ 2 ROWS OF BUTYL SEALANT.  
DO NOT POP RIVET LAPPED FLASHINGS.



## ARCHITECTURAL RIDGE COVER PLATE

• **PROVEN** • **DEPENDABLE** • **SUSTAINABLE** •

**METAL ENVELOPE SYSTEMS SINCE 1988**

[WWW.DMIMETALS.COM](http://WWW.DMIMETALS.COM)

Detail:

**UL20-02-02-WA**

Issue/Rev Date:

**02/21**

Scale:

**3"=1'-0"**



### PANEL EXPANSION NOTE

FOR STEEL PANELS < 40' WITH A 1 1/2" TURN DOWN AND 1 1/2" HEM CLEARANCE:

1. 1/4" FOR INSTALLATION TEMPERATURE BELOW 30 DEGREES FARENHEIT
2. 1/2" FOR INSTALLATION TEMPERATURE ABOVE 30 DEGREES FARENHEIT..

FOR STEEL PANELS > 40' WITH A 2" TURN DOWN AND 2" HEM CLEARANCE:

1. 1/4" FOR INSTALLATION TEMPERATURE BELOW 30 DEGREES FARENHEIT.
2. 1/2" FOR INSTALLATION TEMPERATURE ABOVE 30 DEGREES FARENHEIT.

PANELS EXCEEDING 40' ADD 1" PER 10' TO EACH SIDE.

FOR ALUMINUM PANELS - CONTACT DMI

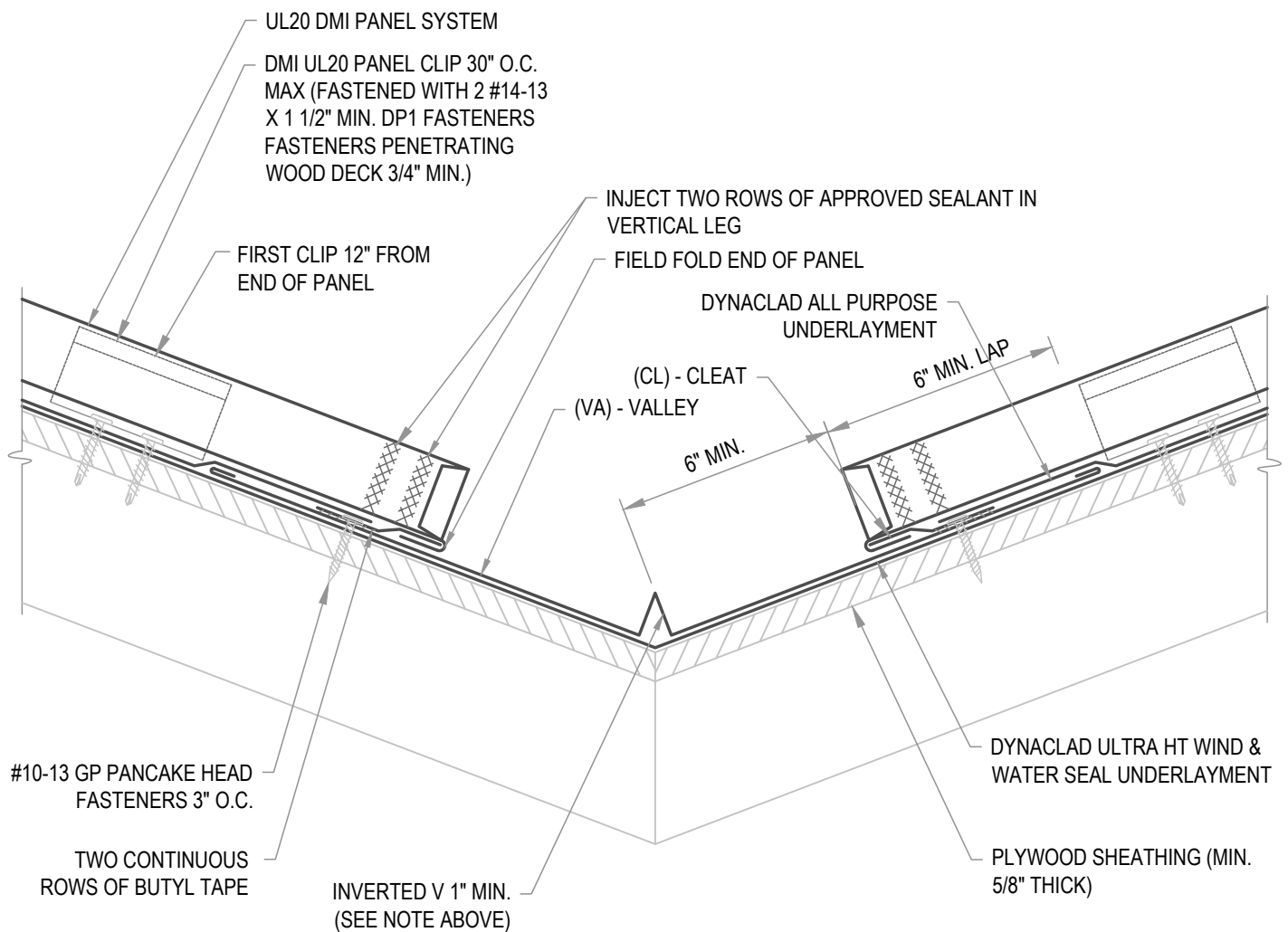
NOP POP RIVETS OR FASTENERS ON EXPOSED WEATHER SIDE OF CLEAT.

### INVERTED V NOTE

ON ROOF PITCHES OVER 6:12 OR PANEL LENGTHS EXCEEDING 60' OR ON DISSIMILAR PITCHES INCREASE THE INVERTED V IN THE VALLEY TO 2".

### FLASHING LAP NOTE

LAP VALLEY 8" MIN. WITH 2 ROWS OF APPROVED SEALANT.



## ARCHITECTURAL VALLEY

• **PROVEN** • **DEPENDABLE** • **SUSTAINABLE** •

**METAL ENVELOPE SYSTEMS SINCE 1988**

[WWW.DMIMETALS.COM](http://WWW.DMIMETALS.COM)

Detail:

**UL20-03-00-WA**

Issue/Rev Date:

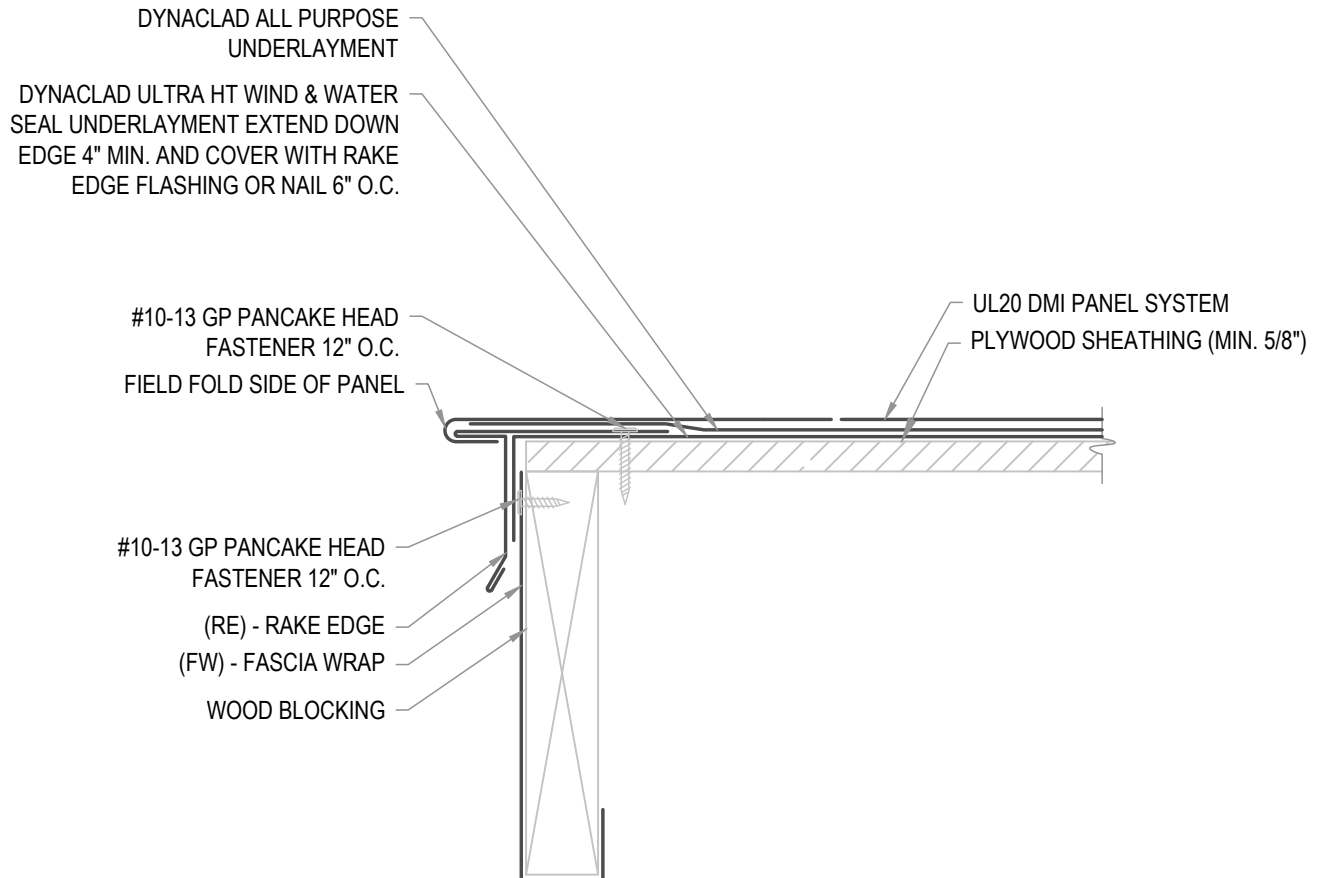
**02/21**

Scale:

**3"=1'-0"**

#### FLASHING LAP NOTE

LAP RAKE EDGE AND FASCIA 2" MINIMUM WITH 1 ROW OF BUTYL SEALANT.



### ARCHITECTURAL RAKE EDGE

• **PROVEN** • **DEPENDABLE** • **SUSTAINABLE** •

**METAL ENVELOPE SYSTEMS SINCE 1988**

[WWW.DMIMETALS.COM](http://WWW.DMIMETALS.COM)

Detail:

**UL20-04-00-WA**

Issue/Rev Date:

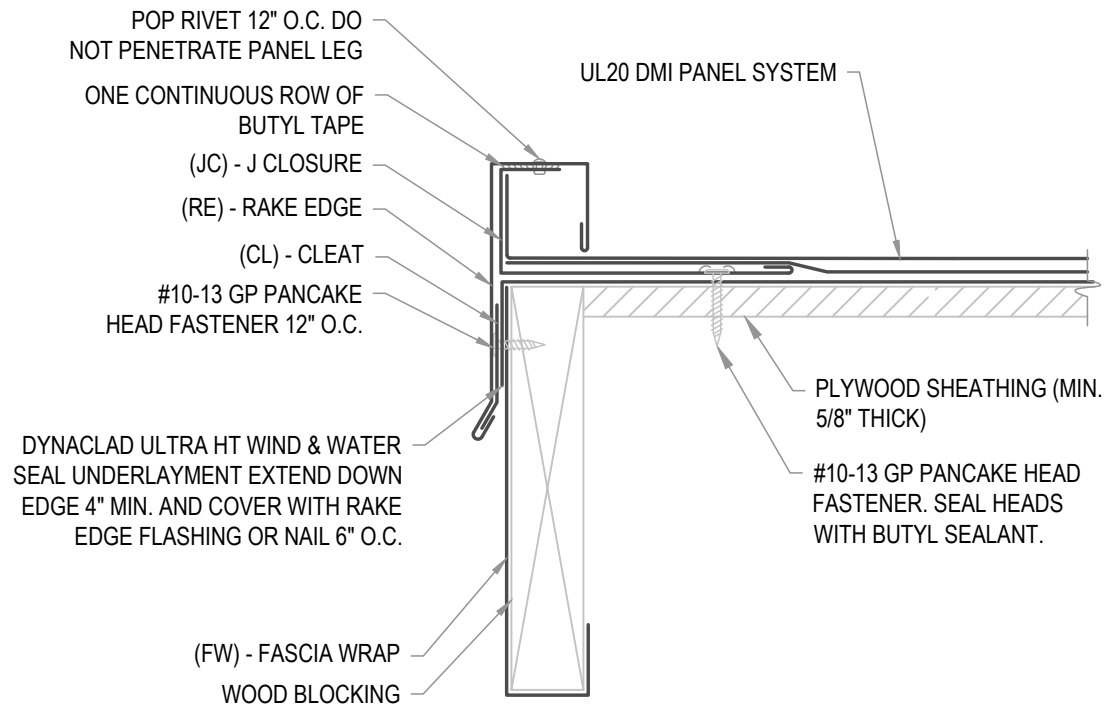
**02/21**

Scale:

**3"=1'-0"**

# FLASHING LAP NOTE

LAP RAKE EDGE AND FASCIA 2" MINIMUM WITH 2 ROWS OF BUTYL SEALANT.



## ARCHITECTURAL RAKE EDGE

• **PROVEN** • **DEPENDABLE** • **SUSTAINABLE** •

**METAL ENVELOPE SYSTEMS SINCE 1988**

[WWW.DMIMETALS.COM](http://WWW.DMIMETALS.COM)

Detail:

**UL20-04-01-WA**

Issue/Rev Date:

**02/21**

Scale:

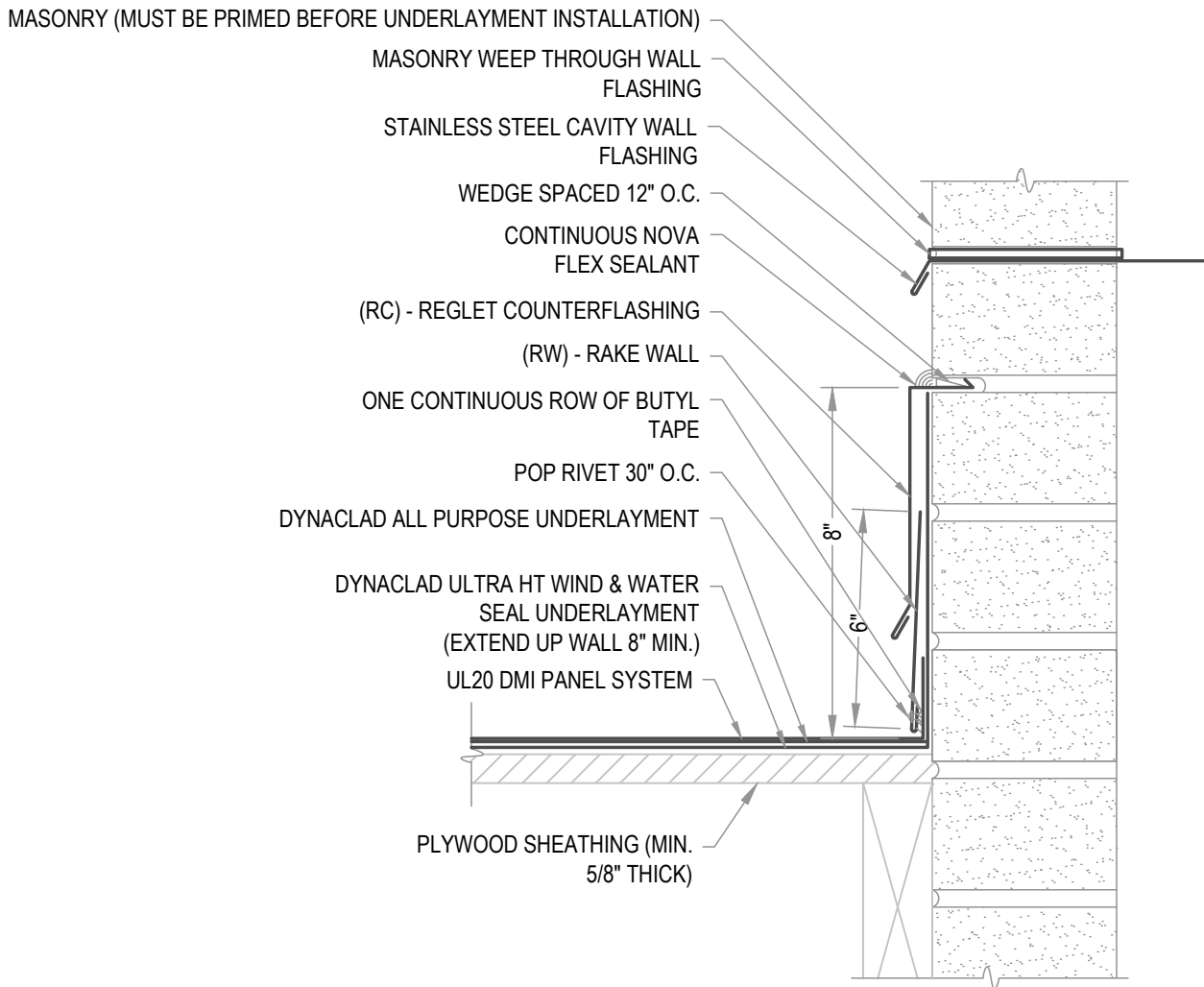
**3"=1'-0"**

#### NOTE

REGLET FLASHING TO BE INSTALLED BELOW ALL WEEP HOLES.  
SURFACED MOUNT COUNTERFLASHINGS NOT ACCEPTABLE..

#### FLASHING LAP NOTE

LAP RAKE WALL REGLET 2" MINIMUM WITH 2 ROWS OF BUTYL SEALANT.



## ARCHITECTURAL RAKE WALL

• **PROVEN** • **DEPENDABLE** • **SUSTAINABLE** •

**METAL ENVELOPE SYSTEMS SINCE 1988**

[WWW.DMIMETALS.COM](http://WWW.DMIMETALS.COM)

Detail:

**UL20-05-00-WA**

Issue/Rev Date:

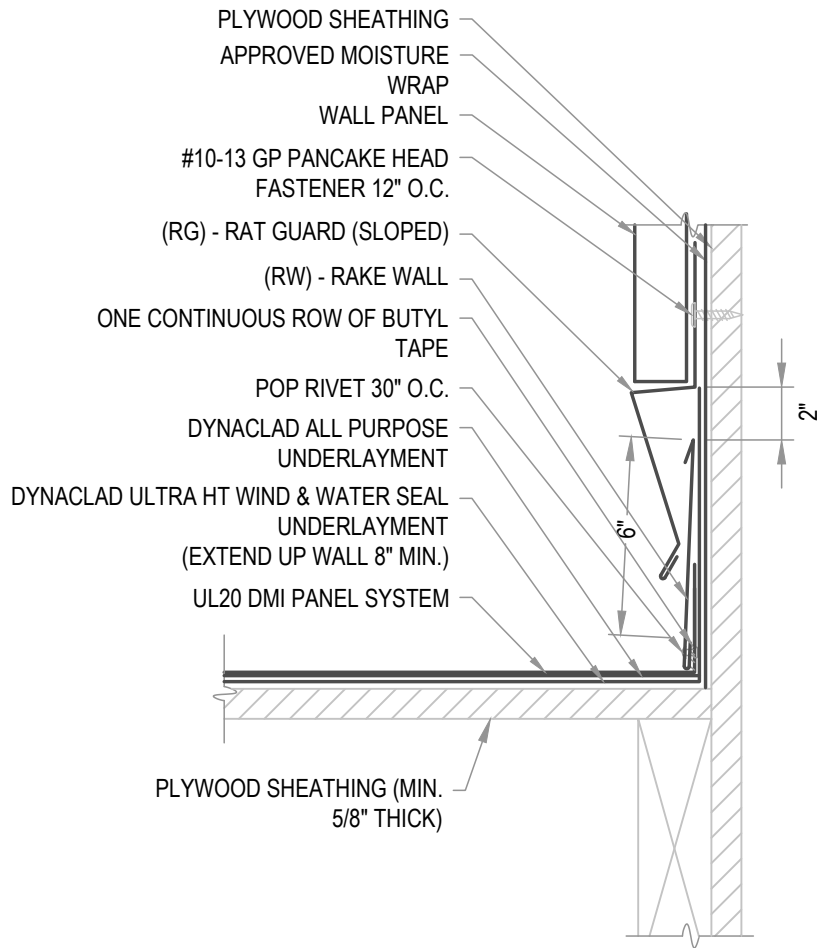
**02/21**

Scale:

**3"=1'-0"**

### FLASHING LAP NOTE

LAP RAKE WALL AND RAT GUARD (SLOPED) 2" MINIMUM WITH 2 ROWS OF BUTYL SEALANT.



## ARCHITECTURAL RAKE WALL

• **PROVEN** • **DEPENDABLE** • **SUSTAINABLE** •

**METAL ENVELOPE SYSTEMS SINCE 1988**

[WWW.DMIMETALS.COM](http://WWW.DMIMETALS.COM)

Detail:

**UL20-05-01-WA**

Issue/Rev Date:

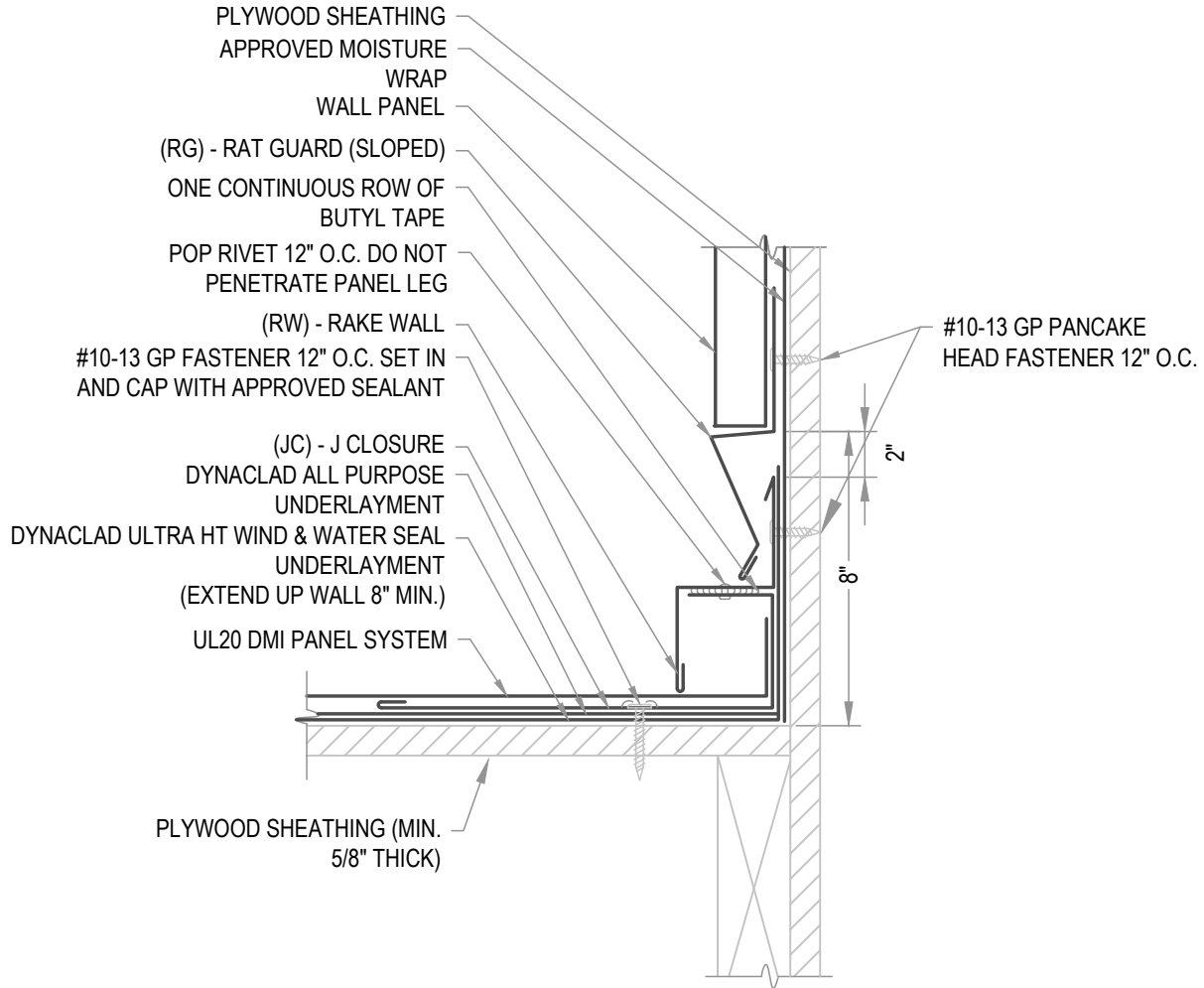
**02/21**

Scale:

**3"=1'-0"**

### FLASHING LAP NOTE

LAP RAKE WALL AND RAT GUARD (SLOPED) 2" MINIMUM WITH 2 ROWS OF BUTYL SEALANT.



## ARCHITECTURAL RAKE WALL

• **PROVEN** • **DEPENDABLE** • **SUSTAINABLE** •

**METAL ENVELOPE SYSTEMS SINCE 1988**

[WWW.DMIMETALS.COM](http://WWW.DMIMETALS.COM)

Detail:

**UL20-05-02-WA**

Issue/Rev Date:

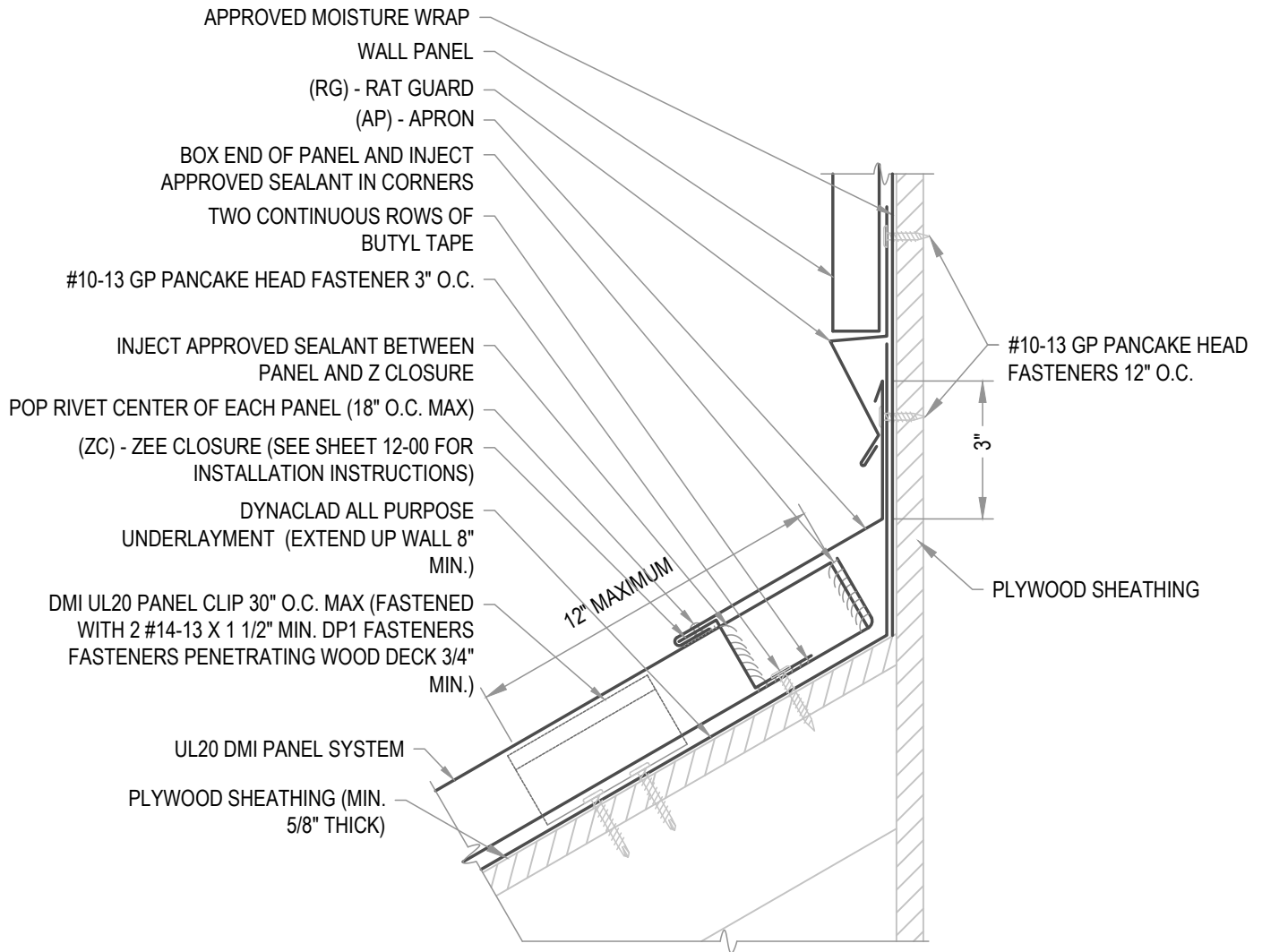
**02/21**

Scale:

**3"=1'-0"**

#### FLASHING LAP NOTE

LAP APRON AND RAT GUARD (SLOPED) 2" MINIMUM WITH 2 ROWS OF BUTYL SEALANT.



### ARCHITECTURAL APRON W/ WALL PANEL

• **PROVEN** • **DEPENDABLE** • **SUSTAINABLE** •

**METAL ENVELOPE SYSTEMS SINCE 1988**

WWW.DMIMETALS.COM

Detail:

**UL20-06-00-WA**

Issue/Rev Date:

**02/21**

Scale:

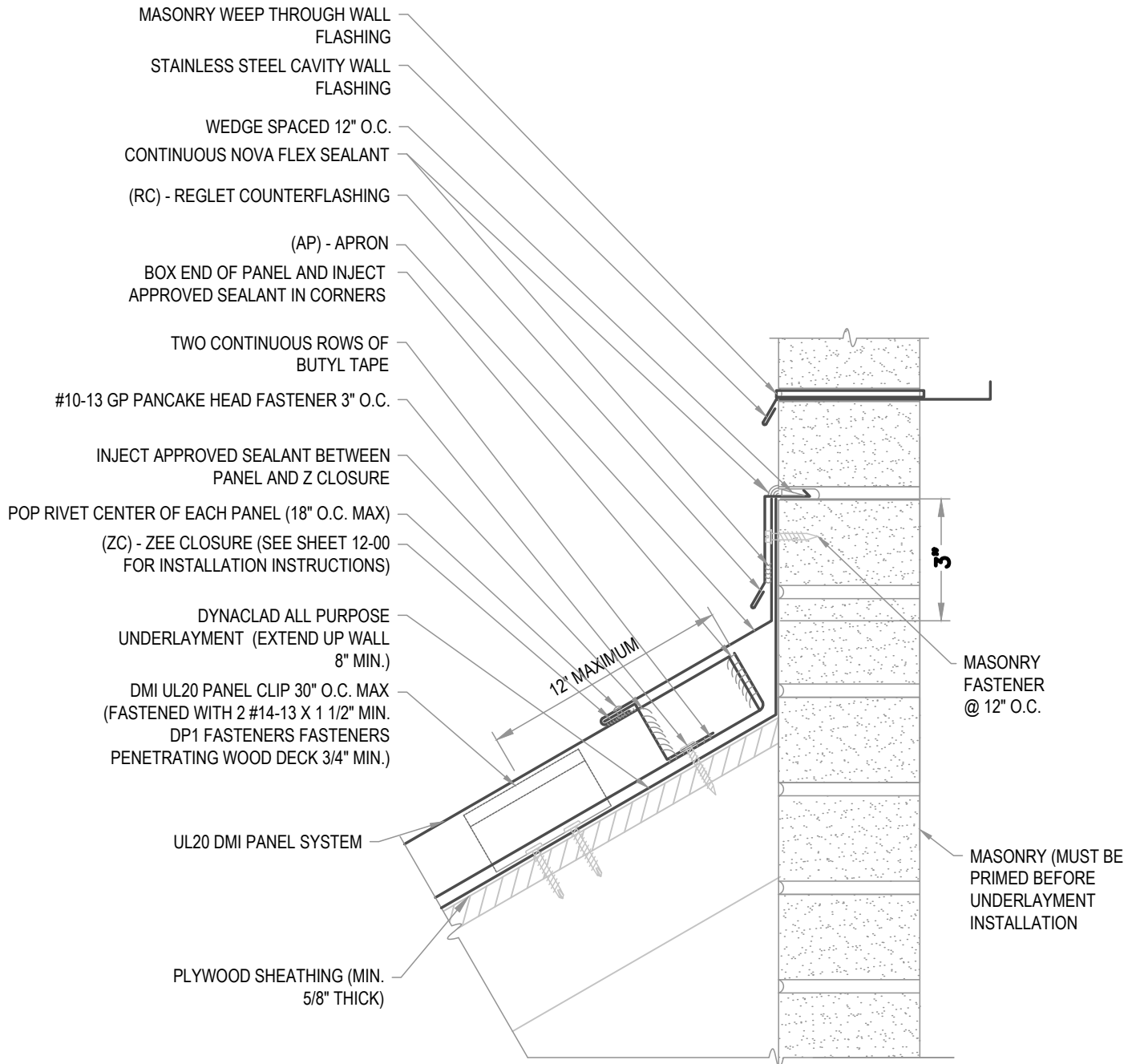
**3"=1'-0"**

#### NOTE

REGLET FLASHING TO BE INSTALLED BELOW ALL WEEP HOLES.  
SURFACED MOUNT COUNTERFLASHINGS NOT ACCEPTABLE.

#### FLASHING LAP NOTE

LAP APRON AND REGLET 2" MINIMUM WITH 2 ROWS OF BUTYL SEALANT.



## ARCHITECTURAL APRON

• **PROVEN** • **DEPENDABLE** • **SUSTAINABLE** •

**METAL ENVELOPE SYSTEMS SINCE 1988**

[WWW.DMIMETALS.COM](http://WWW.DMIMETALS.COM)

Detail:

**UL20-06-01-WA**

Issue/Rev Date:

**02/21**

Scale:

**3"=1'-0"**

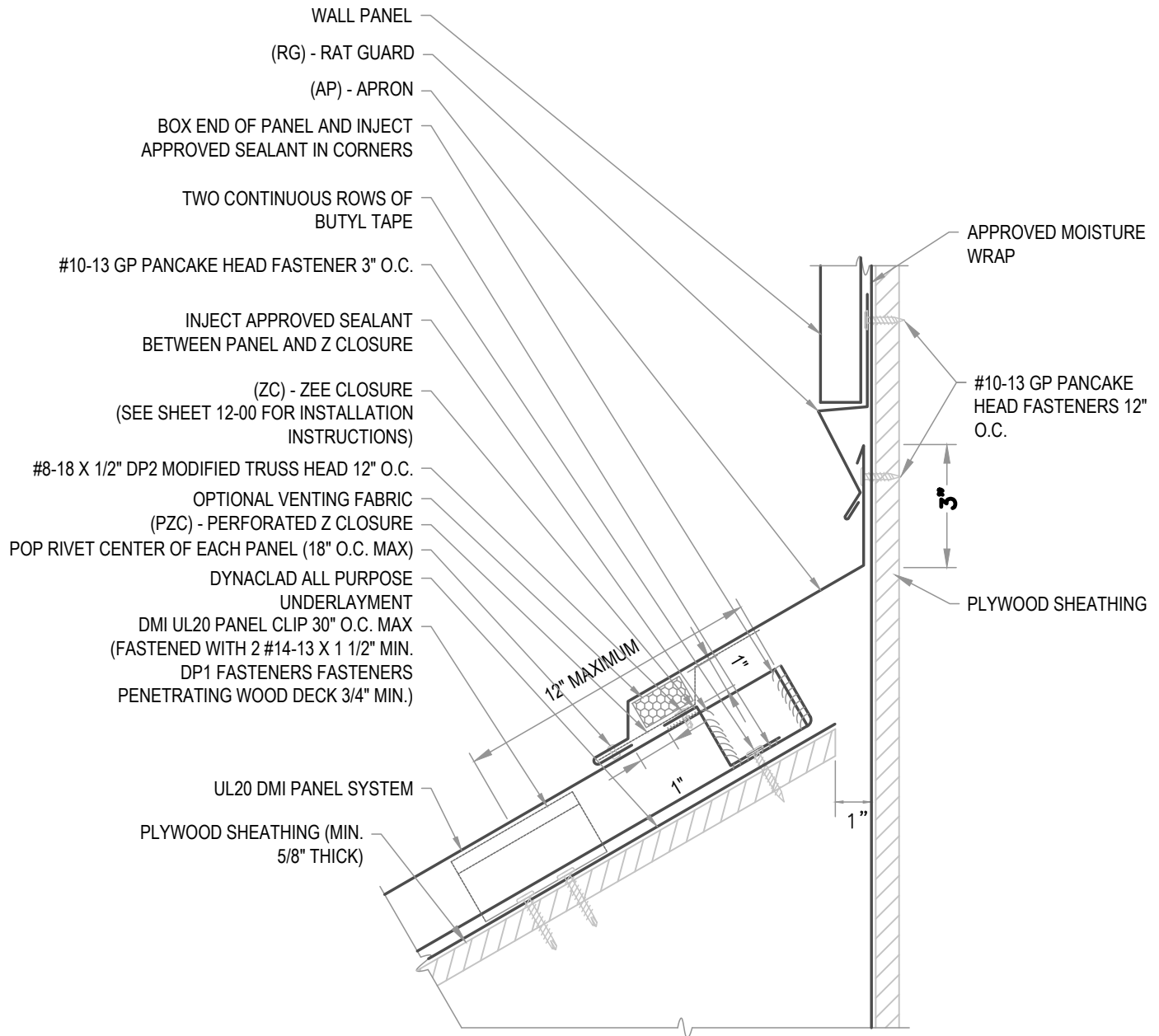


#### FLASHING LAP NOTE

LAP APRON AND RAT GUARD (SLOPED) 2" MIN W/ 2 ROWS OF BUTYL SEALANT.  
DO NOT POP RIVET LAPPED FLASHINGS.

#### VENTILATION NOTE

DMI PERFORATED Z CLOSURE PROVIDES 23% NET FREE AIR MOVEMENT.



### ARCHITECTURAL VENTED APRON

• **PROVEN** • **DEPENDABLE** • **SUSTAINABLE** •

**METAL ENVELOPE SYSTEMS SINCE 1988**

WWW.DMIMETALS.COM

Detail:

**UL20-06-02-WA**

Issue/Rev Date:

**02/21**

Scale:

**3"=1'-0"**

#### NOTE

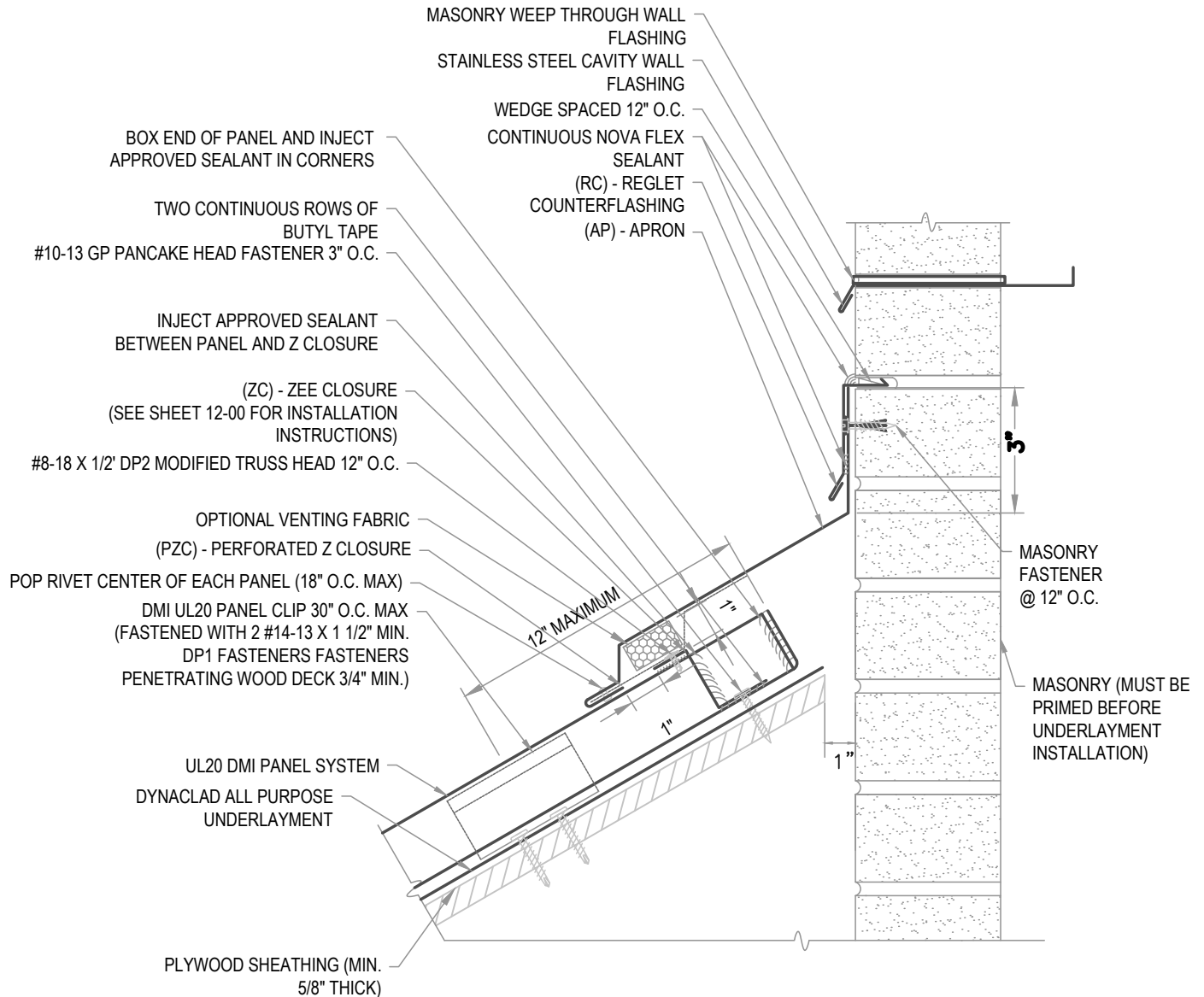
REGLET FLASHING TO BE INSTALLED BELOW ALL WEEP HOLES.  
SURFACED MOUNT COUNTERFLASHINGS NOT ACCEPTABLE.

#### FLASHING LAP NOTE

LAP APRON AND RAT GUARD (SLOPED) 2" MIN W/ 2 ROWS OF BUTYL SEALANT.  
DO NOT POP RIVET LAPPED FLASHINGS.

#### VENTILATION NOTE

DMI PERFORATED Z CLOSURE PROVIDES 23% NET FREE AIR MOVEMENT.



## ARCHITECTURAL VENTED APRON

• **PROVEN** • **DEPENDABLE** • **SUSTAINABLE** •

**METAL ENVELOPE SYSTEMS SINCE 1988**

WWW.DMIMETALS.COM

Detail:

**UL20-06-03-WA**

Issue/Rev Date:

**02/21**

Scale:

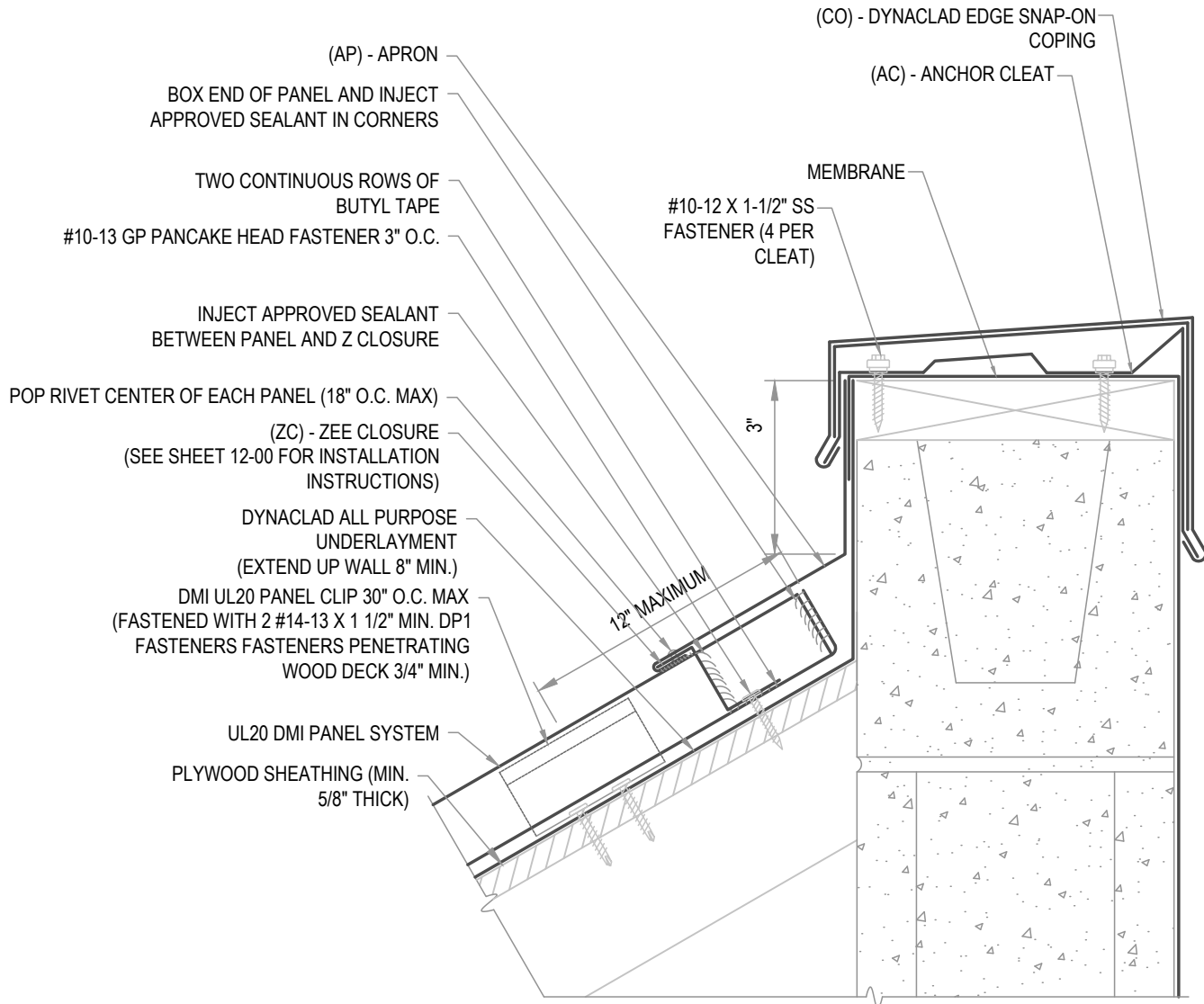
**3"=1'-0"**

#### FLASHING LAP NOTE

LAP APRON AND REGLET 2" MINIMUM WITH 2 ROWS OF BUTYL SEALANT.

#### COPING NOTE

SEE DMI DYNACLAD INSTALLATION GUIDE FOR COMPLETE FASTENING INSTALLATION  
INFORMATION FOR ES-1 RATED SNAP-ON COPING



### ARCHITECTURAL APRON W/ COPING

• **PROVEN** • **DEPENDABLE** • **SUSTAINABLE** •

**METAL ENVELOPE SYSTEMS SINCE 1988**

[WWW.DMIMETALS.COM](http://WWW.DMIMETALS.COM)

Detail:

**UL20-06-04-WA**

Issue/Rev Date:

**02/21**

Scale:

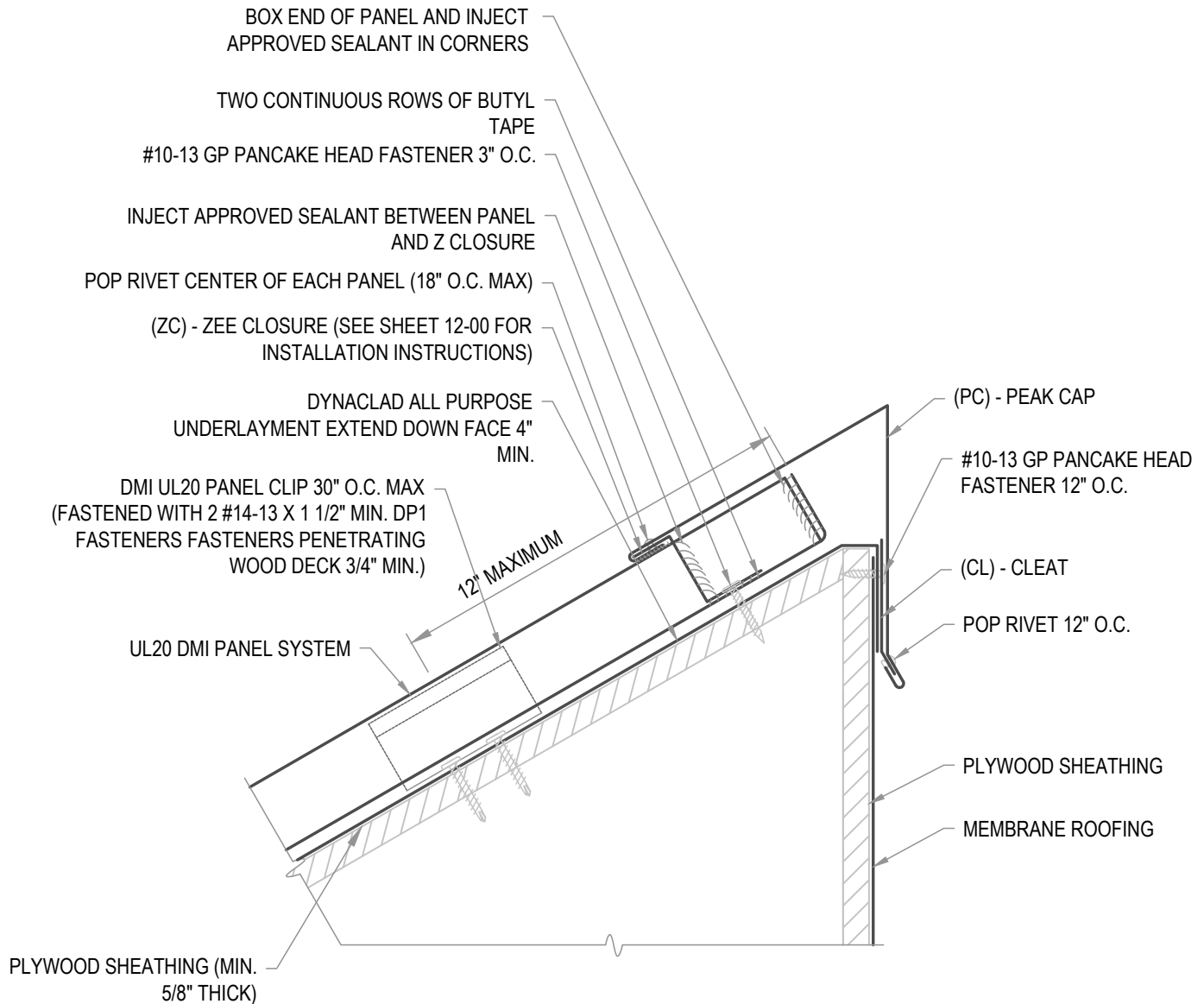
**3"=1'-0"**

#### EXPANSION NOTE

PEAK CAPS EXCEEDING 100'-0" IN LENGTH REQUIRE THE USE OF A 6" COVER PLATE.

#### FLASHING LAP NOTE

LAP PEAK AND CLEATS 2" MIN W/ 2 ROWS OF BUTYL SEALANT.  
DO NOT POP RIVET LAPPED FLASHINGS.



### ARCHITECTURAL PEAK

• **PROVEN** • **DEPENDABLE** • **SUSTAINABLE** •

**METAL ENVELOPE SYSTEMS SINCE 1988**

[WWW.DMIMETALS.COM](http://WWW.DMIMETALS.COM)

Detail:

**UL20-07-00-WA**

Issue/Rev Date:

**02/21**

Scale:

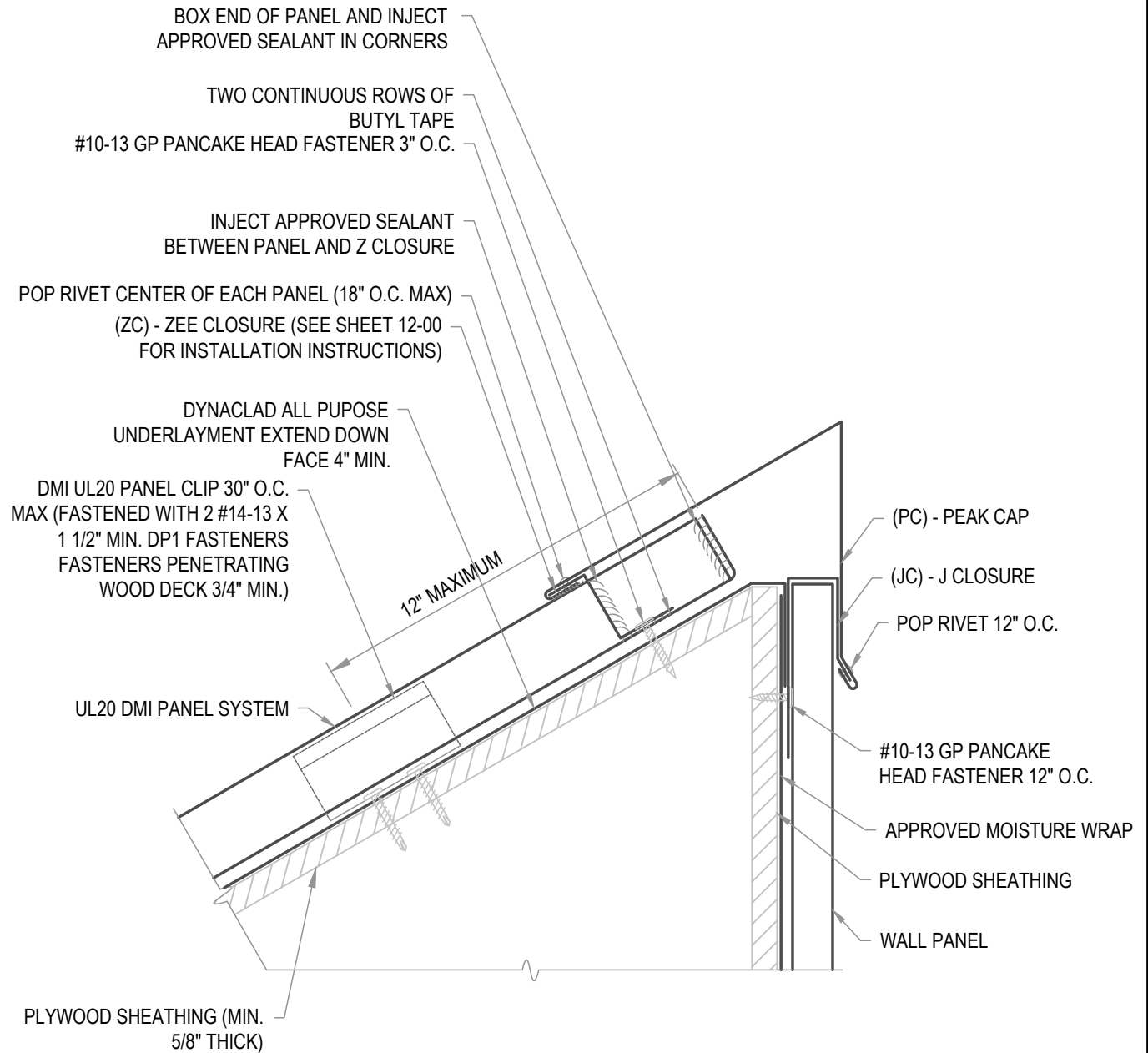
**3"=1'-0"**

#### EXPANSION NOTE

PEAK CAPS EXCEEDING 100'-0" IN LENGTH REQUIRE THE USE OF A 6" COVER PLATE.

#### FLASHING LAP NOTE

LAP PEAK AND CLEATS 2" MIN W/ 2 ROWS OF BUTYL SEALANT.  
DO NOT POP RIVET LAPPED FLASHINGS.



### ARCHITECTURAL PEAK W/ WALL PANEL

• **PROVEN** • **DEPENDABLE** • **SUSTAINABLE** •

**METAL ENVELOPE SYSTEMS SINCE 1988**

WWW.DMIMETALS.COM

Detail:

**UL20-07-01-WA**

Issue/Rev Date:

**02/21**

Scale:

**3"=1'-0"**

#### EXPANSION NOTE

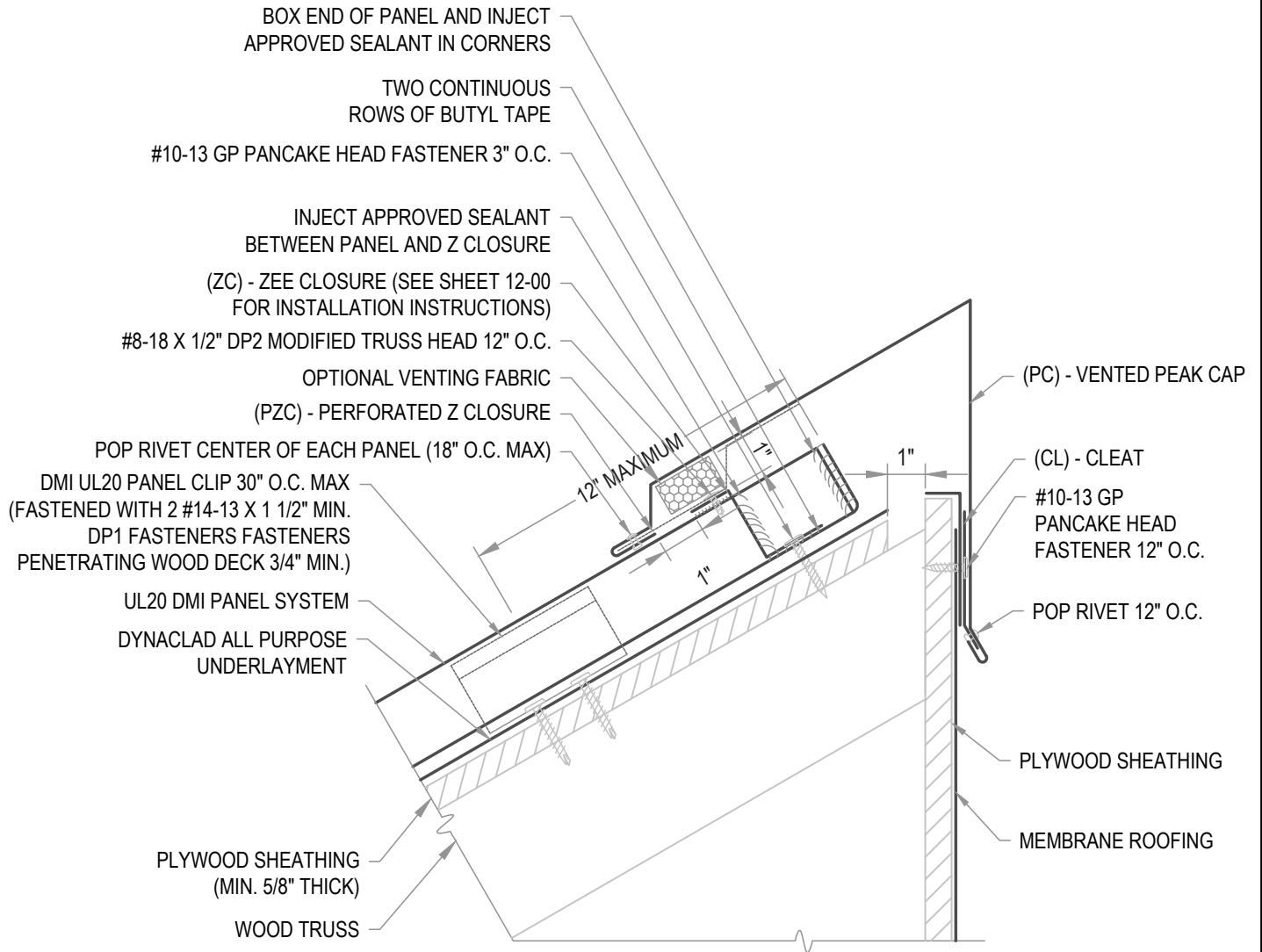
PEAK CAPS EXCEEDING 100'-0" IN LENGTH REQUIRE THE USE OF A 6" COVER PLATE.

#### FLASHING LAP NOTE

LAP PEAK AND CLEATS 2" MIN W/ 2 ROWS OF BUTYL SEALANT.  
DO NOT POP RIVET LAPPED FLASHINGS.

#### VENTILATION NOTE

DMI PERFORATED Z CLOSURE PROVIDES 23% NET FREE AIR MOVEMENT.



## ARCHITECTURAL VENTED PEAK

• **PROVEN** • **DEPENDABLE** • **SUSTAINABLE** •

**METAL ENVELOPE SYSTEMS SINCE 1988**

WWW.DMIMETALS.COM

Detail:

**UL20-07-02-WA**

Issue/Rev Date:

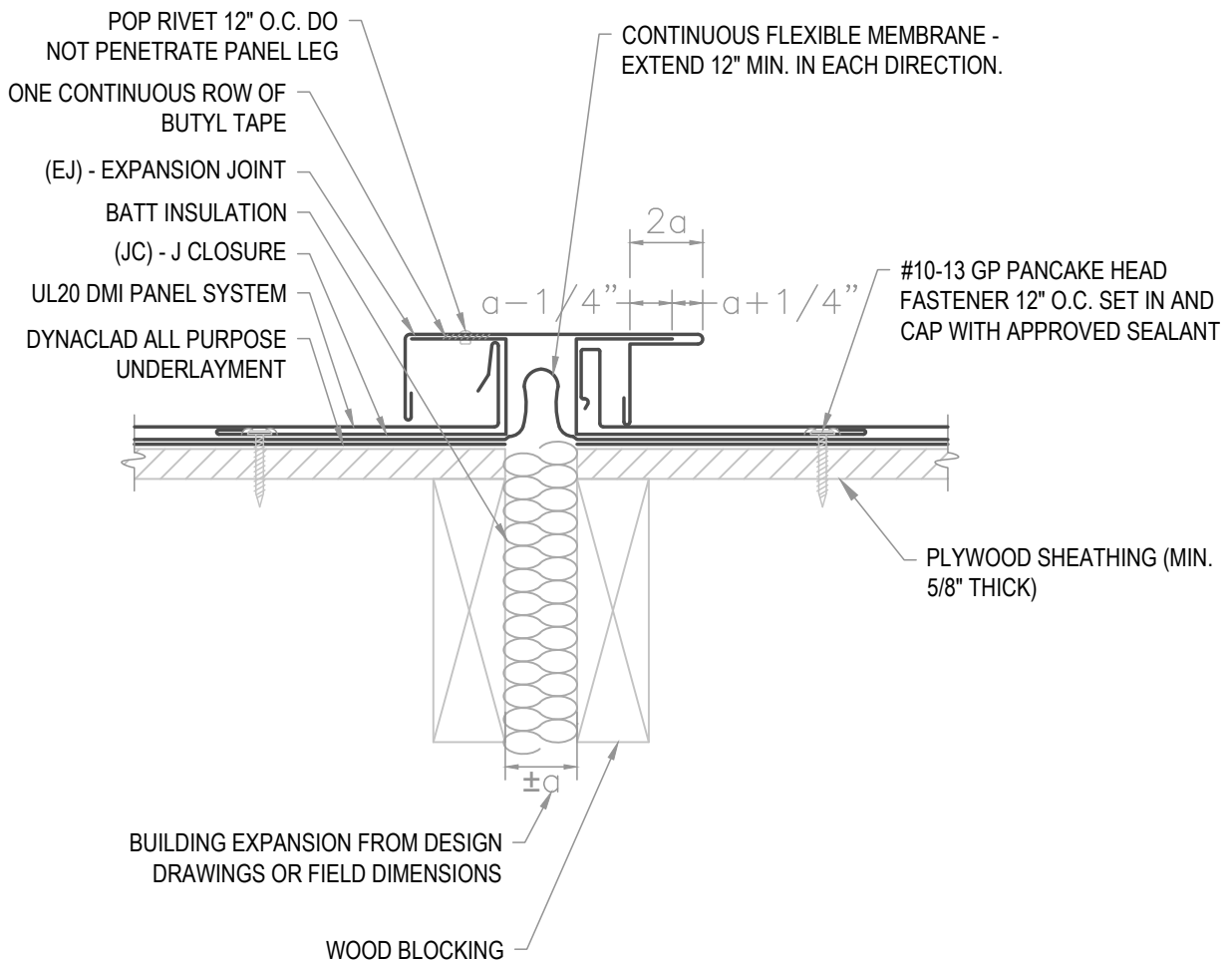
**02/21**

Scale:

**3"=1'-0"**

### FLASHING LAP NOTE

LAP EXPANSION JOINT AND (JC) - J CLOSURE 2" MINIMUM WITH 2 ROWS OF BUTYL SEALANT.



## ARCHITECTURAL EXPANSION JOINT

• **PROVEN** • **DEPENDABLE** • **SUSTAINABLE** •

**METAL ENVELOPE SYSTEMS SINCE 1988**

[WWW.DMIMETALS.COM](http://WWW.DMIMETALS.COM)

Detail:

**UL20-08-00-WA**

Issue/Rev Date:

**02/21**

Scale:

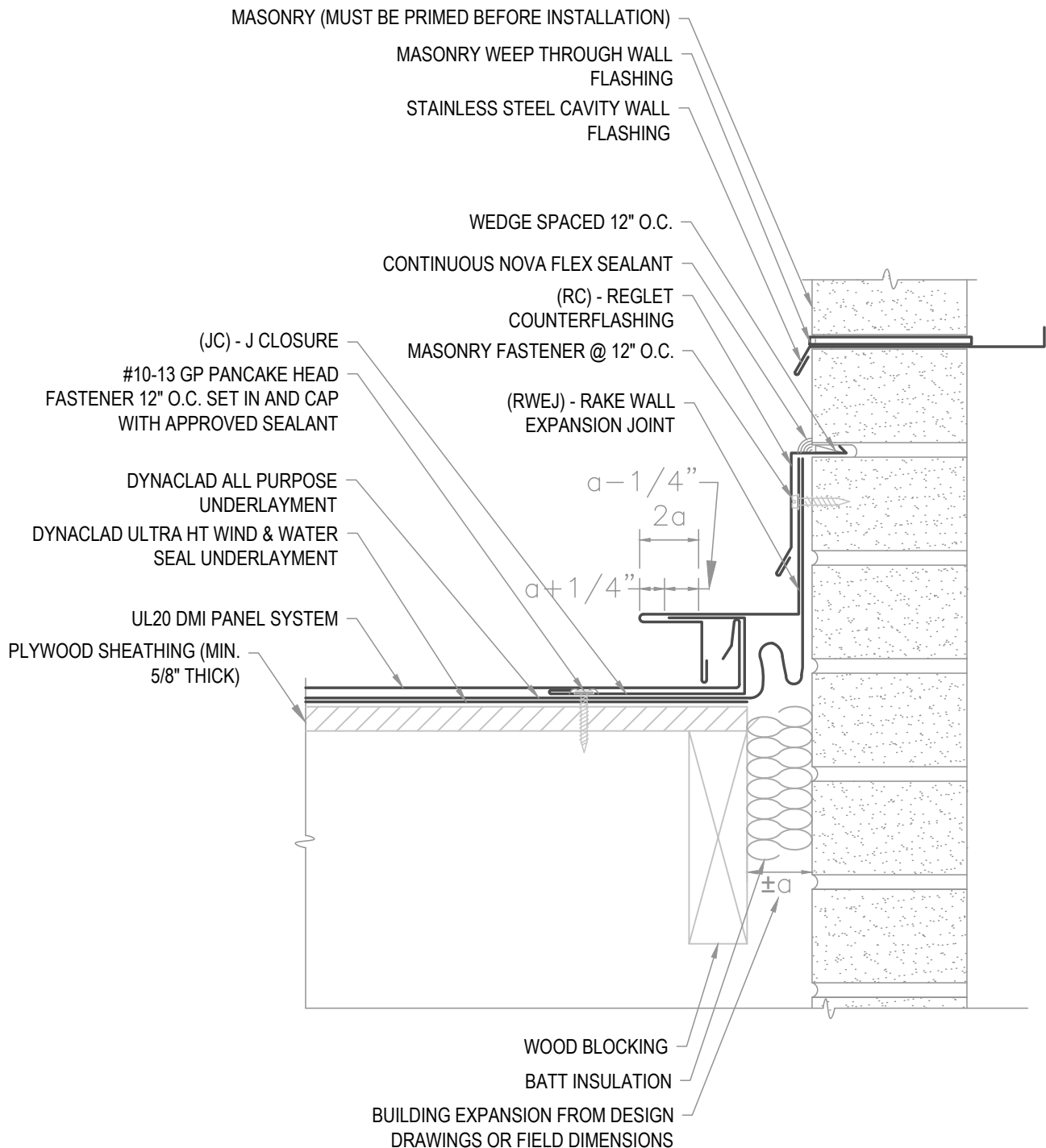
**3"=1'-0"**

## NOTE

REGLET FLASHING TO BE INSTALLED BELOW ALL WEEP HOLES.  
SURFACED MOUNT COUNTERFLASHINGS NOT ACCEPTABLE..

## FLASHING LAP NOTE

LAP RAKE WALL AND REGLET 2" MINIMUM WITH 2 ROWS OF BUTYL SEALANT.



## ARCHITECTURAL EXPANSION JOINT

• **PROVEN** • **DEPENDABLE** • **SUSTAINABLE** •

**METAL ENVELOPE SYSTEMS SINCE 1988**

[WWW.DMIMETALS.COM](http://WWW.DMIMETALS.COM)

Detail:

**UL20-08-01-WA**

Issue/Rev Date:

**02/21**

Scale:

**3"=1'-0"**



### PANEL EXPANSION NOTE

FOR STEEL PANELS < 40' WITH A 1 1/2" TURN DOWN AND 1 1/2" HEM CLEARANCE:

1. 1/4" FOR INSTALLATION TEMPERATURE BELOW 30 DEGREES FARENHEIT.
2. 1/2" FOR INSTALLATION TEMPERATURE ABOVE 30 DEGREES FARENHEIT..

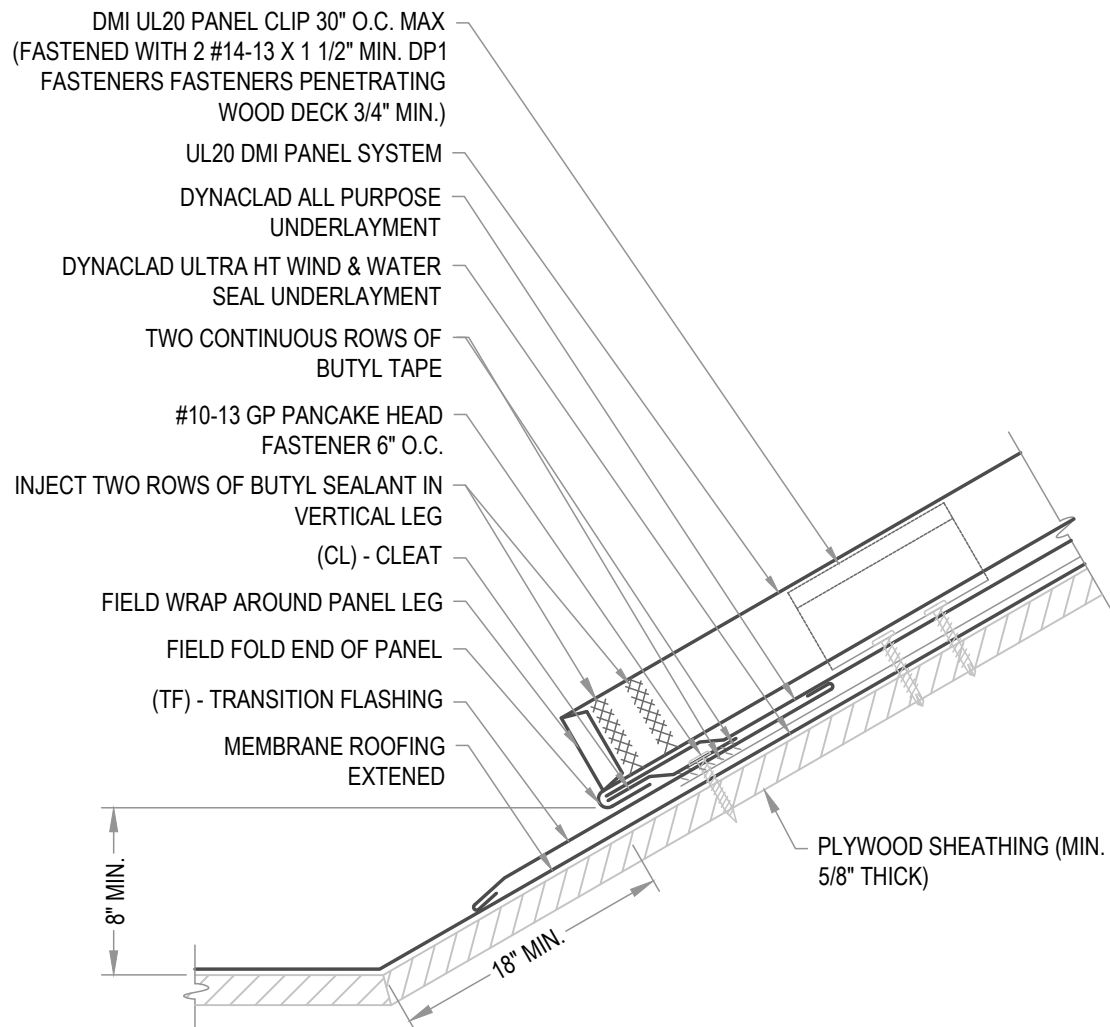
FOR STEEL PANELS > 40' WITH A 2" TURN DOWN AND 2" HEM CLEARANCE:

1. 1/4" FOR INSTALLATION TEMPERATURE BELOW 30 DEGREES FARENHEIT.
2. 1/2" FOR INSTALLATION TEMPERATURE ABOVE 30 DEGREES FARENHEIT.

FOR ALUMINUM PANELS - CONTACT DMI

### FLASHING LAP NOTE

LAP FLASHINGS 2" MIN W/ 1 ROW OF BUTYL SEALANT.



## ARCHITECTURAL TRANSITION

• **PROVEN** • **DEPENDABLE** • **SUSTAINABLE** •

**METAL ENVELOPE SYSTEMS SINCE 1988**

[WWW.DMIMETALS.COM](http://WWW.DMIMETALS.COM)

Detail:

**UL20-09-00-WA**

Issue/Rev Date:

**02/21**

Scale:

**3"=1'-0"**

#### PANEL EXPANSION NOTE

FOR STEEL PANELS < 40' WITH A 1 1/2" TURN DOWN AND 1 1/2" HEM CLEARANCE:

1. 1/4" FOR INSTALLATION TEMPERATURE BELOW 30 DEGREES FARENHEIT
2. 1/2" FOR INSTALLATION TEMPERATURE ABOVE 30 DEGREES FARENHEIT..

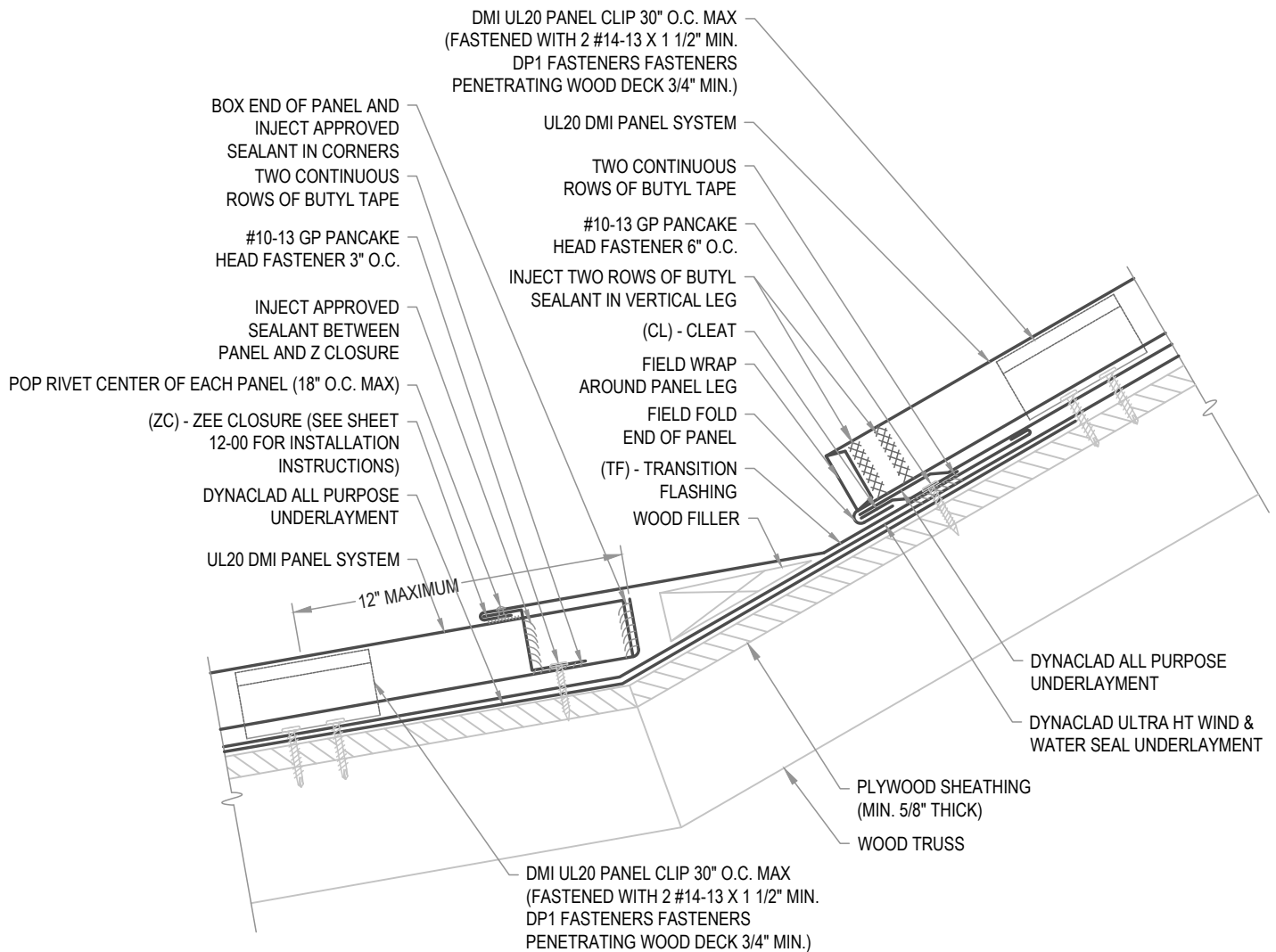
FOR STEEL PANELS > 40' WITH A 2" TURN DOWN AND 2" HEM CLEARANCE:

1. 1/4" FOR INSTALLATION TEMPERATURE BELOW 30 DEGREES FARENHEIT.
2. 1/2" FOR INSTALLATION TEMPERATURE ABOVE 30 DEGREES FARENHEIT.

FOR ALUMINUM PANELS - CONTACT DMI

#### FLASHING LAP NOTE

LAP FLASHINGS 2" MIN W/ 1 ROW OF BUTYL SEALANT.



## ARCHITECTURAL LOW TO HIGH SLOPE TRANSITION

• **PROVEN** • **DEPENDABLE** • **SUSTAINABLE** •

**METAL ENVELOPE SYSTEMS SINCE 1988**

[WWW.DMIMETALS.COM](http://WWW.DMIMETALS.COM)

Detail:

**UL20-09-01-WA**

Issue/Rev Date:

**02/21**

Scale:

**3"=1'-0"**

#### PANEL EXPANSION NOTE

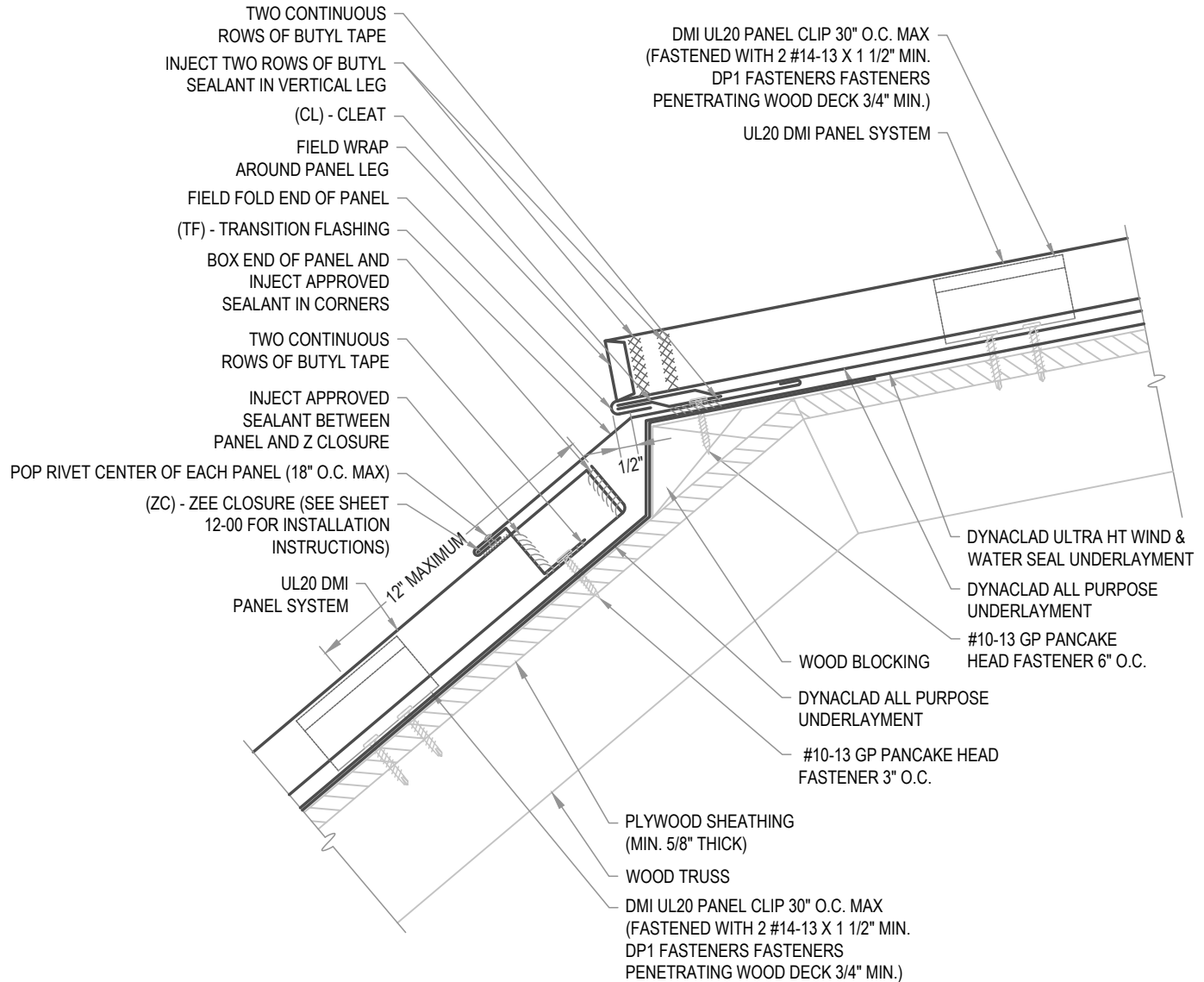
FOR STEEL PANELS < 40' WITH A 1 1/2" TURN DOWN AND 1 1/2" HEM CLEARANCE:  
1. 1/4" FOR INSTALLATION TEMPERATURE BELOW 30 DEGREES FARENHEIT  
2. 1/2" FOR INSTALLATION TEMPERATURE ABOVE 30 DEGREES FARENHEIT..

FOR STEEL PANELS > 40' WITH A 2" TURN DOWN AND 2" HEM CLEARANCE:  
1. 1/4" FOR INSTALLATION TEMPERATURE BELOW 30 DEGREES FARENHEIT.  
2. 1/2" FOR INSTALLATION TEMPERATURE ABOVE 30 DEGREES FARENHEIT.

FOR ALUMINUM PANELS - CONTACT DMI

#### FLASHING LAP NOTE

LAP FLASHINGS 2" MIN W/ 1 ROW OF BUTYL SEALANT.



## ARCHITECTURAL HIGH TO LOW SLOPE TRANSITION

• **PROVEN** • **DEPENDABLE** • **SUSTAINABLE** •

**METAL ENVELOPE SYSTEMS SINCE 1988**

[WWW.DMIMETALS.COM](http://WWW.DMIMETALS.COM)

Detail:

**UL20-09-02-WA**

Issue/Rev Date:

**02/21**

Scale:

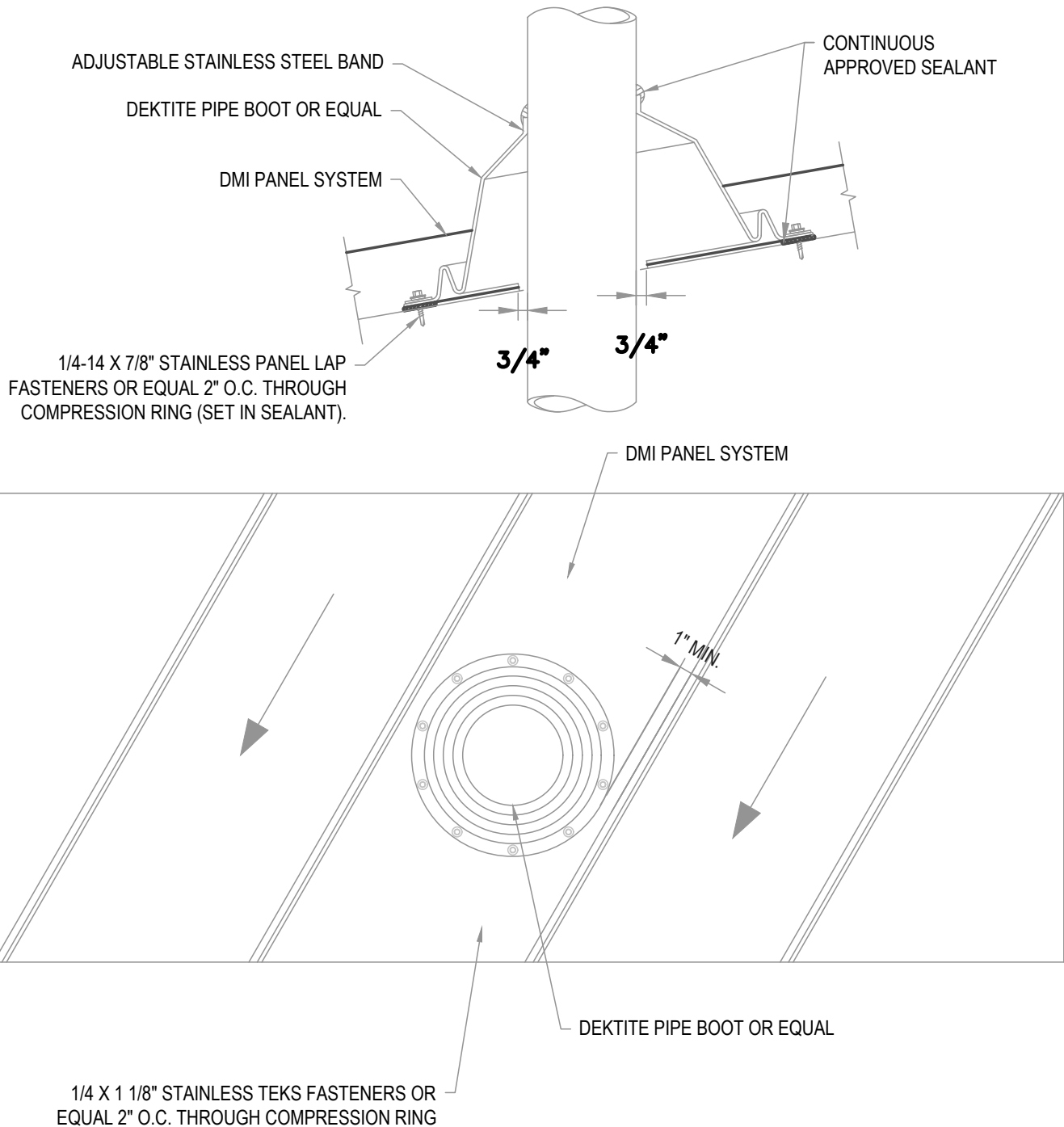
**3"=1'-0"**

# NOTE

DO NOT ATTACH INTO SOLID SUBSTRATE BELOW.

BOOT SHALL NOT INTERSECT STANDING SEAM VERTICAL LEG. INSTALL IN FLAT AREA OF PANEL ONLY.

IF USING A SQUARE BOOT DETAIL BE SURE TO SET BOOT IN A DIAGONAL OR DIAMOND TO ALLOW WATER FLOW.



## ARCHITECTURAL PIPE BOOT DETAIL

• **PROVEN** • **DEPENDABLE** • **SUSTAINABLE** •

**METAL ENVELOPE SYSTEMS SINCE 1988**

[WWW.DMIMETALS.COM](http://WWW.DMIMETALS.COM)

Detail:

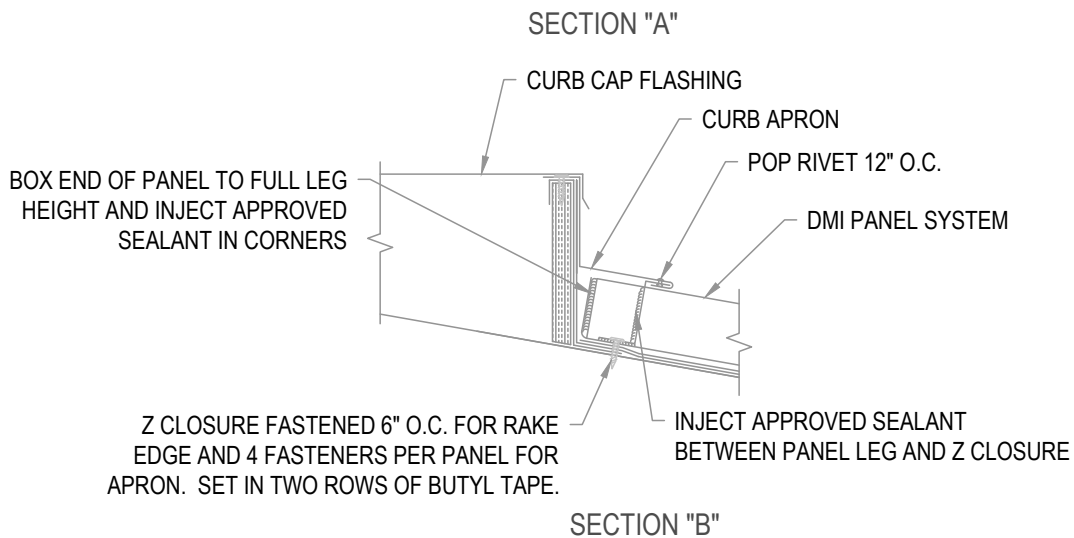
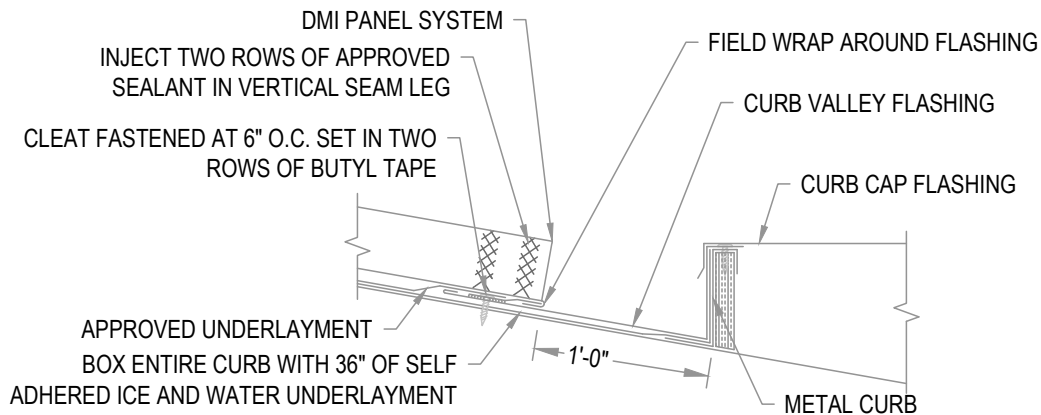
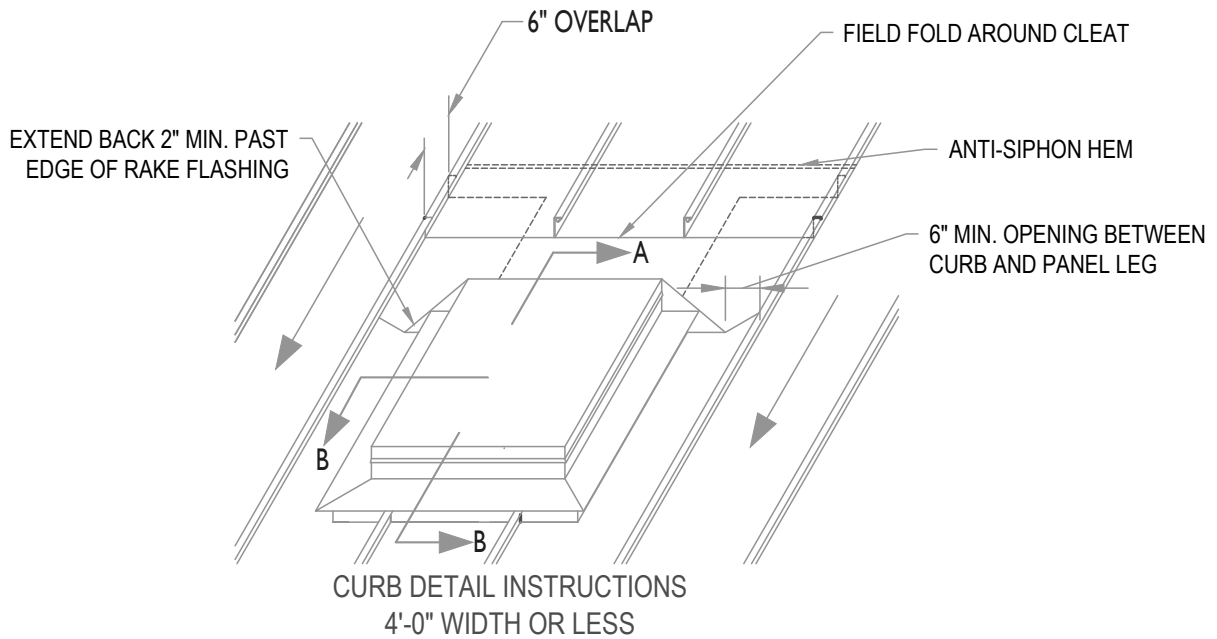
**UL20-10-00-WA**

Issue/Rev Date:

**02/21**

Scale:

**3"=1'-0"**



## ARCHITECTURAL CURB

• **PROVEN** • **DEPENDABLE** • **SUSTAINABLE** •

**METAL ENVELOPE SYSTEMS SINCE 1988**

WWW.DMIMETALS.COM

Detail:

**UL20-11-00-WA**

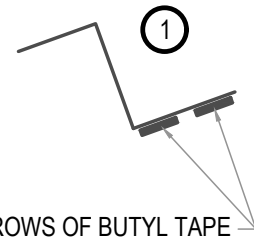
Issue/Rev Date:

**02/21**

Scale:

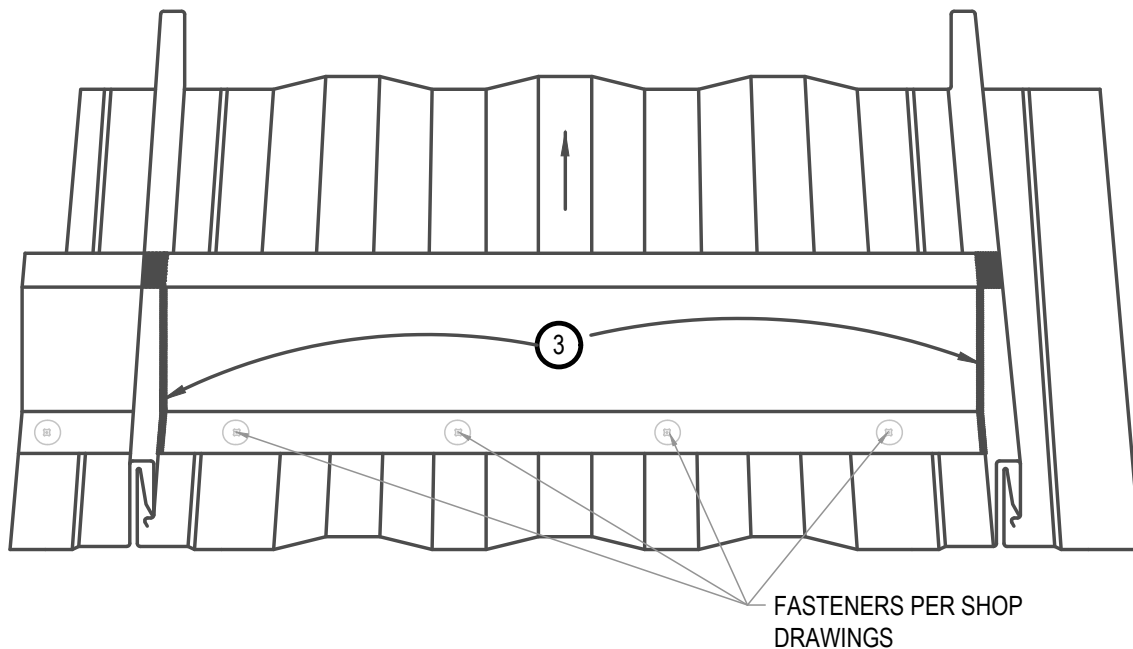
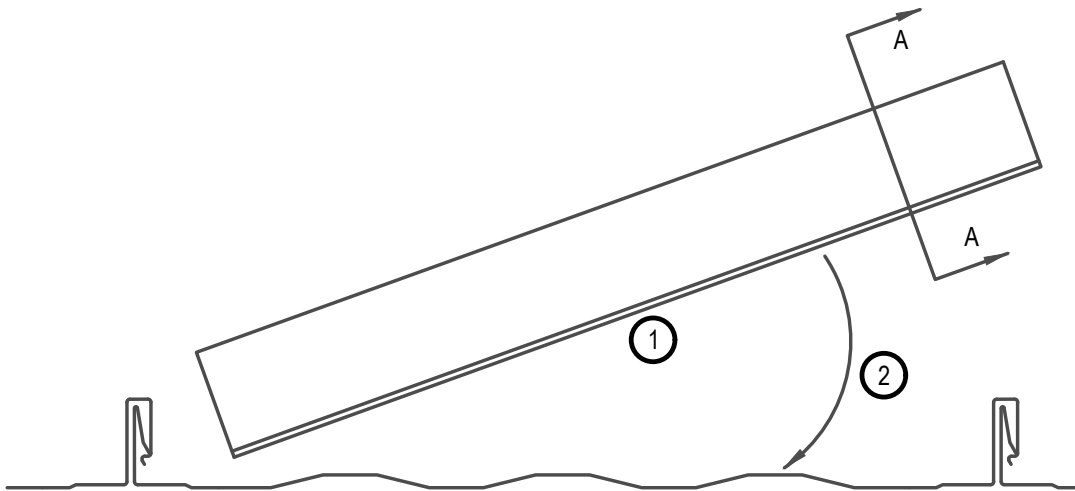
**3"=1'-0"**

- Step 1: Apply two rows of butyl tape to underside of zee.
- Step 2: Install zee closure.
- Step 3: Seal all contact points of zee and panel legs. Also seal over top of panel leg.



TWO ROWS OF BUTYL TAPE

SECTION A-A



## ARCHITECTURAL Z INSTALLATION GUIDE

• **PROVEN** • **DEPENDABLE** • **SUSTAINABLE** •

**METAL ENVELOPE SYSTEMS SINCE 1988**

[WWW.DMIMETALS.COM](http://WWW.DMIMETALS.COM)

Detail:

**UL20-12-00-WA**

Issue/Rev Date:

**02/21**

Scale:

**3"=1'-0"**