

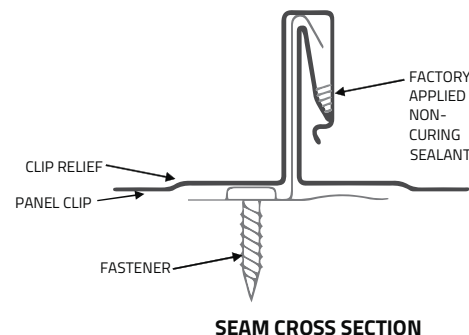
ULTRA-LOCK UL20 is an architectural panel that is snapped together during installation. The panel is an engineered integral interlocking system by design that installs in one direction from a given starting point. Ultra-Lock is a very flexible panel design that works well with a wide range of building designs.

Uses & Applications

Product uses include roofs with slopes as low as 3:12, vertical fascia, equipment screens, mansards, and wall panels.

Advantages

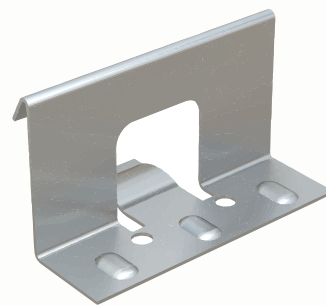
- Optional Factory Applied Non-Curing Sealant - for superior watertightness
- Engineered Snap-Together Design for easy installation
- Symmetrical Visual Aesthetics - providing a non-directional appearance
- Clip allows for unlimited thermal expansion and contraction
- Continuous Interlocking Seam: no seam disengagement
- Continuous Roll formed Lengths: eliminates need for panel lap joints.
- Total System Warranties Available - for total confidence



Performance Tested

- UL-1897 Uplift Resistance
- UL-580 Wind Uplift
- UL-263 Fire Resistance
- UL-790 Fire Rating
- ASTM E283 Air Infiltration
- ASTM E331 Water Penetration

Please consult DMI for applicability of test reports for your project.



UL20 PANEL CLIP

18 ga. galv. or stainless steel

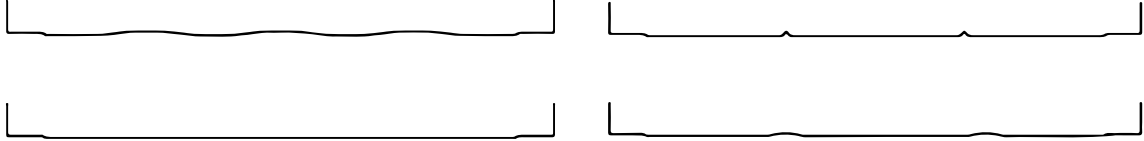
800.828.1510 ■ www.dmimetals.com ■ sales@dmimetals.com

PROVEN. DEPENDABLE. SUSTAINABLE.

METAL ENVELOPE SYSTEMS SINCE 1988

Project Name: _____
 Architect: _____
 Installing Contractor: _____
 General Contractor: _____
 Specification Section: _____

Stiffener



DynaClad® PVDF Color Chart

PUTTY SRI = 77	SANDSTONE SRI = 77	DOVE GREY SRI = 61	PATINA COPPER SRI = 58	WHITE SRI = 85	COBALT BLUE SRI = 20
BEIGE SRI = 53	STONE SRI = 49	SLATE GREY SRI = 47	TERRA COTTA SRI = 43	METALLIC SILVER SRI = 53	BRITE RED* SRI = 44
					Metallic Colors † Premium Colors **
MUSKET GREY SRI = 35	SEAPORT SRI = 35	COLONIAL RED SRI = 34	SLATE BLUE SRI = 34	CHAMPAGNE SRI = 51	
BURGUNDY SRI = 34	HEMLOCK GREEN SRI = 31	LEAF GREEN SRI = 31	CHARCOAL GREY SRI = 31	METALLIC COPPER SRI = 49	
SPARTAN BRONZE SRI = 30	CLASSIC BRONZE SRI = 29	MATTE BLACK SRI = 29	EVERGREEN SRI = 28	AGED COPPER SRI = 43	
DARK BRONZE SRI = 27	ROYAL BLUE SRI = 27	HARTFORD GREEN SRI = 26	BROWN SRI = 25	WEATHERED ZINC SRI = 37	

Custom Colors Available

Colors shown are samples and may vary slightly from actual material.

Please consult DMI Color Chart for stocking color availability.

†Metallic colors are directionally sensitive and therefore entire roof areas should be ordered at once time to ensure uniformity.

*Brite Red has a clear coat. **Premium colors carry an upcharge.

Panel Width

12"
 16"
 18" (17.625")

Clip

Expansion

Substrate

24 ga. Galvalume®
 22 ga. Galvalume®
 .032 Aluminum
 .040 Aluminum

Embossed: _____

Consult DMI for minimum quantities, upcharges, set up fees and extended lead times

Standard Finishes

DynaClad® PVDF: _____
 Acrylic Coated Galvalume (Acrylume®)
 Clear Anodized Aluminum

Premium Finishes*

DynaClad® Metallic PVDF: _____
 DynaClad® Brite Red PVDF
 DynaClad® Cobalt Blue PVDF
 DynaClad® Standard Color PVDF w/ Clearcoat: _____
 DynaClad® Metallic Color PVDF w/ Clearcoat: _____
 Custom Color: _____

*Premium Colors subject to minimum quantities, extended lead times and upcharges.
 Consult DMI for details.

Warranty

Finish

DynaClad® Paint Finish
 Galvalume® 20 Year - 6 Month (Substrate)
 Aluminum Sheet 2 Year (Substrate)

Watertight

DynaClad® Metal Roofing System: _____
 DynaClad® Metal Roofing System ND: _____

Since 1988 Dimensional Metals, Inc. (DMI) has specialized in the manufacturing of architectural metal roof and wall panel systems as well as fabricated architectural sheet metal for the construction industry. We are backed by decades of proven metal envelope design, dependable Technical Field Services, and an Engineering Department delivering sustainable solutions. You are sure to find the product that will best enhance your design.

800.828.1510 ■ www.dmimetals.com ■ sales@dmimetals.com

PROVEN. DEPENDABLE. SUSTAINABLE.

METAL ENVELOPE SYSTEMS SINCE 1988