

**NOTE**

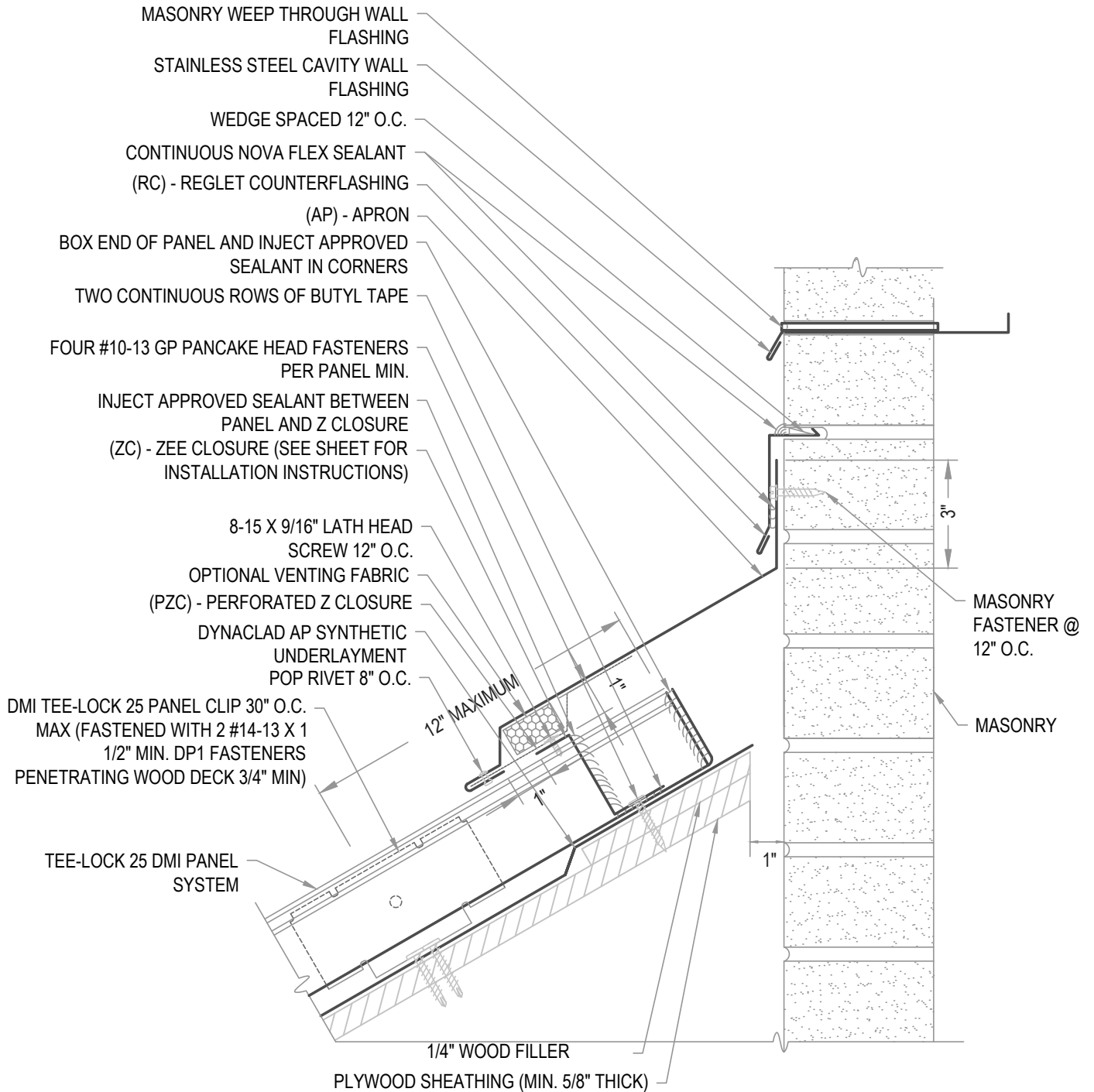
REGLET FLASHING TO BE INSTALLED BELOW ALL WEEP HOLES.  
SURFACED MOUNT COUNTERFLASHINGS NOT ACCEPTABLE.

**FLASHING LAP NOTE**

LAP APRON AND RAT GUARD (SLOPED) 2" MIN WI 2 ROWS OF BUTYL SEALANT.  
DO NOT POP RIVET LAPPED FLASHINGS.

**VENTILATION NOTE**

DMI PERFORATED Z CLOSURE PROVIDES 23% NET FREE AIR MOVEMENT.



**ARCHITECTURAL VENTED APRON**

**• PROVEN • DEPENDABLE • SUSTAINABLE •**  
**METAL ENVELOPE SYSTEMS SINCE 1988**

[WWW.DMIMETALS.COM](http://WWW.DMIMETALS.COM)

Detail:

**TL25 06-03-W**

Issue/Rev Date:

**01/17**

Scale:

**3"=1'-0"**