

GUTTER LAP NOTE

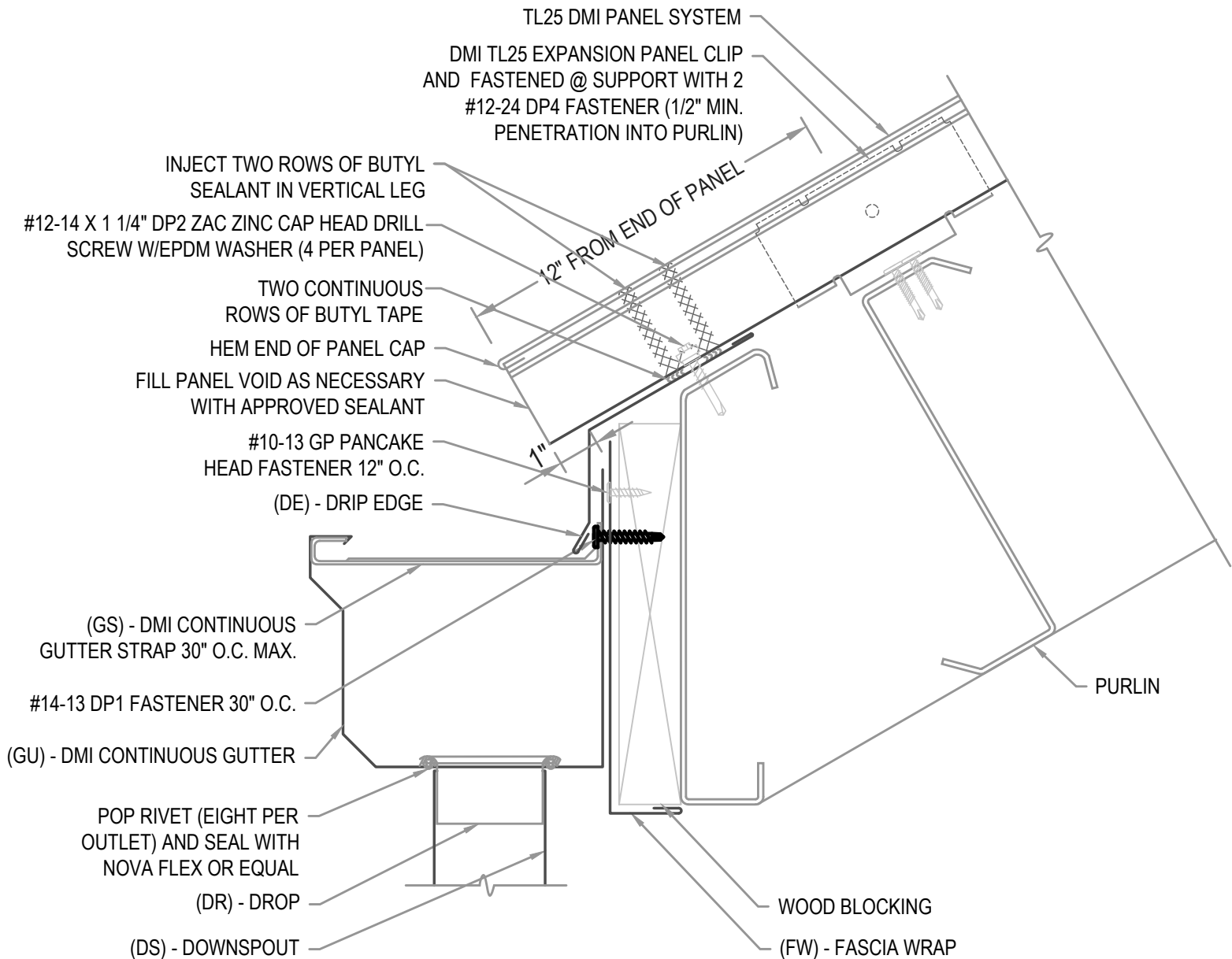
LAP GUTTER 3" MIN W/ 2 ROWS OF APPROVED SEALANT AND POP RIVET JOINT 2" O.C. SET IN AND CAP POP RIVETS IN APPROVED SEALANT.

FLASHING LAP NOTE

LAP FLASHINGS 2" MIN W/ 1 ROW OF BUTYL SEALANT.

FASTENER NOTE

ALL EXTERIOR FASTENERS ARE TO BE EITHER STAINLESS OR PLATED CARBON STEEL.



HYDROSTATIC EAVE W/ GUTTER

• **PROVEN** • **DEPENDABLE** • **SUSTAINABLE** •
METAL ENVELOPE SYSTEMS SINCE 1988

WWW.DMIMETALS.COM

Detail:

TL25 01-00-PH

Issue/Rev Date:

09/18

Scale:

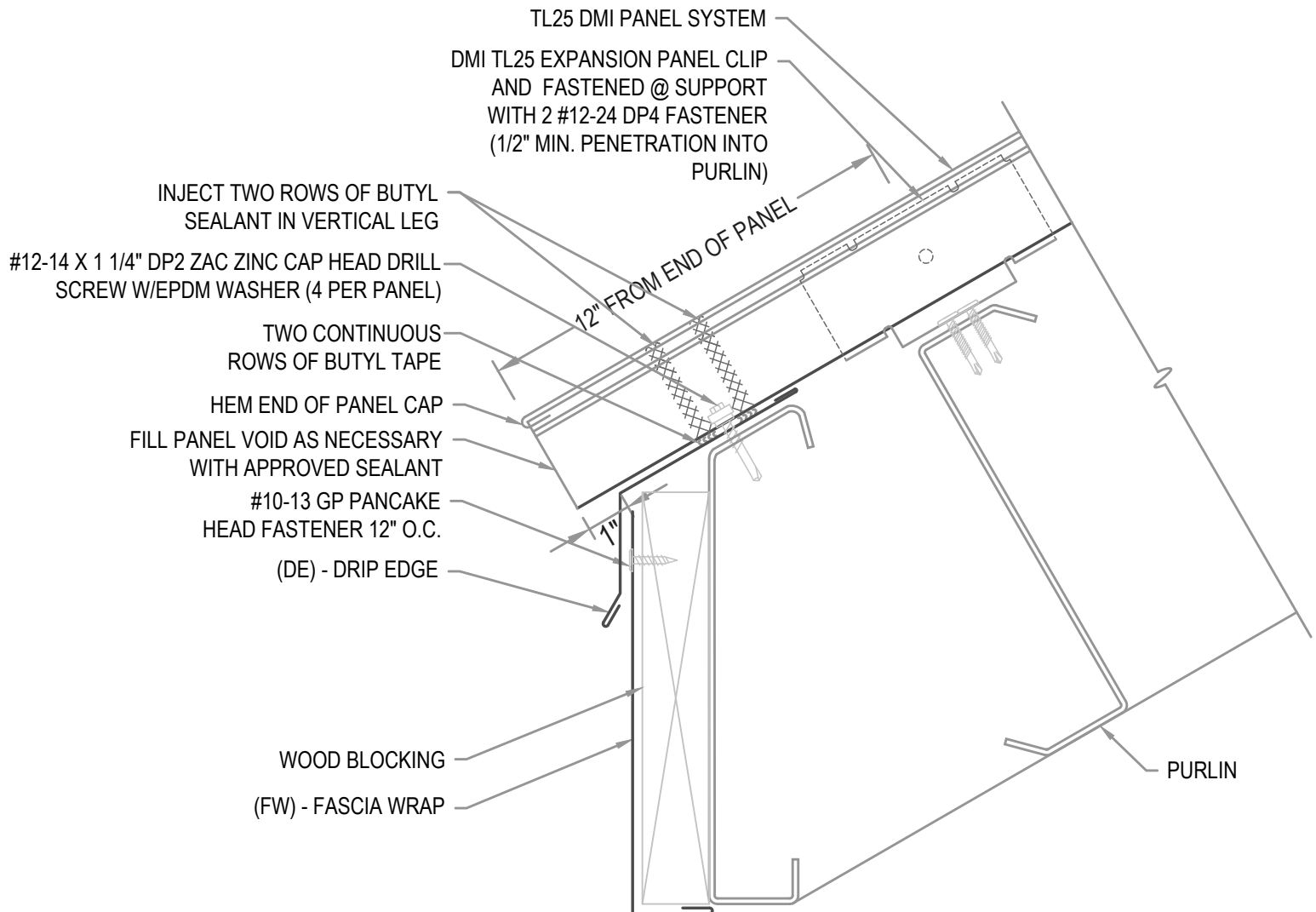
3"=1'-0"

FLASHING LAP NOTE

LAP FLASHINGS 2" MIN W/ 1 ROW OF BUTYL SEALANT.

FASTENER NOTE

ALL EXTERIOR FASTENERS ARE TO BE EITHER STAINLESS OR PLATED CARBON STEEL.



HYDROSTATIC EAVE W/ FASCIA WRAP

• **PROVEN** • **DEPENDABLE** • **SUSTAINABLE** •

METAL ENVELOPE SYSTEMS SINCE 1988

WWW.DMIMETALS.COM

Detail:

TL25 01-01-PH

Issue/Rev Date:

09/18

Scale:

3"=1'-0"

GUTTER LAP NOTE

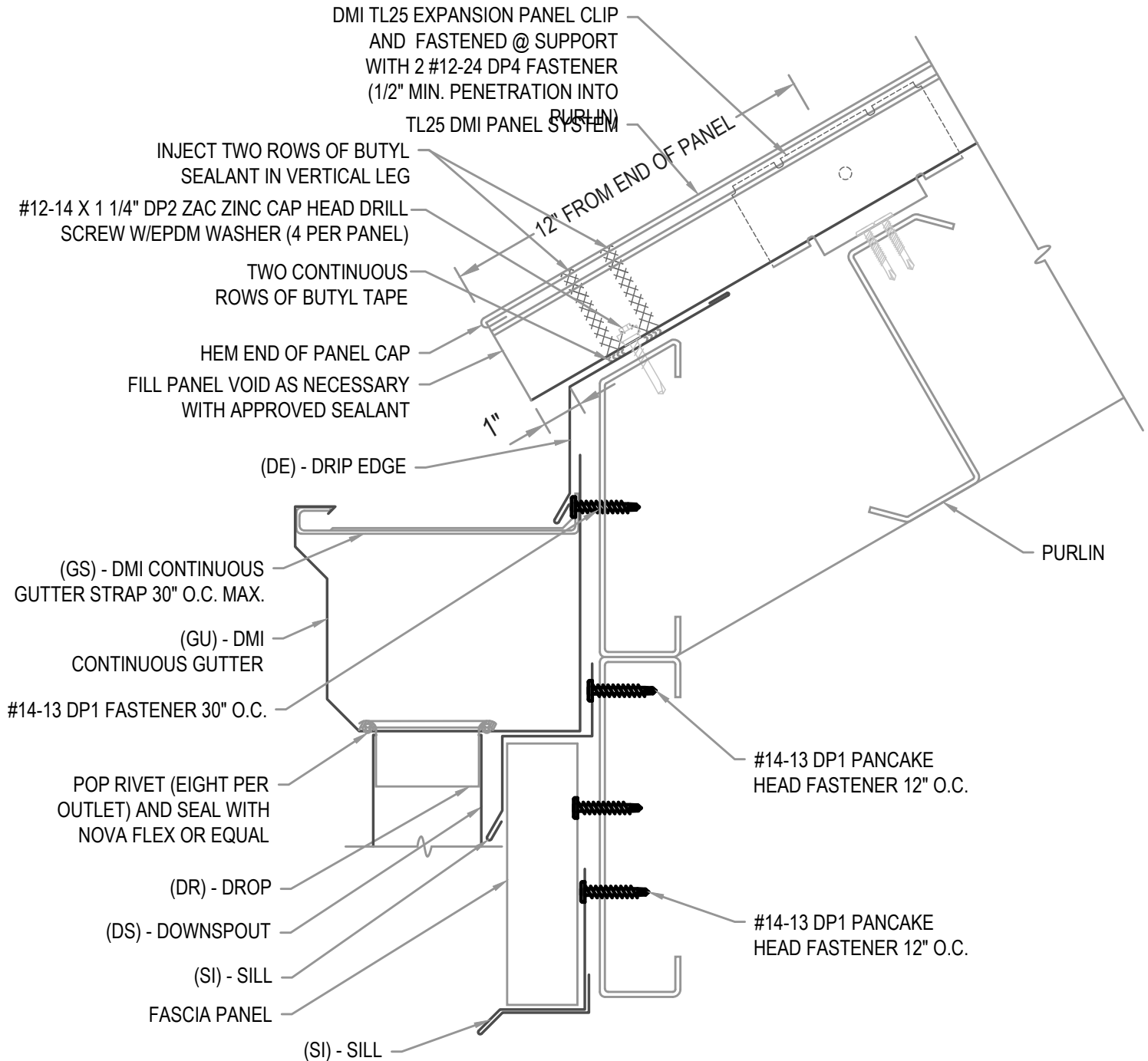
LAP GUTTER 3" MIN W/ 2 ROWS OF APPROVED SEALANT AND POP RIVET JOINT 2" O.C. SET IN AND CAP POP RIVETS IN APPROVED SEALANT.

FLASHING LAP NOTE

LAP FLASHINGS 2" MIN W/ 1 ROW OF BUTYL SEALANT.

FASTENER NOTE

ALL EXTERIOR FASTENERS ARE TO BE EITHER STAINLESS OR PLATED CARBON STEEL.



HYDROSTATIC EAVE W/ GUTTER

• **PROVEN** • **DEPENDABLE** • **SUSTAINABLE** •

METAL ENVELOPE SYSTEMS SINCE 1988

WWW.DMIMETALS.COM

Detail:

TL25 01-02-PH

Issue/Rev Date:

09/18

Scale:

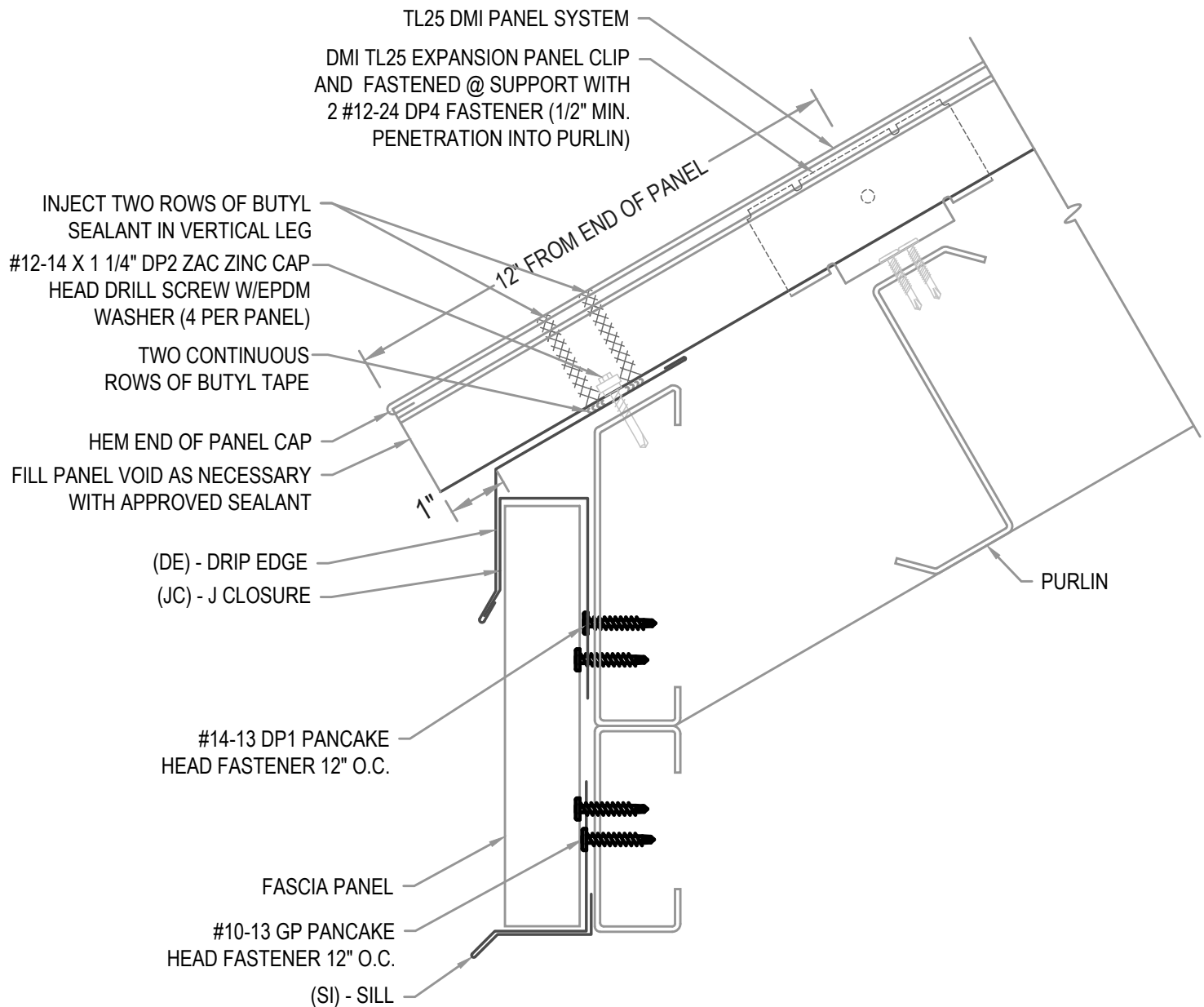
3"=1'-0"

FLASHING LAP NOTE

LAP FLASHINGS 2" MIN W/ 1 ROW OF BUTYL SEALANT.

FASTENER NOTE

ALL EXTERIOR FASTENERS ARE TO BE EITHER STAINLESS OR PLATED CARBON STEEL.



HYDROSTATIC EAVE W/ FASCIA PANEL

• **PROVEN** • **DEPENDABLE** • **SUSTAINABLE** •
METAL ENVELOPE SYSTEMS SINCE 1988

WWW.DMIMETALS.COM

Detail:

TL25 01-03-PH

Issue/Rev Date:

09/18

Scale:

3"=1'-0"

EXPANSION NOTE

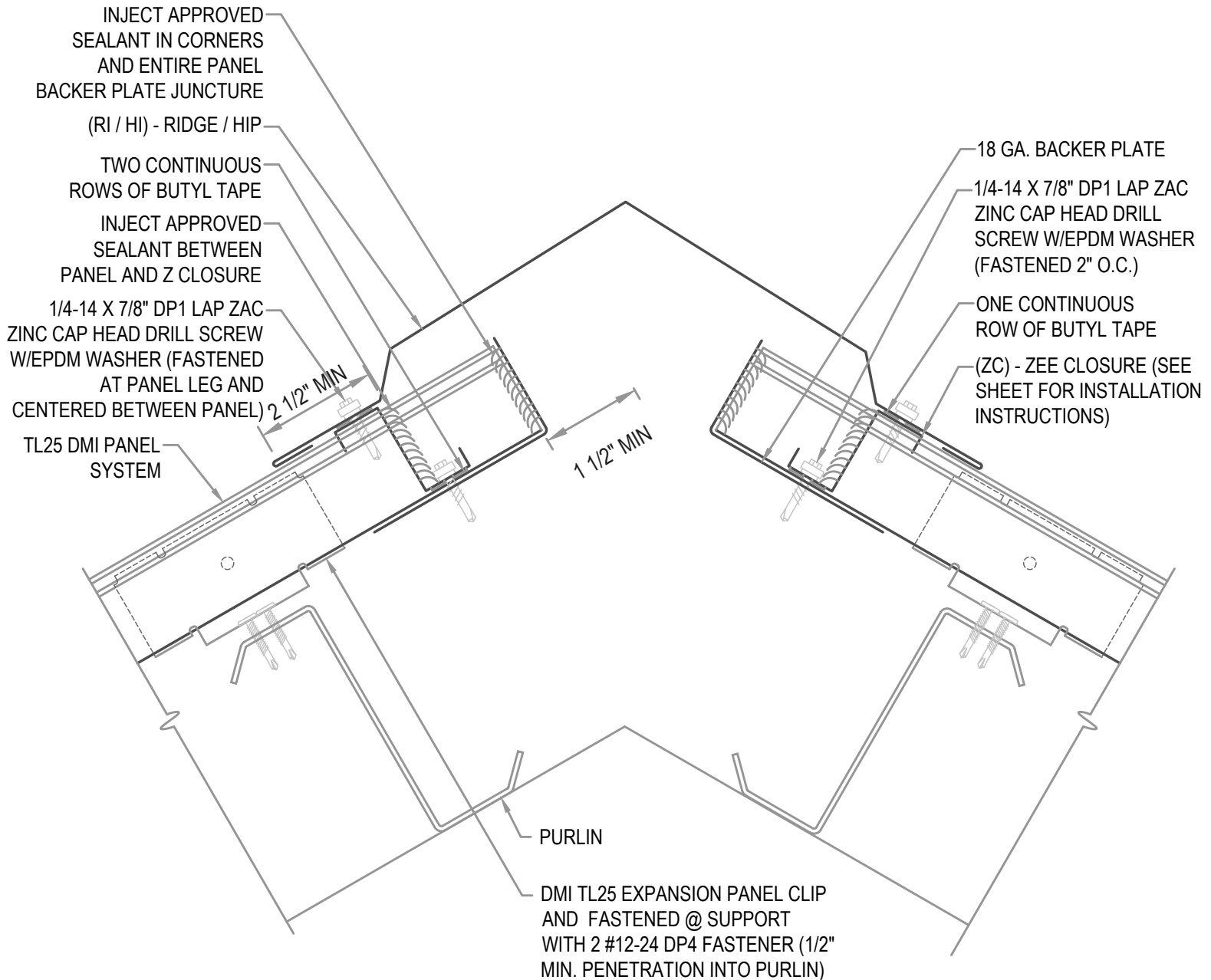
RIDGES EXCEEDING 100'-0" IN LENGTH REQUIRE THE USE OF A 6" COVER PLATE.

FLASHING LAP NOTE

LAP RIDGE/HIP 4" MIN W/ 2 ROWS OF BUTYL SEALANT.
DO NOT POP RIVET LAPPED FLASHINGS.

FASTENER NOTE

ALL EXTERIOR FASTENERS ARE TO BE EITHER STAINLESS OR PLATED CARBON STEEL.



HYDROSTATIC RIDGE / HIP

• **PROVEN** • **DEPENDABLE** • **SUSTAINABLE** •
METAL ENVELOPE SYSTEMS SINCE 1988

WWW.DMIMETALS.COM

Detail:

TL25 02-00-PH

Issue/Rev Date:

09/18

Scale:

3"=1'-0"

EXPANSION NOTE

RIDGES EXCEEDING 100'-0" IN LENGTH REQUIRE THE USE OF A 6" COVER PLATE.

FLASHING LAP NOTE

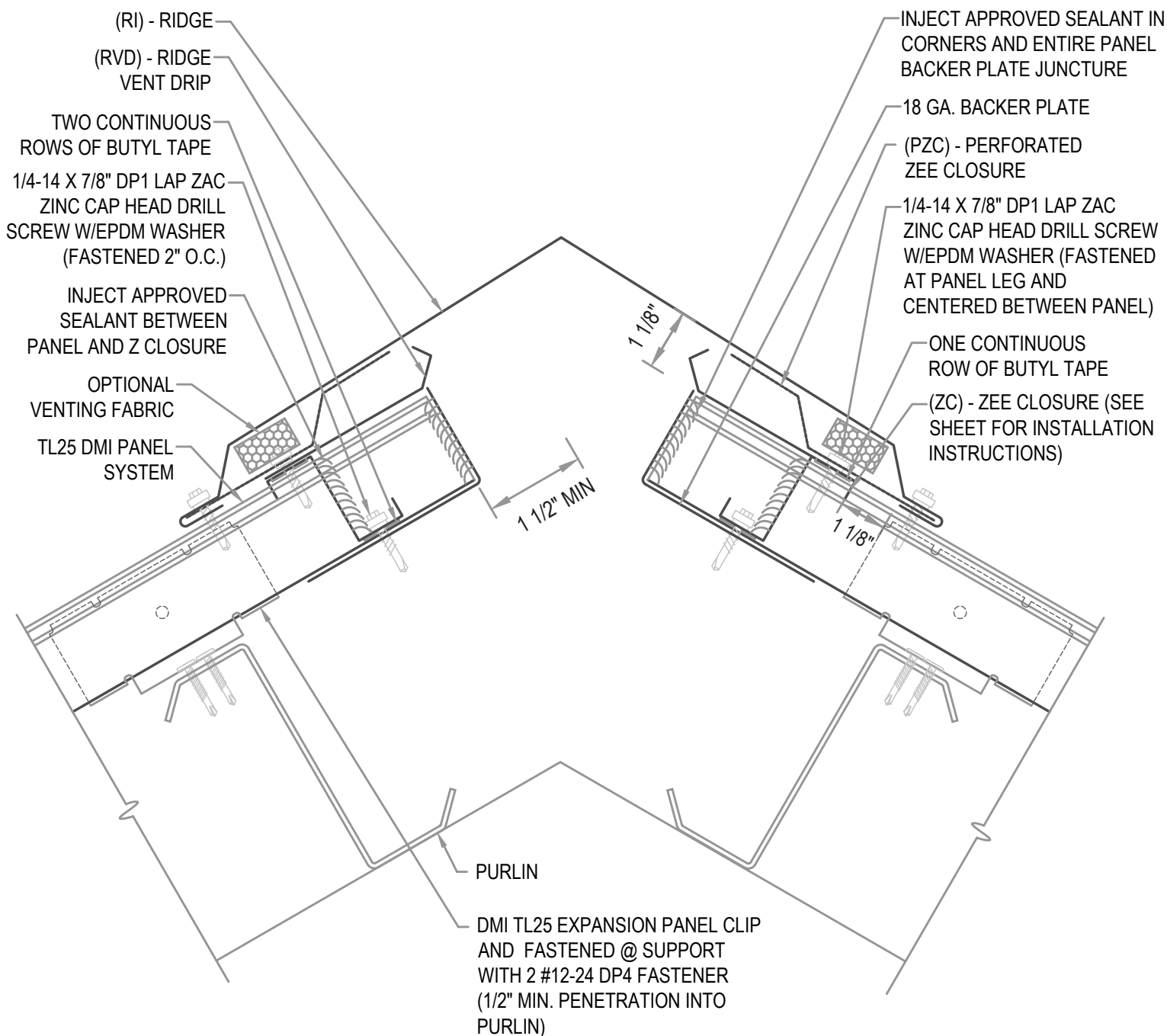
LAP RIDGE/HIP 4" MIN W/ 2 ROWS OF BUTYL SEALANT.
DO NOT POP RIVET LAPPED FLASHINGS.

FASTENER NOTE

ALL EXTERIOR FASTENERS ARE TO BE EITHER STAINLESS OR PLATED CARBON STEEL.

VENTILATION NOTE

DMI PERFORATED Z CLOSURE PROVIDES 23% NET FREE AIR MOVEMENT.
HIP CONDITIONS CAN NOT BE VENTED.



HYDROSTATIC VENTED RIDGE

• **PROVEN** • **DEPENDABLE** • **SUSTAINABLE** •

METAL ENVELOPE SYSTEMS SINCE 1988

WWW.DMIMETALS.COM

Detail:

TL25 02-01-PH

Issue/Rev Date:

09/18

Scale:

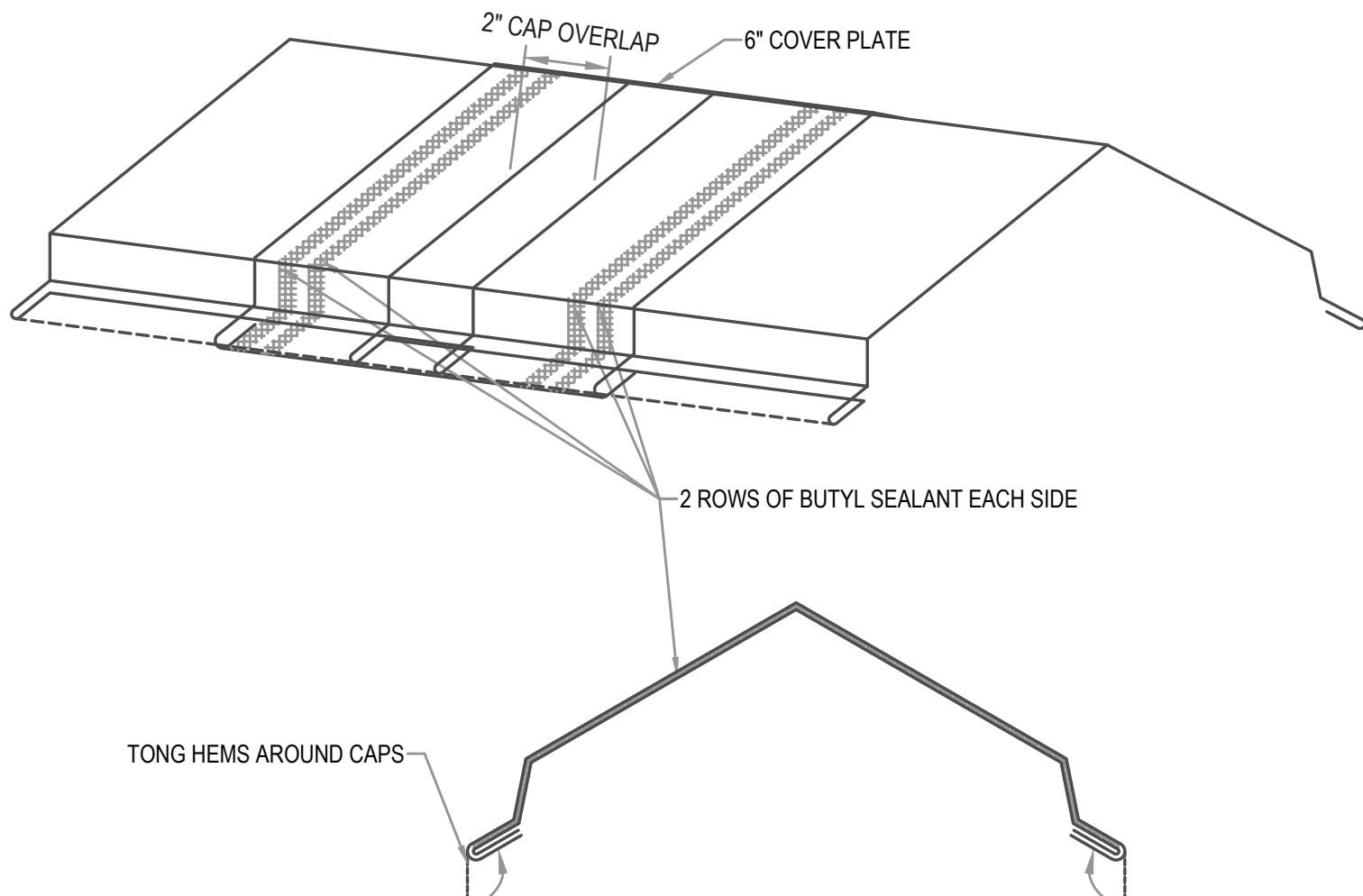
3"=1'-0"

EXPANSION NOTE

RIDGES EXCEEDING 100'-0" IN LENGTH REQUIRE THE USE OF A 6" COVER PLATE.

FLASHING LAP NOTE

LAP RIDGE/HIP 4" MIN W/ 2 ROWS OF BUTYL SEALANT.
DO NOT POP RIVET LAPPED FLASHINGS.



HYDROSTATIC RIDGE COVER PLATE

• PROVEN • DEPENDABLE • SUSTAINABLE •

METAL ENVELOPE SYSTEMS SINCE 1988

WWW.DMIMETALS.COM

Detail:

TL25 02-02-PH

Issue/Rev Date:

09/18

Scale:

3"=1'-0"

INVERTED V NOTE

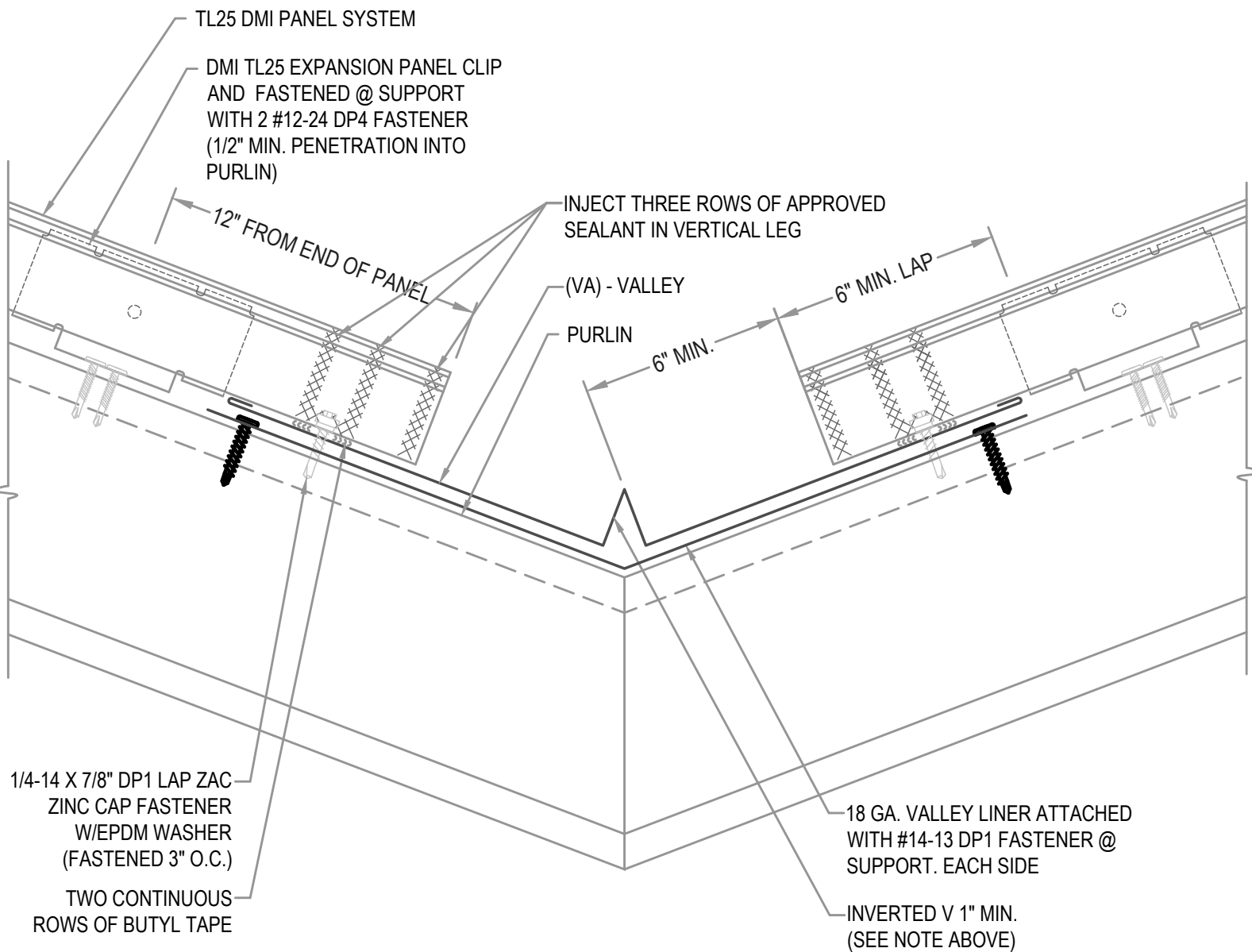
ON ROOF PITCHES OVER 6:12 OR PANEL LENGTHS EXCEEDING 60' OR ON DISSIMILAR PITCHES INCREASE THE INVERTED V IN THE VALLEY TO 2".

FLASHING LAP NOTE

LAP VALLEY 8" MIN. WITH 2 ROWS OF APPROVED SEALANT.

FASTENER NOTE

ALL EXTERIOR FASTENERS ARE TO BE EITHER STAINLESS OR PLATED CARBON STEEL.



HYDROSTATIC VALLEY

• **PROVEN** • **DEPENDABLE** • **SUSTAINABLE** •

METAL ENVELOPE SYSTEMS SINCE 1988

WWW.DMIMETALS.COM

Detail:

TL25 03-00-PH

Issue/Rev Date:

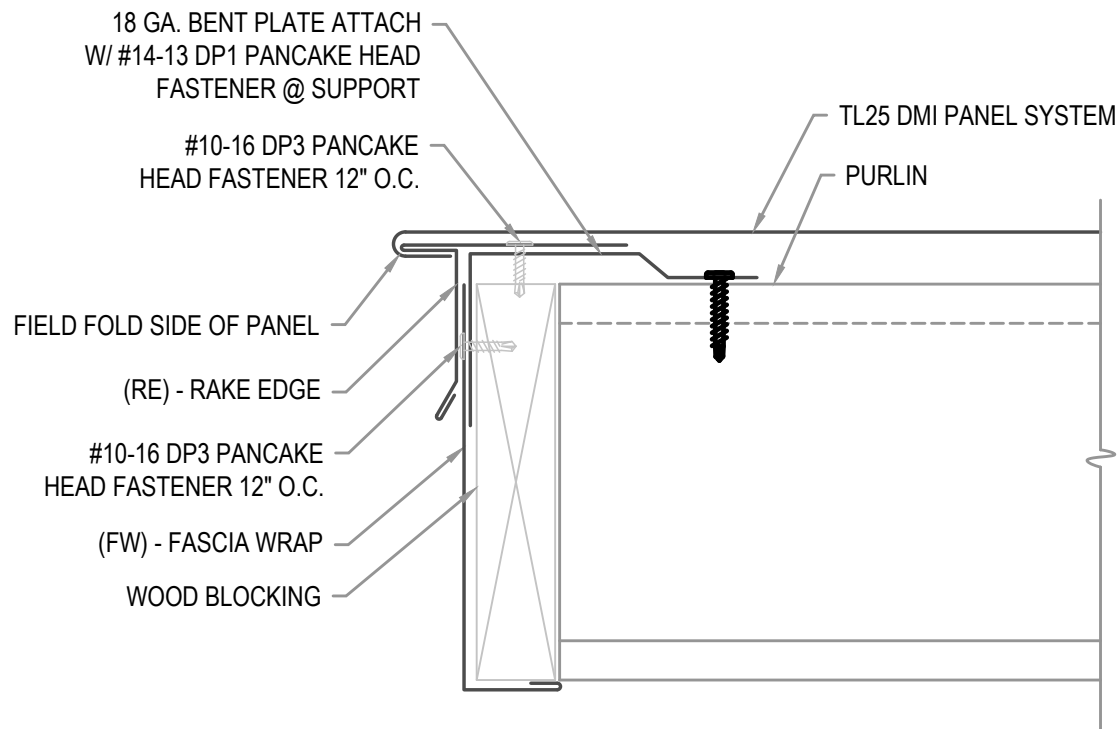
09/18

Scale:

3"=1'-0"

FLASHING LAP NOTE

LAP RAKE EDGE AND FASCIA 2" MINIMUM WITH 1 ROW OF BUTYL SEALANT.



HYDROSTATIC RAKE EDGE

• **PROVEN** • **DEPENDABLE** • **SUSTAINABLE** •
METAL ENVELOPE SYSTEMS SINCE 1988

WWW.DMIMETALS.COM

Detail:

TL25 04-00-PH

Issue/Rev Date:

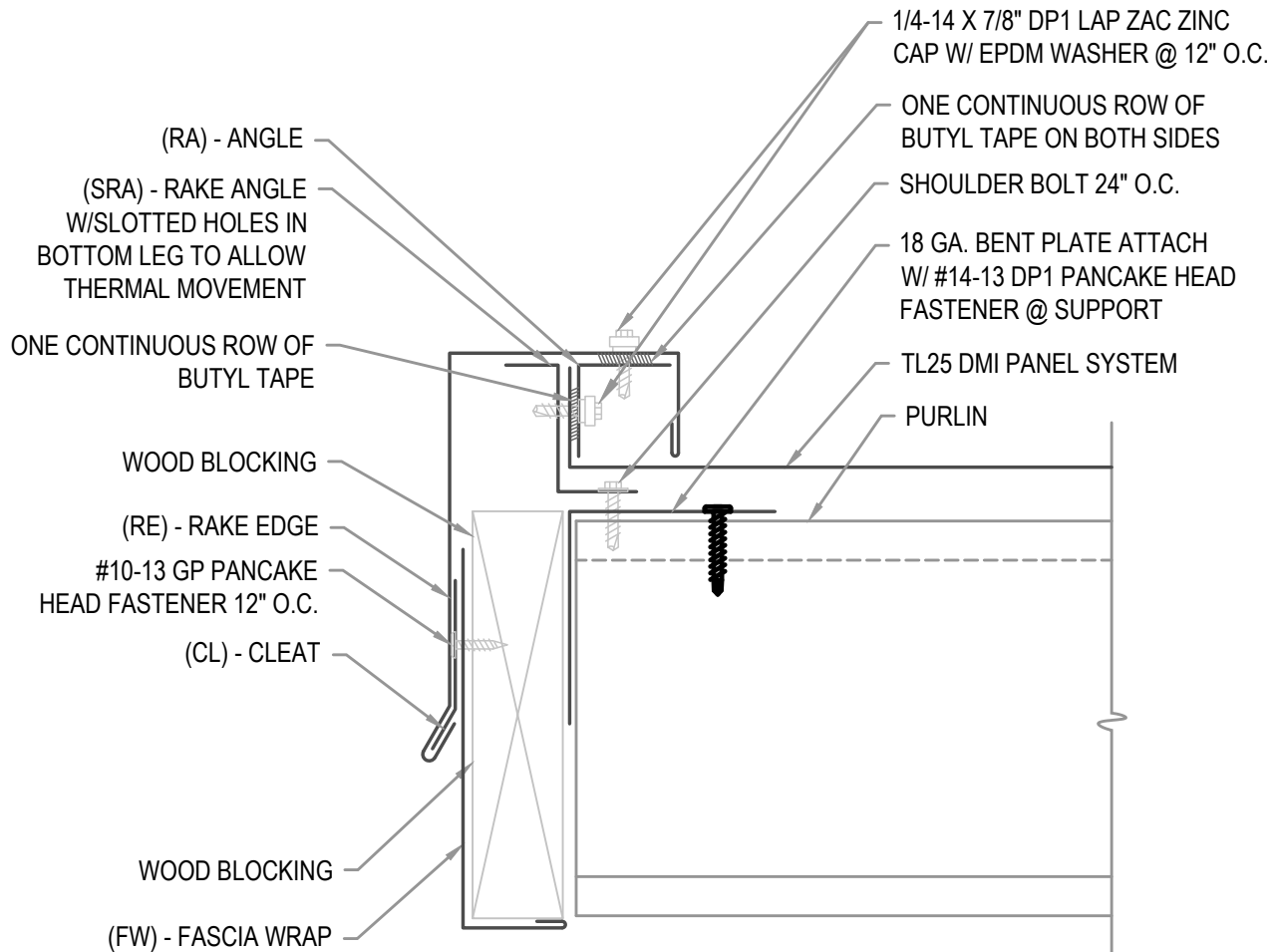
09/18

Scale:

3"=1'-0"

FLASHING LAP NOTE

LAP RAKE EDGE AND FASCIA 2" MINIMUM WITH 1 ROW OF BUTYL SEALANT.



HYDROSTATIC RAKE EDGE

• **PROVEN** • **DEPENDABLE** • **SUSTAINABLE** •
METAL ENVELOPE SYSTEMS SINCE 1988

WWW.DMIMETALS.COM

Detail:

TL25 04-01-PH

Issue/Rev Date:

09/18

Scale:

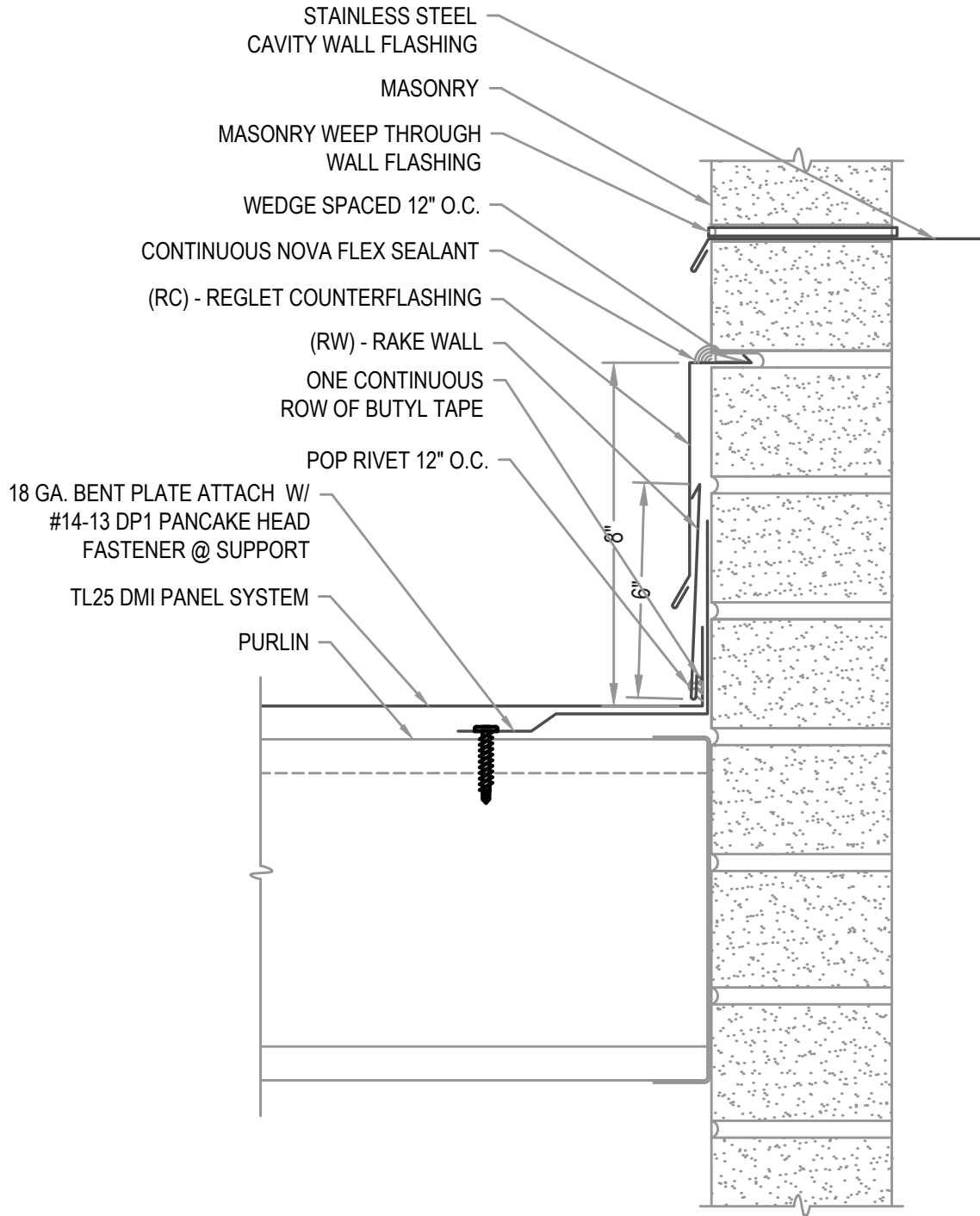
3"=1'-0"

NOTE

REGLET FLASHING TO BE INSTALLED BELOW ALL WEEP HOLES.
SURFACED MOUNT COUNTERFLASHINGS NOT ACCEPTABLE..

FLASHING LAP NOTE

LAP RAKE WALL REGLET 2" MINIMUM WITH 2 ROWS OF BUTYL SEALANT.



HYDROSTATIC RAKE WALL

● **PROVEN** ● **DEPENDABLE** ● **SUSTAINABLE** ●
METAL ENVELOPE SYSTEMS SINCE 1988

WWW.DMIMETALS.COM

Detail:

TL25 05-00-PH

Issue/Rev Date:

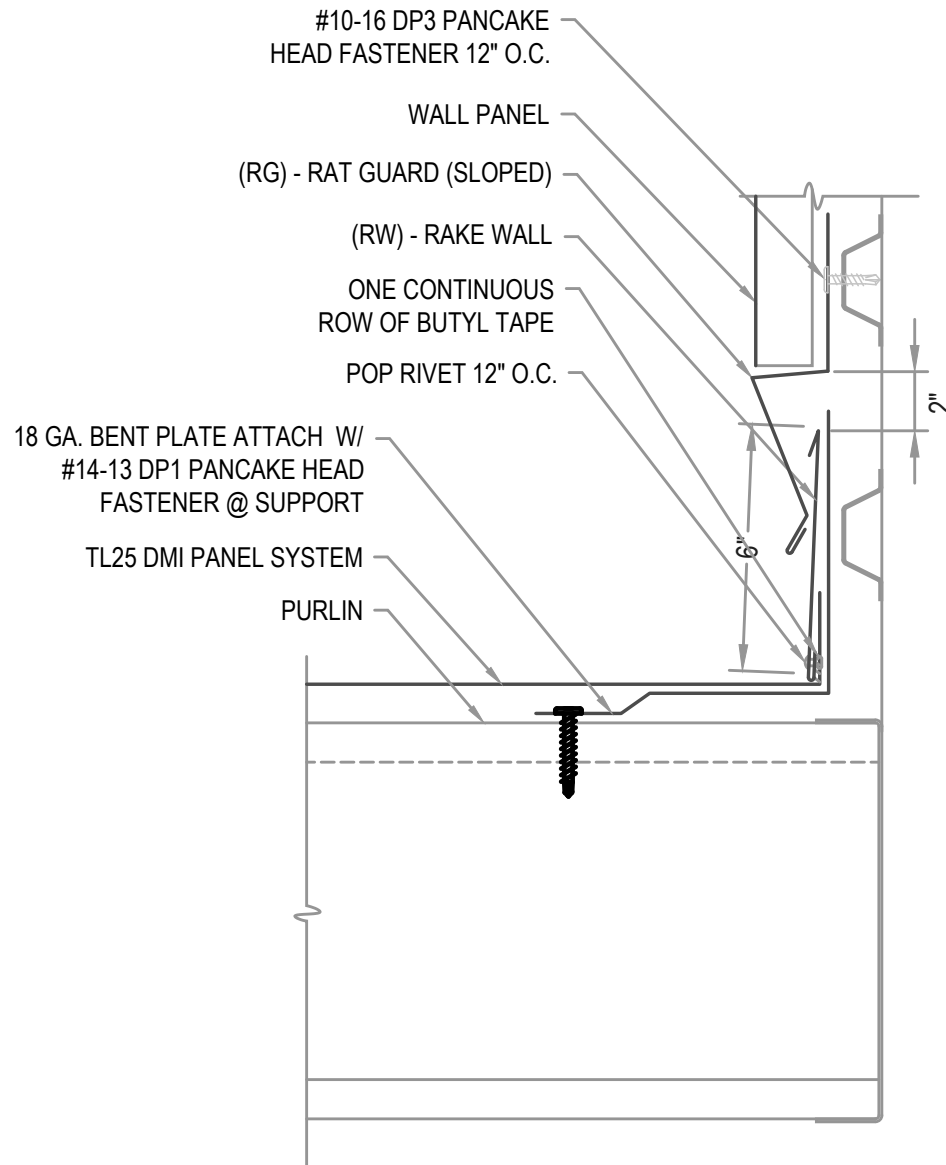
09/18

Scale:

3"=1'-0"

FLASHING LAP NOTE

LAP RAKE WALL AND RAT GUARD (SLOPED) 2" MINIMUM WITH 2 ROWS OF BUTYL SEALANT.



HYDROSTATIC RAKE WALL

• **PROVEN** • **DEPENDABLE** • **SUSTAINABLE** •
METAL ENVELOPE SYSTEMS SINCE 1988

WWW.DMIMETALS.COM

Detail:

TL25 05-01-PH

Issue/Rev Date:

09/18

Scale:

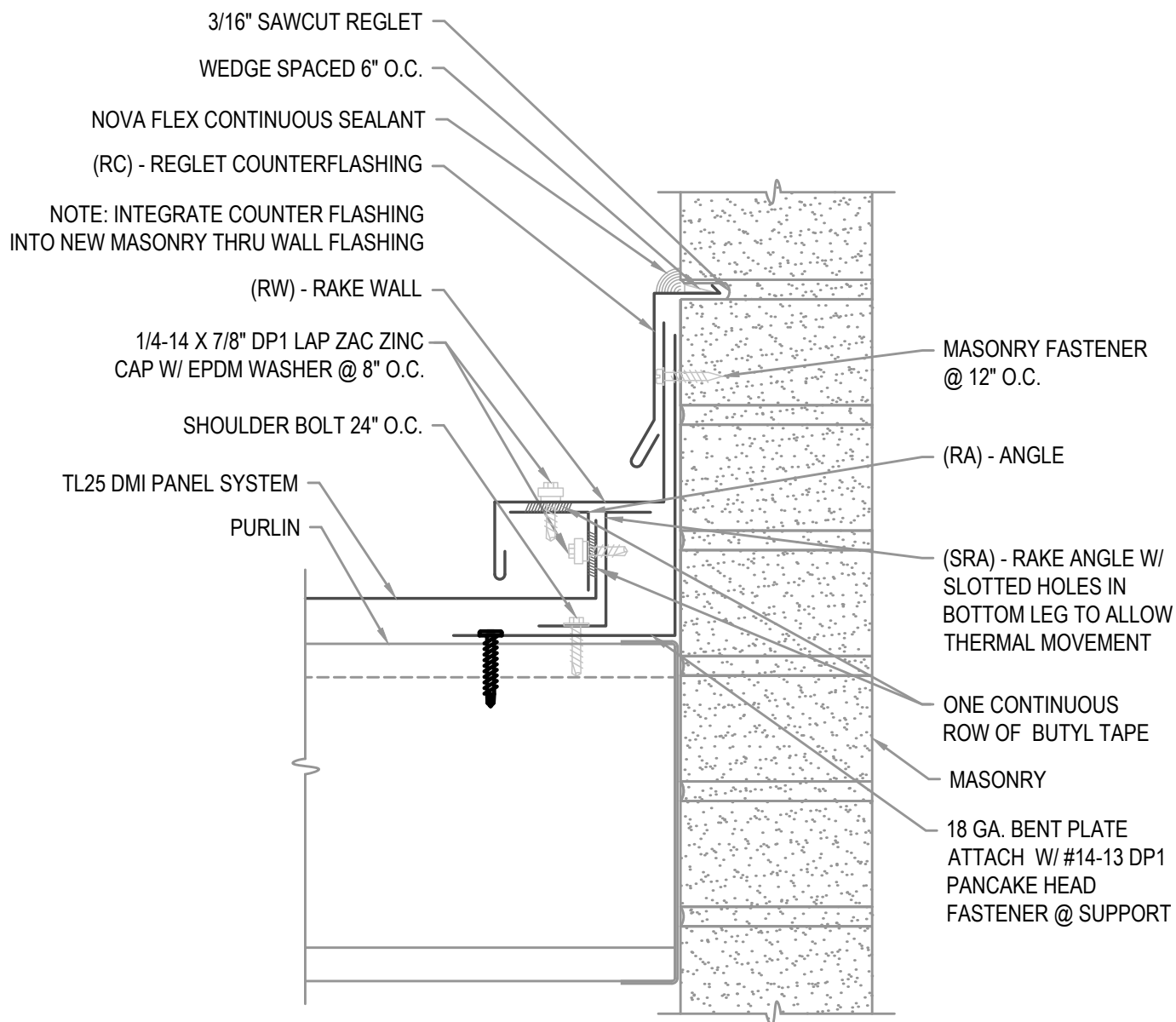
3"=1'-0"

NOTE

REGLET FLASHING TO BE INSTALLED BELOW ALL WEEP HOLES.
SURFACED MOUNT COUNTERFLASHINGS NOT ACCEPTABLE..

FLASHING LAP NOTE

LAP RAKE WALL REGLET 2" MINIMUM WITH 2 ROWS OF BUTYL SEALANT.



HYDROSTATIC RAKE WALL

● **PROVEN** ● **DEPENDABLE** ● **SUSTAINABLE** ●

METAL ENVELOPE SYSTEMS SINCE 1988

WWW.DMIMETALS.COM

Detail:

TL25 05-02-PH

Issue/Rev Date:

09/18

Scale:

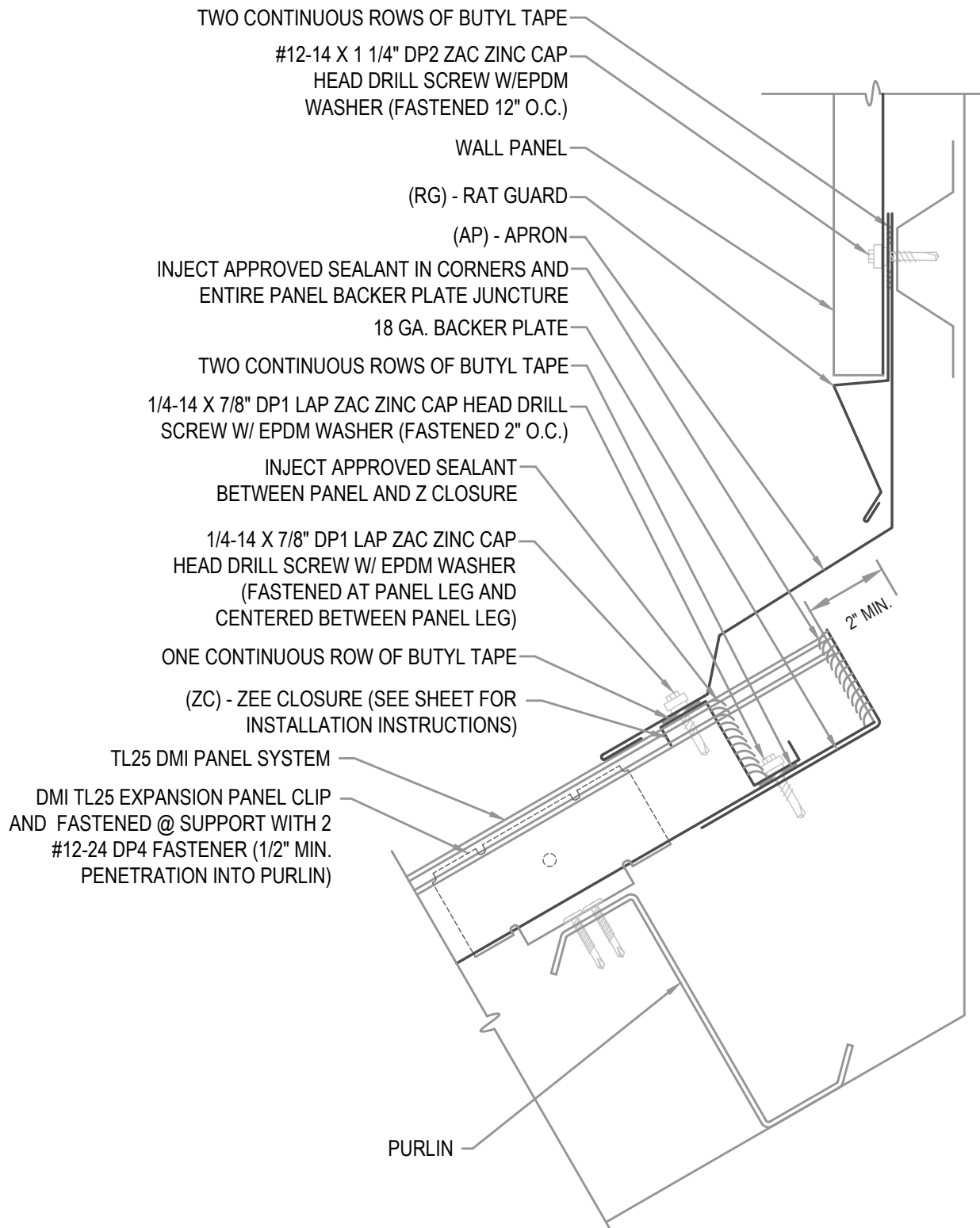
3"=1'-0"

FLASHING LAP NOTE

LAP APRON 2" MINIMUM WITH 2 ROWS OF BUTYL SEALANT.

FASTENER NOTE

ALL EXTERIOR FASTENERS ARE TO BE EITHER STAINLESS OR PLATED CARBON STEEL.



HYDROSTATIC APRON W/ WALL PANEL

• **PROVEN** • **DEPENDABLE** • **SUSTAINABLE** •

METAL ENVELOPE SYSTEMS SINCE 1988

WWW.DMIMETALS.COM

Detail:

TL25 06-00-PH

Issue/Rev Date:

09/18

Scale:

3"=1'-0"



REGLET FLASHING TO BE INSTALLED BELOW ALL WEEP HOLES.
SURFACED MOUNT COUNTERFLASHINGS NOT ACCEPTABLE..

LAP APRON AND REGLET 2" MINIMUM WITH 2 ROWS OF BUTYL SEALANT.

ALL EXTERIOR FASTENERS ARE TO BE EITHER STAINLESS OR PLATED CARBON STEEL.



● **PROVEN** ● **DEPENDABLE** ● **SUSTAINABLE** ●

WWW.DMIMETALS.COM

TL25 06-01-PH

Scale:

09/18

$$3'' = 1' - 0''$$

EXPANSION NOTE

RIDGES EXCEEDING 100'-0" IN LENGTH REQUIRE THE USE OF A 6" COVER PLATE.

FLASHING LAP NOTE

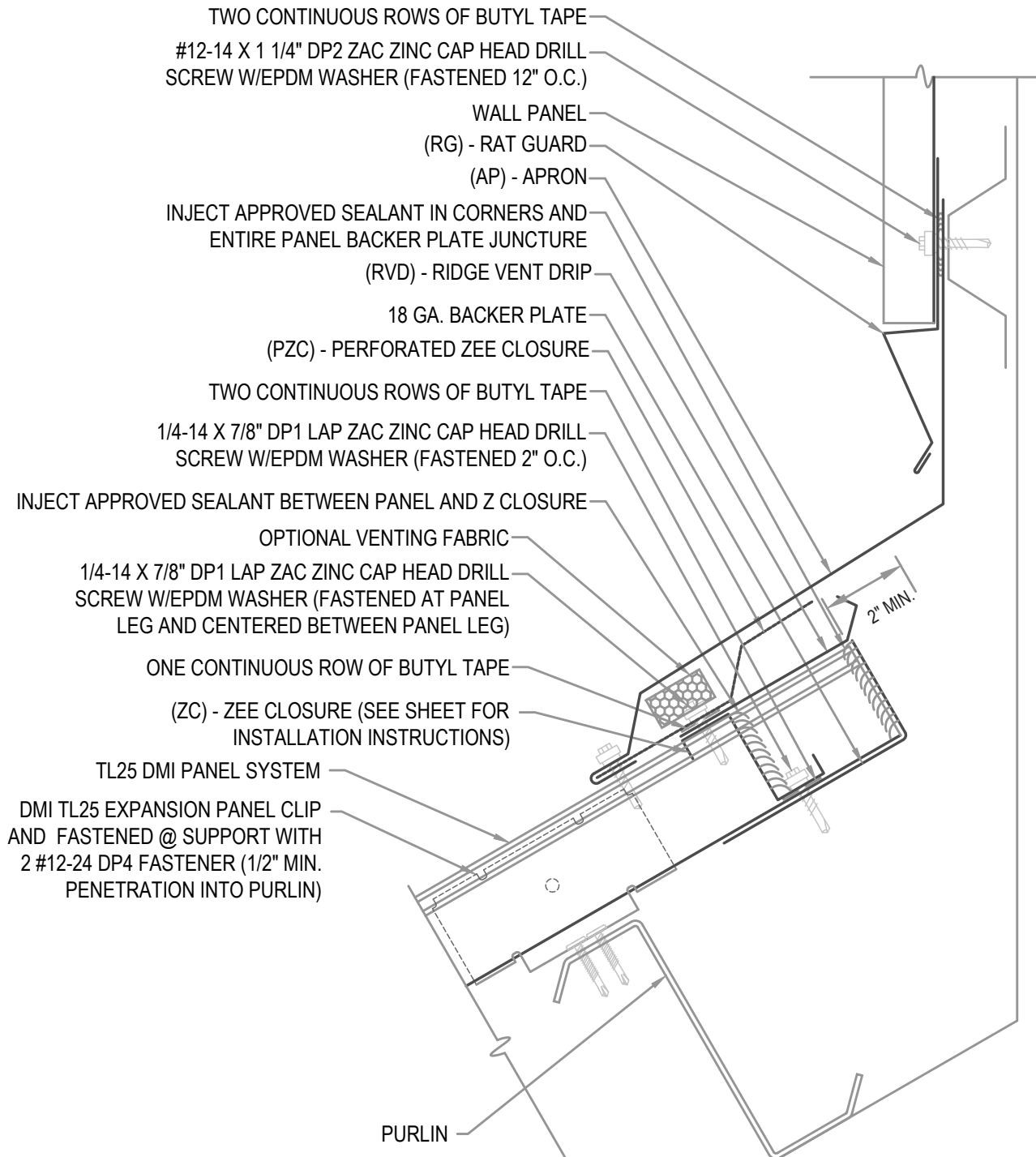
LAP APRON 2" MIN W/ 2 ROWS OF BUTYL SEALANT.
DO NOT POP RIVET LAPPED FLASHINGS.

FASTENER NOTE

ALL EXTERIOR FASTENERS ARE TO BE EITHER STAINLESS OR PLATED CARBON STEEL.

VENTILATION NOTE

DMI PERFORATED Z CLOSURE PROVIDES 23% NET FREE AIR MOVEMENT.
HIP CONDITIONS CAN NOT BE VENTED.



HYDROSTATIC VENTED APRON

• **PROVEN** • **DEPENDABLE** • **SUSTAINABLE** •

METAL ENVELOPE SYSTEMS SINCE 1988

WWW.DMIMETALS.COM

Detail:

TL25 06-02-PH

Issue/Rev Date:

09/18

Scale:

3"=1'-0"

REGLET FLASHING TO BE INSTALLED BELOW ALL WEEP HOLES.
SURFACED MOUNT COUNTERFLASHINGS NOT ACCEPTABLE..

LAP APRON AND REGLET 2" MINIMUM WITH 2 ROWS OF BUTYL SEALANT.

ALL EXTERIOR FASTENERS ARE TO BE EITHER STAINLESS OR PLATED CARBON STEEL.

DMI PERFORATED Z CLOSURE PROVIDES 23% NET FREE AIR MOVEMENT.
HIP CONDITIONS CAN NOT BE VENTED.



WWW.DMIMETALS.COM

$$3'' = 1' - 0''$$

FLASHING LAP NOTE

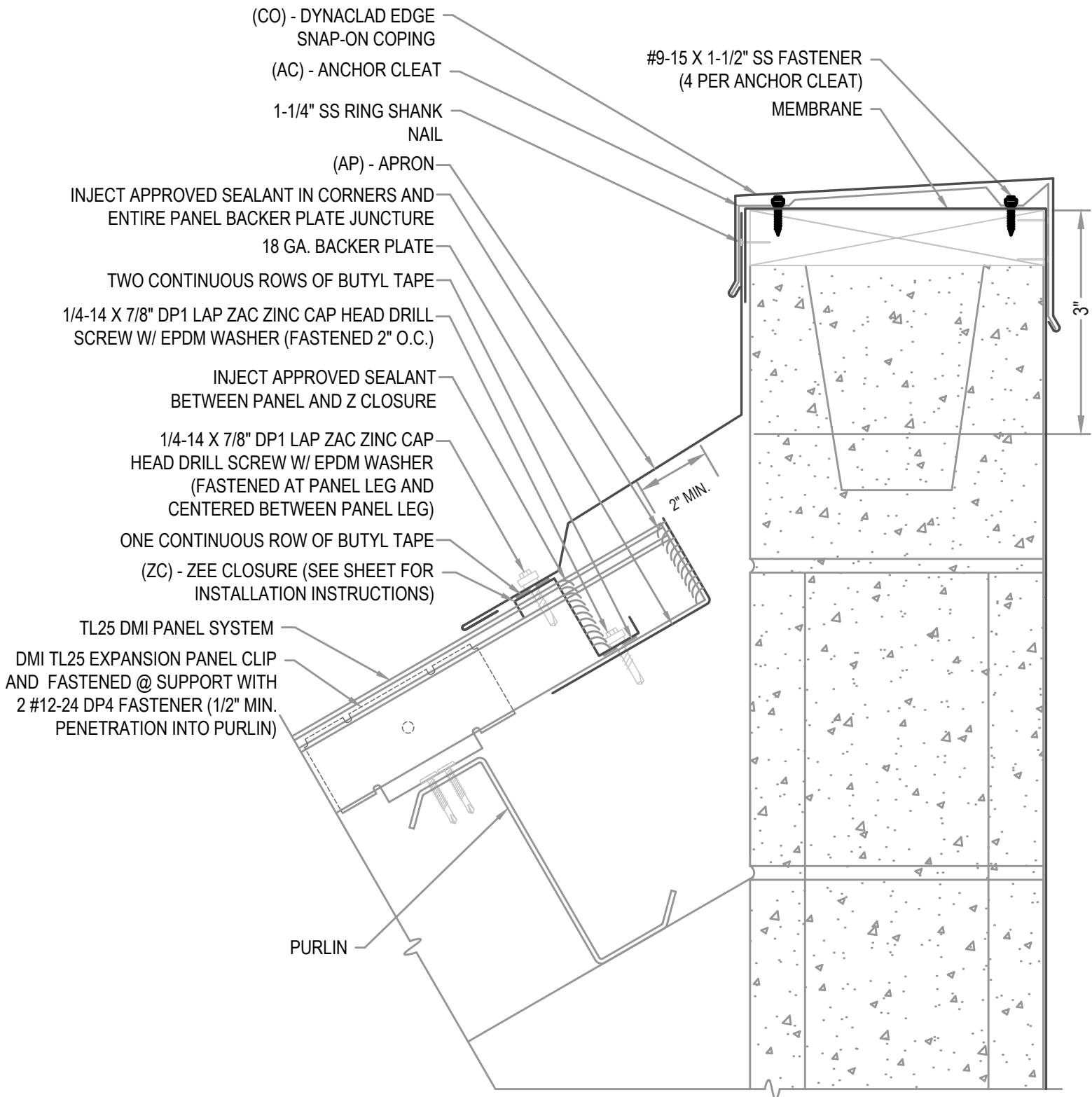
LAP APRON, COPING AND CLEATS 2" MINIMUM WITH 2 ROWS OF BUTYL SEALANT.

FASTENER NOTE

ALL EXTERIOR FASTENERS ARE TO BE EITHER STAINLESS OR PLATED CARBON STEEL.

COPING NOTE

SEE DMI DYNACLAD EDGE INSTALLATION GUIDE FOR COMPLETE FASTENING AND INSTALLATION INFORMATION FOR ES-1 RATED SNAP-ON COPING



HYDROSTATIC APRON W/ COPING

• **PROVEN** • **DEPENDABLE** • **SUSTAINABLE** •

METAL ENVELOPE SYSTEMS SINCE 1988

WWW.DMIMETALS.COM

Detail:

TL25 06-04-PH

Issue/Rev Date:

09/18

Scale:

3"=1'-0"

EXPANSION NOTE

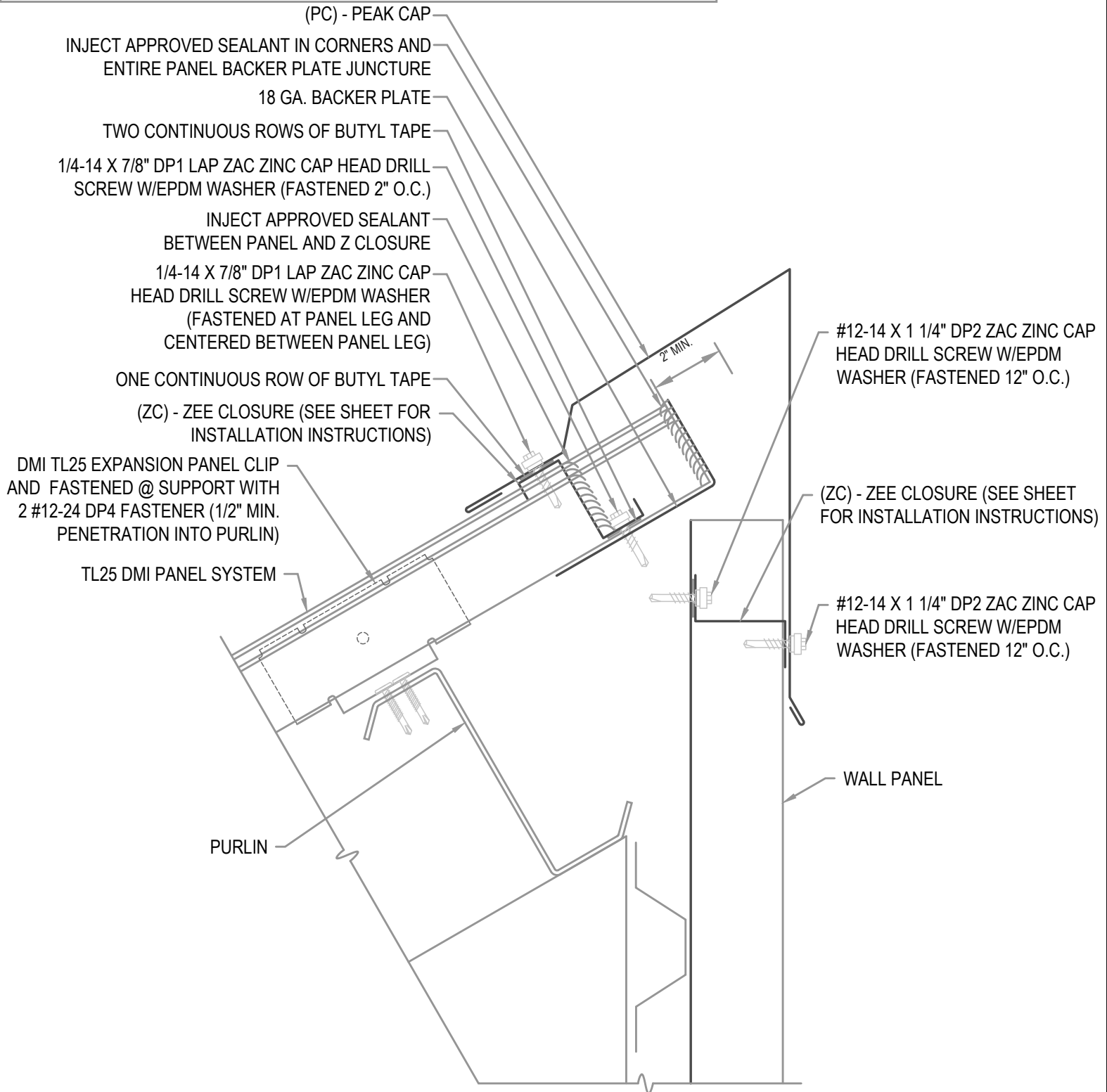
PEAKS EXCEEDING 100'-0" IN LENGTH REQUIRE THE USE OF A 6" COVER PLATE.

FLASHING LAP NOTE

LAP PEAK CAPS 4" MIN W/ 2 ROWS OF BUTYL SEALANT.
DO NOT POP RIVET LAPPED FLASHINGS.

FASTENER NOTE

ALL EXTERIOR FASTENERS ARE TO BE EITHER STAINLESS OR PLATED CARBON STEEL.



HYDROSTATIC PEAK

• **PROVEN** • **DEPENDABLE** • **SUSTAINABLE** •
METAL ENVELOPE SYSTEMS SINCE 1988

WWW.DMIMETALS.COM

Detail:

TL25 07-00-PH

Issue/Rev Date:

09/18

Scale:

3"=1'-0"

EXPANSION NOTE

PEAKS EXCEEDING 100'-0" IN LENGTH REQUIRE THE USE OF A 6" COVER PLATE.

FLASHING LAP NOTE

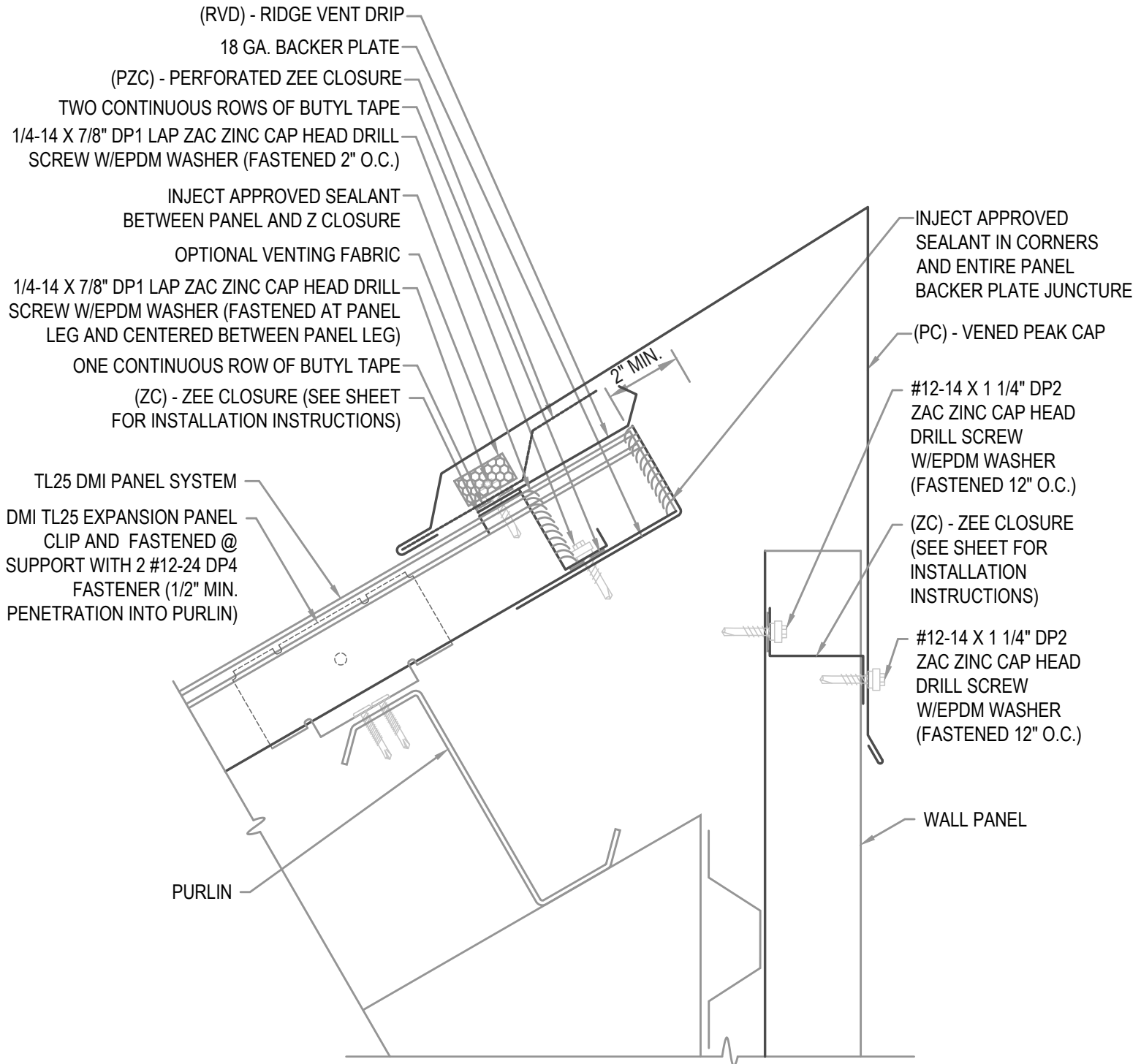
LAP PEAK CAPS 4" MIN W/ 2 ROWS OF BUTYL SEALANT.
DO NOT POP RIVET LAPPED FLASHINGS.

FASTENER NOTE

ALL EXTERIOR FASTENERS ARE TO BE EITHER STAINLESS OR PLATED CARBON STEEL.

VENTILATION NOTE

DMI PERFORATED Z CLOSURE PROVIDES 23% NET FREE AIR MOVEMENT.
HIP CONDITIONS CAN NOT BE VENTED.



HYDROSTATIC VENTED PEAK

• **PROVEN** • **DEPENDABLE** • **SUSTAINABLE** •
METAL ENVELOPE SYSTEMS SINCE 1988

WWW.DMIMETALS.COM

Detail:

TL25 07-01-PH

Issue/Rev Date:

09/18

Scale:

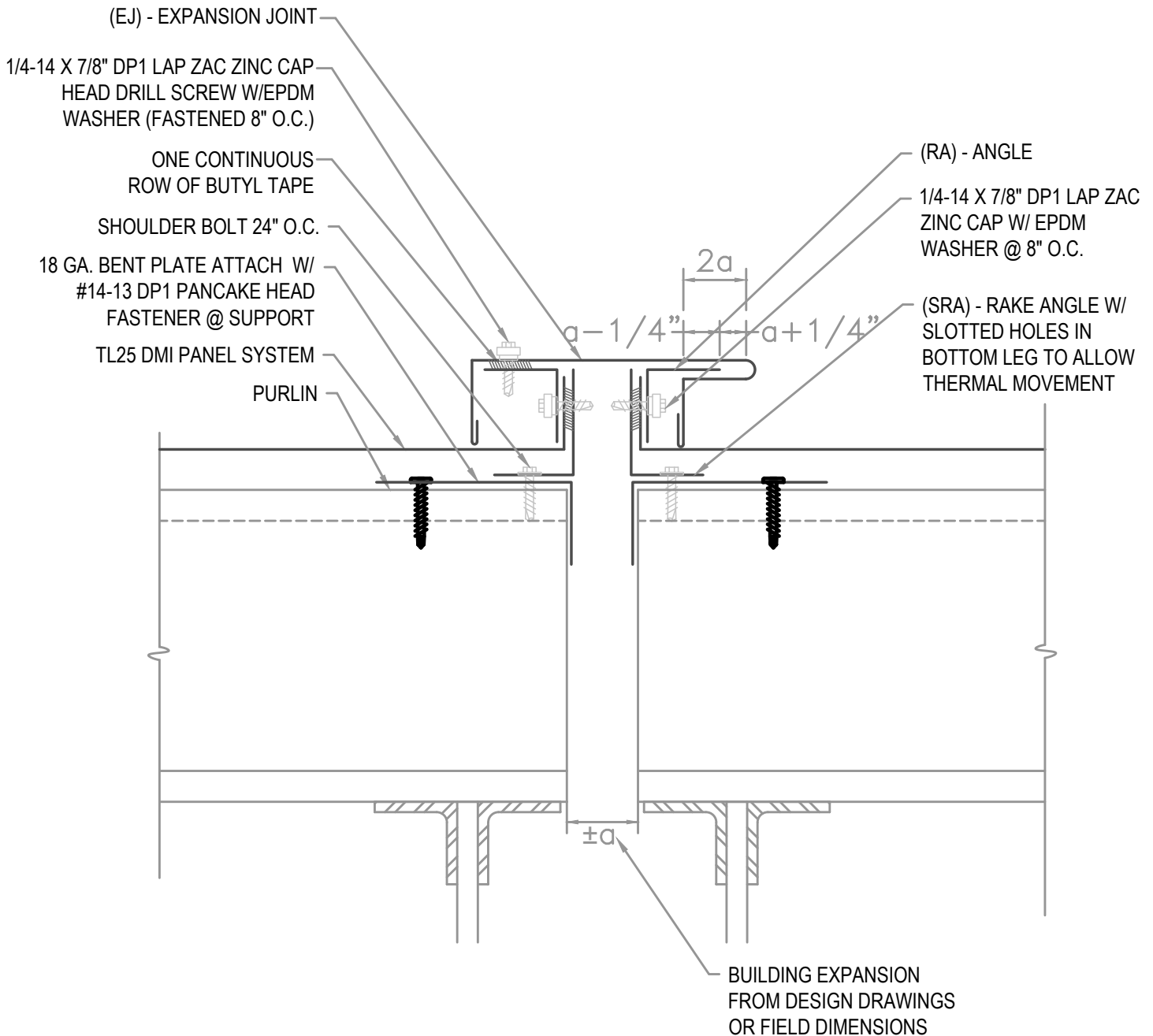
3"=1'-0"

FLASHING LAP NOTE

LAP EXPANSION JOINT AND J CLOSURE 2" MINIMUM WITH 2 ROWS OF BUTYL SEALANT.

FASTENER NOTE

ALL EXTERIOR FASTENERS ARE TO BE EITHER STAINLESS OR PLATED CARBON STEEL.



HYDROSTATIC EXPANSION JOINT

• **PROVEN** • **DEPENDABLE** • **SUSTAINABLE** •

METAL ENVELOPE SYSTEMS SINCE 1988

WWW.DMIMETALS.COM

Detail:

TL25 08-00-PH

Issue/Rev Date:

09/18

Scale:

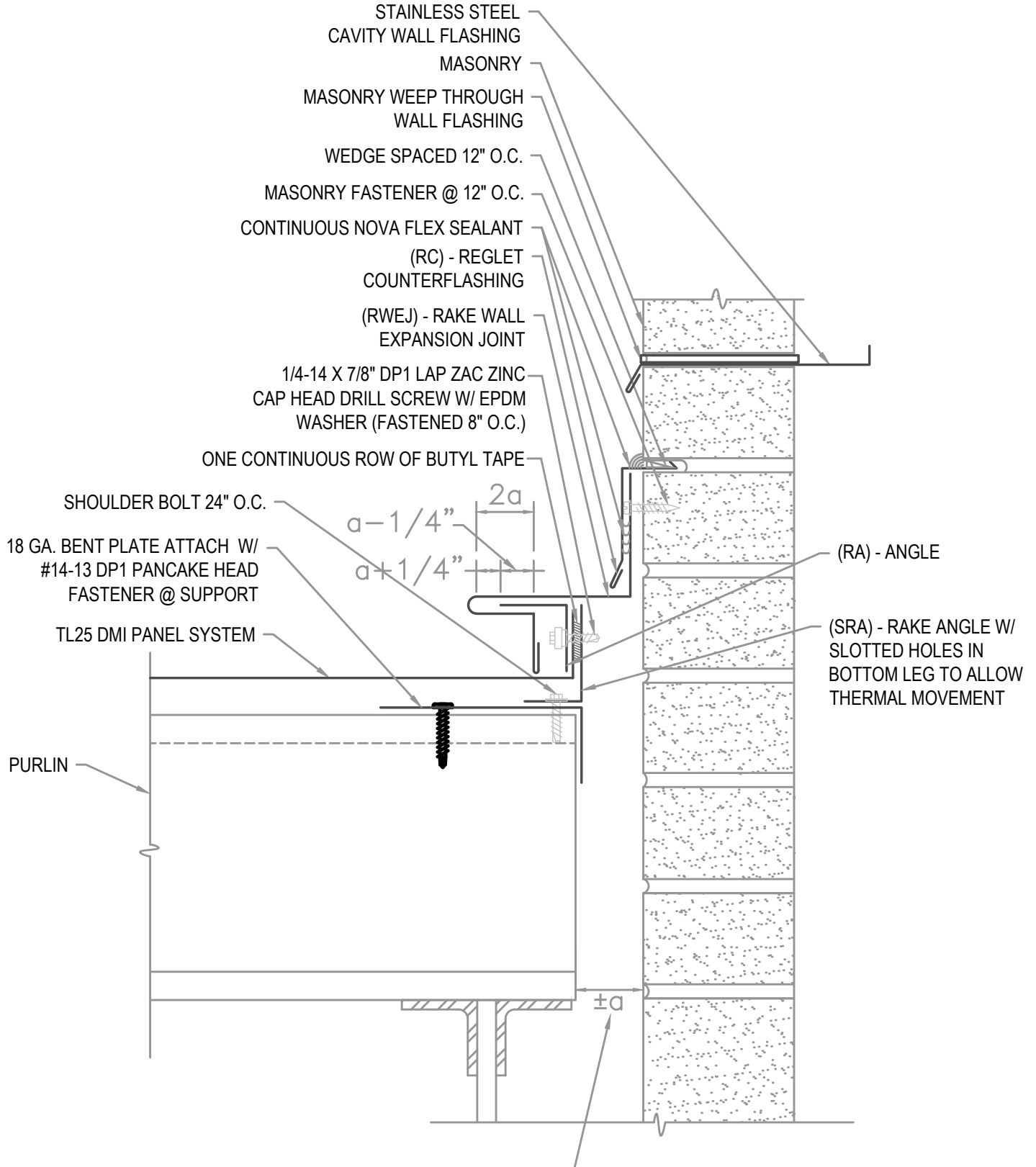
3"=1'-0"

FLASHING LAP NOTE

LAP EXPANSION JOINT AND J CLOSURE 2" MINIMUM WITH 2 ROWS OF BUTYL SEALANT.

FASTENER NOTE

ALL EXTERIOR FASTENERS ARE TO BE EITHER STAINLESS OR PLATED CARBON STEEL.



HYDROSTATIC RAKE WALL EXPANSION JOINT

● PROVEN ● DEPENDABLE ● SUSTAINABLE ●

METAL ENVELOPE SYSTEMS SINCE 1988

WWW.DMIMETALS.COM

Detail:

TL25 08-01-PH

Issue/Rev Date:

09/18

Scale:

3"=1'-0"

NOTE

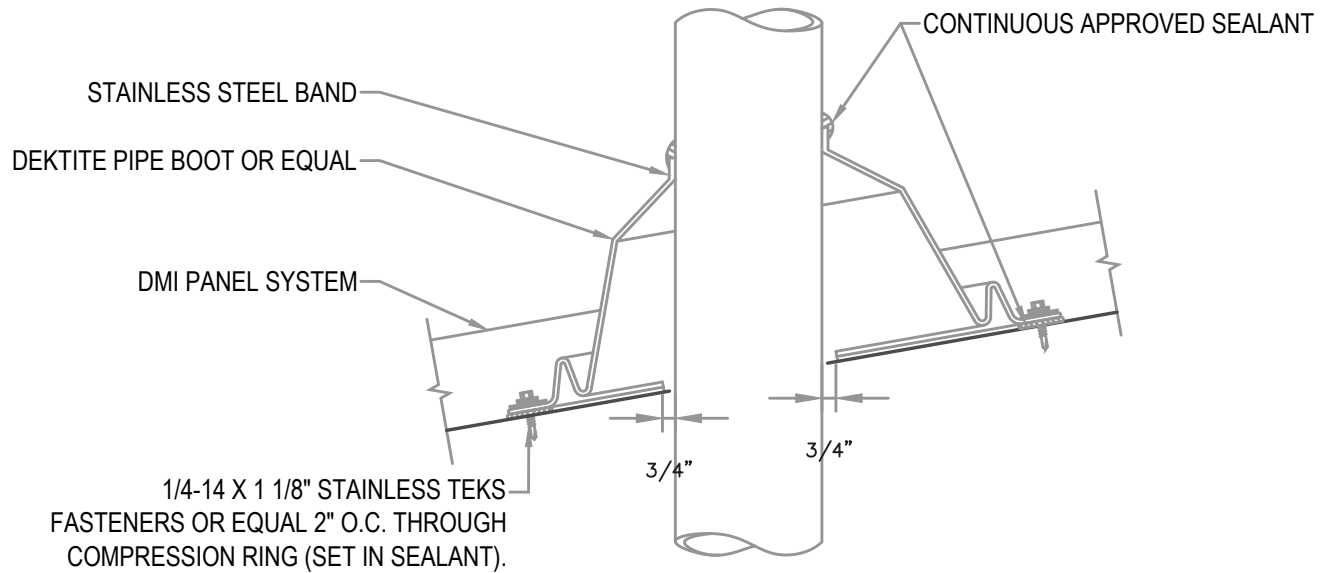
DO NOT ATTACH INTO SOLID SUBSTRATE BELOW.

BOOT SHALL NOT INTERSECT STANDING SEAM VERTICAL LEG. INSTALL IN FLAT AREA OF PANEL ONLY.

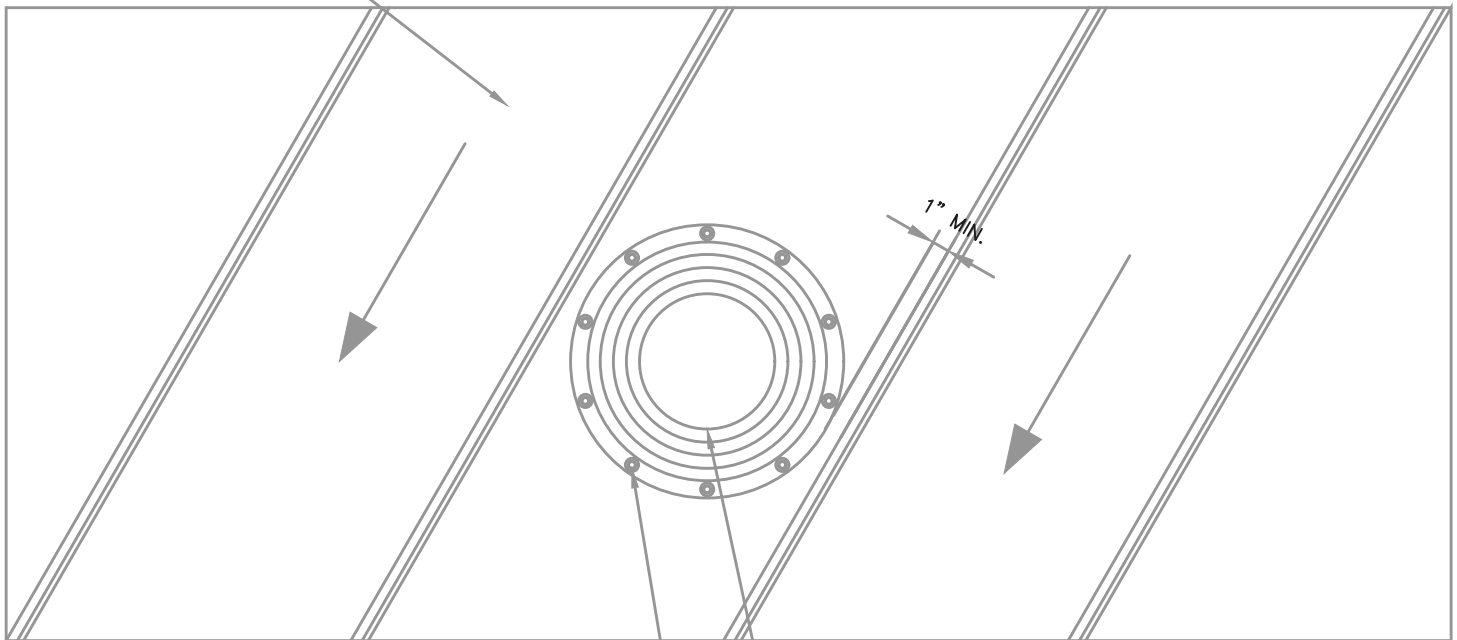
IF USING A SQUARE BOOT DETAIL BE SURE TO SET BOOT IN A DIAGONAL OR DIAMOND TO ALLOW WATER FLOW.

FASTENER NOTE

ALL EXTERIOR FASTENERS ARE TO BE EITHER STAINLESS OR PLATED CARBON STEEL.



DMI PANEL SYSTEM



1/4 X 1 1/8" STAINLESS TEKS FASTENERS OR
EQUAL 2" O.C. THROUGH COMPRESSION RING

DEKTITE PIPE BOOT OR EQUAL



HYDROSTATIC PIPE BOOT DETAIL

• **PROVEN** • **DEPENDABLE** • **SUSTAINABLE** •
METAL ENVELOPE SYSTEMS SINCE 1988

WWW.DMIMETALS.COM

Detail:

TL25 09-00-PH

Issue/Rev Date:

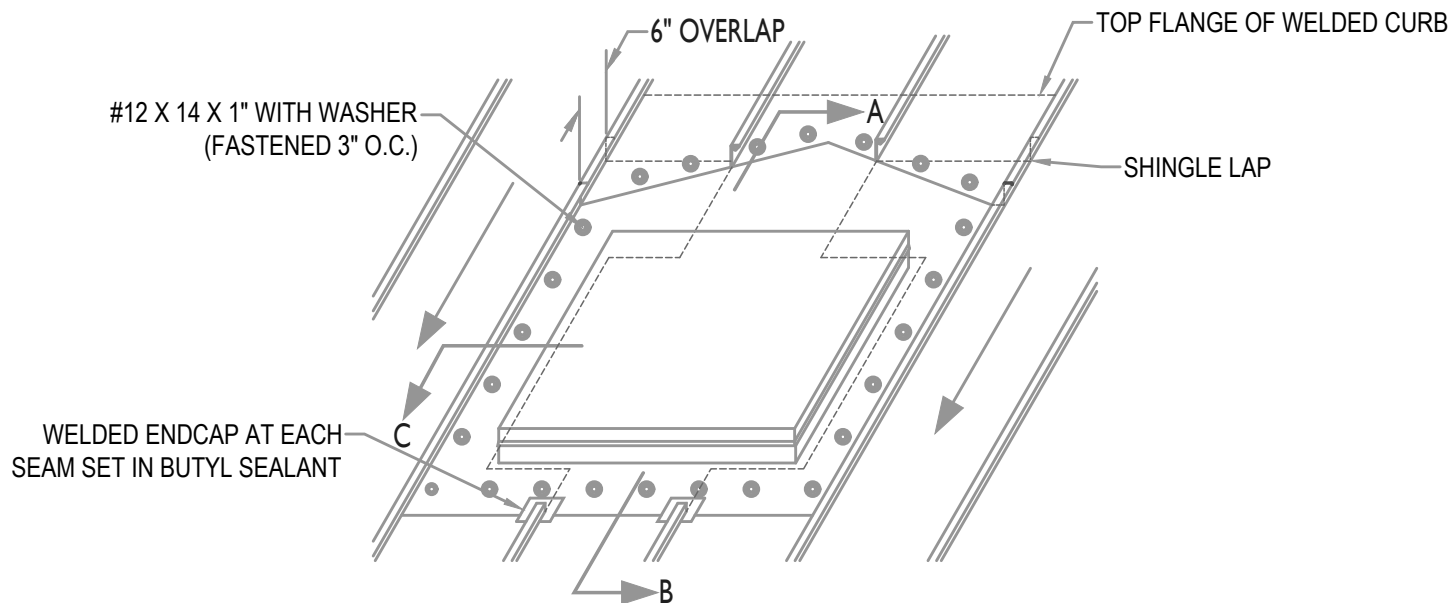
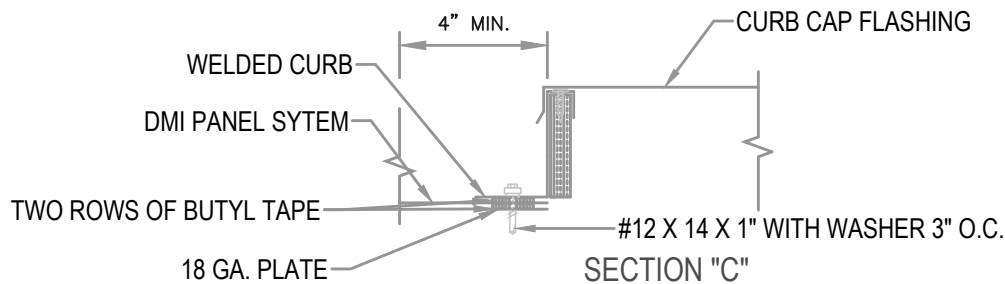
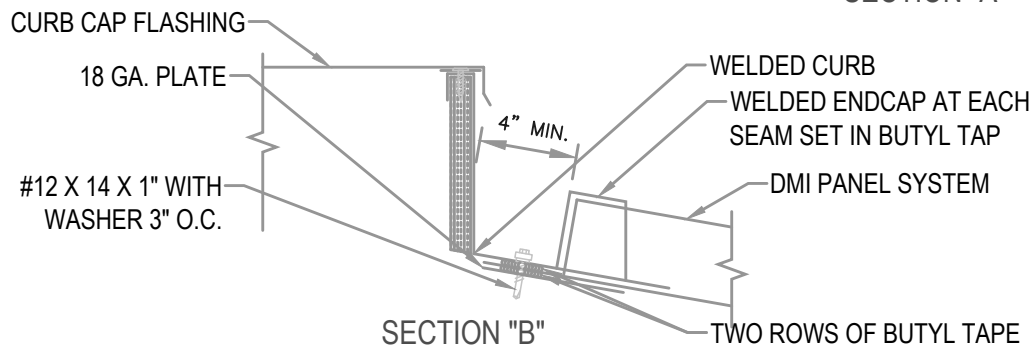
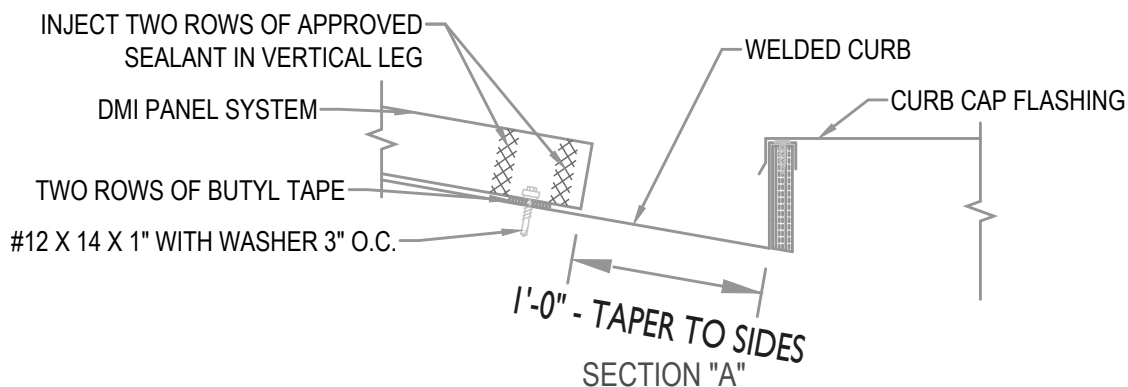
09/18

Scale:

3"=1'-0"

FASTENER NOTE

ALL EXTERIOR FASTENERS ARE TO BE EITHER STAINLESS OR PLATED CARBON STEEL.

**WELDED CURB DETAIL INSTRUCTIONS****HYDROSTATIC CURB****• PROVEN • DEPENDABLE • SUSTAINABLE •****METAL ENVELOPE SYSTEMS SINCE 1988**

WWW.DMIMETALS.COM

Detail:

TL25 10-00-PH

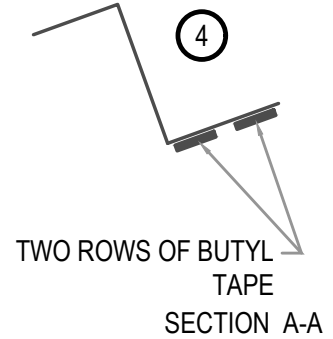
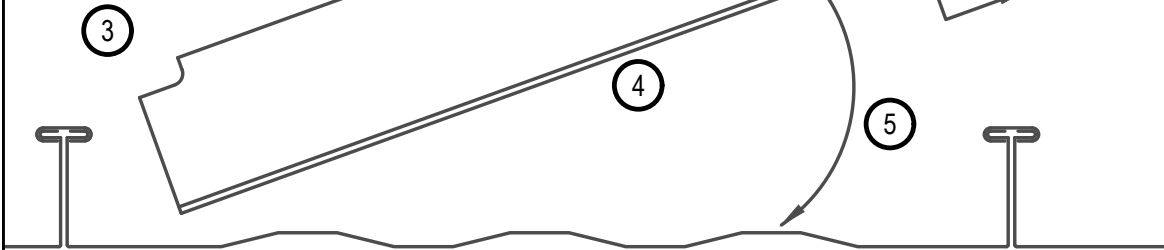
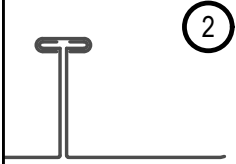
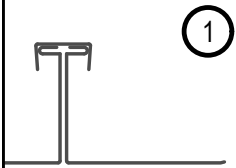
Issue/Rev Date:

09/18

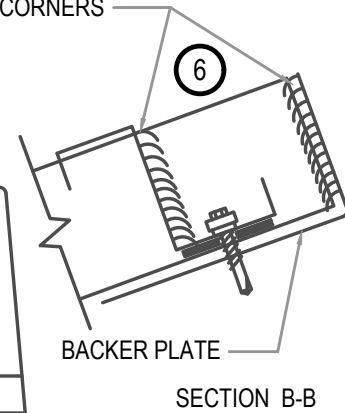
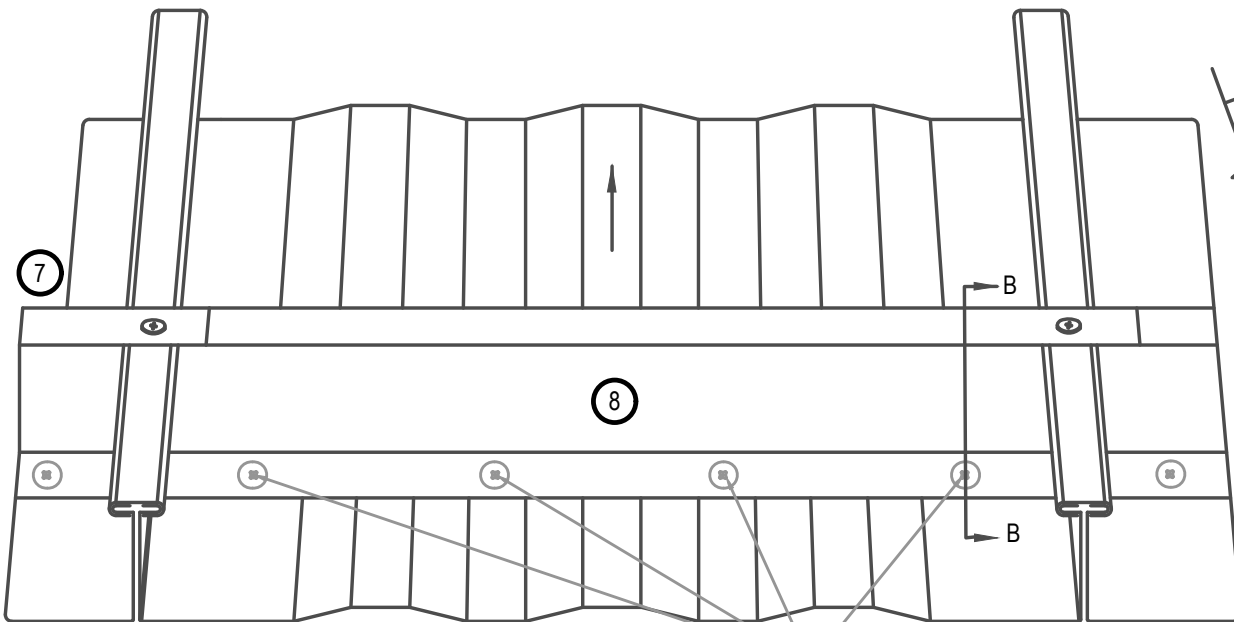
Scale:

3"=1'-0"

- Step 2: Fold seam cap over panel seam
 Step 3: Notch both sides of zee closure.
 Step 4: Apply two rows of butyl tape to underside of zee.
 Step 5: Install zee closure.
 Step 6: Seal all contact points of zee and panel legs. Also seal over top of panel leg.
 Step 7: Attach top of zee to panel rib.
 Step 8: Fasten zee through panel to backer plate



INJECT DOW CORNING 791 OR EQUAL SEALANT IN CORNERS



NOTE: BACKER PLATE NOT SHOWN FOR CLARITY

FASTENERS PER SHOP DRAWINGS



HYDROSTATIC Z INSTALLATION GUIDE

• **PROVEN** • **DEPENDABLE** • **SUSTAINABLE** •
METAL ENVELOPE SYSTEMS SINCE 1988

WWW.DMIMETALS.COM

Detail:
TL25 11-00-PH

Issue/Rev Date:

09/18

Scale:

3"=1'-0"