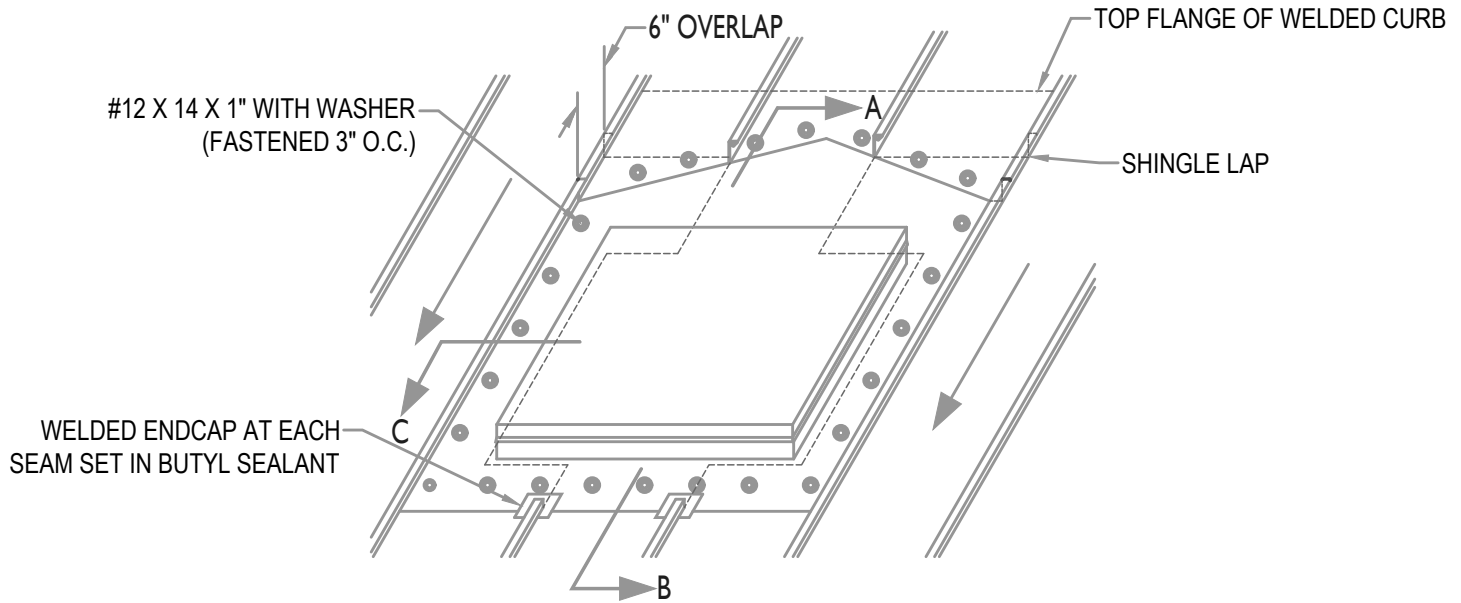
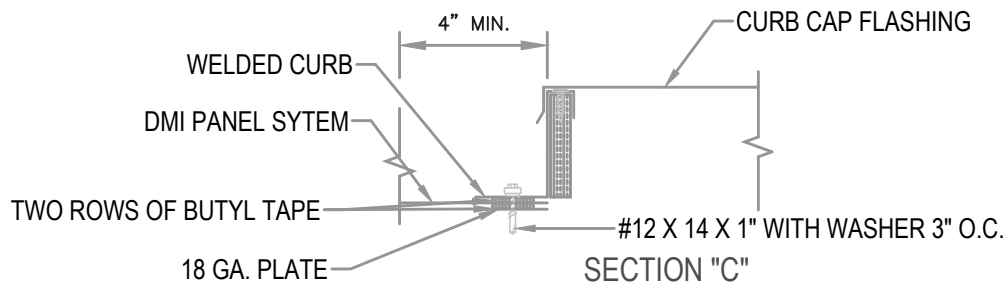
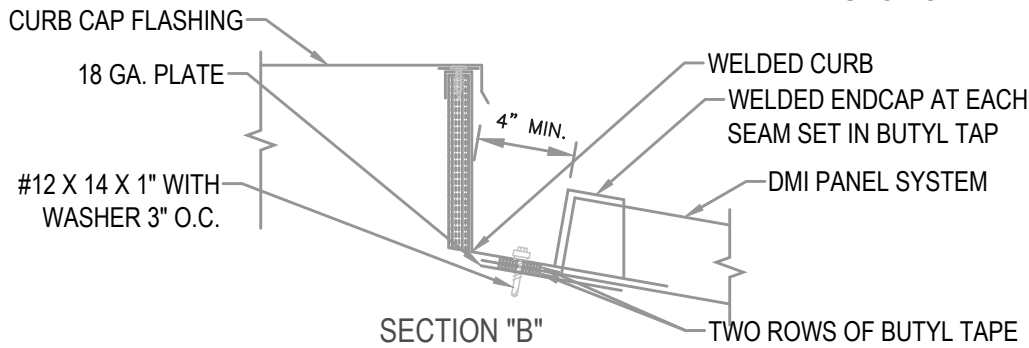
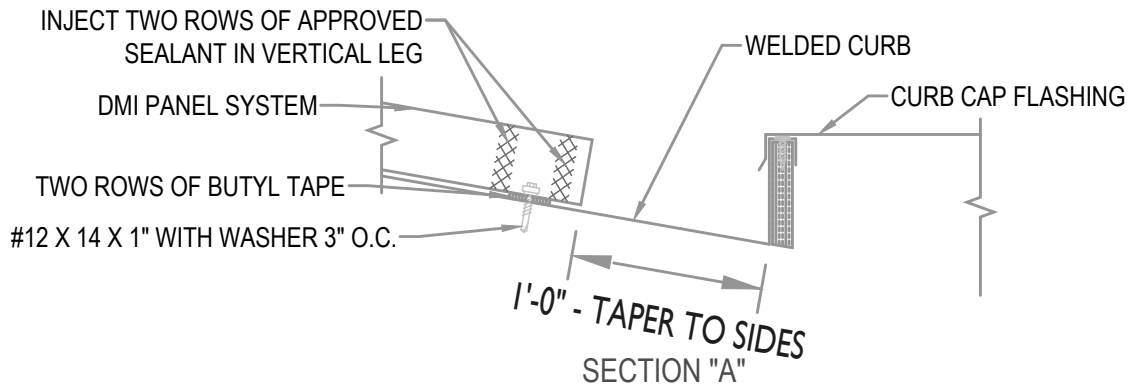


FASTENER NOTE

ALL EXTERIOR FASTENERS ARE TO BE EITHER STAINLESS OR PLATED CARBON STEEL.



WELDED CURB DETAIL INSTRUCTIONS



HYDROSTATIC CURB

• **PROVEN** • **DEPENDABLE** • **SUSTAINABLE** •
METAL ENVELOPE SYSTEMS SINCE 1988

WWW.DMIMETALS.COM

Detail:
TL25 10-00-PH

Issue/Rev Date:

09/18

Scale:

3"=1'-0"