

TEE-LOCK TL25 is a structural panel that is mechanically seamed during installation. The panel is a bi-directional system by design which installs in two directions from a given starting point. TEE-LOCK provides installers more control during installation over seam layout and allows symmetry of the panel area. The one piece clip allows for unlimited expansion and contraction.

Uses & Applications

Product uses include low to high slope roofing, vertical fascia, equipment screens, mansards, and wall panels. This system may also be installed on tapered roof areas.

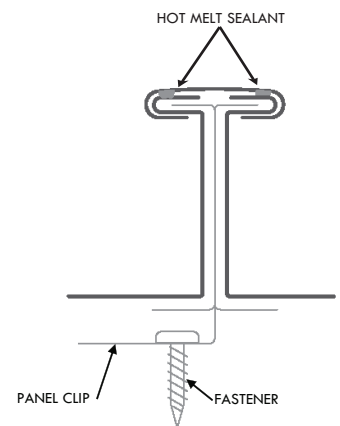
Advantages

- Factory Applied Hot Melt Sealant - for superior watertightness
- Bi-Directional Mechanically Seaming - panel seaming is simplified
- Mechanically seamed - may be installed on low slope applications down to 1/2:12 slope
- Panel design allows for individual panels to be removed and/or replaced if necessary
- One Piece Clip - allows for thermal expansion and contraction
- Continuous Roll Formed Lengths - eliminates need for panel lap joints (4' min. panel length)
- Total System Warranties available - for total confidence

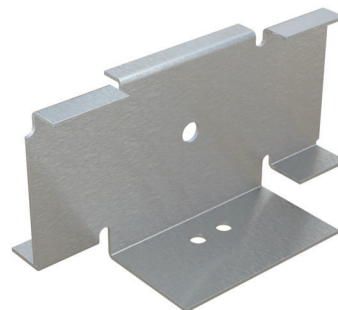
Performance Tested

- UL-580 Wind Uplift
- ASTM E1592 Uniform Static Air Pressure
- ASTM E1646 Water Penetration
- ASTM E1680 Air Leakage
- ASTM E2140 Static Water Penetration
- ASTM E1996 Impact Resistance & Cyclic Pressure

Please consult DMI for applicability of test reports for your project.



Seam Cross Section



Expansion Clip

800.828.1510 ■ www.dmimetals.com ■ sales@dmimetals.com

PROVEN. DEPENDABLE. SUSTAINABLE.

METAL ENVELOPE SYSTEMS SINCE 1988

TEE-LOCK TL25



Project Name: _____
 Architect: _____
 Installing Contractor: _____
 General Contractor: _____
 Specification Section: _____

Stiffener Profile



DynaClad® PVDF Color Chart



Custom Colors Available

Colors shown are samples and may vary slightly from actual material.
 Please consult DMI Color Chart for stacking color availability.

†Metallic colors are directionally sensitive and therefore entire roof areas should be ordered at once time to ensure uniformity.

*Brite Red has a clear coat. **Premium colors carry an upcharge.

Panel Width

12"
 16"
 18" (17.625")

Clip

Expansion

Substrate

24 ga. Galvalume®
 22 ga. Galvalume®
 .032 Aluminum
 .040 Aluminum

Embossed:

Consult DMI for minimum quantities, upcharges, set up fees and extended lead times

Standard Finishes

DynaClad® PVDF: _____
 Acrylic Coated Galvalume (Acrylume®)
 Clear Anodized Aluminum

Premium Finishes*

DynaClad® Metallic PVDF: _____
 DynaClad® Brite Red PVDF
 DynaClad® Cobalt Blue PVDF
 DynaClad® Standard Color PVDF w/ Clearcoat: _____
 DynaClad® Premium Color PVDF w/ Clearcoat: _____
 Custom Color: _____

*Premium Colors subject to minimum quantities, extended lead times and upcharges.
 Consult DMI for details.

Warranty

Finish

DynaClad® Paint Finish
 Galvalume® 20 Year - 6 Month (Substrate)
 Aluminum Sheet 2 Year (Substrate)

Watertight

DynaClad® Metal Roofing System: _____
 DynaClad® Metal Roofing System NDL: _____

Since 1988 Dimensional Metals, Inc. (DMI) has specialized in the manufacturing of architectural metal roof and wall panel systems as well as fabricated architectural sheet metal for the construction industry. We are backed by decades of proven metal envelope design, dependable Technical Field Services, and an Engineering Department delivering sustainable solutions. You are sure to find the product that will best enhance your design.

800.828.1510 ■ www.dmimetals.com ■ sales@dmimetals.com

PROVEN. DEPENDABLE. SUSTAINABLE.

METAL ENVELOPE SYSTEMS SINCE 1988

10132020