

**NOTE**

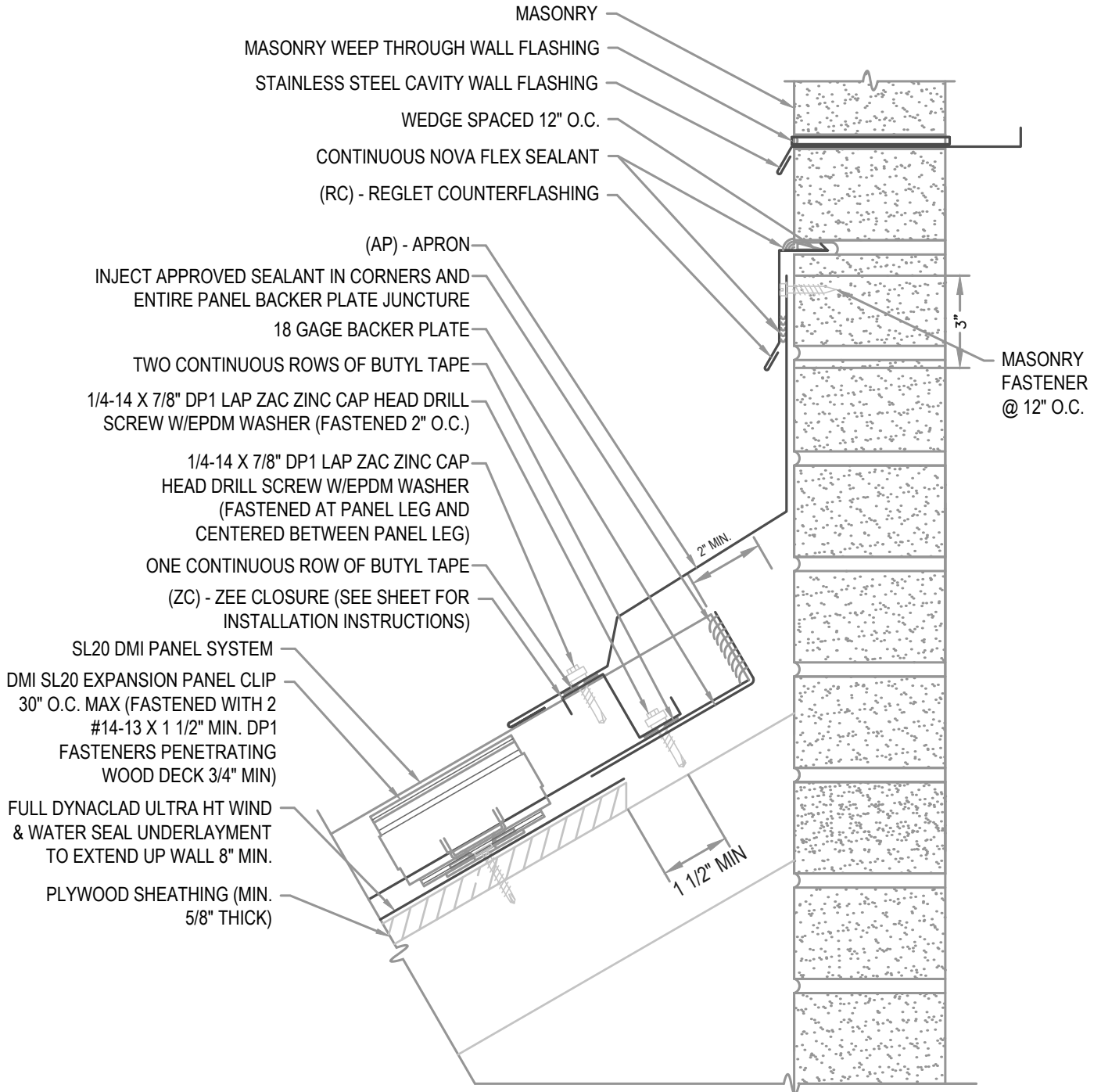
REGLET FLASHING TO BE INSTALLED BELOW ALL WEEP HOLES.  
SURFACED MOUNT COUNTERFLASHINGS NOT ACCEPTABLE.

**FLASHING LAP NOTE**

LAP APRON AND REGLET 2" MINIMUM WITH 2 ROWS OF BUTYL SEALANT.

**FASTENER NOTE**

ALL EXTERIOR FASTENERS ARE TO BE EITHER STAINLESS OR PLATED CARBON STEEL.



**HYDROSTATIC APRON**

● **PROVEN** ● **DEPENDABLE** ● **SUSTAINABLE** ●  
**METAL ENVELOPE SYSTEMS SINCE 1988**

WWW.DMIMETALS.COM

Detail:

**SL20 06-01-WH**

Issue/Rev Date:

01/17

Scale:

3"=1'-0"