

### GUTTER LAP NOTE

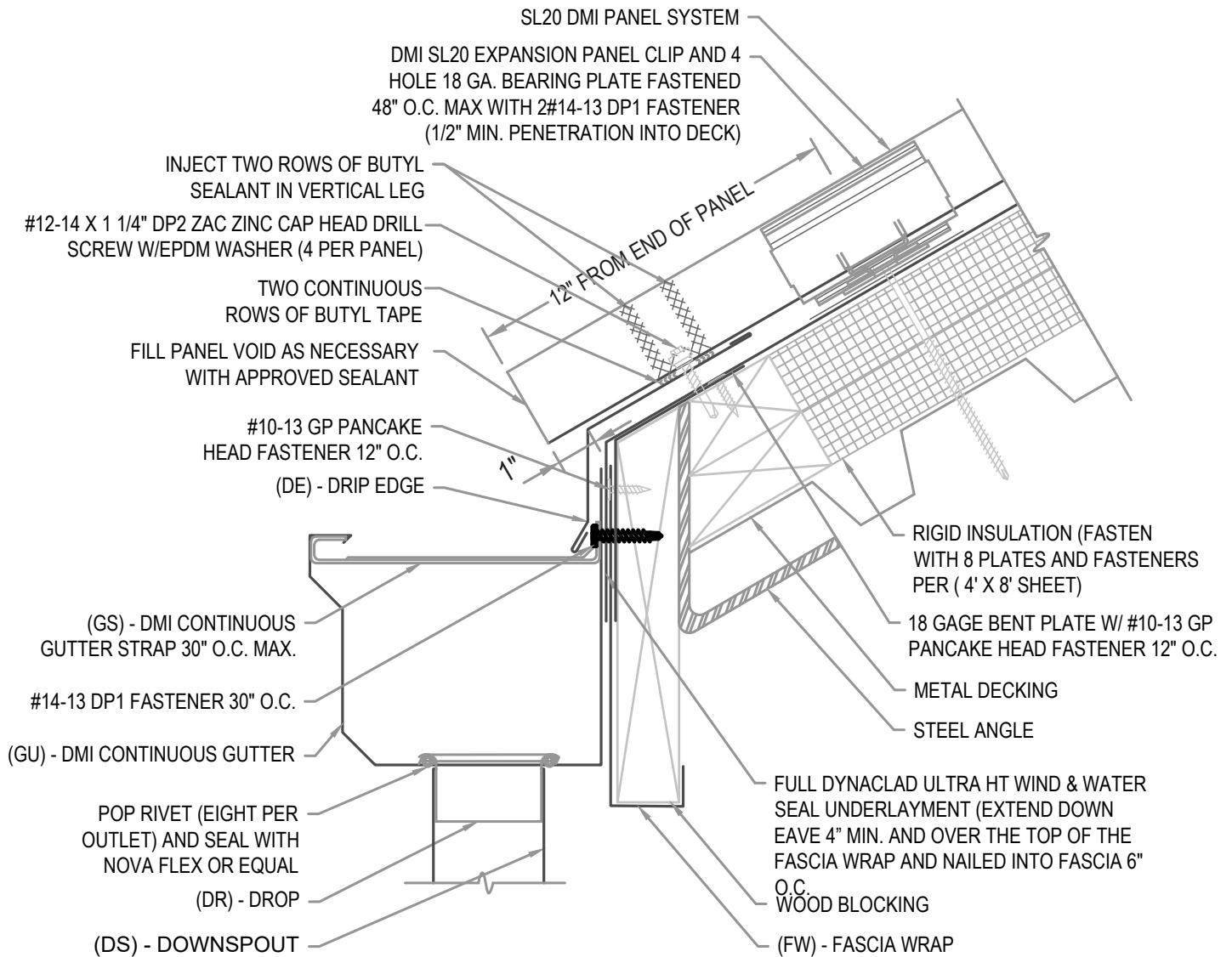
LAP GUTTER 3" MIN W/ 2 ROWS OF APPROVED SEALANT AND POP RIVET JOINT 2" O.C. SET IN AND CAP POP RIVETS IN APPROVED SEALANT.

### FLASHING LAP NOTE

LAP FLASHINGS 2" MIN W/ 1 ROW OF BUTYL SEALANT.

### FASTENER NOTE

ALL EXTERIOR FASTENERS ARE TO BE EITHER STAINLESS OR PLATED CARBON STEEL.



## HYDROSTATIC EAVE W/ GUTTER

• **PROVEN** • **DEPENDABLE** • **SUSTAINABLE** •  
**METAL ENVELOPE SYSTEMS SINCE 1988**

[WWW.DMIMETALS.COM](http://WWW.DMIMETALS.COM)

Detail:

**SL20 01-00-IH**

Issue/Rev Date:

**01/17**

Scale:

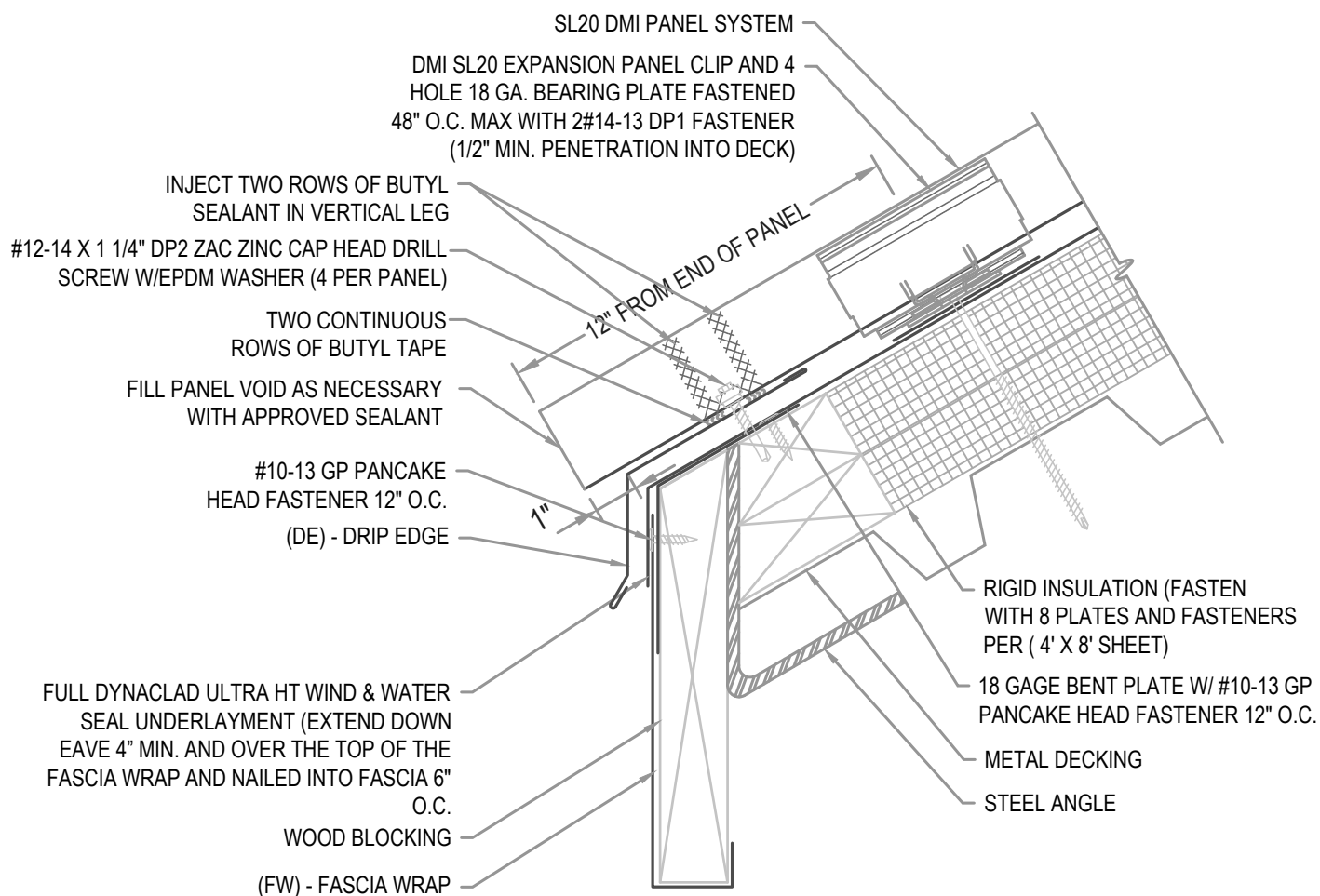
**3"=1'-0"**

### FLASHING LAP NOTE

LAP FLASHINGS 2" MIN W/ 1 ROW OF BUTYL SEALANT.

### FASTENER NOTE

ALL EXTERIOR FASTENERS ARE TO BE EITHER STAINLESS OR PLATED CARBON STEEL.



## HYDROSTATIC EAVE W/ FASCIA WRAP

• **PROVEN** • **DEPENDABLE** • **SUSTAINABLE** •  
**METAL ENVELOPE SYSTEMS SINCE 1988**

[WWW.DMIMETALS.COM](http://WWW.DMIMETALS.COM)

Detail:

**SL20 01-01-IH**

Issue/Rev Date:

**01/17**

Scale:

**3"=1'-0"**

### GUTTER LAP NOTE

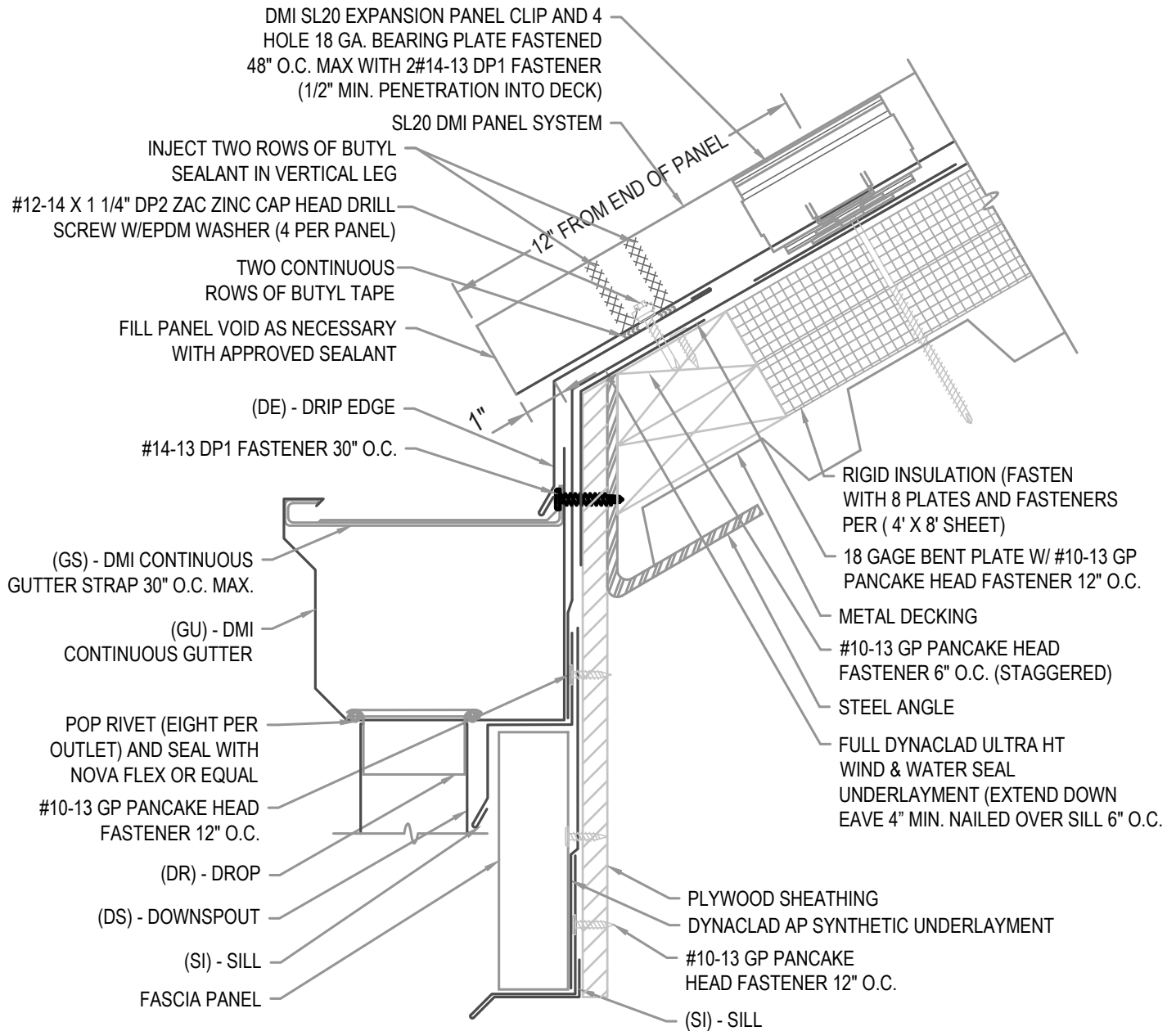
LAP GUTTER 3" MIN W/ 2 ROWS OF APPROVED SEALANT AND POP RIVET JOINT 2" O.C. SET IN AND CAP POP RIVETS IN APPROVED SEALANT.

### FLASHING LAP NOTE

LAP FLASHINGS 2" MIN W/ 1 ROW OF BUTYL SEALANT.

### FASTENER NOTE

ALL EXTERIOR FASTENERS ARE TO BE EITHER STAINLESS OR PLATED CARBON STEEL.



## HYDROSTATIC EAVE W/ GUTTER

• **PROVEN** • **DEPENDABLE** • **SUSTAINABLE** •  
**METAL ENVELOPE SYSTEMS SINCE 1988**

WWW.DMIMETALS.COM

Detail:

SL20 01-02-IH

Issue/Rev Date:

01/17

Scale:

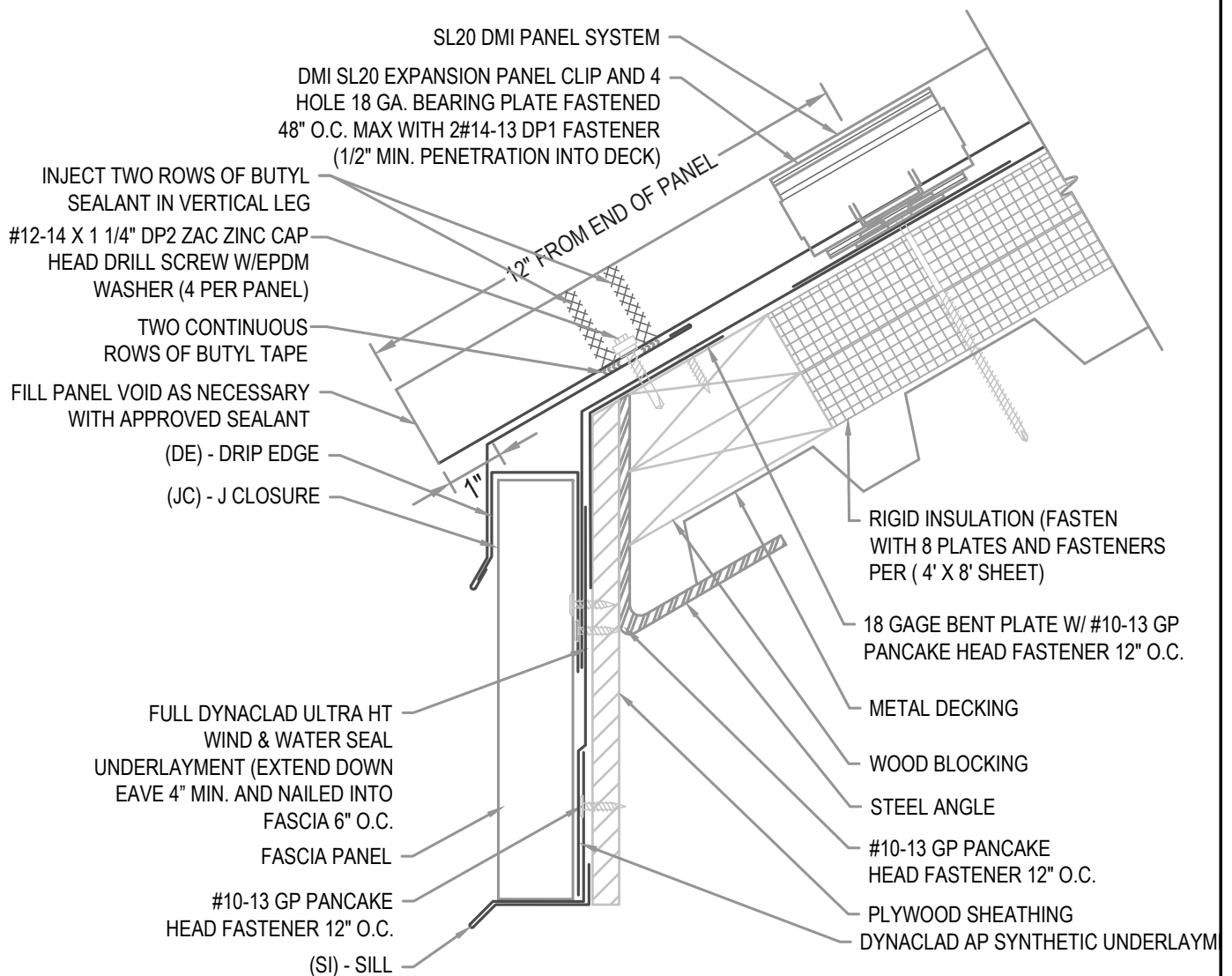
3"=1'-0"

### FLASHING LAP NOTE

LAP FLASHINGS 2" MIN W/ 1 ROW OF BUTYL SEALANT.

### FASTENER NOTE

ALL EXTERIOR FASTENERS ARE TO BE EITHER STAINLESS OR PLATED CARBON STEEL.



## HYDROSTATIC EAVE W/ FASCIA PANEL

• **PROVEN** • **DEPENDABLE** • **SUSTAINABLE** •  
**METAL ENVELOPE SYSTEMS SINCE 1988**

[WWW.DMIMETALS.COM](http://WWW.DMIMETALS.COM)

Detail:

**SL20 01-03-IH**

Issue/Rev Date:

**01/17**

Scale:

**3"=1'-0"**

### EXPANSION NOTE

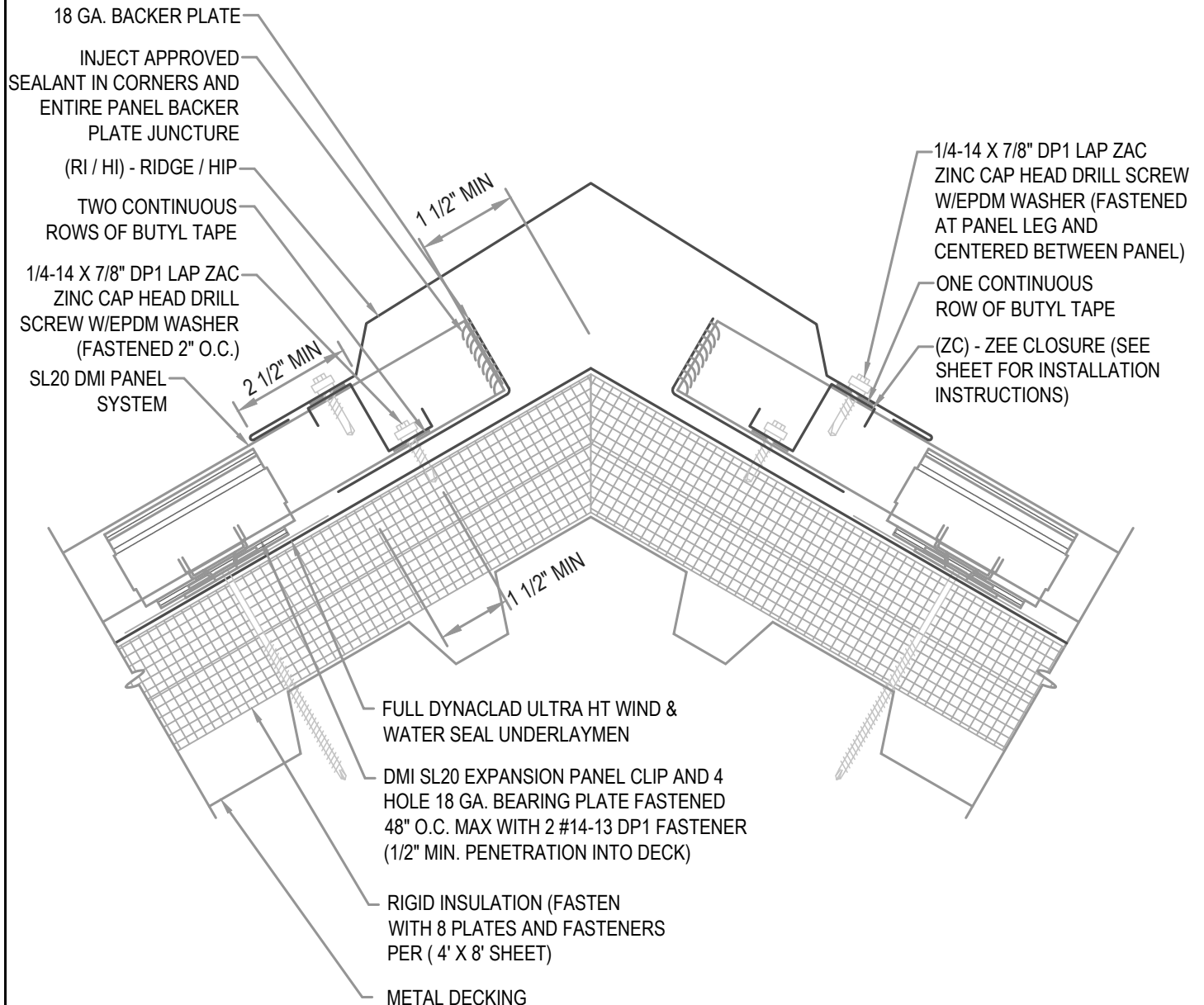
RIDGES EXCEEDING 100'-0" IN LENGTH REQUIRE THE USE OF A 6" COVER PLATE.

### FLASHING LAP NOTE

LAP RIDGE/HIP 4" MIN W/ 2 ROWS OF BUTYL SEALANT.  
DO NOT POP RIVET LAPPED FLASHINGS.

### FASTENER NOTE

ALL EXTERIOR FASTENERS ARE TO BE EITHER STAINLESS OR PLATED CARBON STEEL.



## HYDROSTATIC RIDGE / HIP

• **PROVEN** • **DEPENDABLE** • **SUSTAINABLE** •  
**METAL ENVELOPE SYSTEMS SINCE 1988**

WWW.DMIMETALS.COM

Detail:

**SL20 02-00-IH**

Issue/Rev Date:

**01/17**

Scale:

**3"=1'-0"**

## EXPANSION NOTE

RIDGES EXCEEDING 100'-0" IN LENGTH REQUIRE THE USE OF A 6" COVER PLATE.

## FLASHING LAP NOTE

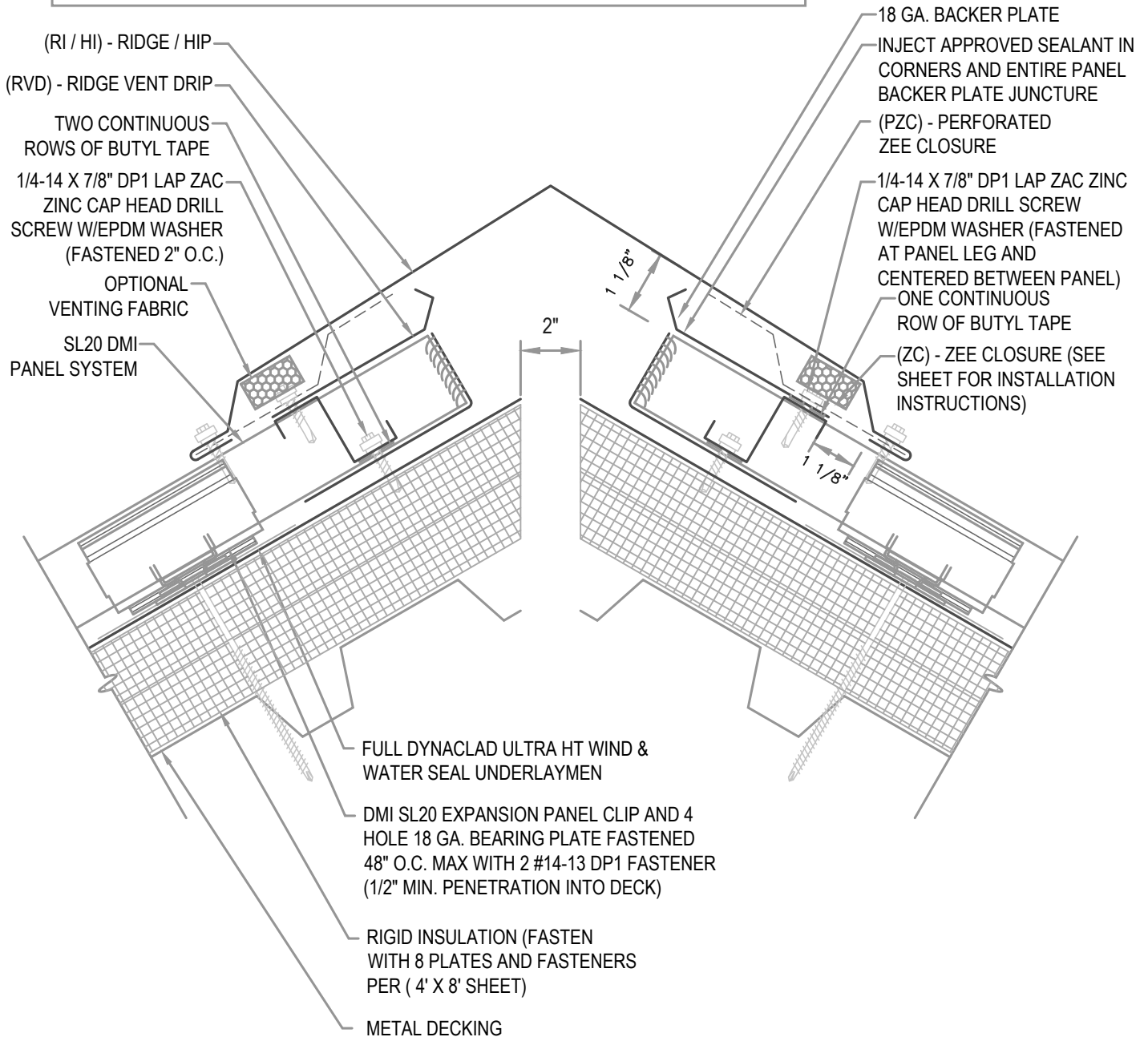
LAP RIDGE/HIP 4" MIN W/ 2 ROWS OF BUTYL SEALANT.  
DO NOT POP RIVET LAPPED FLASHINGS.

## FASTENER NOTE

ALL EXTERIOR FASTENERS ARE TO BE EITHER STAINLESS OR PLATED CARBON STEEL.

## VENTILATION NOTE

DMI PERFORATED Z CLOSURE PROVIDES 23% NET FREE AIR MOVEMENT.  
HIP CONDITIONS CAN NOT BE VENTED.



## HYDROSTATIC VENTED RIDGE/HIP

• **PROVEN** • **DEPENDABLE** • **SUSTAINABLE** •  
**METAL ENVELOPE SYSTEMS SINCE 1988**

[WWW.DMIMETALS.COM](http://WWW.DMIMETALS.COM)

Detail:

**SL20 02-01-IH**

Issue/Rev Date:

**01/17**

Scale:

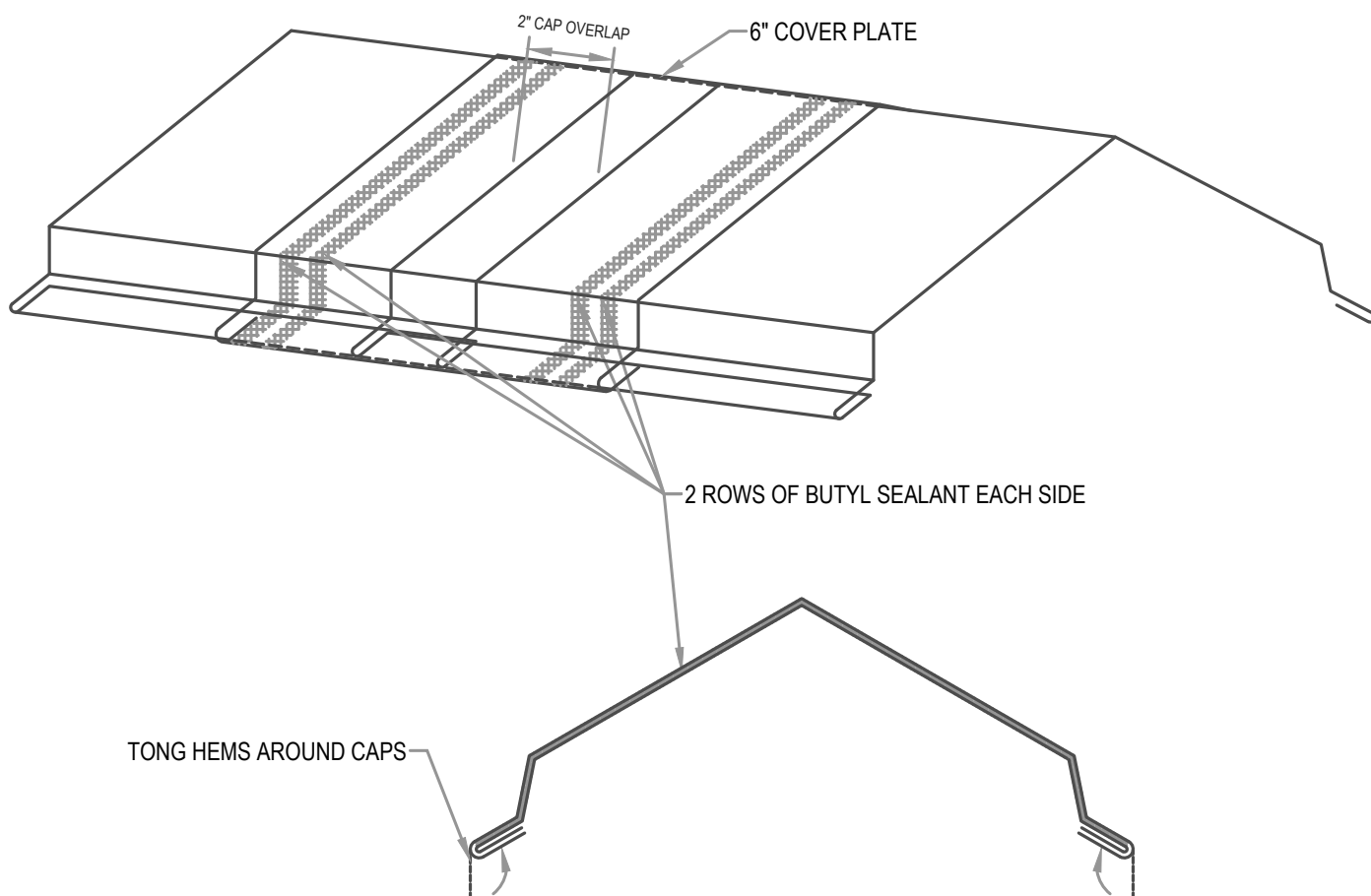
**3"=1'-0"**

### EXPANSION NOTE

RIDGES EXCEEDING 100'-0" IN LENGTH REQUIRE THE USE OF A 6" COVER PLATE.

### FLASHING LAP NOTE

LAP RIDGE/HIP 4" MIN W/ 2 ROWS OF BUTYL SEALANT.  
DO NOT POP RIVET LAPPED FLASHINGS.



## HYDROSTATIC RIDGE COVER PLATE

• **PROVEN** • **DEPENDABLE** • **SUSTAINABLE** •  
**METAL ENVELOPE SYSTEMS SINCE 1988**

[WWW.DMIMETALS.COM](http://WWW.DMIMETALS.COM)

Detail:

**SL20 02-02-IH**

Issue/Rev Date:

**01/17**

Scale:

**3"=1'-0"**

### INVERTED V NOTE

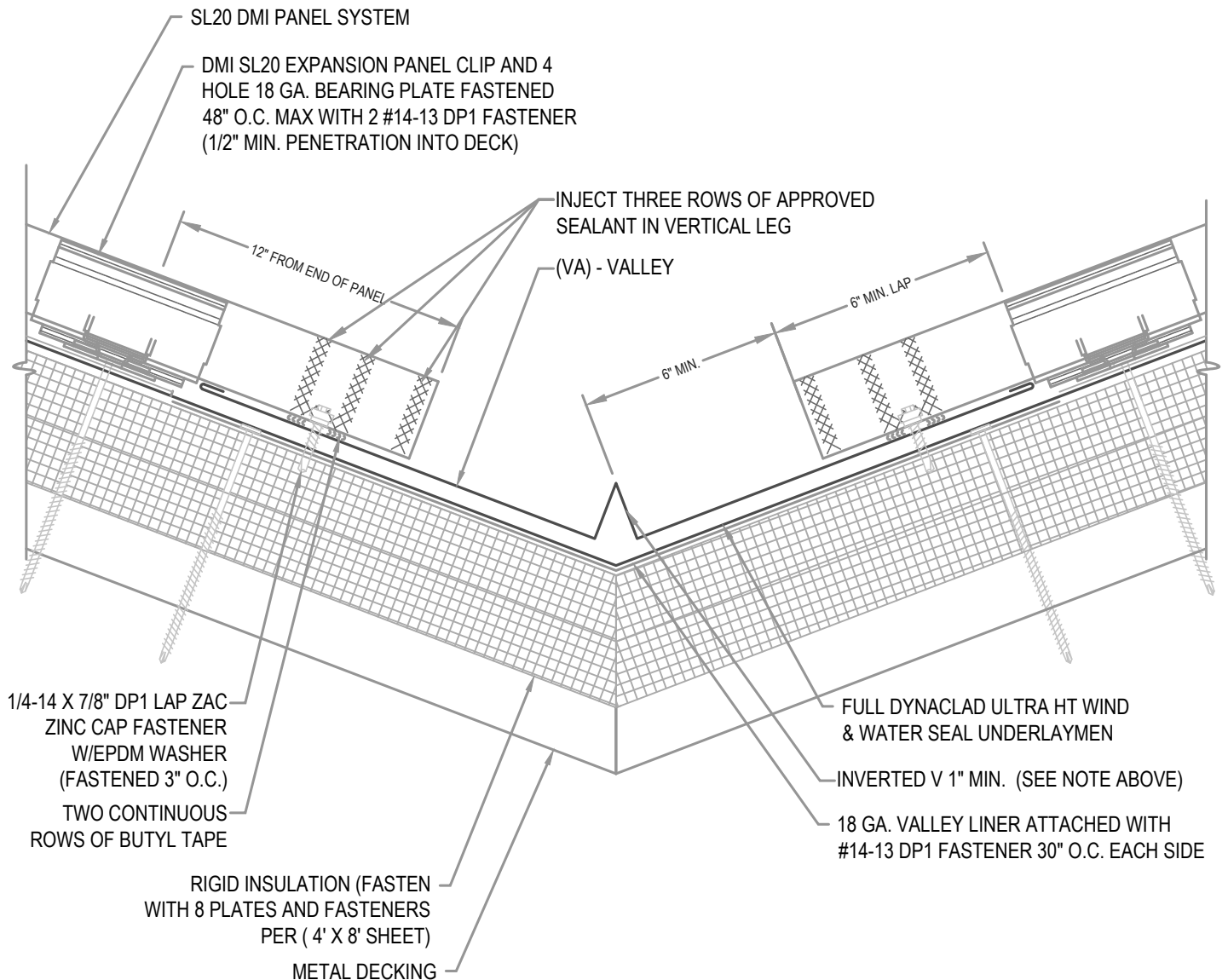
ON ROOF PITCHES OVER 6:12 OR PANEL LENGTHS EXCEEDING 60' OR ON DISSIMILAR PITCHES INCREASE THE INVERTED V IN THE VALLEY TO 2".

### FLASHING LAP NOTE

LAP VALLEY 8" MIN. WITH 2 ROWS OF APPROVED SEALANT.

### FASTENER NOTE

ALL EXTERIOR FASTENERS ARE TO BE EITHER STAINLESS OR PLATED CARBON STEEL.



## HYDROSTATIC VALLEY

• **PROVEN** • **DEPENDABLE** • **SUSTAINABLE** •  
**METAL ENVELOPE SYSTEMS SINCE 1988**

[WWW.DMIMETALS.COM](http://WWW.DMIMETALS.COM)

Detail:

**SL20 03-00-IH**

Issue/Rev Date:

**01/17**

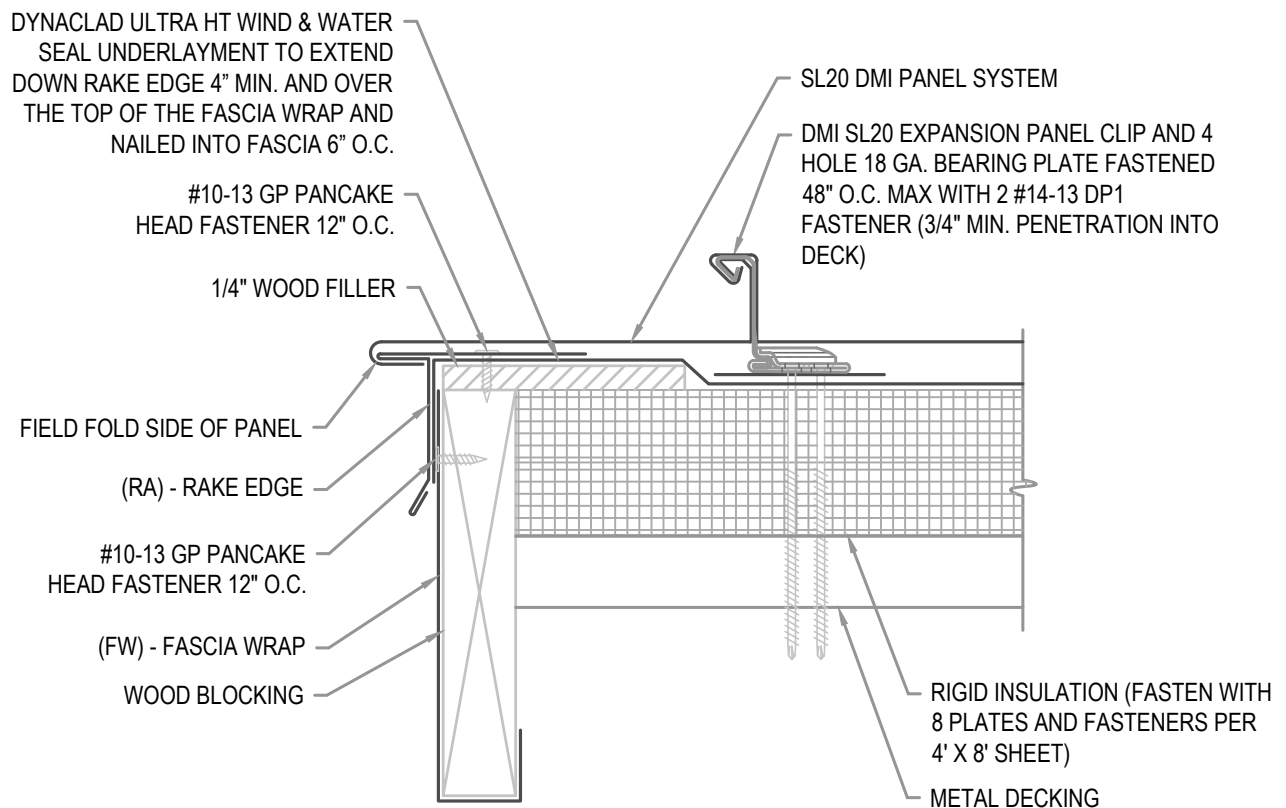
Scale:

**3"=1'-0"**



### FLASHING LAP NOTE

LAP RAKE EDGE AND FASCIA 2" MINIMUM WITH 1 ROW OF BUTYL SEALANT.



## HYDROSTATIC RAKE EDGE

• **PROVEN** • **DEPENDABLE** • **SUSTAINABLE** •  
**METAL ENVELOPE SYSTEMS SINCE 1988**

[WWW.DMIMETALS.COM](http://WWW.DMIMETALS.COM)

Detail:

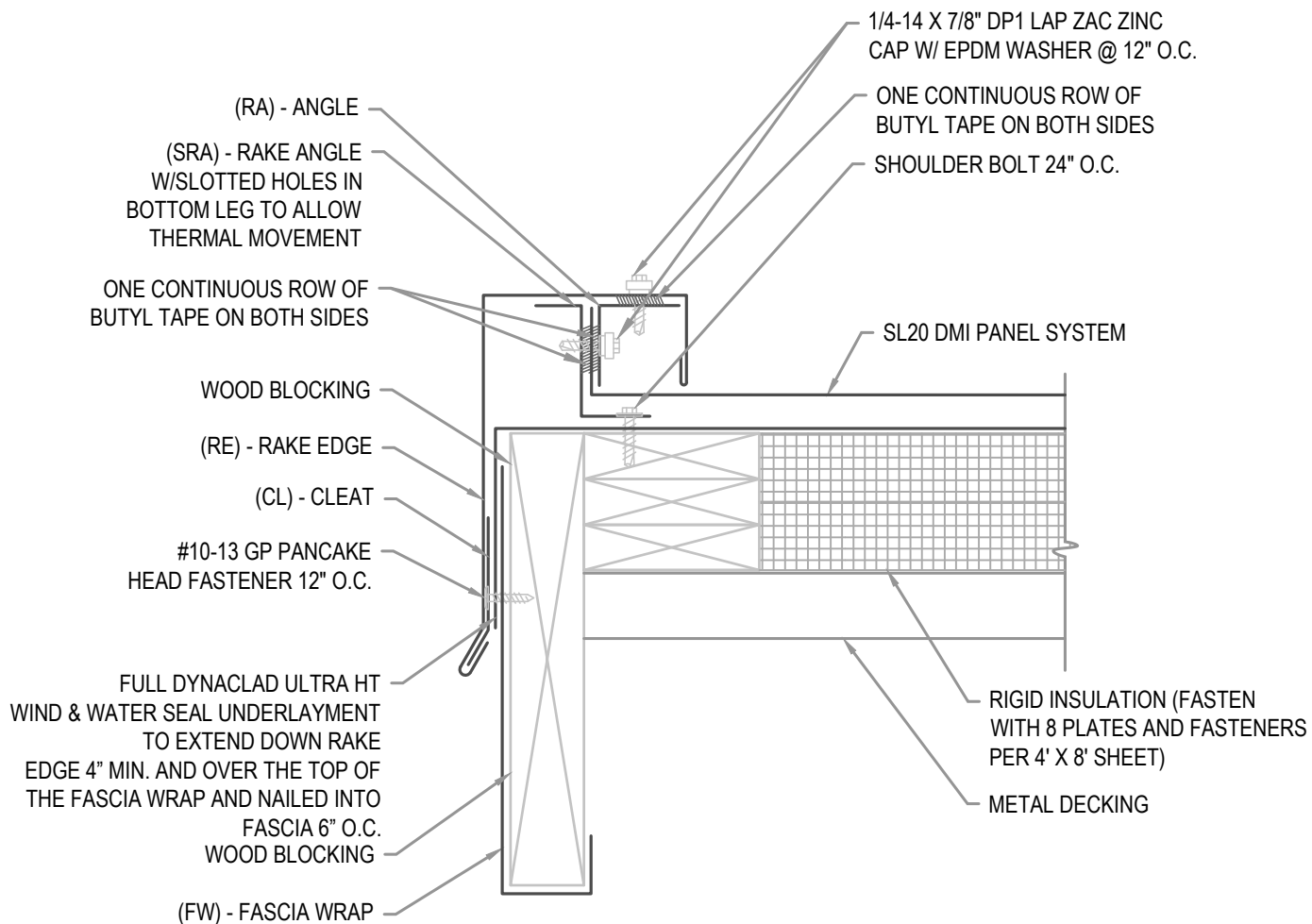
**SL20 04-00-IH**

Issue/Rev Date:

**01/17**

Scale:

**3"=1'-0"**



## HYDROSTATIC RAKE EDGE

• **PROVEN** • **DEPENDABLE** • **SUSTAINABLE** •  
**METAL ENVELOPE SYSTEMS SINCE 1988**

WWW.DMIMETALS.COM

Detail:

**SL20 04-01-IH**

Issue/Rev Date:

**01/17**

Scale:

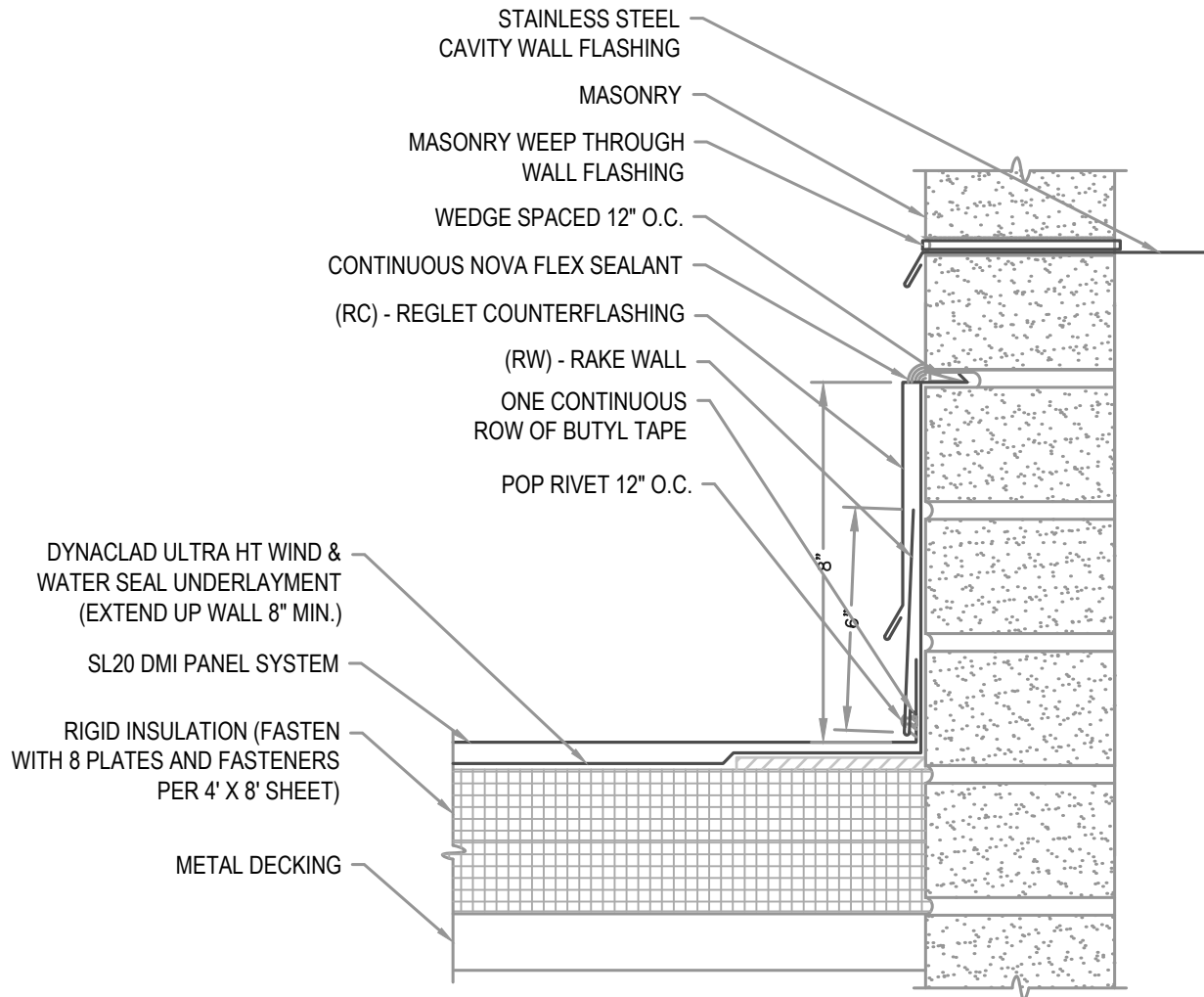
**3"=1'-0"**

**NOTE**

REGLET FLASHING TO BE INSTALLED BELOW ALL WEEP HOLES.  
SURFACED MOUNT COUNTERFLASHINGS NOT ACCEPTABLE.

**FLASHING LAP NOTE**

LAP RAKE WALL REGLET 2" MINIMUM WITH 2 ROWS OF BUTYL SEALANT.

**HYDROSTATIC RAKE WALL**

• **PROVEN** • **DEPENDABLE** • **SUSTAINABLE** •  
**METAL ENVELOPE SYSTEMS SINCE 1988**

[WWW.DMIMETALS.COM](http://WWW.DMIMETALS.COM)

Detail:

**SL20 05-00-IH**

Issue/Rev Date:

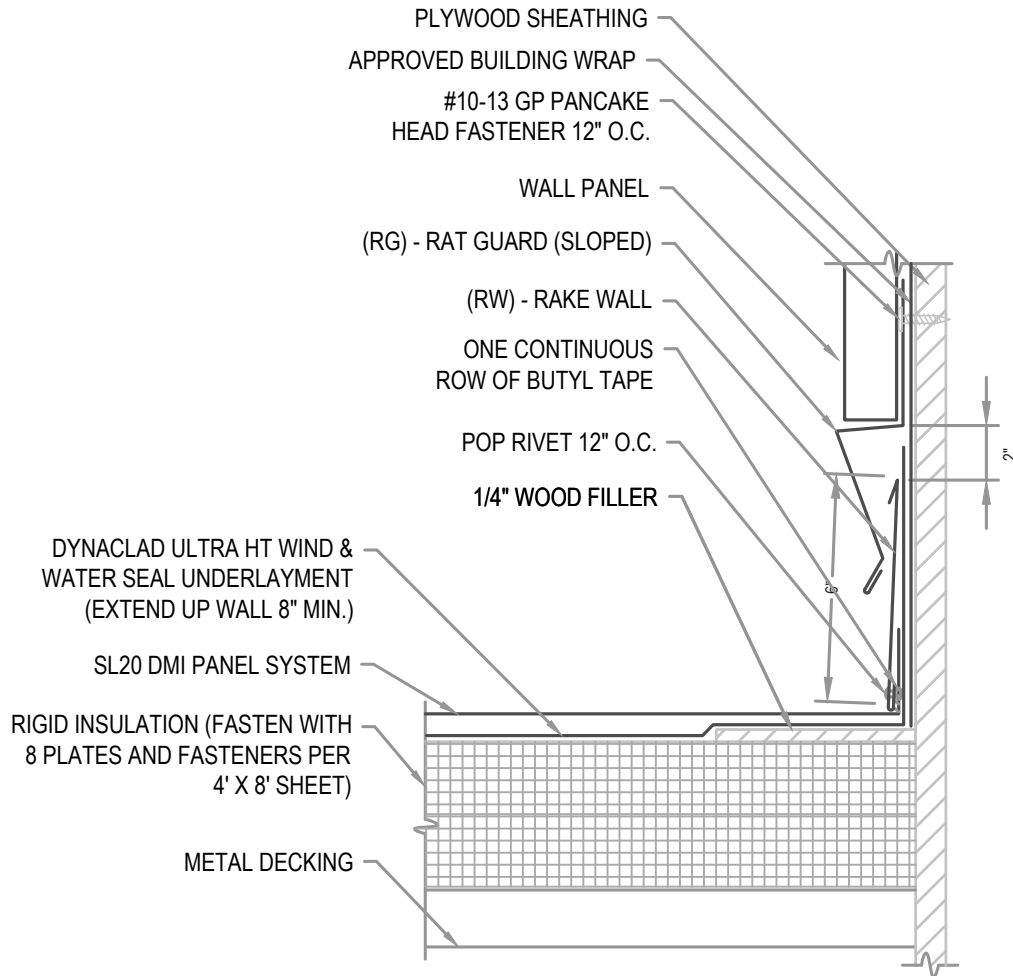
**01/17**

Scale:

**3"=1'-0"**

### FLASHING LAP NOTE

LAP RAKE WALL AND RAT GUARD (SLOPED) 2" MINIMUM WITH 2 ROWS OF BUTYL SEALANT.



## HYDROSTATIC RAKE WALL

• **PROVEN** • **DEPENDABLE** • **SUSTAINABLE** •  
**METAL ENVELOPE SYSTEMS SINCE 1988**

[WWW.DMIMETALS.COM](http://WWW.DMIMETALS.COM)

Detail:

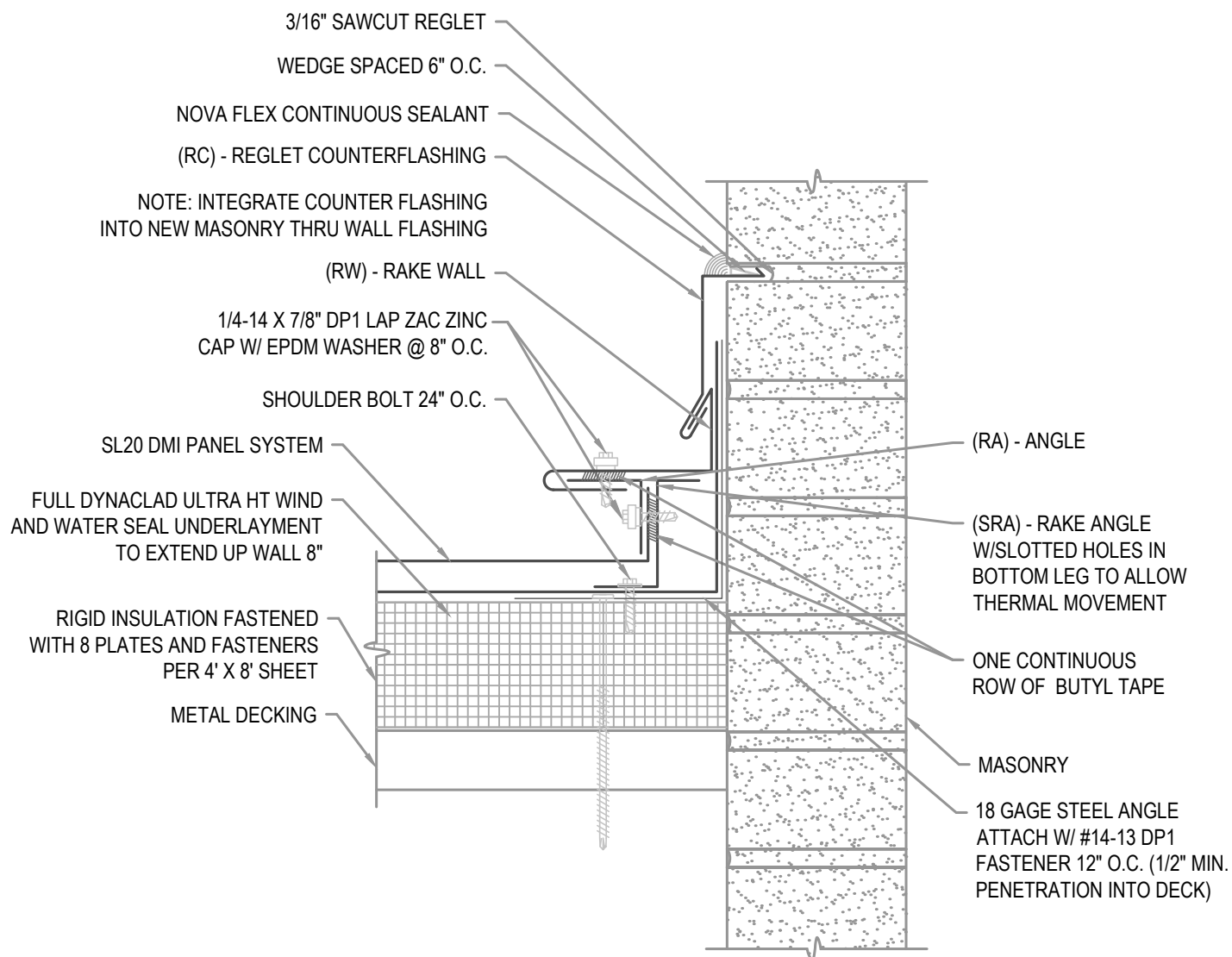
**SL20 05-01-IH**

Issue/Rev Date:

**01/17**

Scale:

**3"=1'-0"**



## HYDROSTATIC RAKE WALL

• **PROVEN** • **DEPENDABLE** • **SUSTAINABLE** •  
**METAL ENVELOPE SYSTEMS SINCE 1988**

[WWW.DMIMETALS.COM](http://WWW.DMIMETALS.COM)

Detail:

**SL20 05-02-IH**

Issue/Rev Date:

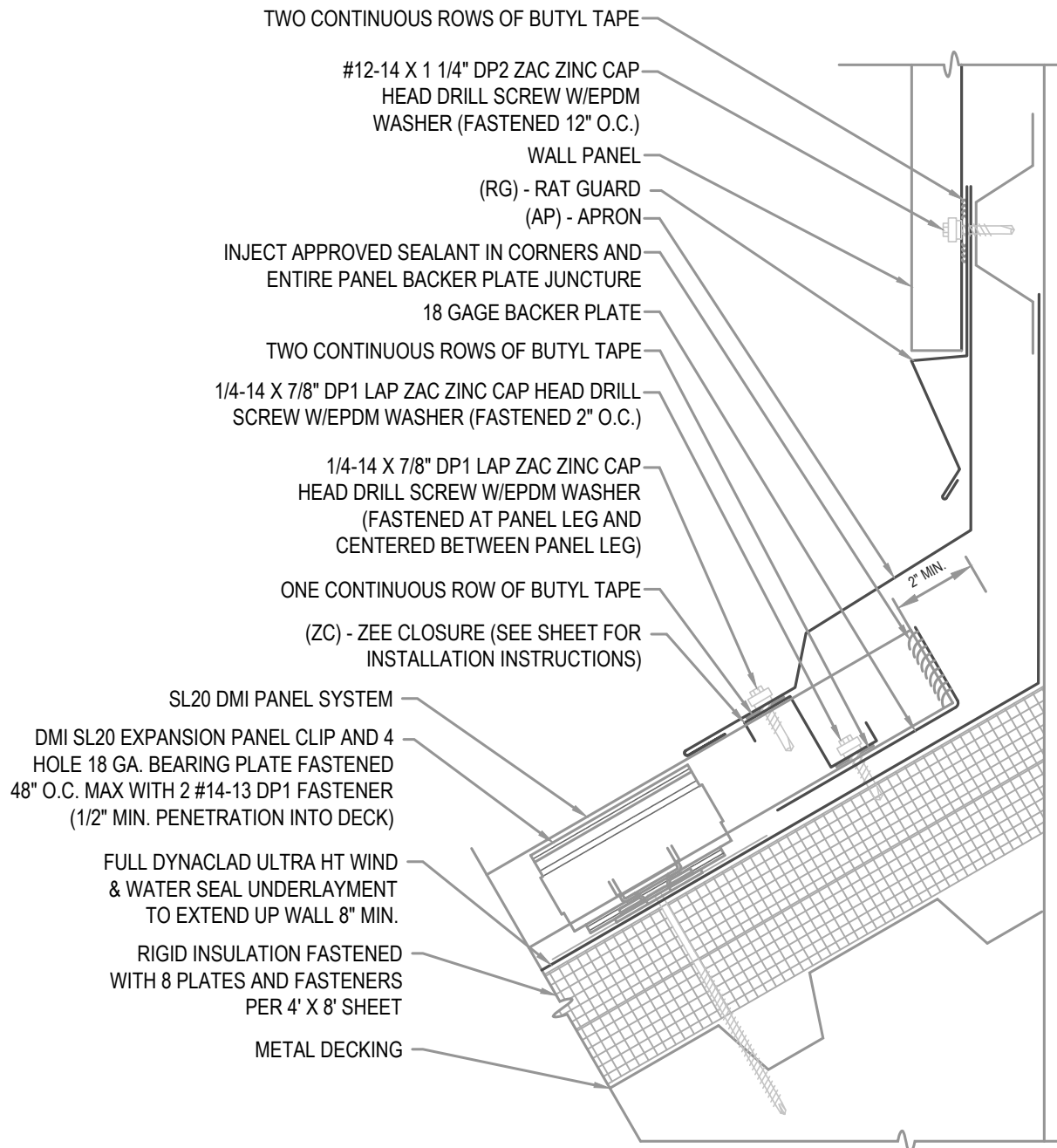
**01/17**

Scale:

**3"=1'-0"**

LAP APRON 2" MINIMUM WITH 2 ROWS OF BUTYL SEALANT.

ALL EXTERIOR FASTENERS ARE TO BE EITHER STAINLESS OR PLATED CARBON STEEL.



## HYDROSTATIC APRON W/ WALL PANEL

**● PROVEN ● DEPENDABLE ● SUSTAINABLE ●**  
**METAL ENVELOPE SYSTEMS SINCE 1988**

**WWW.DMIMETALS.COM**

**Detail:**

SL20 06-00-IH

Issue/Rev Date:

01/17

Scale:

$$3'' = 1' - 0''$$

## NOTE

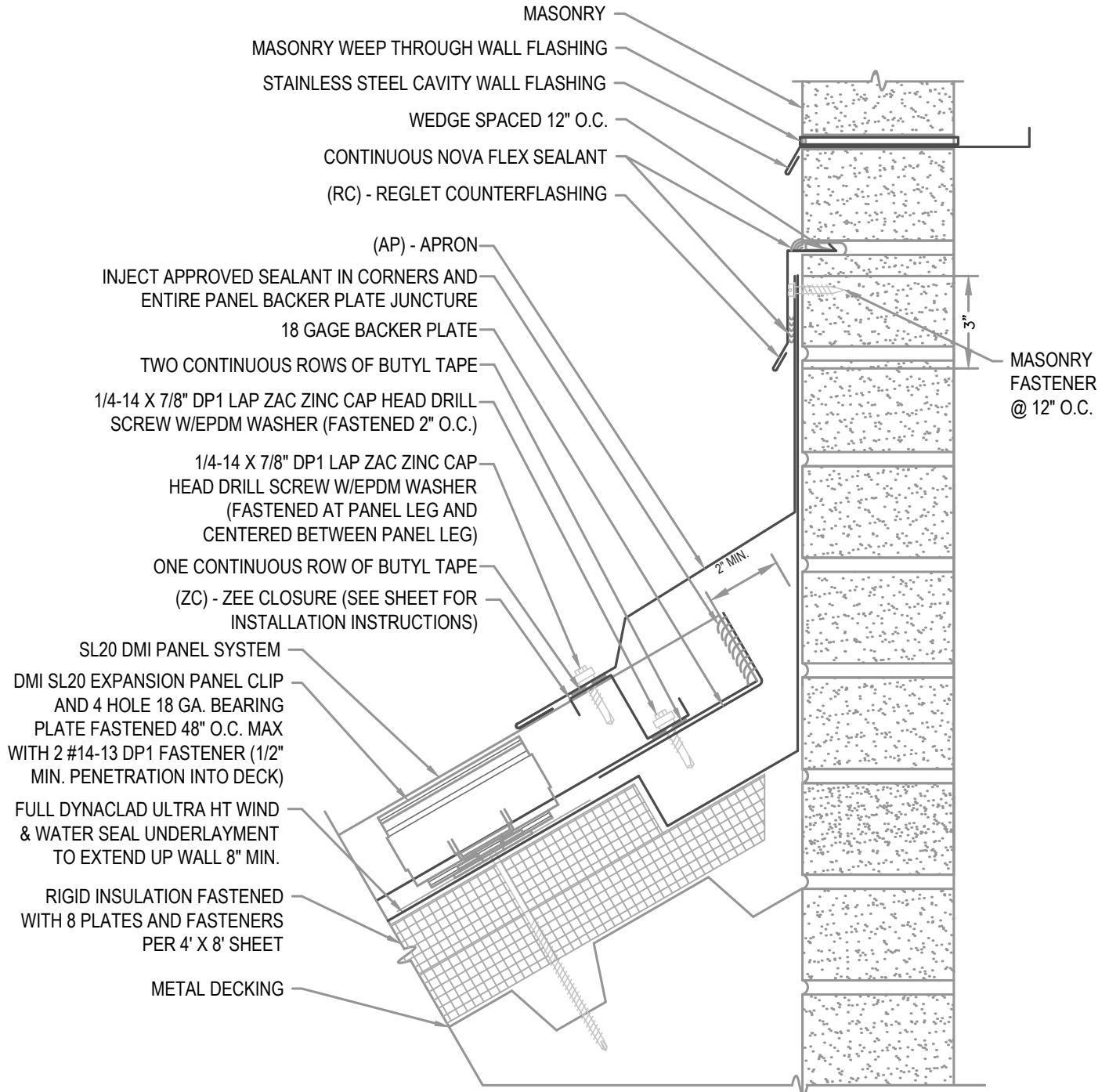
REGLET FLASHING TO BE INSTALLED BELOW ALL WEEP HOLES.  
SURFACED MOUNT COUNTERFLASHINGS NOT ACCEPTABLE.

## FLASHING LAP NOTE

LAP APRON AND REGLET 2" MINIMUM WITH 2 ROWS OF BUTYL SEALANT.

## FASTENER NOTE

ALL EXTERIOR FASTENERS ARE TO BE EITHER STAINLESS OR PLATED CARBON STEEL.



## HYDROSTATIC APRON

• **PROVEN** • **DEPENDABLE** • **SUSTAINABLE** •  
**METAL ENVELOPE SYSTEMS SINCE 1988**

[WWW.DMIMETALS.COM](http://WWW.DMIMETALS.COM)

Detail:

**SL20 06-01-IH**

Issue/Rev Date:

**01/17**

Scale:

**3"=1'-0"**

### EXPANSION NOTE

RIDGES EXCEEDING 100'-0" IN LENGTH REQUIRE THE USE OF A 6" COVER PLATE.

### FLASHING LAP NOTE

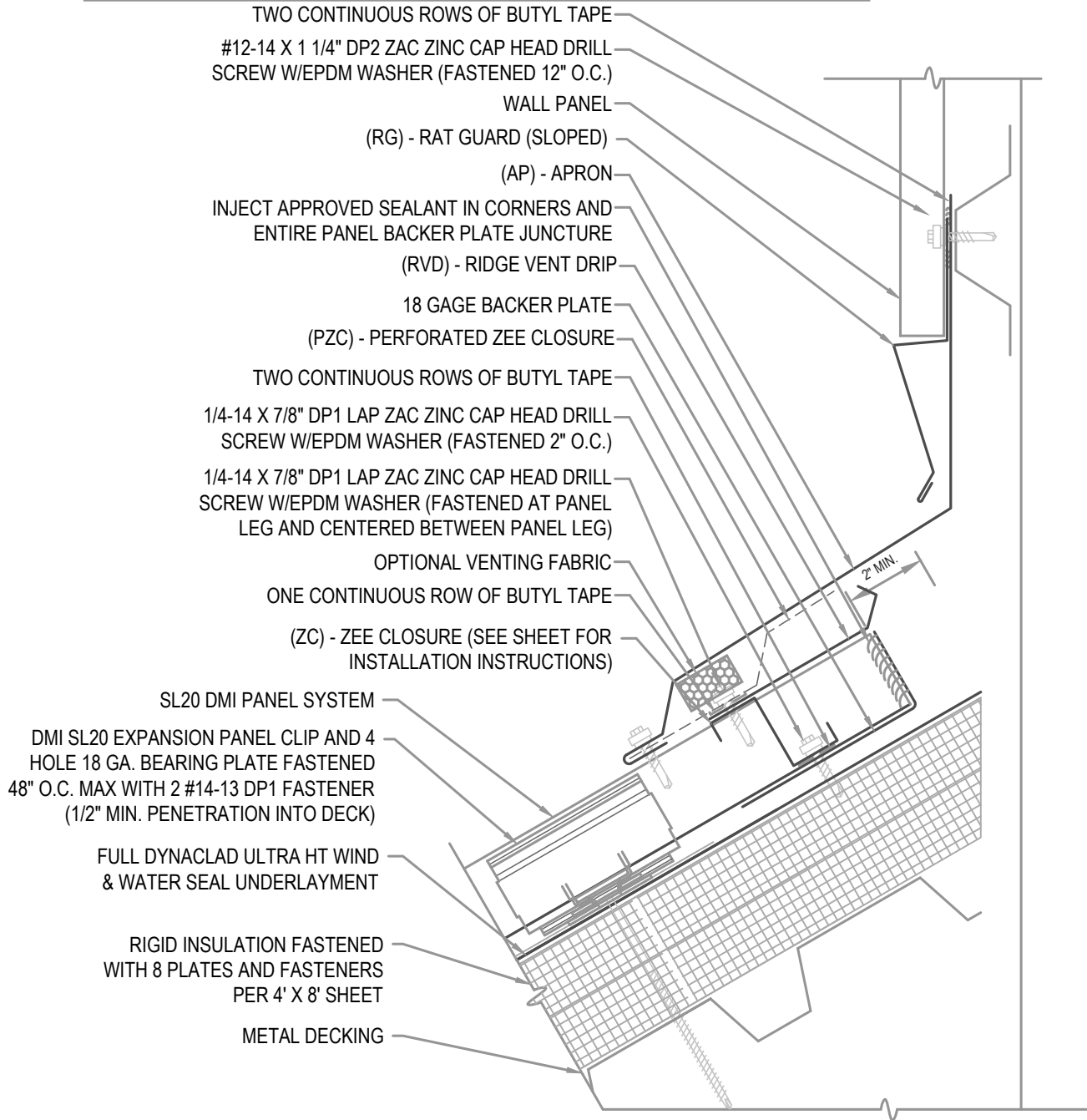
LAP APRON 2" MIN W/ 2 ROWS OF BUTYL SEALANT.  
DO NOT POP RIVET LAPPED FLASHINGS.

### FASTENER NOTE

ALL EXTERIOR FASTENERS ARE TO BE EITHER STAINLESS OR PLATED CARBON STEEL.

### VENTILATION NOTE

DMI PERFORATED Z CLOSURE PROVIDES 23% NET FREE AIR MOVEMENT.  
HIP CONDITIONS CAN NOT BE VENTED.



## HYDROSTATIC VENTED APRON

• **PROVEN** • **DEPENDABLE** • **SUSTAINABLE** •  
**METAL ENVELOPE SYSTEMS SINCE 1988**

WWW.DMIMETALS.COM

Detail:

SL20 06-02-IH

Issue/Rev Date:

01/17

Scale:

3"=1'-0"



## NOTE

REGLET FLASHING TO BE INSTALLED BELOW ALL WEEP HOLES.  
SURFACED MOUNT COUNTERFLASHINGS NOT ACCEPTABLE.

## FLASHING LAP NOTE

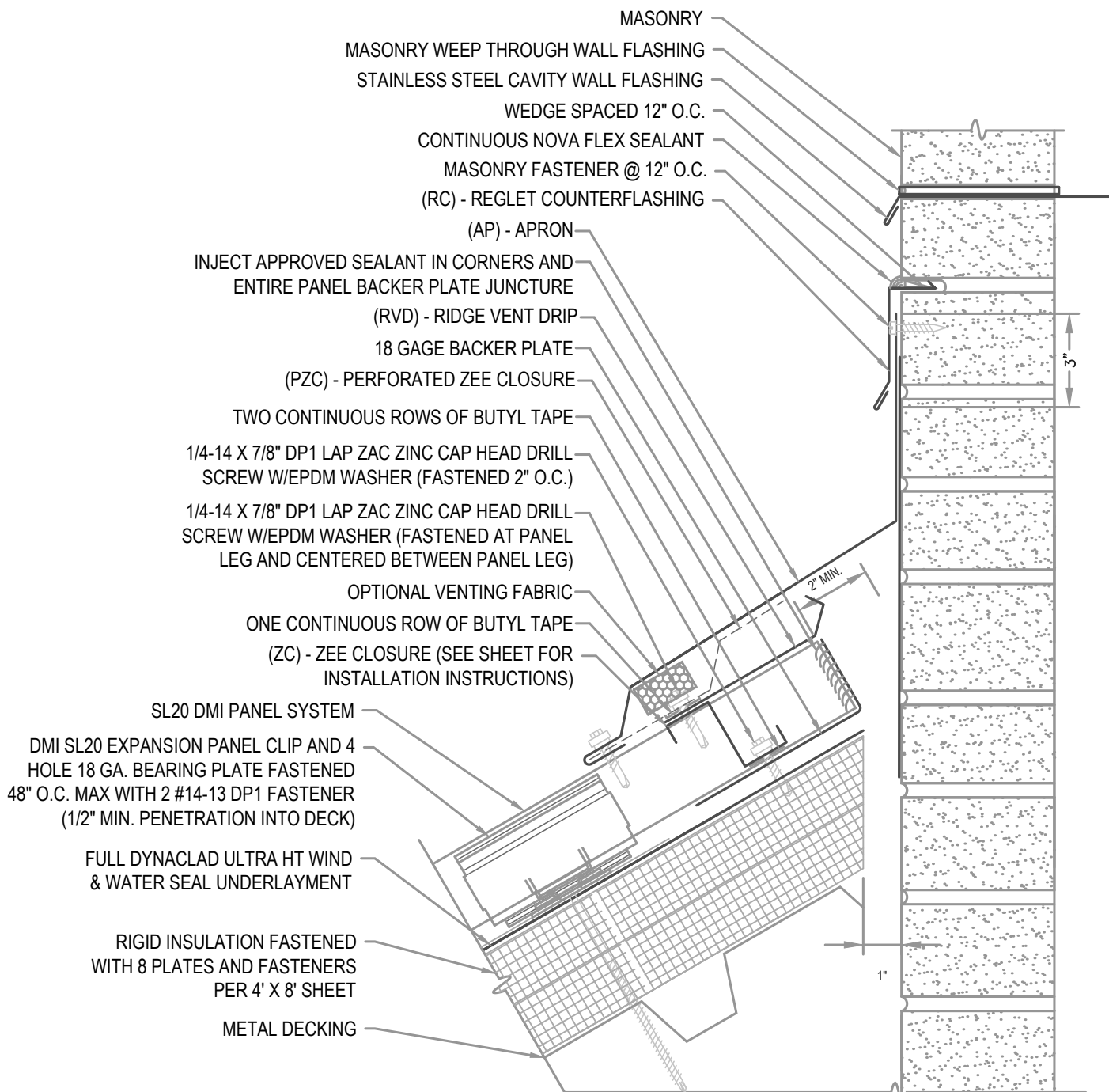
LAP APRON AND REGLET 2" MINIMUM WITH 2 ROWS OF BUTYL SEALANT.

## FASTENER NOTE

ALL EXTERIOR FASTENERS ARE TO BE EITHER STAINLESS OR PLATED CARBON STEEL.

## VENTILATION NOTE

DMI PERFORATED Z CLOSURE PROVIDES 23% NET FREE AIR MOVEMENT.  
HIP CONDITIONS CAN NOT BE VENTED.



## HYDROSTATIC VENTED APRON

• **PROVEN** • **DEPENDABLE** • **SUSTAINABLE** •  
**METAL ENVELOPE SYSTEMS SINCE 1988**

[WWW.DMIMETALS.COM](http://WWW.DMIMETALS.COM)

Detail:

**SL20 06-03-IH**

Issue/Rev Date:

**01/17**

Scale:

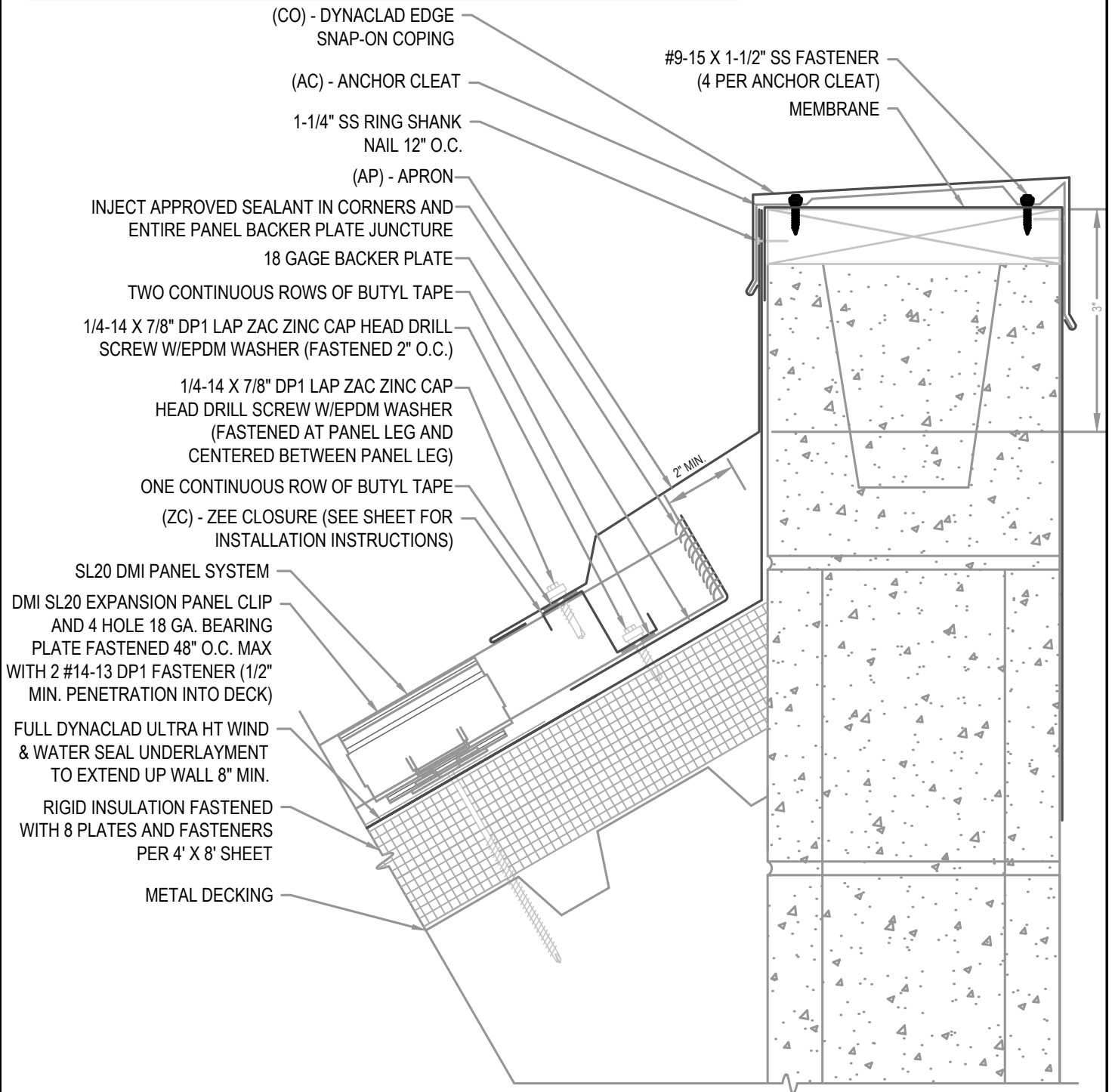
**3"=1'-0"**

## FLASHING LAP NOTE

LAP APRON, COPING AND CLEATS 2" MINIMUM WITH 2 ROWS OF BUTYL SEALANT.

## FASTENER NOTE

ALL EXTERIOR FASTENERS ARE TO BE EITHER STAINLESS OR PLATED CARBON STEEL.



## HYDROSTATIC APRON W/ COPING

• **PROVEN** • **DEPENDABLE** • **SUSTAINABLE** •  
**METAL ENVELOPE SYSTEMS SINCE 1988**

WWW.DMIMETALS.COM

Detail:

SL20 06-04-IH

Issue/Rev Date:

01/17

Scale:

3"=1'-0"

## EXPANSION NOTE

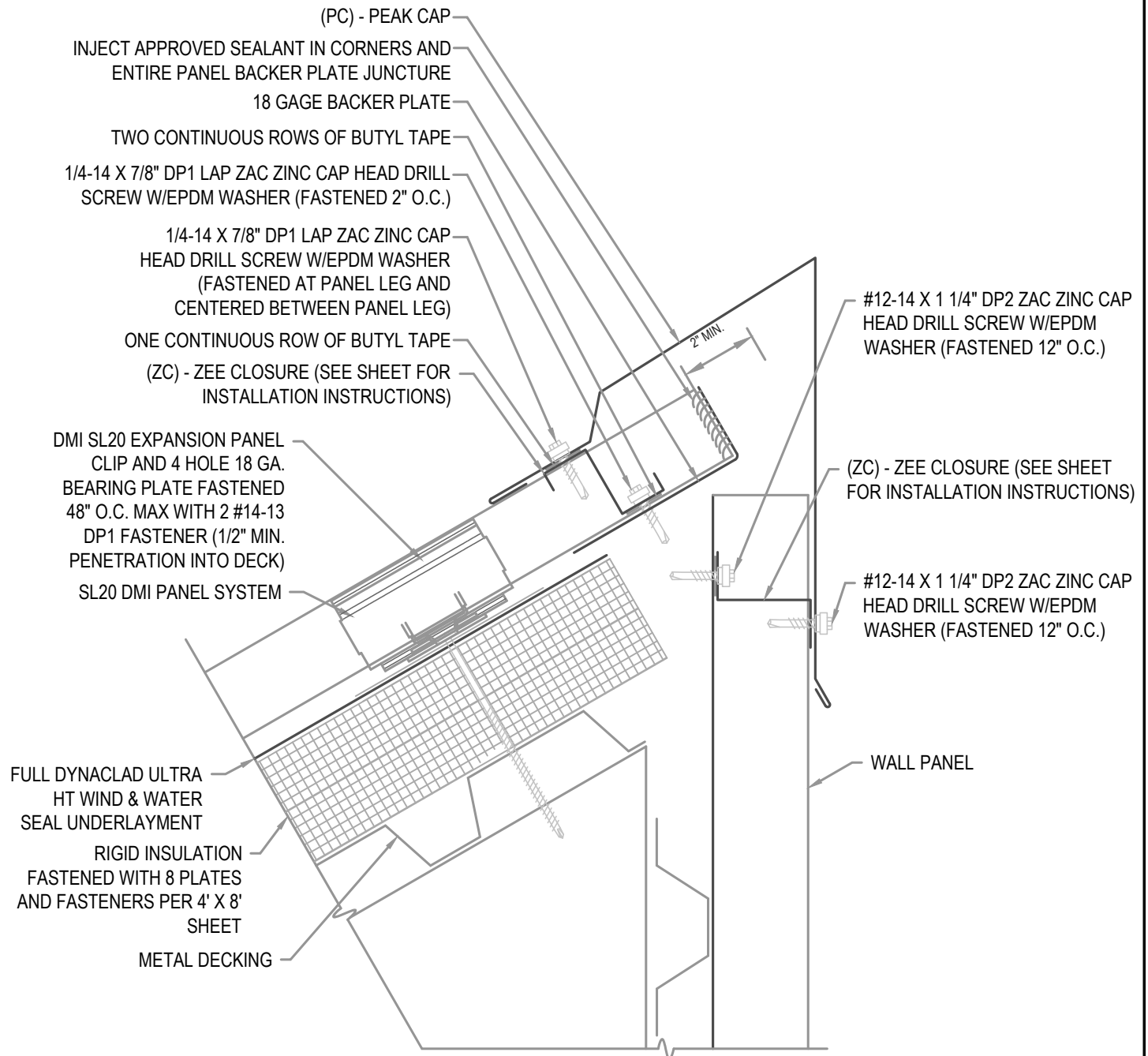
PEAKS EXCEEDING 100'-0" IN LENGTH REQUIRE THE USE OF A 6" COVER PLATE.

## FLASHING LAP NOTE

LAP PEAK CAPS 4" MIN W/ 2 ROWS OF BUTYL SEALANT.  
DO NOT POP RIVET LAPPED FLASHINGS.

## FASTENER NOTE

ALL EXTERIOR FASTENERS ARE TO BE EITHER STAINLESS OR PLATED CARBON STEEL.



## HYDROSTATIC PEAK

• **PROVEN** • **DEPENDABLE** • **SUSTAINABLE** •  
**METAL ENVELOPE SYSTEMS SINCE 1988**

WWW.DMIMETALS.COM

Detail:

SL20 07-00-IH

Issue/Rev Date:

01/17

Scale:

3"=1'-0"

## EXPANSION NOTE

PEAKS EXCEEDING 100'-0" IN LENGTH REQUIRE THE USE OF A 6" COVER PLATE.

## FLASHING LAP NOTE

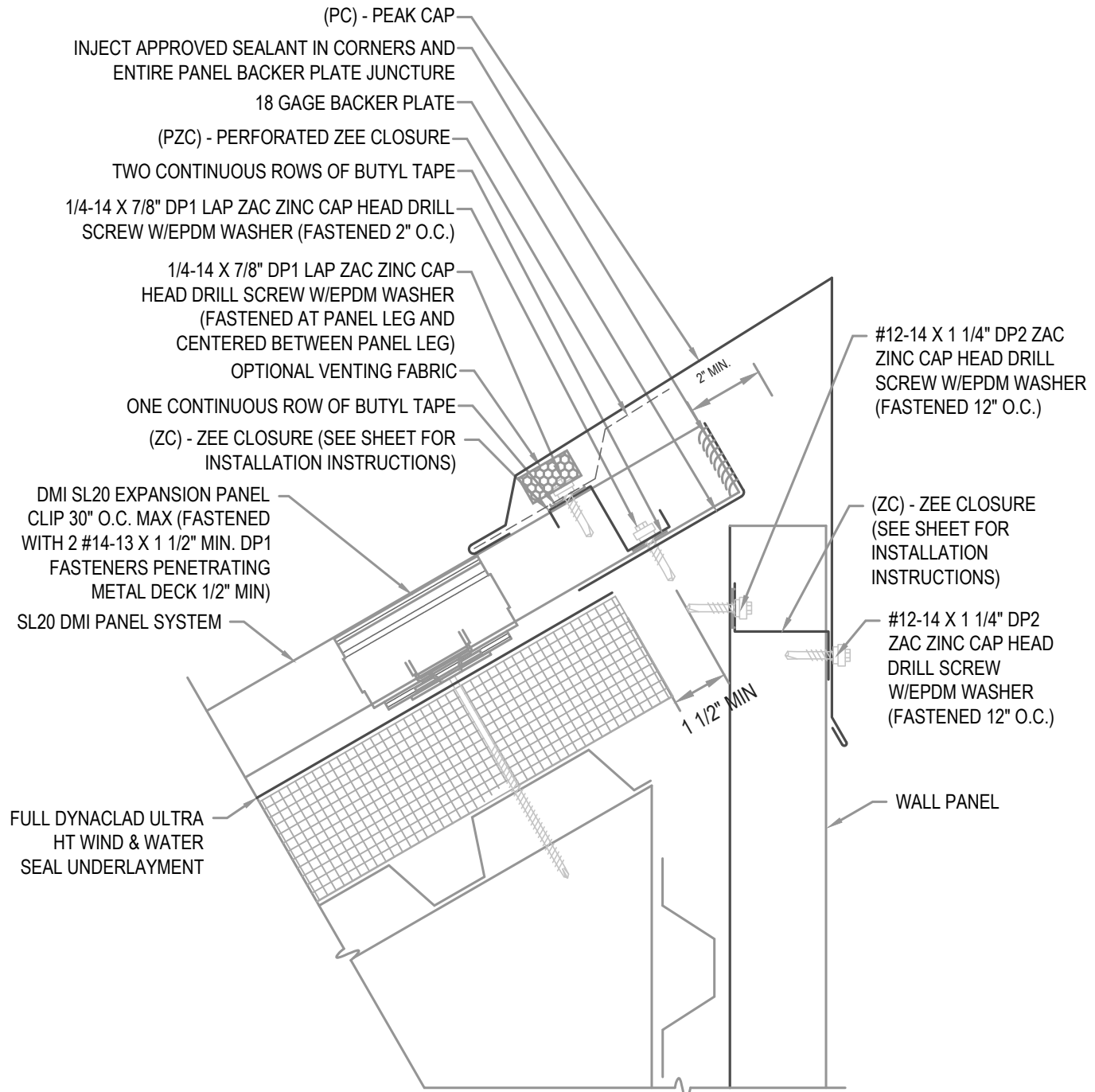
LAP PEAK CAPS 4" MIN W/ 2 ROWS OF BUTYL SEALANT.  
DO NOT POP RIVET LAPPED FLASHINGS.

## FASTENER NOTE

ALL EXTERIOR FASTENERS ARE TO BE EITHER STAINLESS OR PLATED CARBON STEEL.

## VENTILATION NOTE

DMI PERFORATED Z CLOSURE PROVIDES 23% NET FREE AIR MOVEMENT.  
HIP CONDITIONS CAN NOT BE VENTED.



## HYDROSTATIC VENTED PEAK

• **PROVEN** • **DEPENDABLE** • **SUSTAINABLE** •  
**METAL ENVELOPE SYSTEMS SINCE 1988**

[WWW.DMIMETALS.COM](http://WWW.DMIMETALS.COM)

Detail:

**SL20 07-01-IH**

Issue/Rev Date:

**01/17**

Scale:

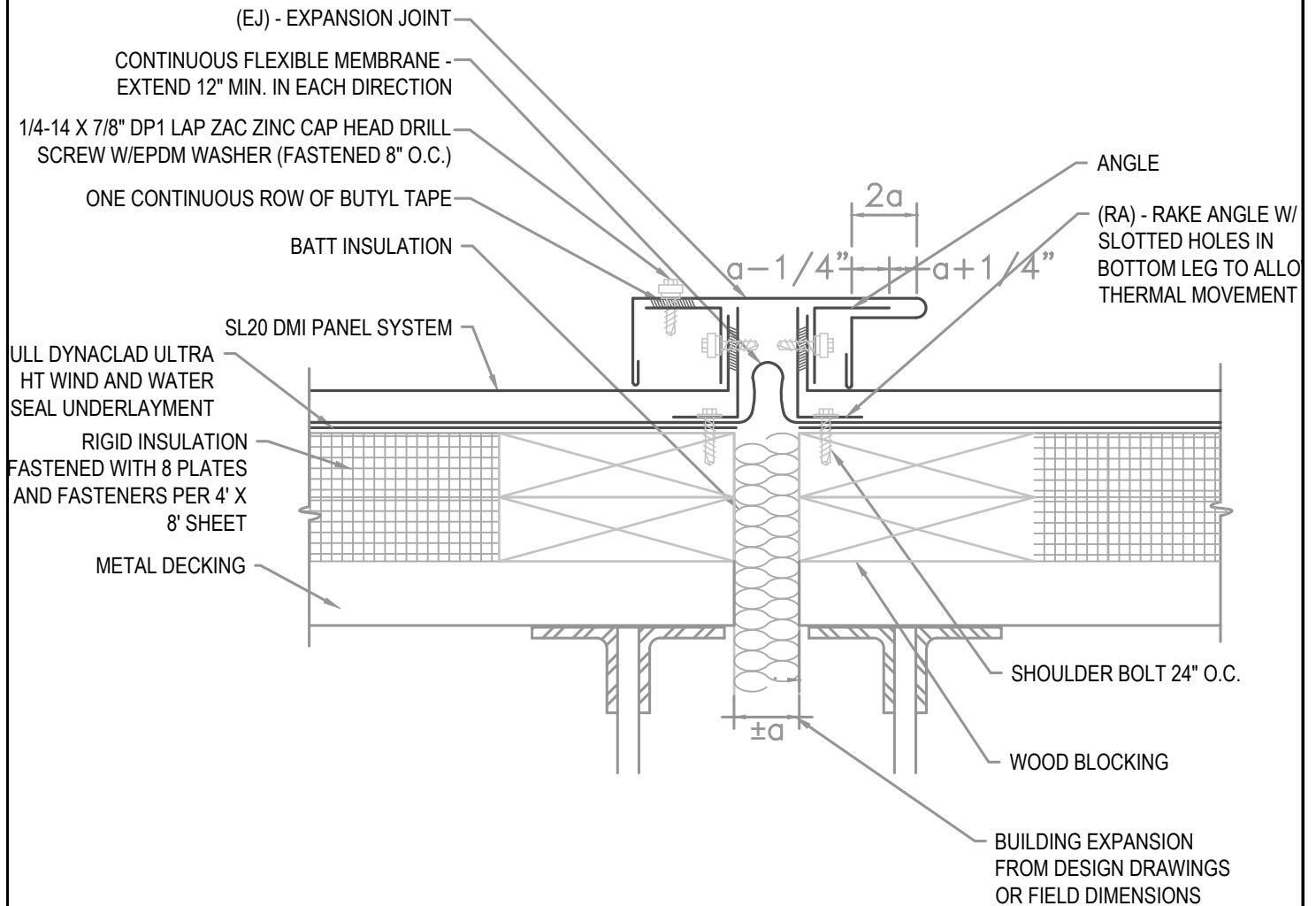
**3"=1'-0"**

## FLASHING LAP NOTE

LAP EXPANSION JOINT AND J CLOSURE 2" MINIMUM WITH 2 ROWS OF BUTYL SEALANT.

## FASTENER NOTE

ALL EXTERIOR FASTENERS ARE TO BE EITHER STAINLESS OR PLATED CARBON STEEL.



## HYDROSTATIC EXPANSION JOINT

• **PROVEN** • **DEPENDABLE** • **SUSTAINABLE** •

**METAL ENVELOPE SYSTEMS SINCE 1988**

[WWW.DMIMETALS.COM](http://WWW.DMIMETALS.COM)

Detail:

**SL20 08-00-IH**

Issue/Rev Date:

**01/17**

Scale:

**3"=1'-0"**

## NOTE

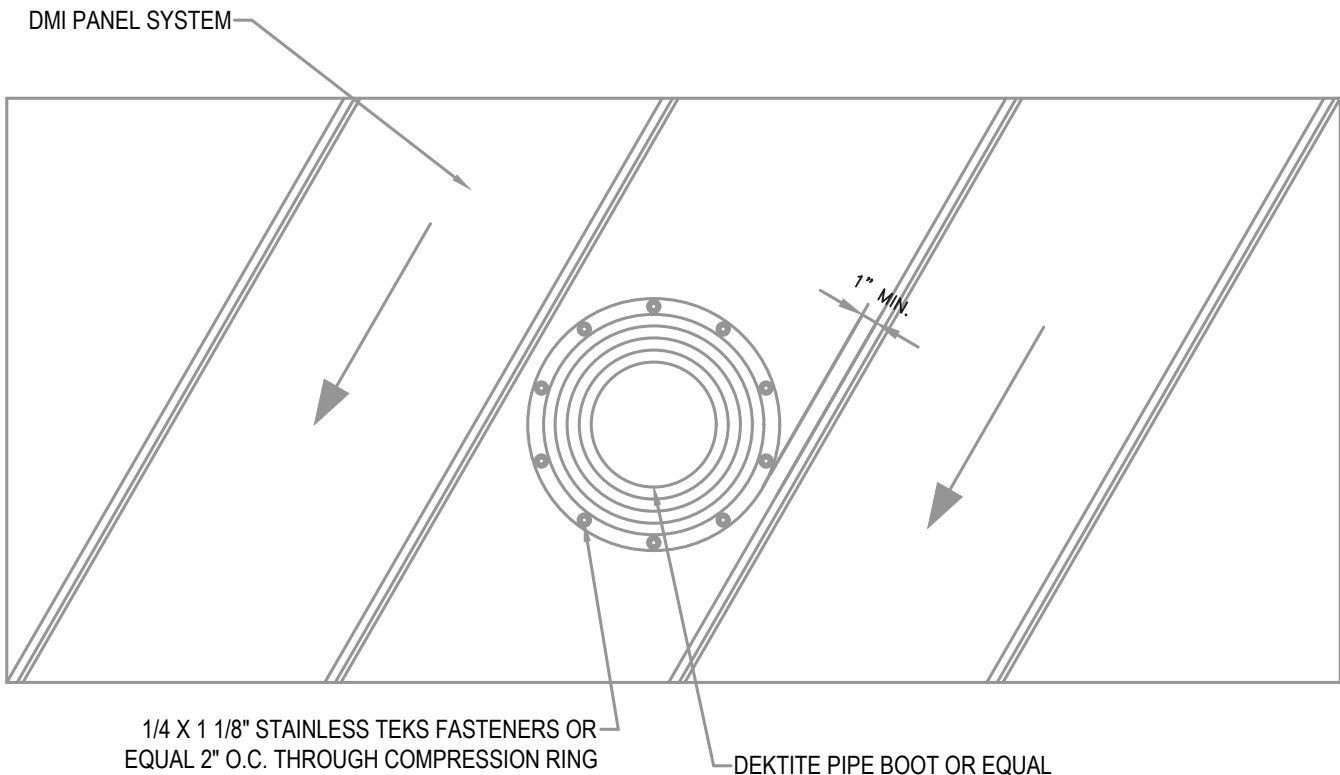
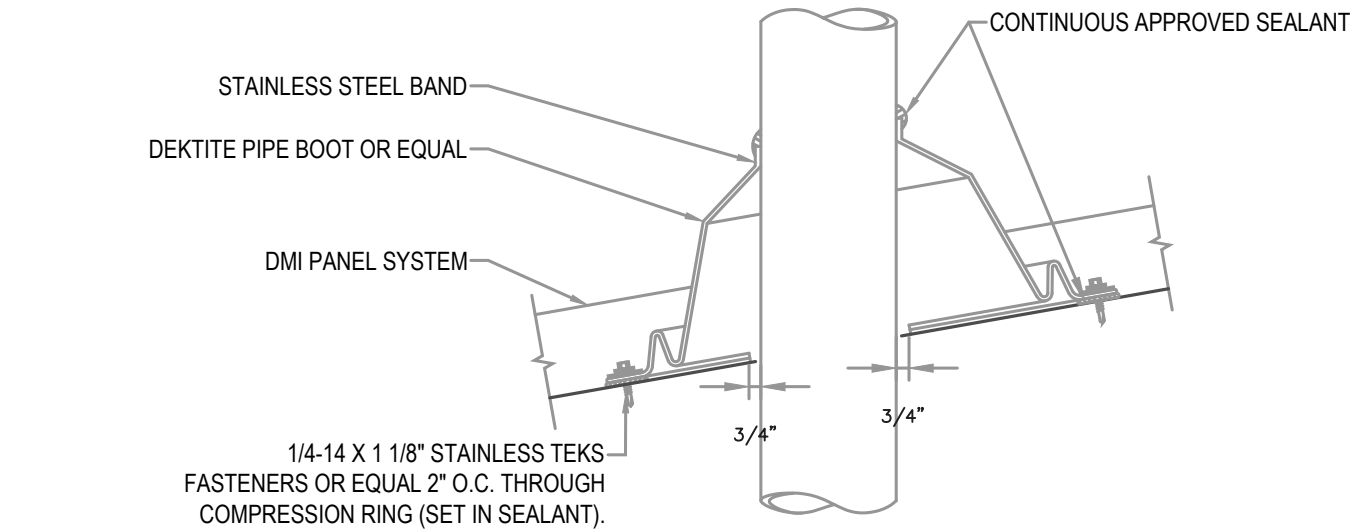
DO NOT ATTACH INTO SOLID SUBSTRATE BELOW.

BOOT SHALL NOT INTERSECT STANDING SEAM VERTICAL LEG. INSTALL IN FLAT AREA OF PANEL ONLY.

IF USING A SQUARE BOOT DETAIL BE SURE TO SET BOOT IN A DIAGONAL OR DIAMOND TO ALLOW WATER FLOW.

## FASTENER NOTE

ALL EXTERIOR FASTENERS ARE TO BE EITHER STAINLESS OR PLATED CARBON STEEL.



## HYDROSTATIC PIPE BOOT DETAIL

• **PROVEN** • **DEPENDABLE** • **SUSTAINABLE** •  
**METAL ENVELOPE SYSTEMS SINCE 1988**

[WWW.DMIMETALS.COM](http://WWW.DMIMETALS.COM)

Detail:

**SL20 09-00-IH**

Issue/Rev Date:

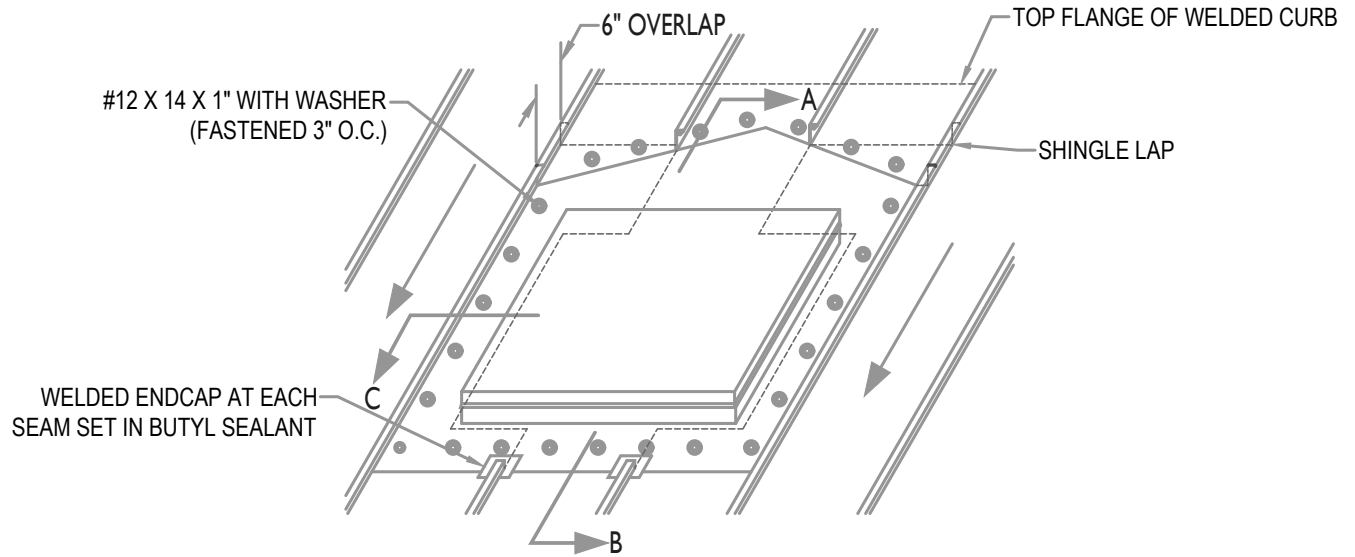
**01/17**

Scale:

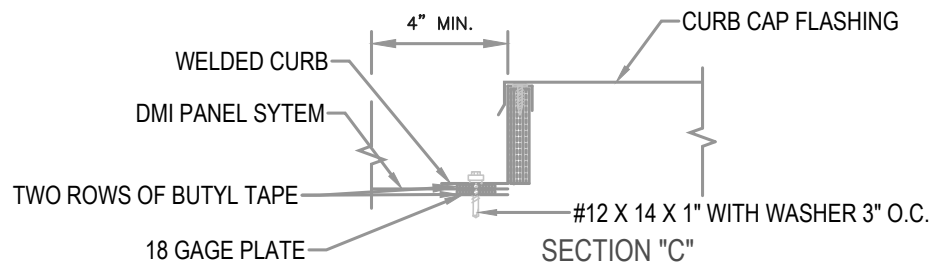
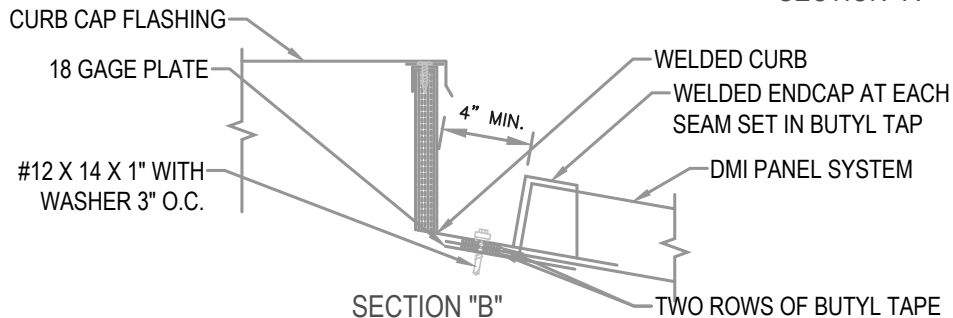
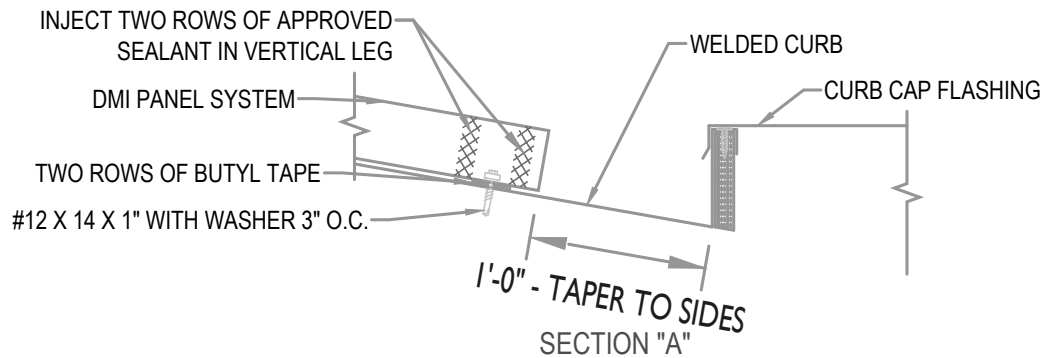
**3"=1'-0"**

## FASTENER NOTE

ALL EXTERIOR FASTENERS ARE TO BE EITHER STAINLESS OR PLATED CARBON STEEL.



WELDED CURB DETAIL INSTRUCTIONS



## HYDROSTATIC CURB

• **PROVEN** • **DEPENDABLE** • **SUSTAINABLE** •  
**METAL ENVELOPE SYSTEMS SINCE 1988**

WWW.DMIMETALS.COM

Detail:

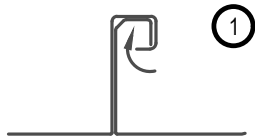
**SL20 10-00-IH**

Issue/Rev Date:

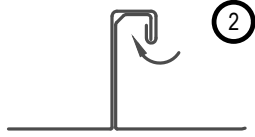
**01/17**

Scale:

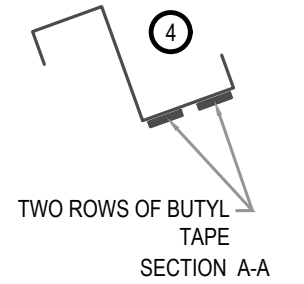
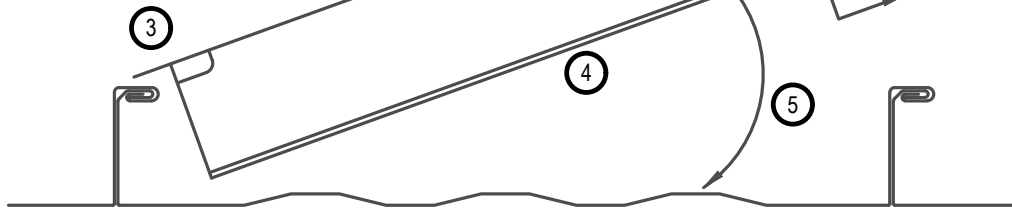
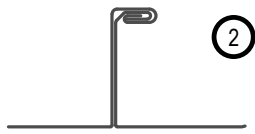
**3"=1'-0"**



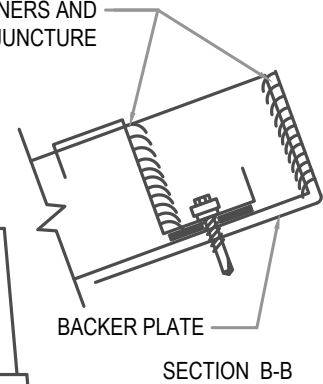
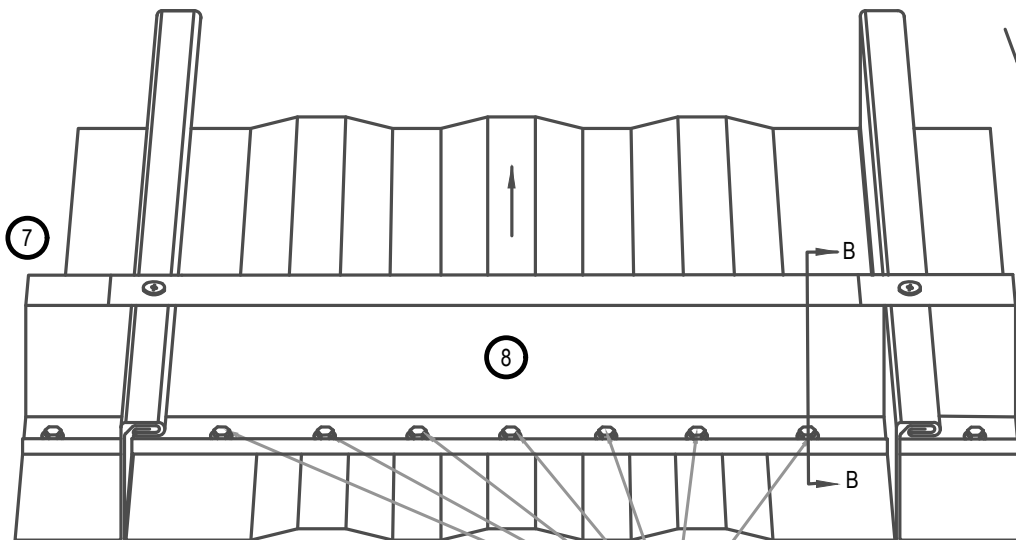
- Step 1: Fold small lip 180°  
 Step 2: Fold outer lip (approx.) 180°  
 Step 3: Notch zee closure.  
 Step 4: Apply two rows of butyl tape to underside of zee.



- Step 5: Install zee closure.  
 Step 6: Seal corners of zee and panel legs.  
 Step 7: Attach top of zee to panel rib.  
 Step 8: Fasten zee through panel to backer plate



INJECT APPROVED SEALANT IN CORNERS AND ENTIRE PANEL BACKER PLATE JUNCTURE



NOTE: BACKER PLATE NOT SHOWN FOR CLARITY

FASTENERS PER SHOP DRAWINGS



## HYDROSTATIC Z INSTALLATION GUIDE

• **PROVEN** • **DEPENDABLE** • **SUSTAINABLE** •  
**METAL ENVELOPE SYSTEMS SINCE 1988**

WWW.DMIMETALS.COM

Detail:

SL20 11-00-IH

Issue/Rev Date:

01/17

Scale:

3"=1'-0"