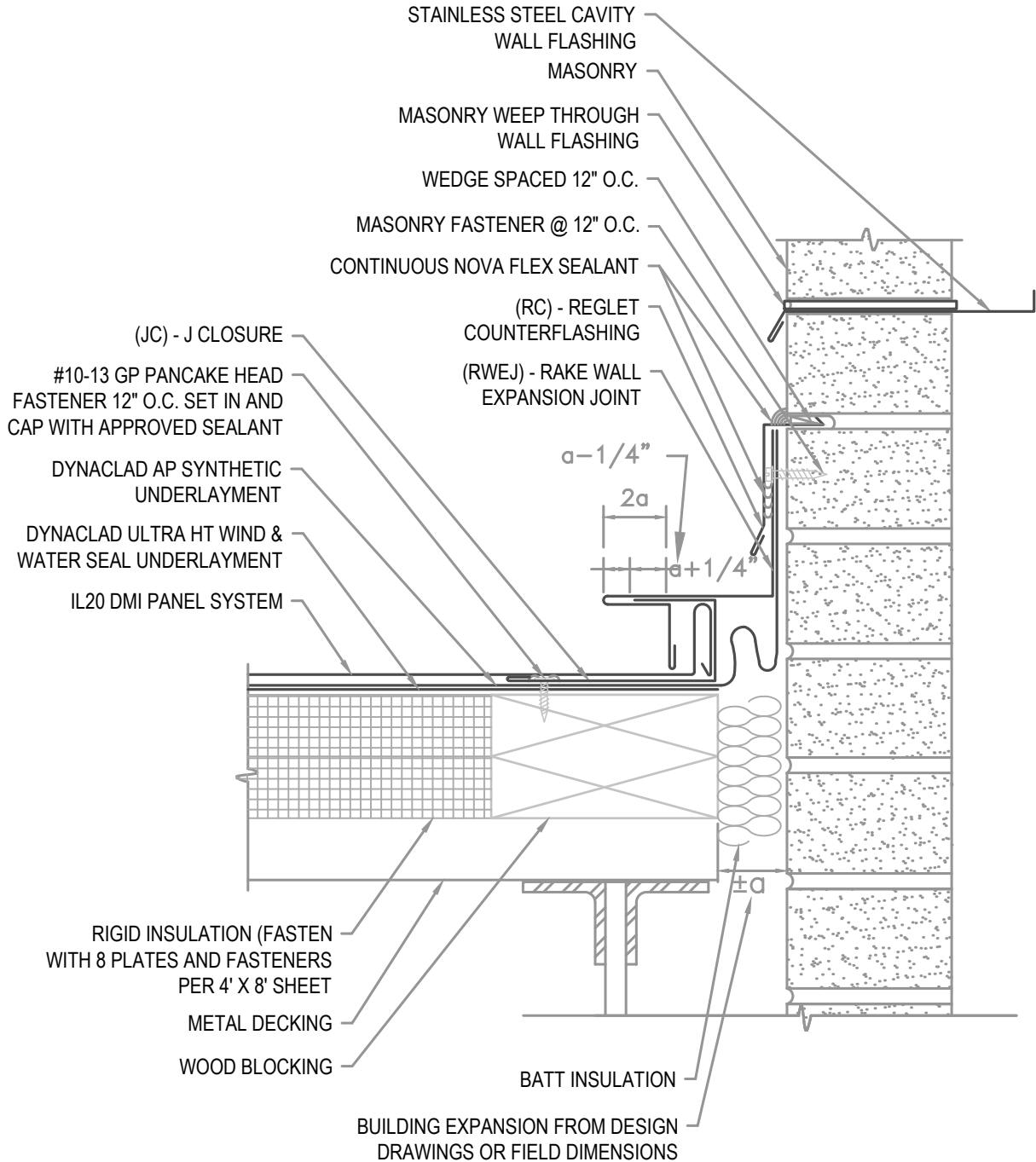


**NOTE**

REGLET FLASHING TO BE INSTALLED BELOW ALL WEEP HOLES.  
SURFACED MOUNT COUNTERFLASHINGS NOT ACCEPTABLE.

**FLASHING LAP NOTE**

LAP RAKE WALL AND REGLET 2" MINIMUM WITH 2 ROWS OF BUTYL SEALANT.



**ARCHITECTURAL EXPANSION JOINT**

**• PROVEN • DEPENDABLE • SUSTAINABLE •**  
**METAL ENVELOPE SYSTEMS SINCE 1988**

WWW.DMIMETALS.COM

Detail:

IL20 08-01-IA

Issue/Rev Date:

01/17

Scale:

3"=1'-0"