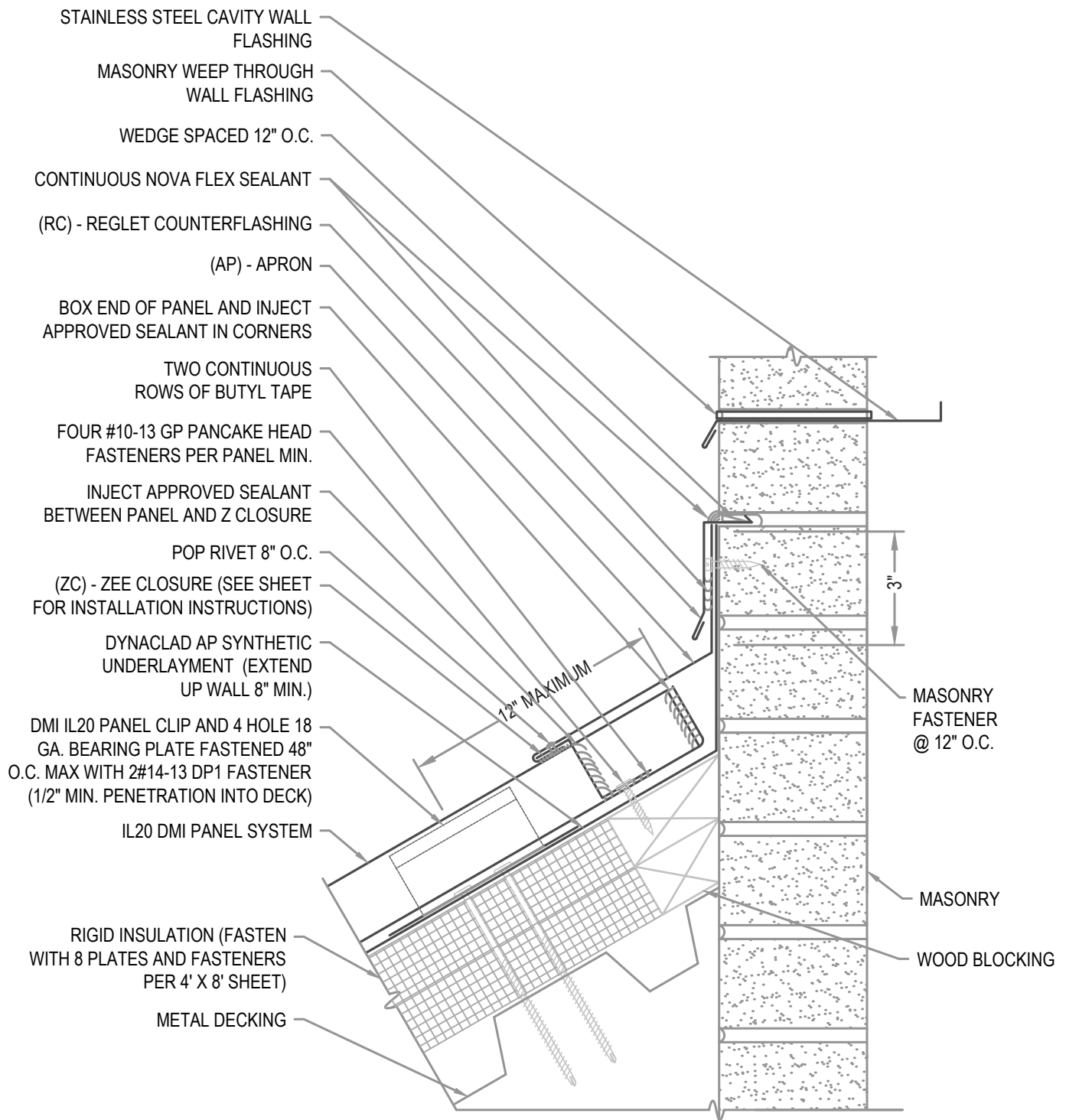


**NOTE**

REGLET FLASHING TO BE INSTALLED BELOW ALL WEEP HOLES.  
SURFACED MOUNT COUNTERFLASHINGS NOT ACCEPTABLE.

**FLASHING LAP NOTE**

LAP APRON AND REGLET 2" MINIMUM WITH 2 ROWS OF BUTYL SEALANT.



**ARCHITECTURAL APRON**

**• PROVEN • DEPENDABLE • SUSTAINABLE •**  
**METAL ENVELOPE SYSTEMS SINCE 1988**

WWW.DMIMETALS.COM

Detail:

**IL20 06-01-IA**

Issue/Rev Date:

**01/17**

Scale:

**3"=1'-0"**