

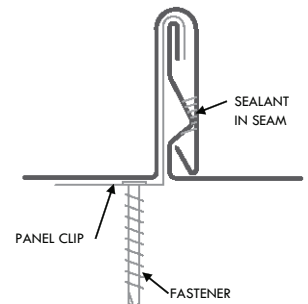
INTER-LOCK IL20 is an architectural panel which is snapped together during installation. The panel is an integral interlocking system by design which installs in one direction from a given starting point. A double male starter panel is available (for a minimal setup fee) and may be installed in the middle of a roof area to achieve a symmetrical layout. Inter-Lock is a very flexible panel which works well with a wide range of building designs.

Uses & Applications

Product uses include roofs with slopes as low as 3:12, vertical fascia, equipment screens, mansards, and wall panels. This system may also be installed on tapered roof areas.

Advantages

- Factory Applied Non-Curing Sealant - for superior watertightness
- Engineered Snap-Together design - for easy installation
- Symmetrical Visual Aesthetics - providing non-directional appearance
- Expansion Clips - allows for thermal expansion and contraction
- Continuous Interlocking Seam - no seam disengagement
- Anti-Siphoning Seam Design - prevents water infiltration
- Continuous Roll Formed Lengths - eliminates need for panel lap joints (4' min. panel length)
- Total System Warranties available - for total confidence

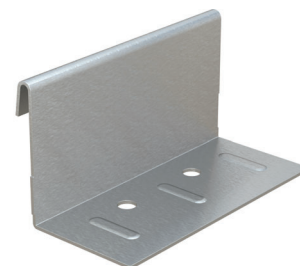


Seam Cross Section

Performance Tested

- UL-580 Wind Uplift
- ASTM E1592 Uniform Static Air Pressure
- ASTM E331 Water Penetration
- ASTM E283 Air Leakage

Please consult DMI for applicability of test reports for your project.



Expansion Clip

800.828.1510 ■ www.dmimetals.com ■ sales@dmimetals.com

PROVEN. DEPENDABLE. SUSTAINABLE.

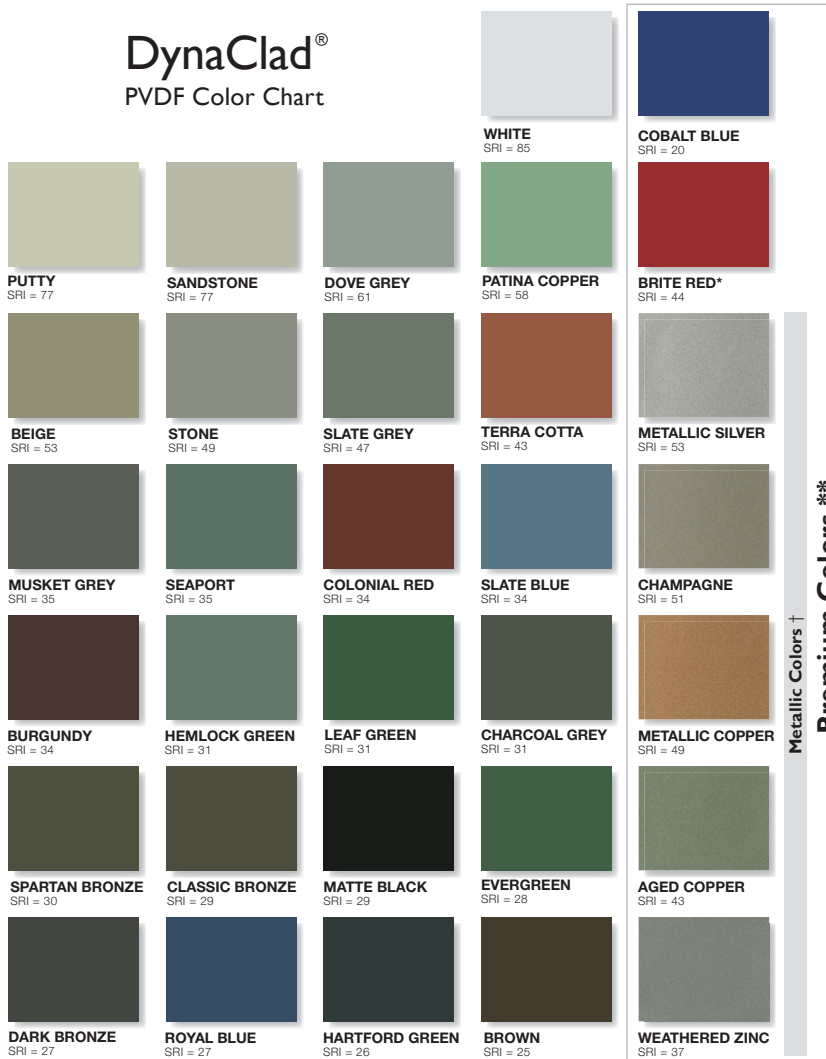
METAL ENVELOPE SYSTEMS SINCE 1988

Project Name: _____
 Architect: _____
 Installing Contractor: _____
 General Contractor: _____
 Specification Section: _____

Stiffener Profile



DynaClad® PVDF Color Chart



Custom Colors Available

Colors shown are samples and may vary slightly from actual material. Please consult DMI Color Chart for stocking color availability.

†Metallic colors are directionally sensitive and therefore entire roof areas should be ordered at once time to ensure uniformity.

Double Male Panel is not available in Metallic Colors.

*Brite Red has a clear coat. **Premium colors carry an upcharge.

Panel Width

12"
 16"
 18" (17.75")

Clip

Expansion

Substrate

24 ga. Galvalume®
 22 ga. Galvalume®
 .032 Aluminum
 .040 Aluminum

16 oz. Copper
 20 oz. Copper

Embossed:

Consult DMI for minimum quantities, upcharges, set up fees and extended lead times

Standard Finishes (N/A on Mill Finishes)

DynaClad® PVDF: _____
 Acrylic Coated Galvalume (Acrylume®)
 Clear Anodized Aluminum

Premium Finishes*

DynaClad® Metallic PVDF: _____
 DynaClad® Brite Red PVDF
 DynaClad® Cobalt Blue PVDF
 DynaClad® Standard Color PVDF w/ Clearcoat: _____
 DynaClad® Premium Color PVDF w/ Clearcoat: _____
 Custom Color: _____

*Premium Colors subject to minimum quantities, extended lead times and upcharges.
 Consult DMI for details.

Warranty

Finish

DynaClad® Paint Finish
 Galvalume® 20 Year - 6 Month (Substrate)
 Aluminum Sheet 2 Year (Substrate)

Watertight

DynaClad® Metal Roofing System: _____
 DynaClad® Metal Roofing System NDL: _____

Since 1988 Dimensional Metals, Inc. (DMI) has specialized in the manufacturing of architectural metal roof and wall panel systems as well as fabricated architectural sheet metal for the construction industry. We are backed by decades of proven metal envelope design, dependable Technical Field Services, and an Engineering Department delivering sustainable solutions. You are sure to find the product that will best enhance your design.

800.828.1510 ■ www.dmimetals.com ■ sales@dmimetals.com

PROVEN. DEPENDABLE. SUSTAINABLE.

METAL ENVELOPE SYSTEMS SINCE 1988