

MAXIMUM PANEL ATTACHMENT FASTENER
SPACING IS 24" O.C. ALL FASTENERS TO
PENETRATE WOOD 3/4" MIN. AND METAL
FRAMING 1/2" MIN.



SOFFIT TO WALL PANEL

• **PROVEN** • **DEPENDABLE** • **SUSTAINABLE** •
METAL ENVELOPE SYSTEMS SINCE 1988
WWW.DMIMETALS.COM

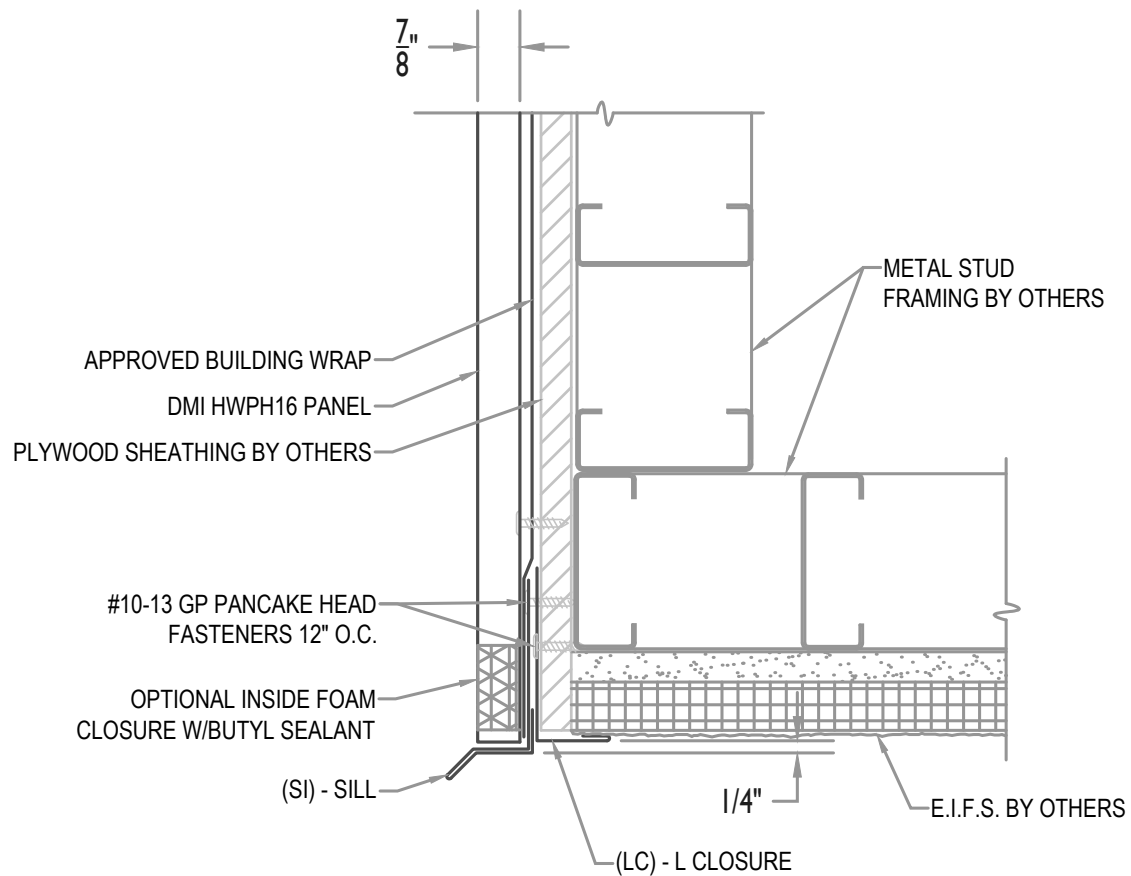
Detail:
HWPH16-V-01-00

Issue/Rev Date:

01/17

Scale:

3"=1'-0"



MAXIMUM PANEL ATTACHMENT FASTENER SPACING IS 24" O.C. ALL FASTENERS TO PENETRATE WOOD 3/4" MIN. AND METAL FRAMING 1/2" MIN.



WALL PANEL W/ (EIFS SOFFIT)

• PROVEN • DEPENDABLE • SUSTAINABLE •

METAL ENVELOPE SYSTEMS SINCE 1988

WWW.DMIMETALS.COM

Detail:

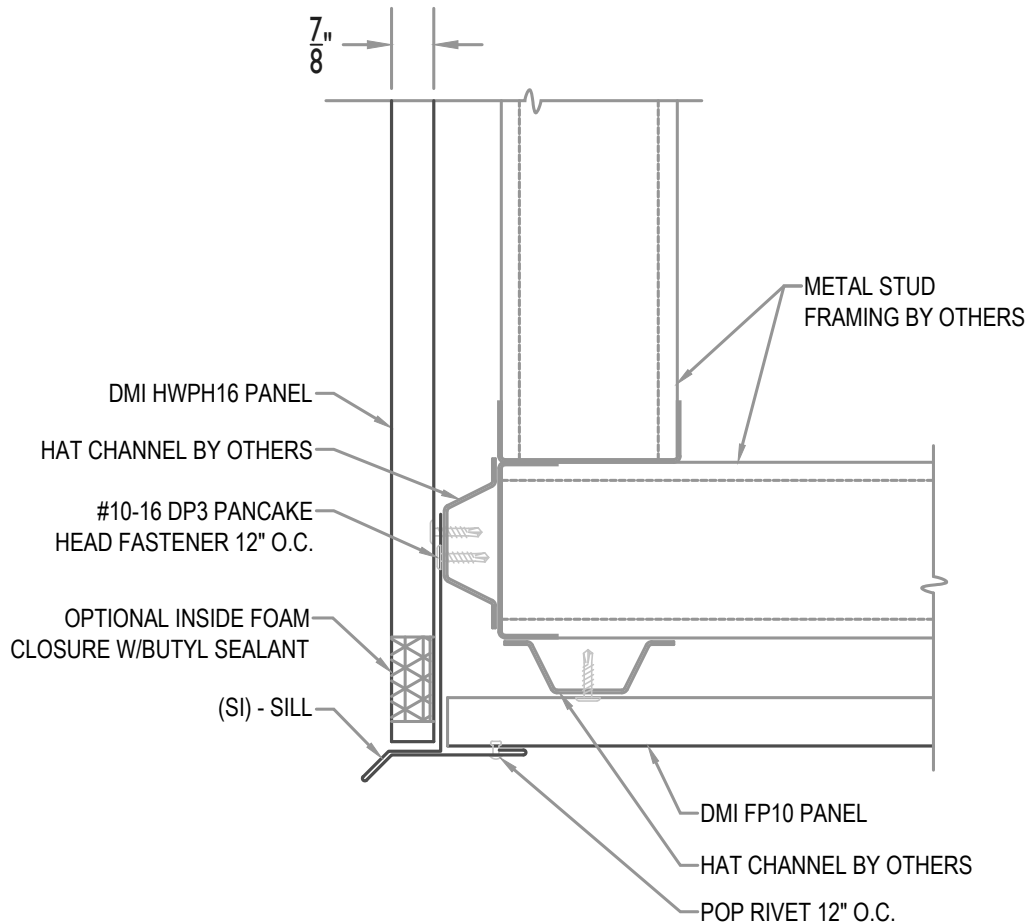
HWPH16-V-02-00

Issue/Rev Date:

01/17

Scale:

3"=1'-0"



MAXIMUM PANEL ATTACHMENT FASTENER
SPACING IS 24" O.C. ALL FASTENERS TO
PENETRATE WOOD 3/4" MIN. AND METAL
FRAMING 1/2" MIN.



WALL PANEL W/ (PANEL SOFFIT)

• PROVEN • DEPENDABLE • SUSTAINABLE •

METAL ENVELOPE SYSTEMS SINCE 1988

WWW.DMIMETALS.COM

Detail:

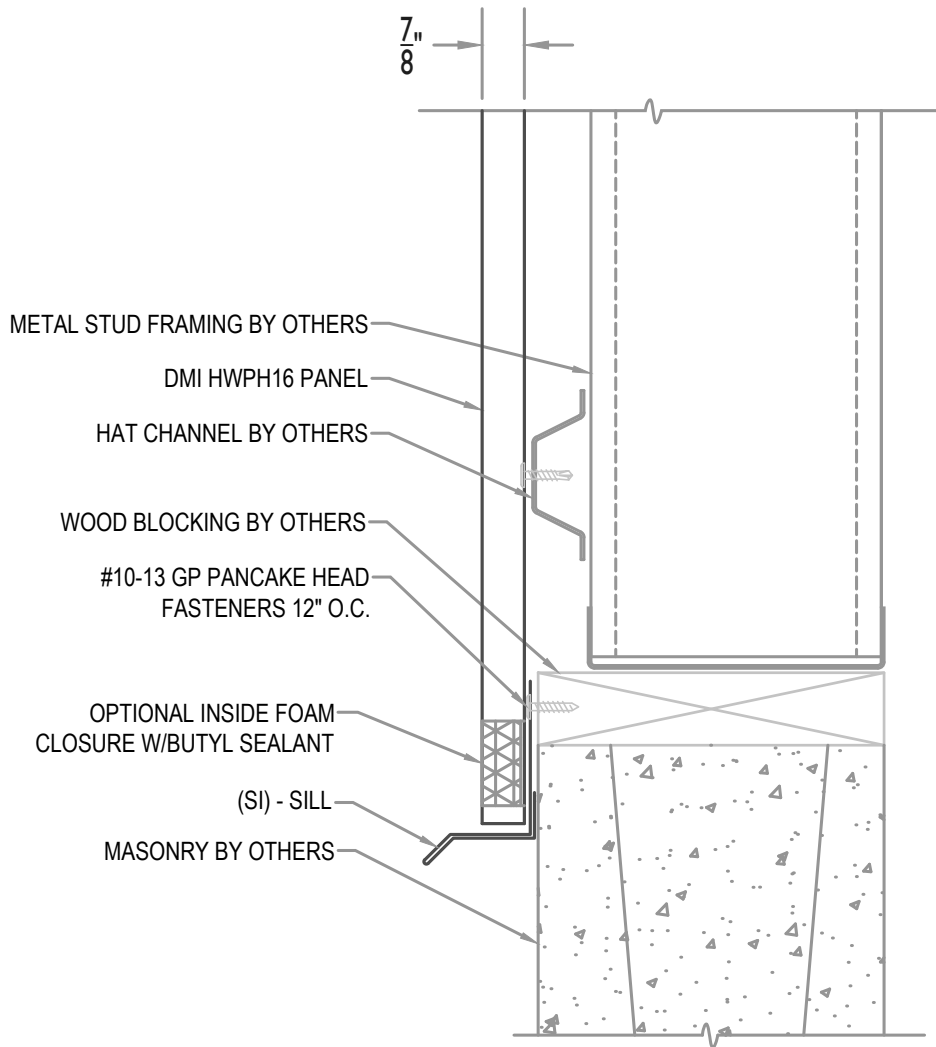
HWP16-V-02-01

Issue/Rev Date:

01/17

Scale:

3"=1'-0"



MAXIMUM PANEL ATTACHMENT FASTENER
SPACING IS 24" O.C. ALL FASTENERS TO
PENETRATE WOOD 3/4" MIN. AND METAL
FRAMING 1/2" MIN.



WALL PANEL W/ SILL (AT BLOCK)

• **PROVEN** • **DEPENDABLE** • **SUSTAINABLE** •
METAL ENVELOPE SYSTEMS SINCE 1988

WWW.DMIMETALS.COM

Detail:

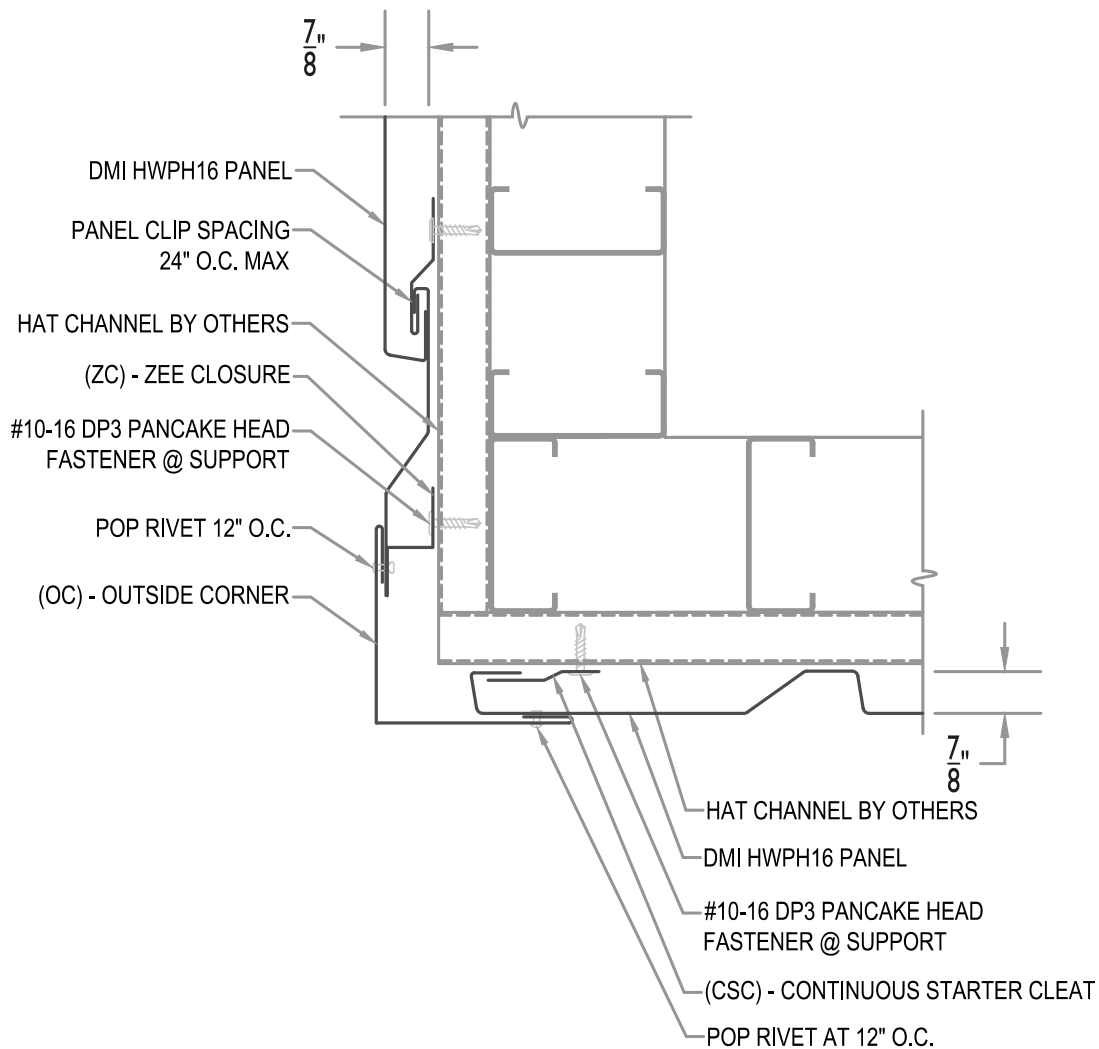
HWP16-V-02-02

Issue/Rev Date:

01/17

Scale:

3"=1'-0"



MAXIMUM PANEL ATTACHMENT FASTENER SPACING IS 24" O.C. ALL FASTENERS TO PENETRATE WOOD 3/4" MIN. AND METAL FRAMING 1/2" MIN.



OUTSIDE CORNER

• **PROVEN** • **DEPENDABLE** • **SUSTAINABLE** •
METAL ENVELOPE SYSTEMS SINCE 1988
WWW.DMIMETALS.COM

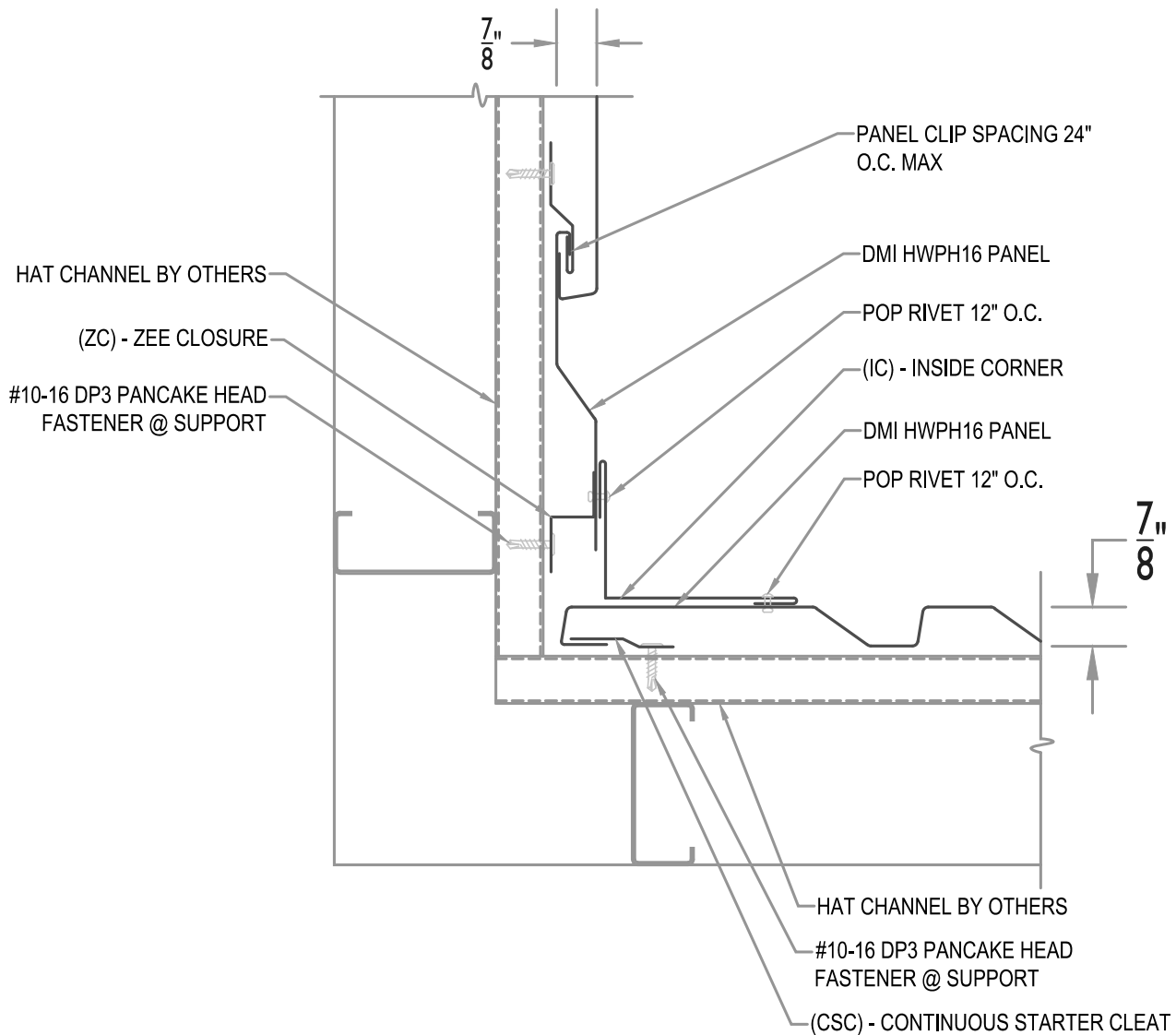
Detail:
HWP16-V-03-00

Issue/Rev Date:

01/17

Scale:

3"=1'-0"



MAXIMUM PANEL ATTACHMENT FASTENER SPACING IS 24" O.C. ALL FASTENERS TO PENETRATE WOOD 3/4" MIN. AND METAL FRAMING 1/2" MIN.



INSIDE CORNER

• **PROVEN** • **DEPENDABLE** • **SUSTAINABLE** •
METAL ENVELOPE SYSTEMS SINCE 1988
WWW.DMIMETALS.COM

Detail:
HWP16-V-03-01

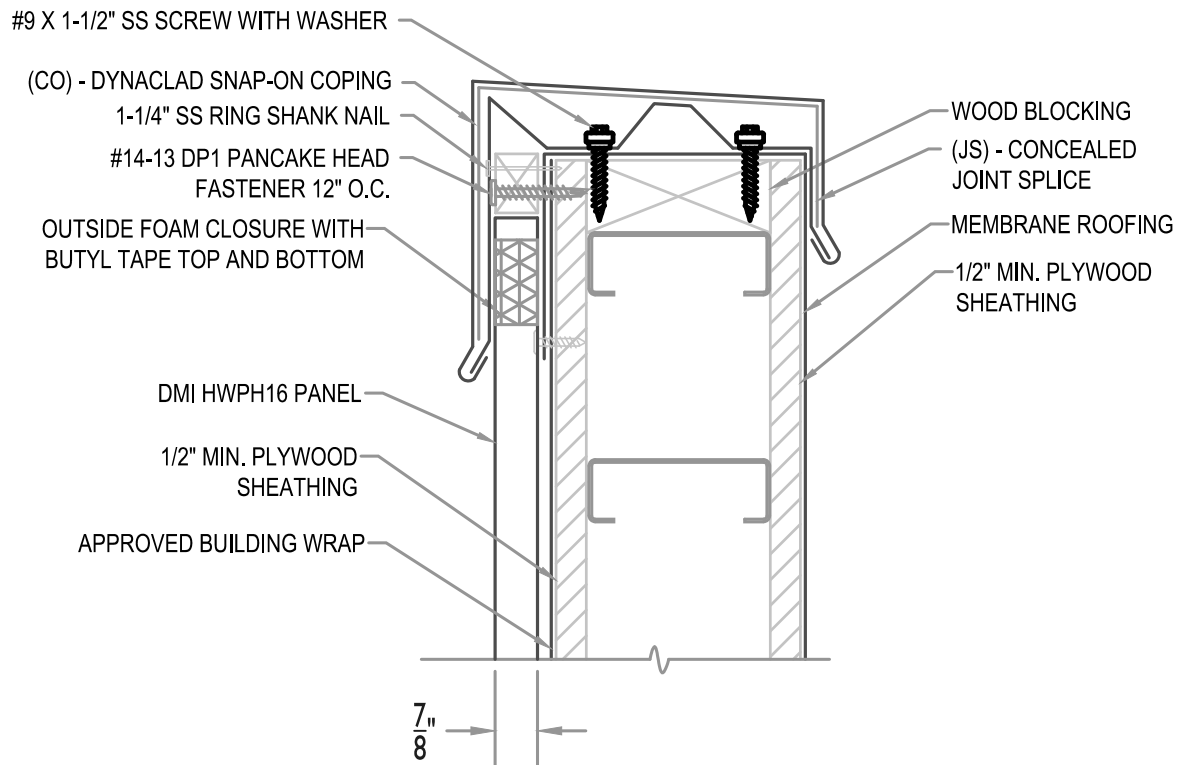
Issue/Rev Date:

01/17

Scale:

3"=1'-0"

SEE DMI DYNACLAD EDGE INSTALLATION
GUIDE FOR COMPLETE FASTENING AND
INSTALLATION INFORMATION FOR ES-1
RATED SNAP-ON COPING



MAXIMUM PANEL ATTACHMENT FASTENER
SPACING IS 24" O.C. ALL FASTENERS TO
PENETRATE WOOD 3/4" MIN. AND METAL
FRAMING 1/2" MIN.



COPING WITH WOOD SUBSTRATE

• **PROVEN** • **DEPENDABLE** • **SUSTAINABLE** •
METAL ENVELOPE SYSTEMS SINCE 1988

WWW.DMIMETALS.COM

Detail:

HWP16-V-04-00

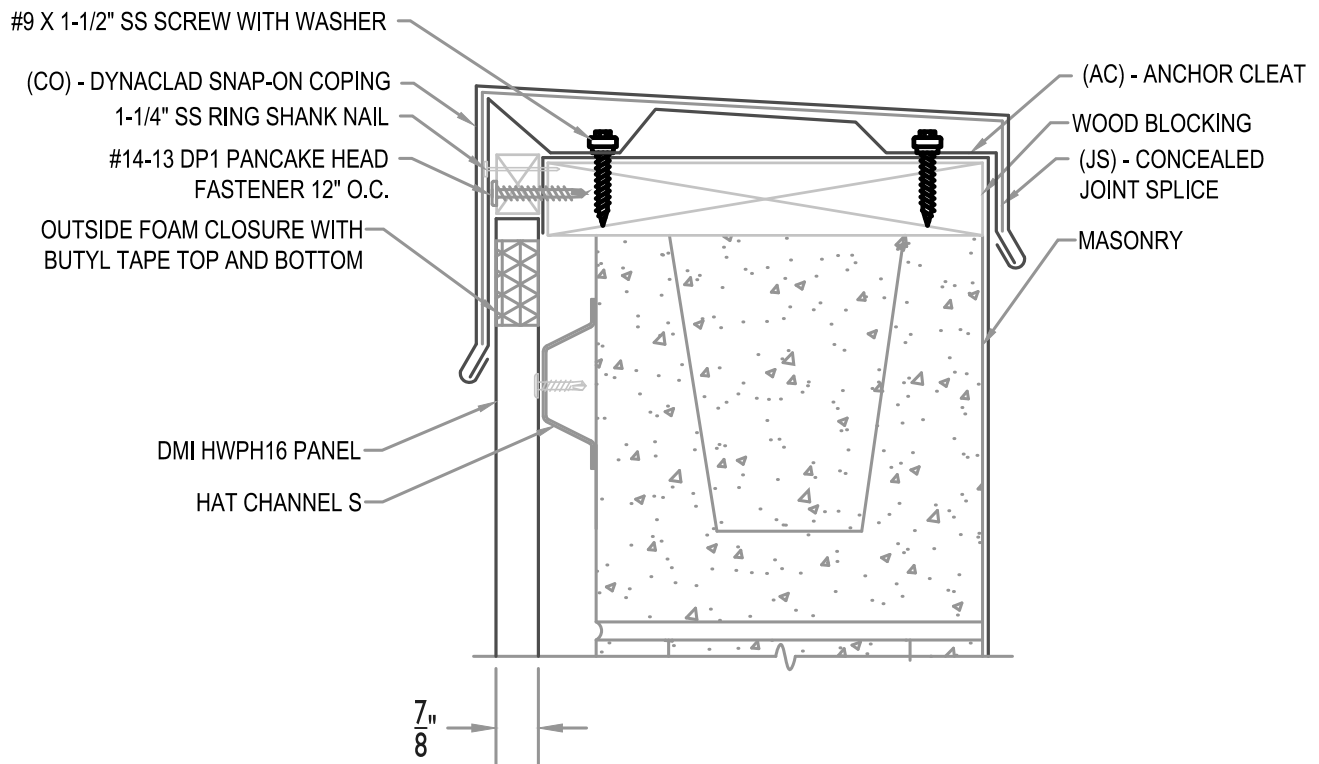
Issue/Rev Date:

01/17

Scale:

3"=1'-0"

SEE DMI DYNACLAD EDGE INSTALLATION
GUIDE FOR COMPLETE FASTENING AND
INSTALLATION INFORMATION FOR ES-1
RATED SNAP-ON COPING



MAXIMUM PANEL ATTACHMENT FASTENER
SPACING IS 24" O.C. ALL FASTENERS TO
PENETRATE WOOD 3/4" MIN. AND METAL
FRAMING 1/2" MIN.



COPING WITH HAT CHANNEL

• **PROVEN** • **DEPENDABLE** • **SUSTAINABLE** •
METAL ENVELOPE SYSTEMS SINCE 1988
WWW.DMIMETALS.COM

Detail:

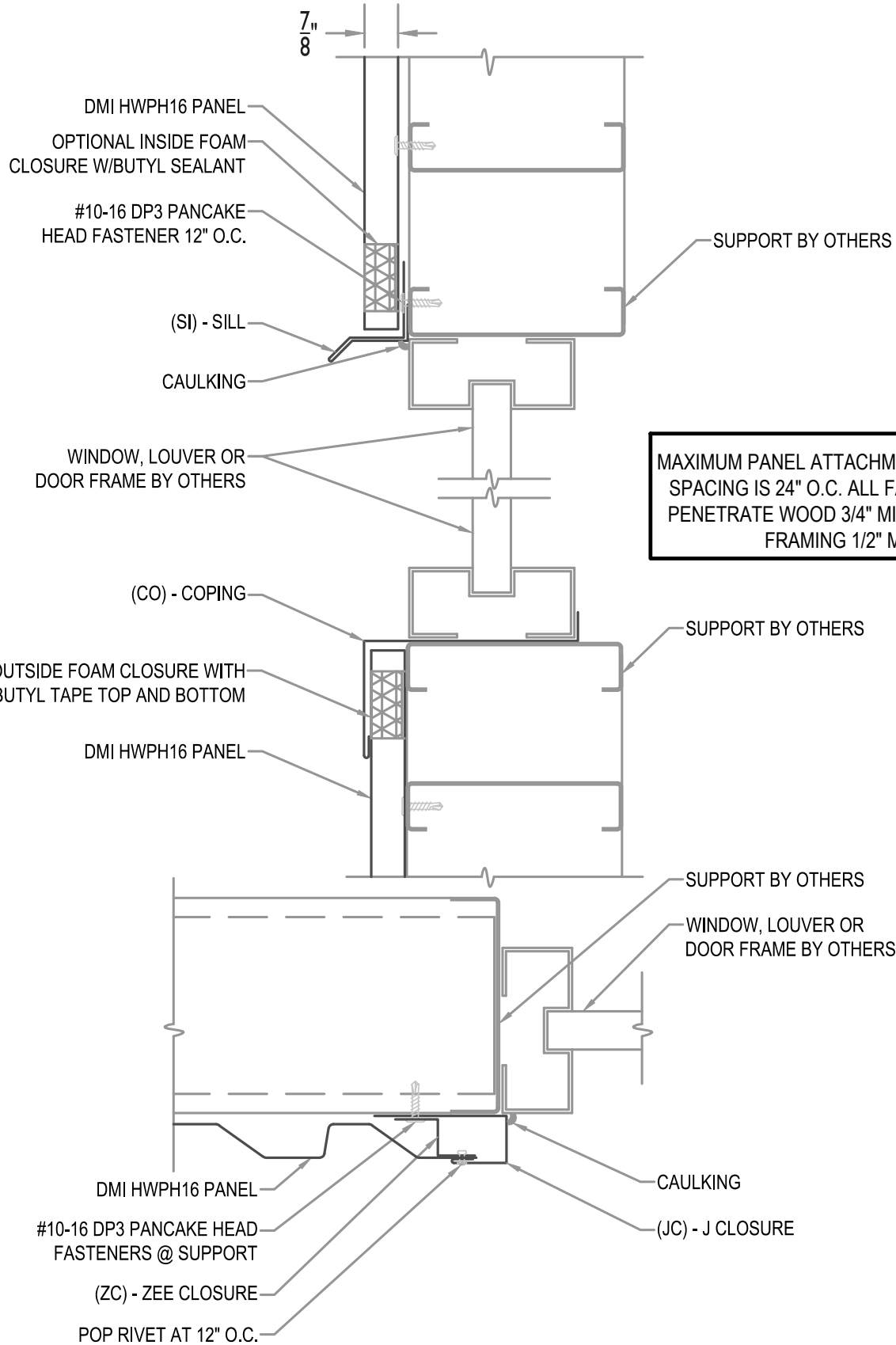
HWP16-V-04-01

Issue/Rev Date:

01/17

Scale:

3"=1'-0"



OPENING HEAD, SILL AND JAMB

• **PROVEN** • **DEPENDABLE** • **SUSTAINABLE** •
METAL ENVELOPE SYSTEMS SINCE 1988
WWW.DMIMETALS.COM

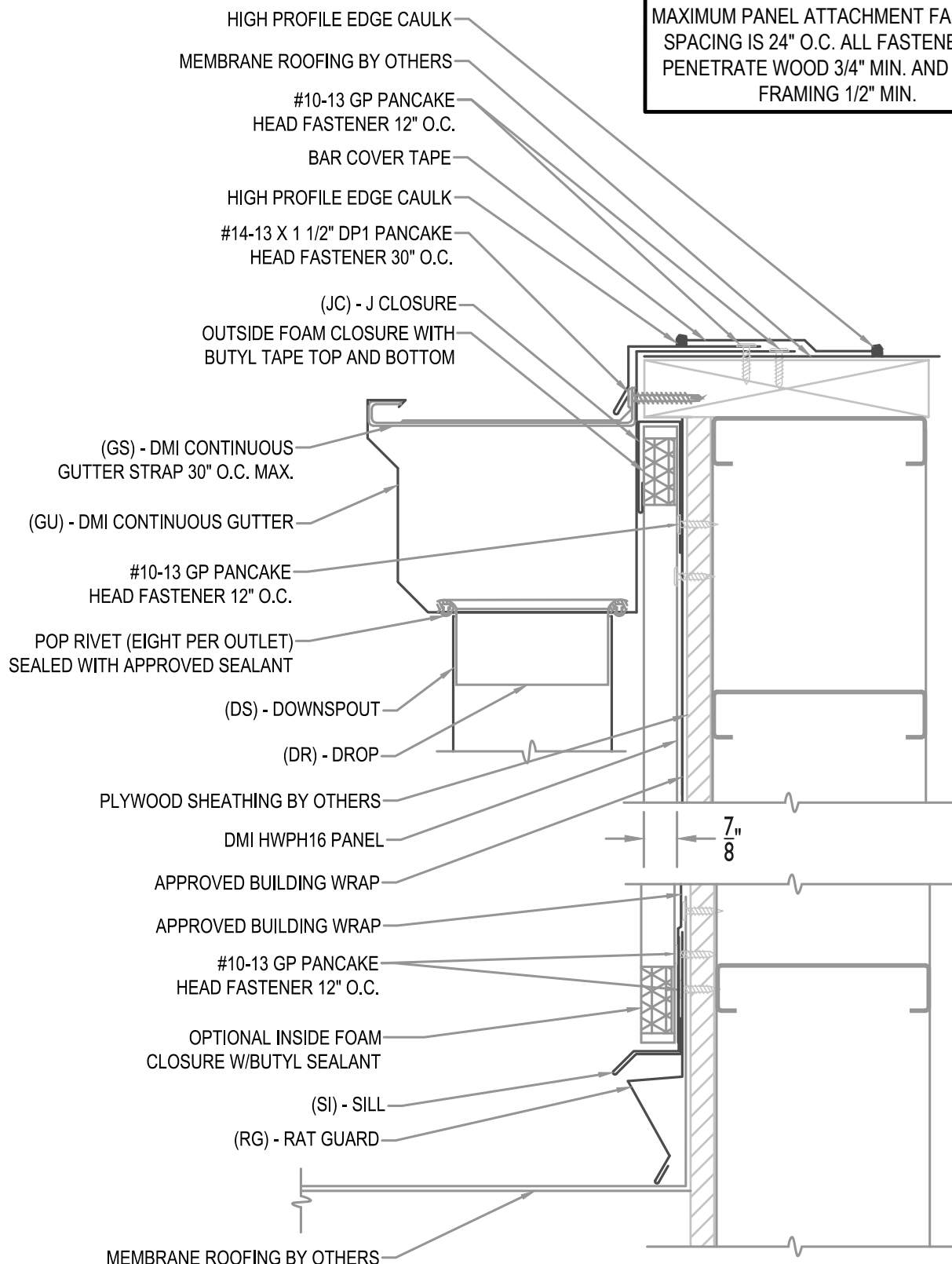
Detail:
HWP16-V-05-00

Issue/Rev Date:

01/17

Scale:

3"=1'-0"



MAXIMUM PANEL ATTACHMENT FASTENER
SPACING IS 24" O.C. ALL FASTENERS TO
PENETRATE WOOD 3/4" MIN. AND METAL
FRAMING 1/2" MIN.



WALL SECTION AT MEMBRANE ROOF

• **PROVEN** • **DEPENDABLE** • **SUSTAINABLE** •
METAL ENVELOPE SYSTEMS SINCE 1988

WWW.DMIMETALS.COM

Detail:

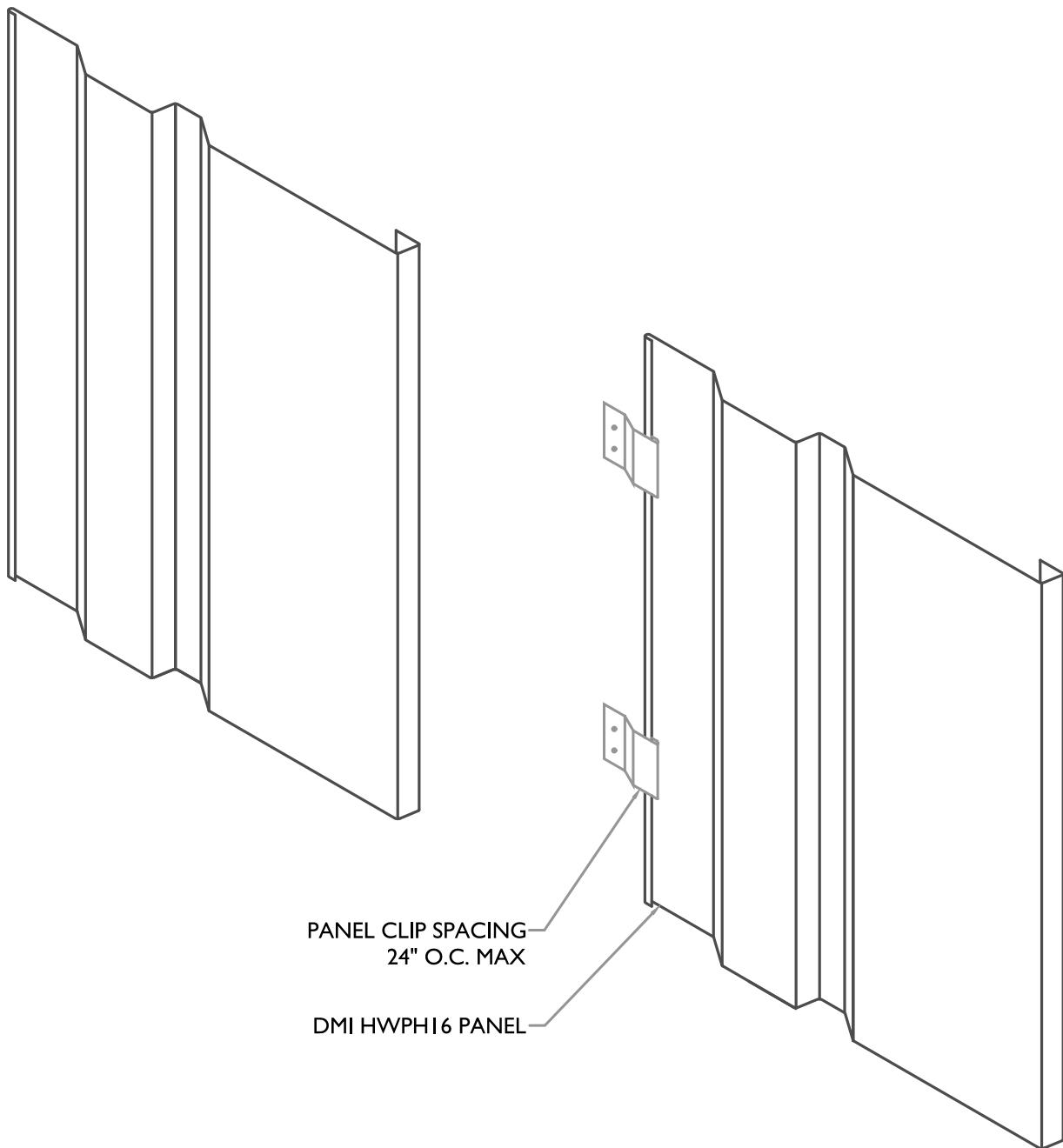
HWPH16-V-06-00

Issue/Rev Date:

01/17

Scale:

3"=1'-0"



PANEL INSTALLATION

• **PROVEN** • **DEPENDABLE** • **SUSTAINABLE** •
METAL ENVELOPE SYSTEMS SINCE 1988

WWW.DMIMETALS.COM

Detail:

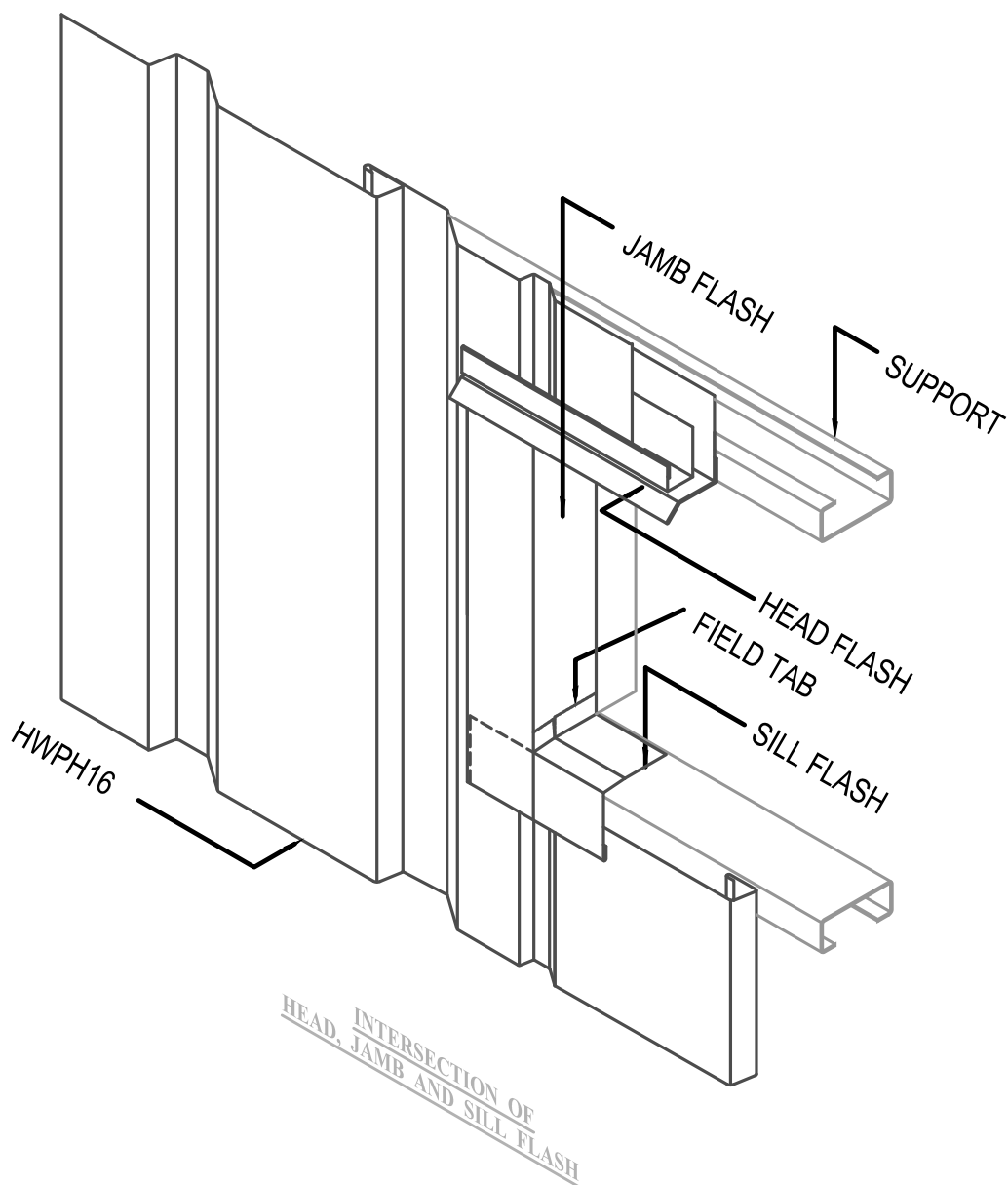
HWPH16-V-07-00

Issue/Rev Date:

01/17

Scale:

3"=1'-0"



ISO HEAD, SILL AND JAMB

• **PROVEN** • **DEPENDABLE** • **SUSTAINABLE** •
METAL ENVELOPE SYSTEMS SINCE 1988

WWW.DMIMETALS.COM

Detail:

HWPB16-V-08-00

Issue/Rev Date:

01/17

Scale:

3"=1'-0"