

MAXIMUM PANEL ATTACHMENT FASTENER  
SPACING IS 24" O.C. ALL FASTENERS TO  
PENETRATE WOOD 3/4" MIN. AND METAL  
FRAMING 1/2" MIN.



## SOFFIT TO WALL PANEL

• **PROVEN** • **DEPENDABLE** • **SUSTAINABLE** •  
**METAL ENVELOPE SYSTEMS SINCE 1988**  
[WWW.DMIMETALS.COM](http://WWW.DMIMETALS.COM)

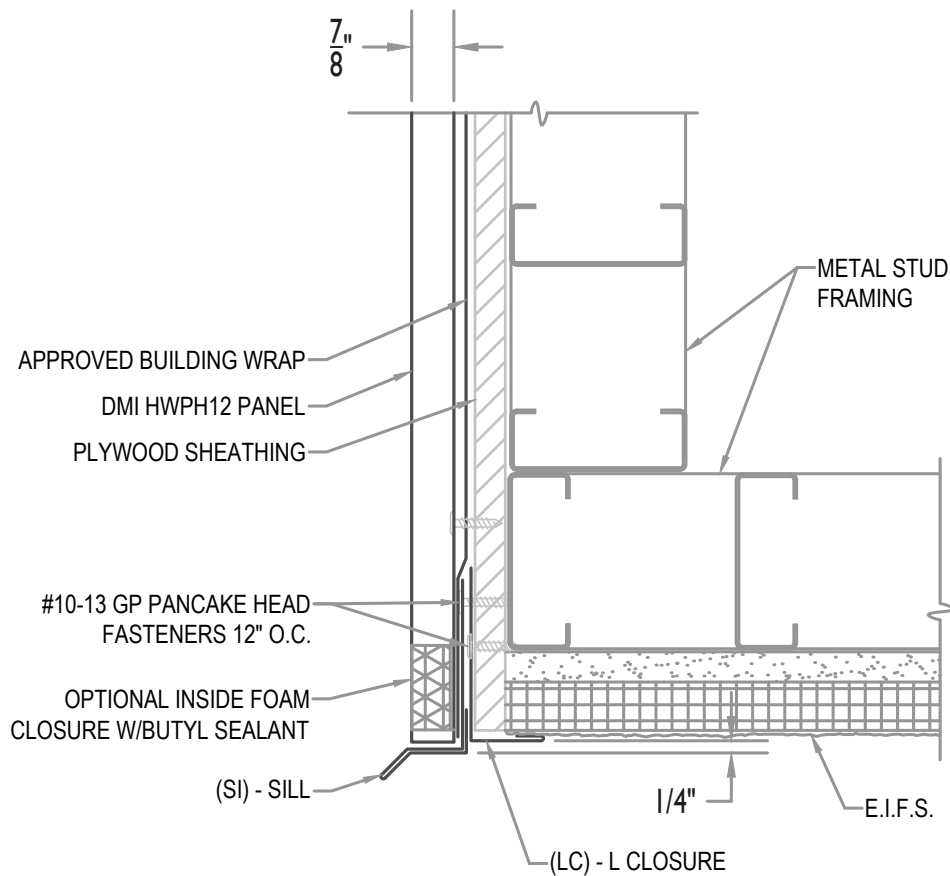
Detail:  
**HWPH12-V- 01-00**

Issue/Rev Date:

**01/17**

Scale:

**3"=1'-0"**



MAXIMUM PANEL ATTACHMENT FASTENER SPACING IS 24" O.C. ALL FASTENERS TO PENETRATE WOOD 3/4" MIN. AND METAL FRAMING 1/2" MIN.



## WALL PANEL W/ (EIFS SOFFIT)

• PROVEN • DEPENDABLE • SUSTAINABLE •

METAL ENVELOPE SYSTEMS SINCE 1988

WWW.DMIMETALS.COM

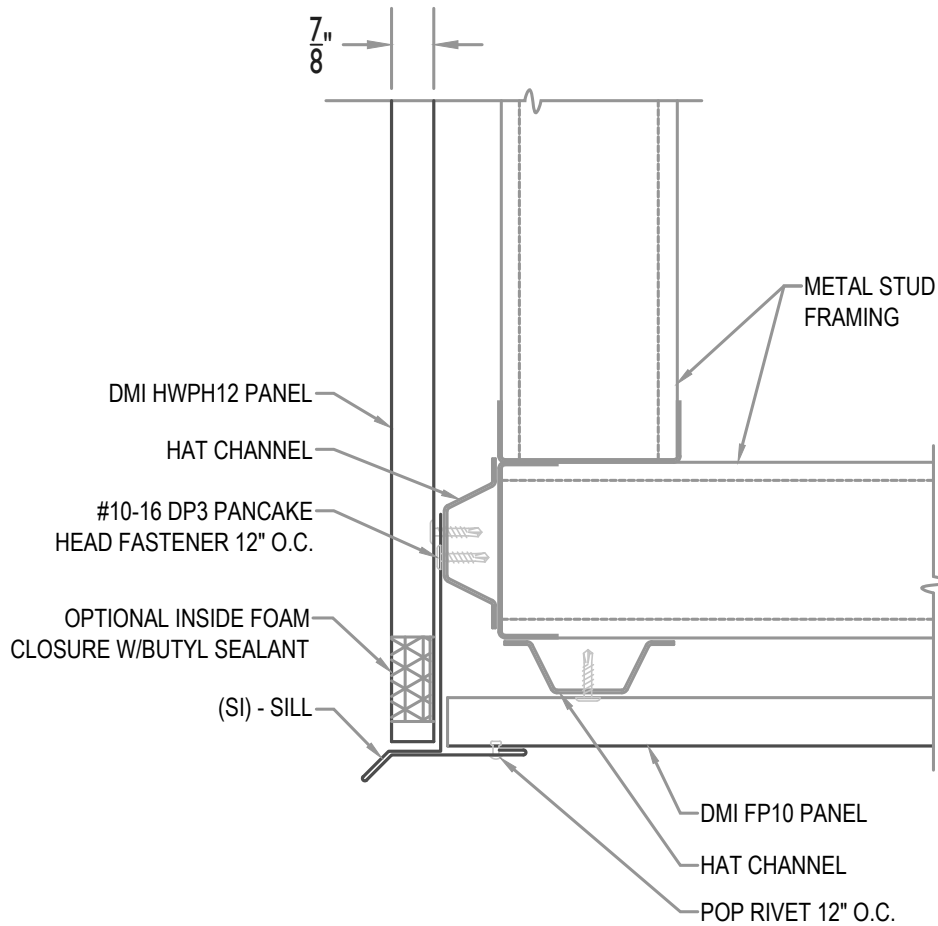
Detail: HWPB12-V- 02-00

Issue/Rev Date:

01/17

Scale:

3"=1'-0"



MAXIMUM PANEL ATTACHMENT FASTENER  
SPACING IS 24" O.C. ALL FASTENERS TO  
PENETRATE WOOD 3/4" MIN. AND METAL  
FRAMING 1/2" MIN.



## WALL PANEL W/ (PANEL SOFFIT)

• PROVEN • DEPENDABLE • SUSTAINABLE •

METAL ENVELOPE SYSTEMS SINCE 1988

WWW.DMIMETALS.COM

Detail:

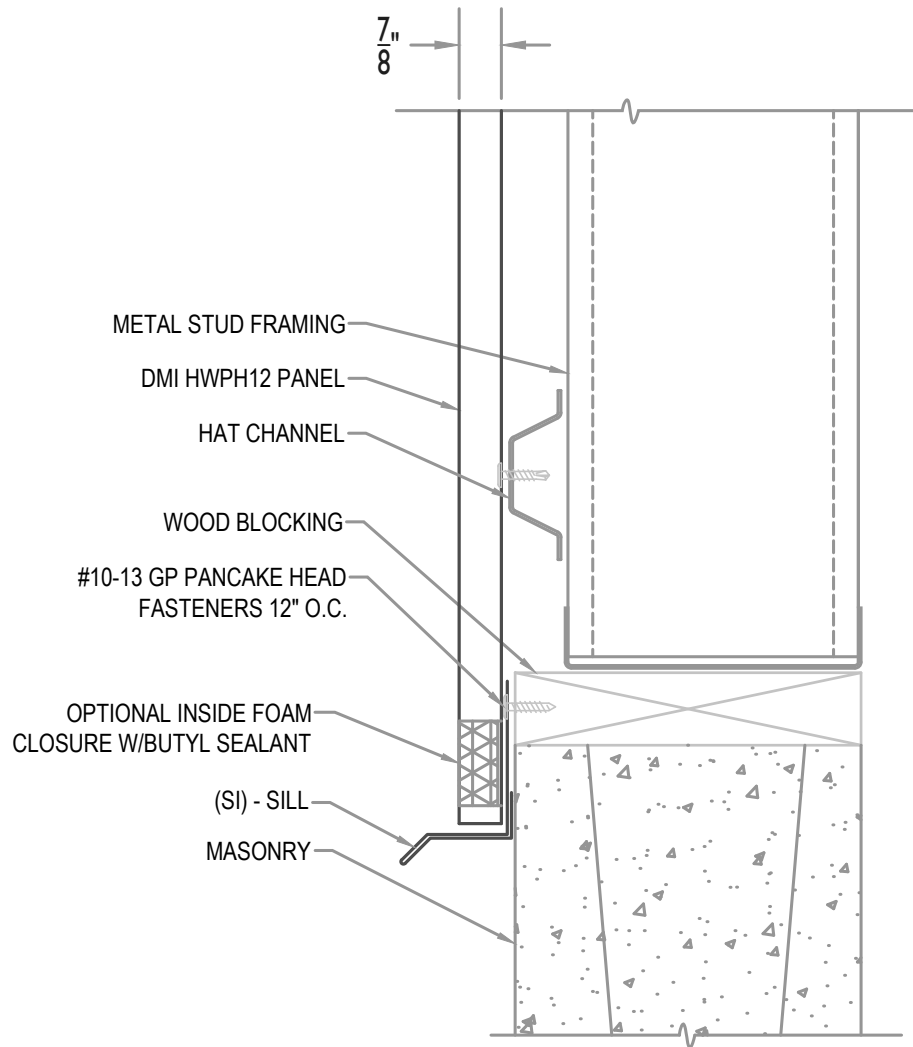
HWP12-V- 02-01

Issue/Rev Date:

01/17

Scale:

3"=1'-0"



MAXIMUM PANEL ATTACHMENT FASTENER SPACING IS 24" O.C. ALL FASTENERS TO PENETRATE WOOD 3/4" MIN. AND METAL FRAMING 1/2" MIN.



WALL PANEL W/ SILL (AT BLOCK)

• **PROVEN** • **DEPENDABLE** • **SUSTAINABLE** •

**METAL ENVELOPE SYSTEMS SINCE 1988**

[WWW.DMIMETALS.COM](http://WWW.DMIMETALS.COM)

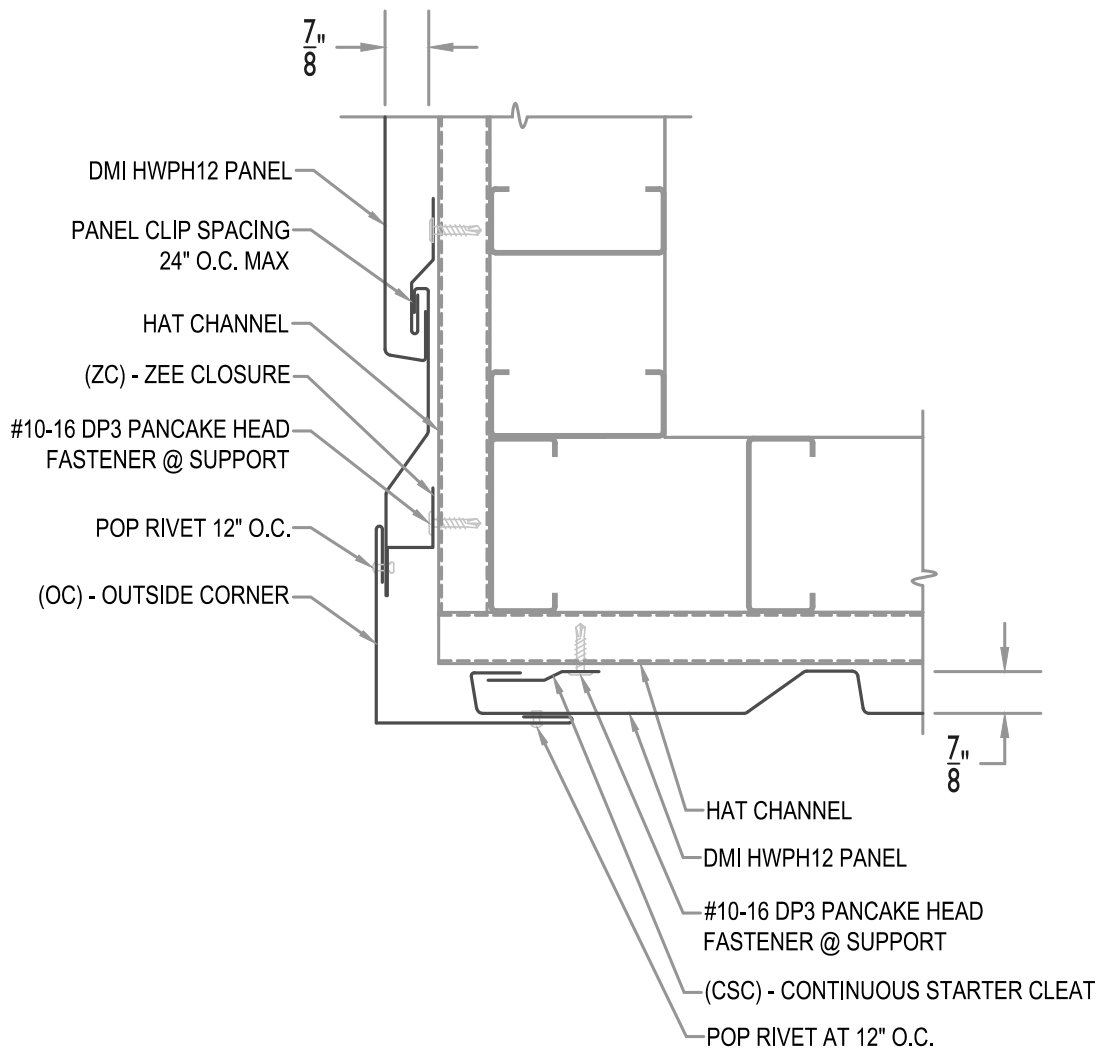
Detail **HWP12-V-**  
**02-02**

Issue/Rev Date:

Scale:

01/17

3"=1'-0"



MAXIMUM PANEL ATTACHMENT FASTENER SPACING IS 24" O.C. ALL FASTENERS TO PENETRATE WOOD 3/4" MIN. AND METAL FRAMING 1/2" MIN.



## OUTSIDE CORNER

• **PROVEN** • **DEPENDABLE** • **SUSTAINABLE** •  
**METAL ENVELOPE SYSTEMS SINCE 1988**  
[WWW.DMIMETALS.COM](http://WWW.DMIMETALS.COM)

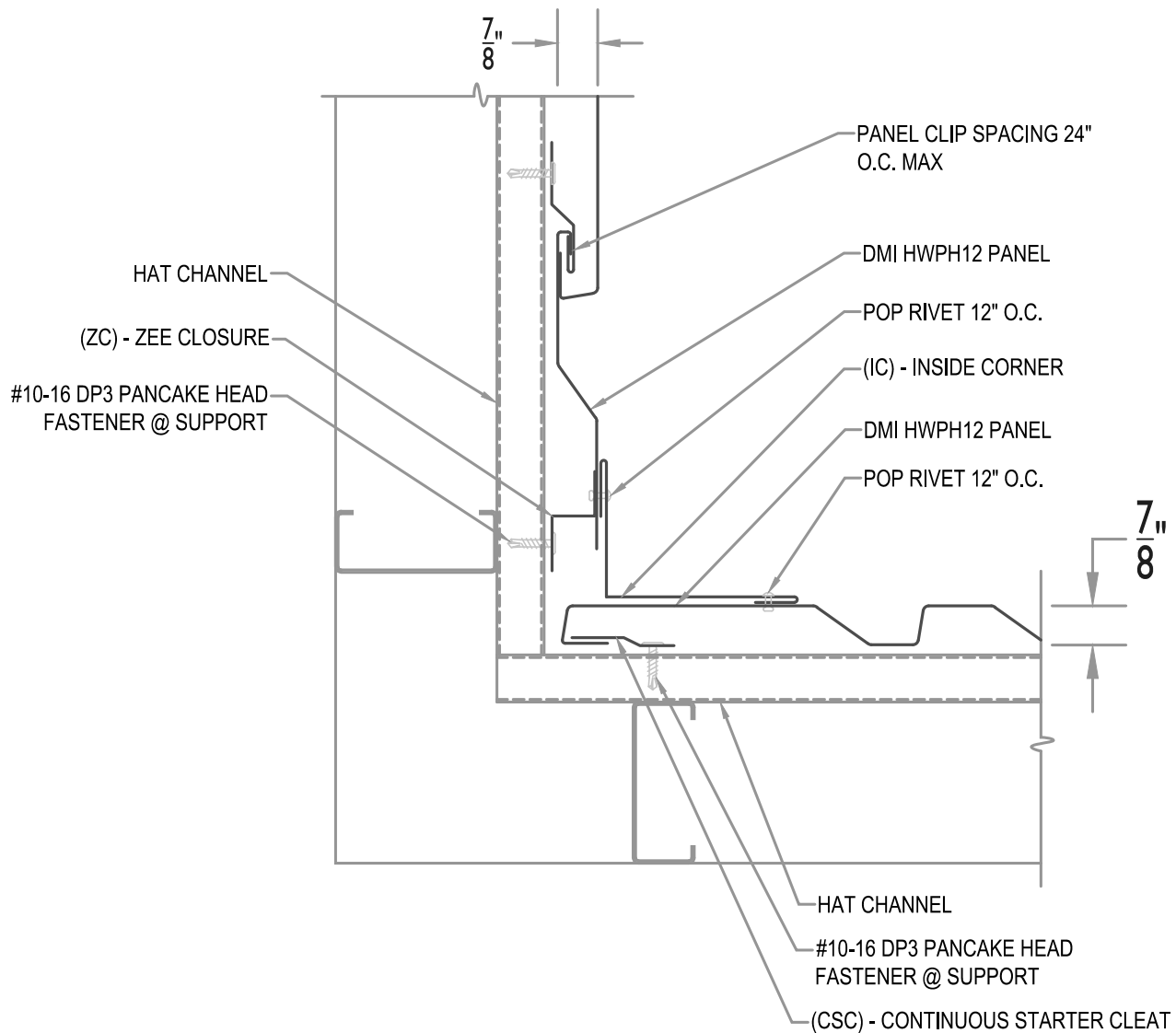
Detail:  
**HWPH12-V- 03-00**

Issue/Rev Date:

01/17

Scale:

3"=1'-0"



MAXIMUM PANEL ATTACHMENT FASTENER SPACING IS 24" O.C. ALL FASTENERS TO PENETRATE WOOD 3/4" MIN. AND METAL FRAMING 1/2" MIN.



## INSIDE CORNER

• **PROVEN** • **DEPENDABLE** • **SUSTAINABLE** •  
**METAL ENVELOPE SYSTEMS SINCE 1988**  
[WWW.DMIMETALS.COM](http://WWW.DMIMETALS.COM)

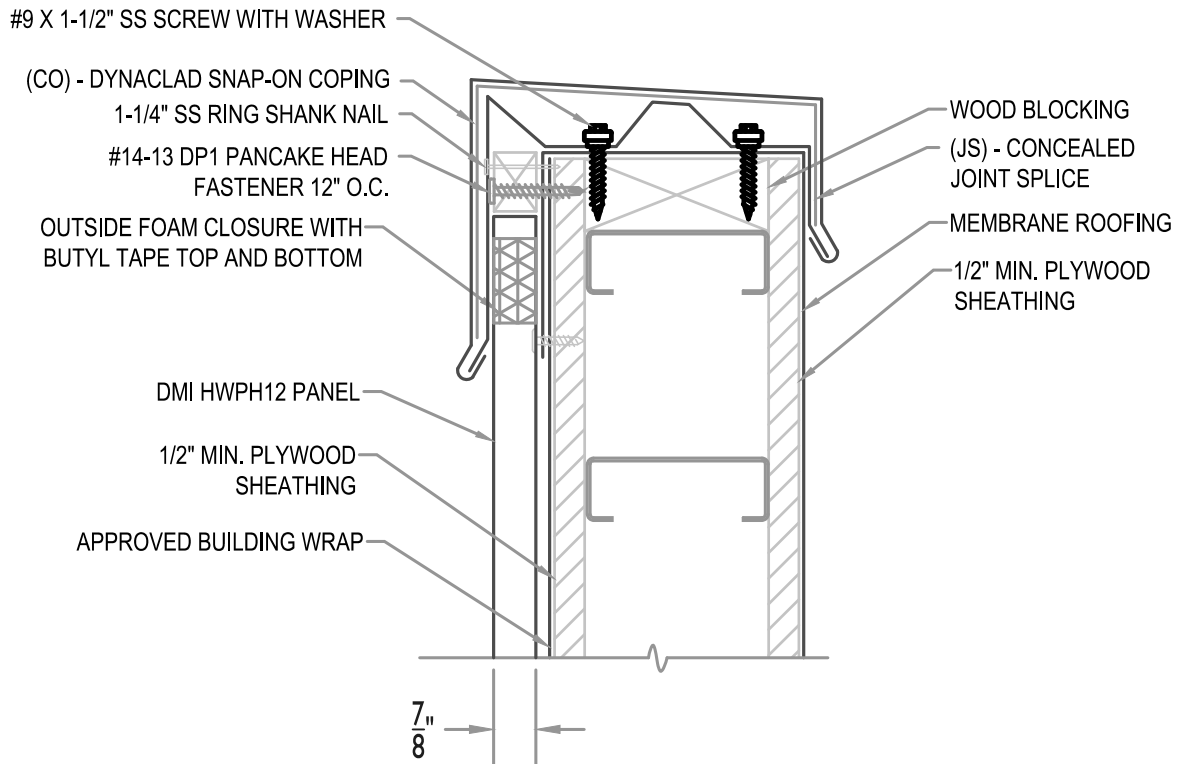
Detail **HWPB12-V-**  
**03-01**

Issue/Rev Date: Scale:

01/17

3"=1'-0"

SEE DMI DYNACLAD EDGE INSTALLATION  
GUIDE FOR COMPLETE FASTENING AND  
INSTALLATION INFORMATION FOR ES-1  
RATED SNAP-ON COPING



MAXIMUM PANEL ATTACHMENT FASTENER  
SPACING IS 24" O.C. ALL FASTENERS TO  
PENETRATE WOOD 3/4" MIN. AND METAL  
FRAMING 1/2" MIN.



## COPING WITH WOOD SUBSTRATE

• **PROVEN** • **DEPENDABLE** • **SUSTAINABLE** •  
**METAL ENVELOPE SYSTEMS SINCE 1988**  
[WWW.DMIMETALS.COM](http://WWW.DMIMETALS.COM)

Detail:  
**HWP12-V- 04-00**

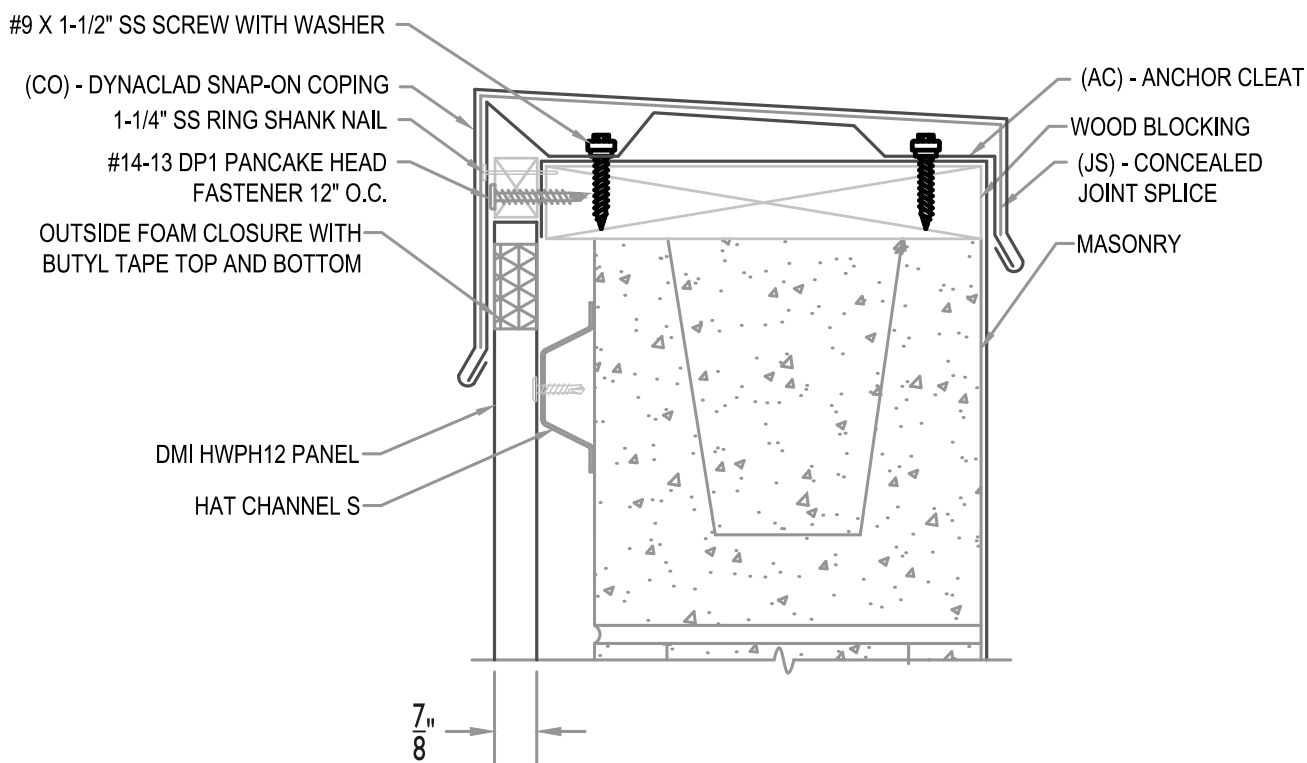
Issue/Rev Date:

01/17

Scale:

3"=1'-0"

SEE DMI DYNACLAD EDGE INSTALLATION  
GUIDE FOR COMPLETE FASTENING AND  
INSTALLATION INFORMATION FOR ES-1  
RATED SNAP-ON COPING



MAXIMUM PANEL ATTACHMENT FASTENER  
SPACING IS 24" O.C. ALL FASTENERS TO  
PENETRATE WOOD 3/4" MIN. AND METAL  
FRAMING 1/2" MIN.



## COPING WITH HAT CHANNEL

• **PROVEN** • **DEPENDABLE** • **SUSTAINABLE** •  
**METAL ENVELOPE SYSTEMS SINCE 1988**

[WWW.DMIMETALS.COM](http://WWW.DMIMETALS.COM)

Detail:

**HWP12-V- 04-01**

Issue/Rev Date:

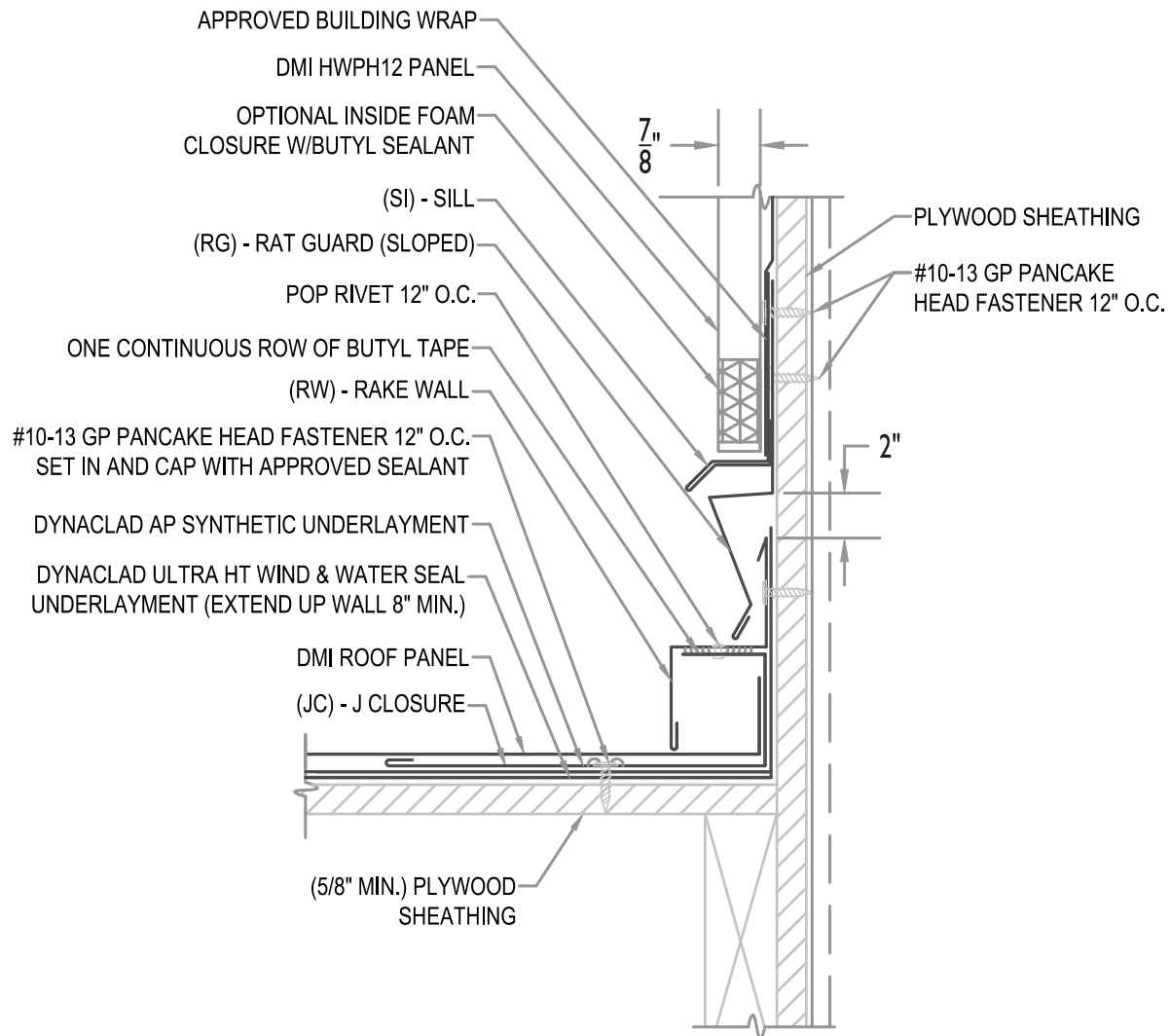
**01/17**

Scale:

**3"=1'-0"**



MAXIMUM PANEL ATTACHMENT FASTENER SPACING IS 24" O.C. ALL FASTENERS TO PENETRATE WOOD 3/4" MIN. AND METAL FRAMING 1/2" MIN.



## RAKE WALL

• **PROVEN** • **DEPENDABLE** • **SUSTAINABLE** •  
**METAL ENVELOPE SYSTEMS SINCE 1988**  
[WWW.DMIMETALS.COM](http://WWW.DMIMETALS.COM)

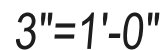
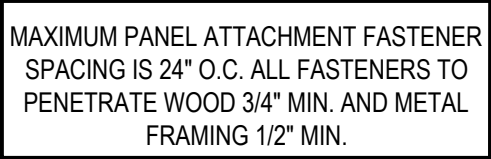
Detail:  
**HWPB12-V- 05-00**

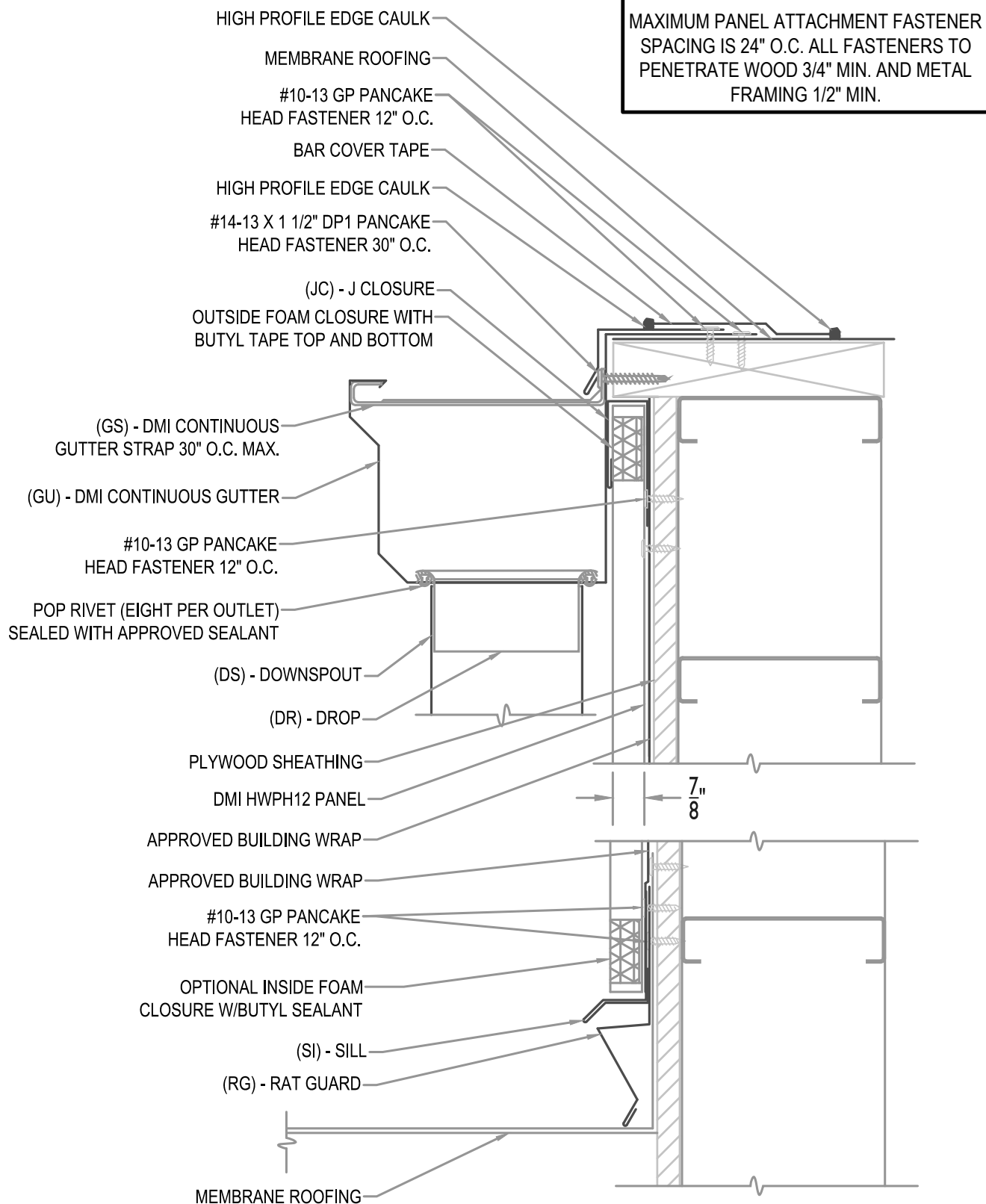
Issue/Rev Date:

01/17

Scale:

3"=1'-0"





## WALL SECTION AT MEMBRANE ROOF

**• PROVEN • DEPENDABLE • SUSTAINABLE •**  
**METAL ENVELOPE SYSTEMS SINCE 1988**

WWW.DMIMETALS.COM

Detail:

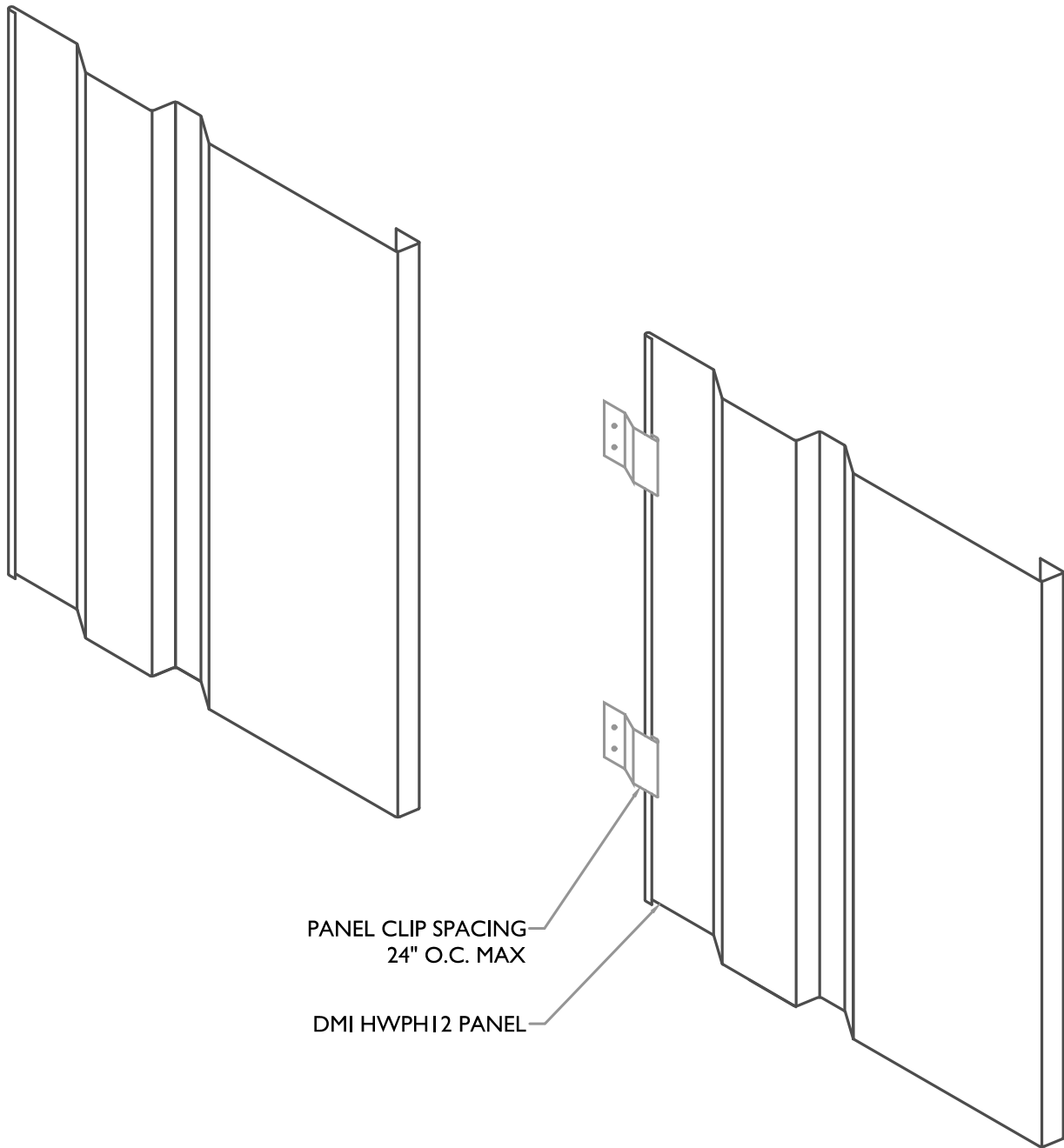
HWP12-V- 07-00

Issue/Rev Date:

01/17

Scale:

3"=1'-0"



## PANEL INSTALLATION

• **PROVEN** • **DEPENDABLE** • **SUSTAINABLE** •  
**METAL ENVELOPE SYSTEMS SINCE 1988**

[WWW.DMIMETALS.COM](http://WWW.DMIMETALS.COM)

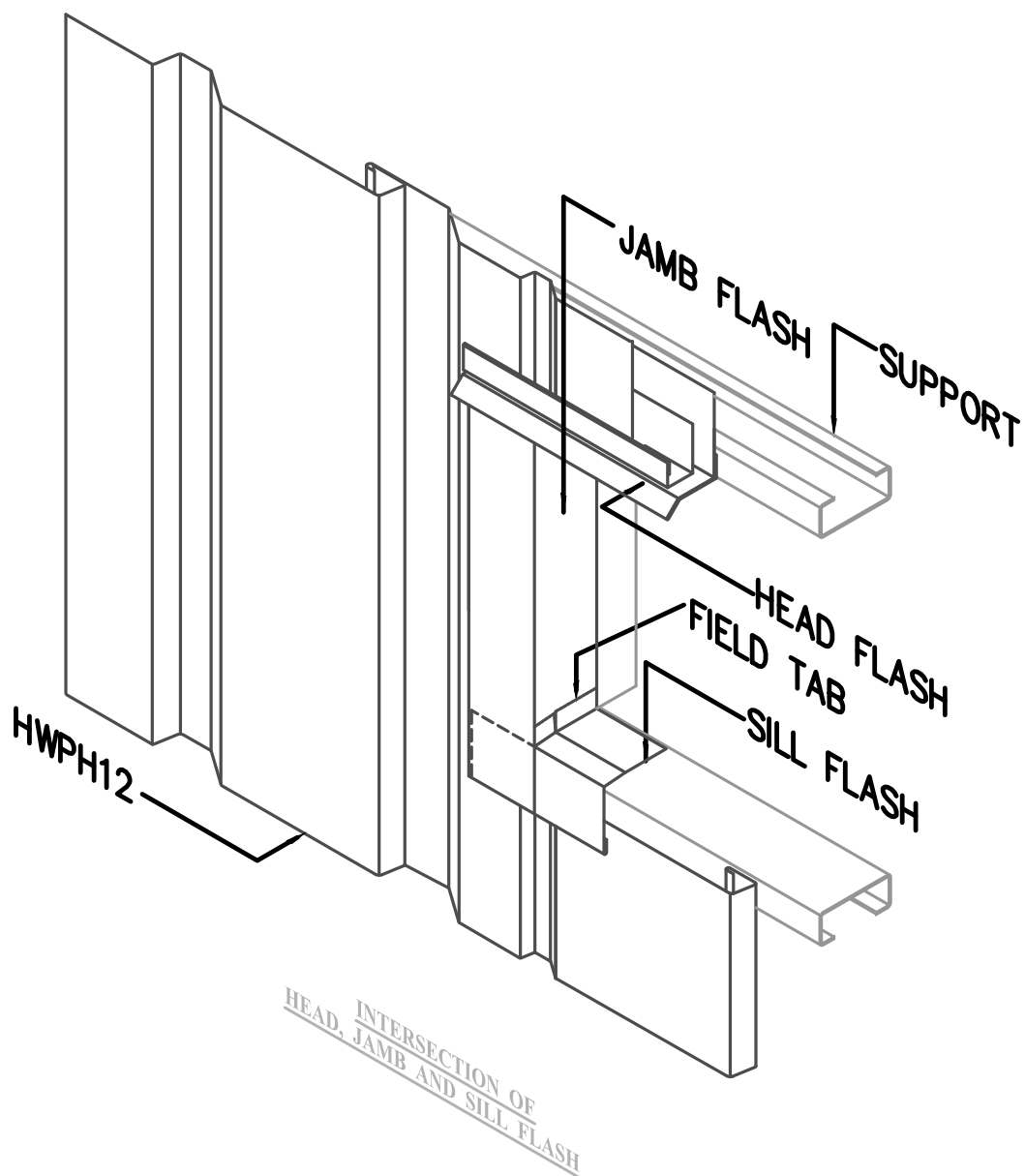
Detail:  
**HWP12-V- 08-00**

Issue/Rev Date:

**01/17**

Scale:

**3"=1'-0"**



## ISO HEAD, SILL AND JAMB

• **PROVEN** • **DEPENDABLE** • **SUSTAINABLE** •  
**METAL ENVELOPE SYSTEMS SINCE 1988**

[WWW.DMIMETALS.COM](http://WWW.DMIMETALS.COM)

Detail:

**HWP12-V- 09-00**

Issue/Rev Date:

**01/17**

Scale:

**3"=1'-0"**