

- HIGH PROFILE EDGE CAULK
- MEMBRANE ROOFING
- #10-13 GP PANCAKE HEAD FASTENER 12" O.C.
- BAR COVER TAPE
- HIGH PROFILE EDGE CAULK
- #14-13 X 1 1/2" DP1 PANCAKE HEAD FASTENER 30" O.C.
- #10-13 GP PANCAKE HEAD FASTENER 12" O.C.

MAXIMUM PANEL ATTACHMENT FASTENER SPACING IS 24" O.C. ALL FASTENERS TO PENETRATE WOOD 3/4" MIN. AND METAL FRAMING 1/2" MIN.

- (GS) - DMI CONTINUOUS GUTTER STRAP 30" O.C. MAX.
- (GU) - DMI CONTINUOUS GUTTER
- POP RIVET (EIGHT PER OUTLET) SEALED WITH APPROVED SEALANT

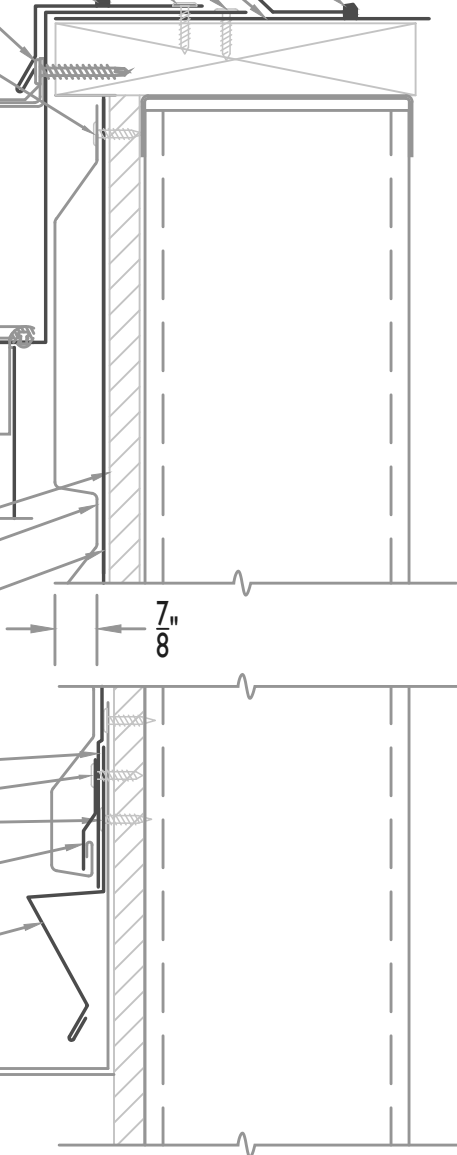
- (DS) - DOWNSPOUT
- (DR) - DROP

- PLYWOOD SHEATHING
- DMI HWPC12 PANEL
- APPROVED WEATHER BARRIER

- APPROVED WEATHER BARRIER
- #10-13 GP PANCAKE HEAD FASTENER 12" O.C.

- (CSC) - CONTINUOUS STARTER CLEAT
- (RG) - RAT GUARD

- MEMBRANE ROOFING



WALL SECTION AT MEMBRANE ROOF

• **PROVEN** • **DEPENDABLE** • **SUSTAINABLE** •
METAL ENVELOPE SYSTEMS SINCE 1988
 WWW.DMIMETALS.COM

Detail:
HWPC12-H-07-00
 Issue/Rev Date: **04/19** Scale: **3"=1'-0"**