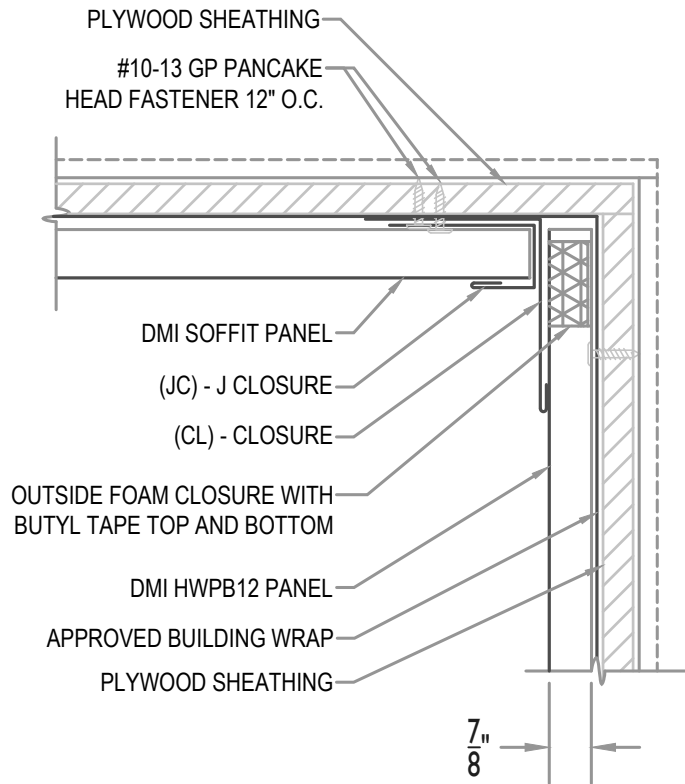


MAXIMUM PANEL ATTACHMENT FASTENER
SPACING IS 24" O.C. ALL FASTENERS TO
PENETRATE WOOD 3/4" MIN. AND METAL
FRAMING 1/2" MIN.



$\frac{7}{8}$ "



SOFFIT TO WALL PANEL

• **PROVEN** • **DEPENDABLE** • **SUSTAINABLE** •
METAL ENVELOPE SYSTEMS SINCE 1988
WWW.DMIMETALS.COM

Detail:
HWPB12-V- 01-00

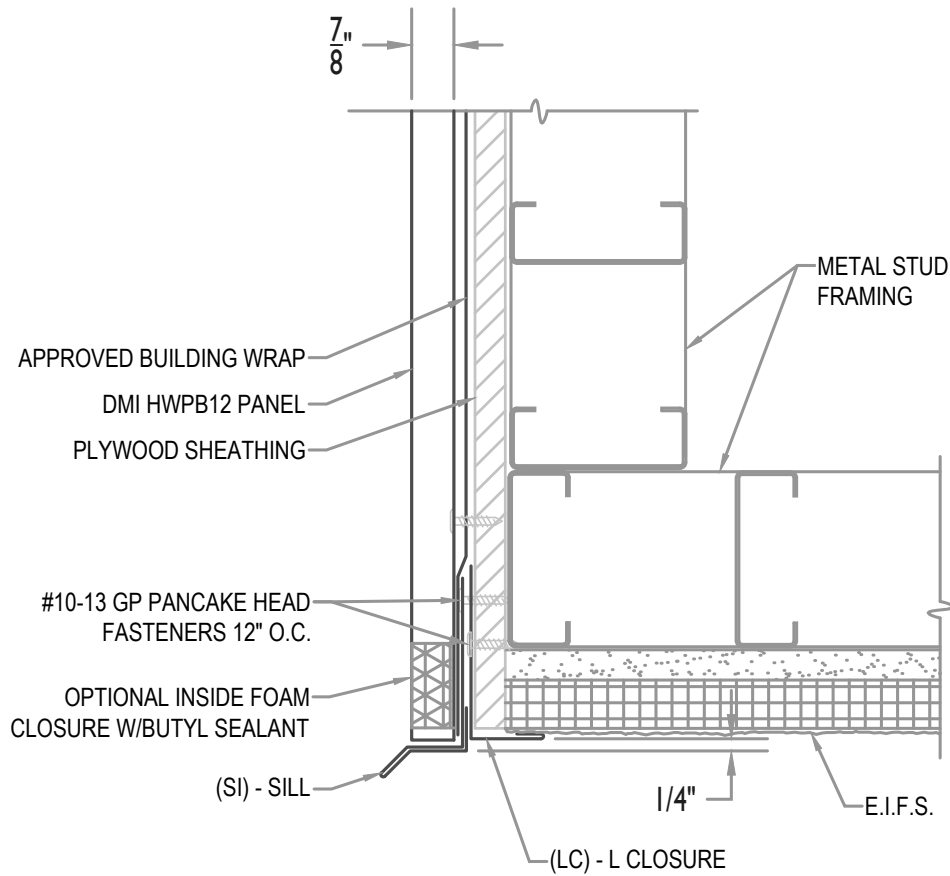
Issue/Rev Date:

01/17

Scale:

3"=1'-0"

MAXIMUM PANEL ATTACHMENT FASTENER
SPACING IS 24" O.C. ALL FASTENERS TO
PENETRATE WOOD 3/4" MIN. AND METAL
FRAMING 1/2" MIN.



WALL PANEL W/ (EIFS SOFFIT)

• PROVEN • DEPENDABLE • SUSTAINABLE •

METAL ENVELOPE SYSTEMS SINCE 1988

WWW.DMIMETALS.COM

Detail:
HWPB12-V- 02-00

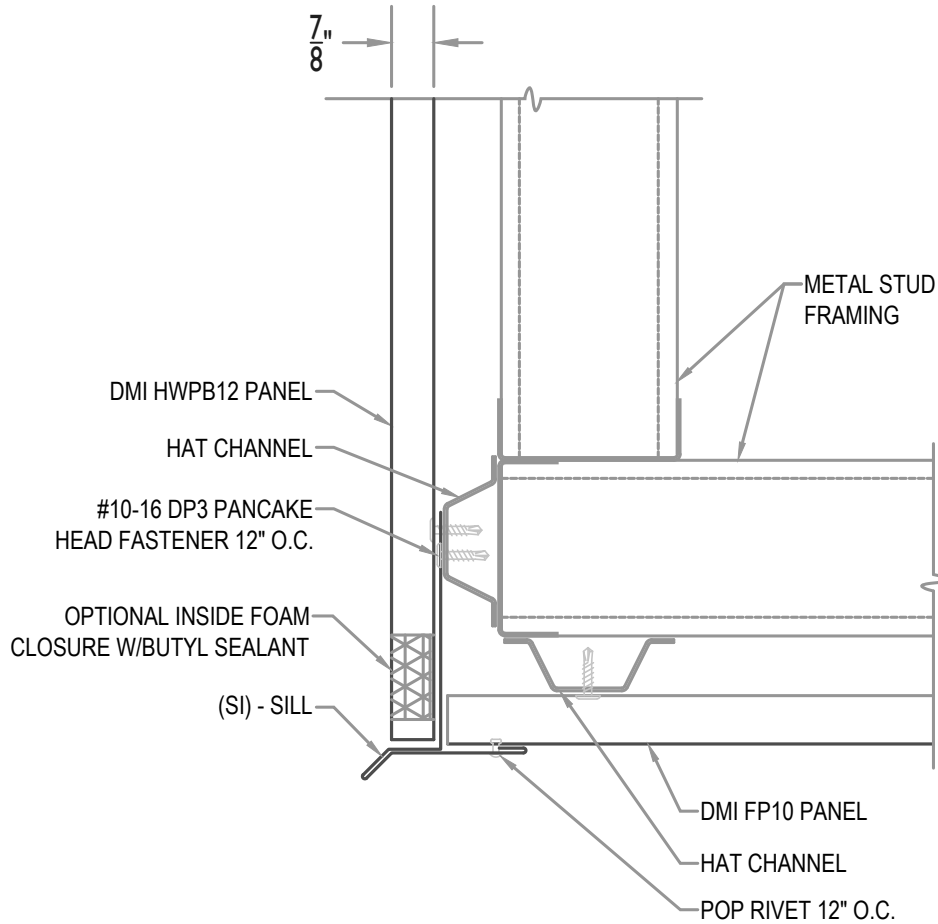
Issue/Rev Date:

01/17

Scale:

3"=1'-0"

MAXIMUM PANEL ATTACHMENT FASTENER
SPACING IS 24" O.C. ALL FASTENERS TO
PENETRATE WOOD 3/4" MIN. AND METAL
FRAMING 1/2" MIN.



WALL PANEL W/ (PANEL SOFFIT)

• PROVEN • DEPENDABLE • SUSTAINABLE •

METAL ENVELOPE SYSTEMS SINCE 1988

WWW.DMIMETALS.COM

Detail:
HWPB12-V- 02-01

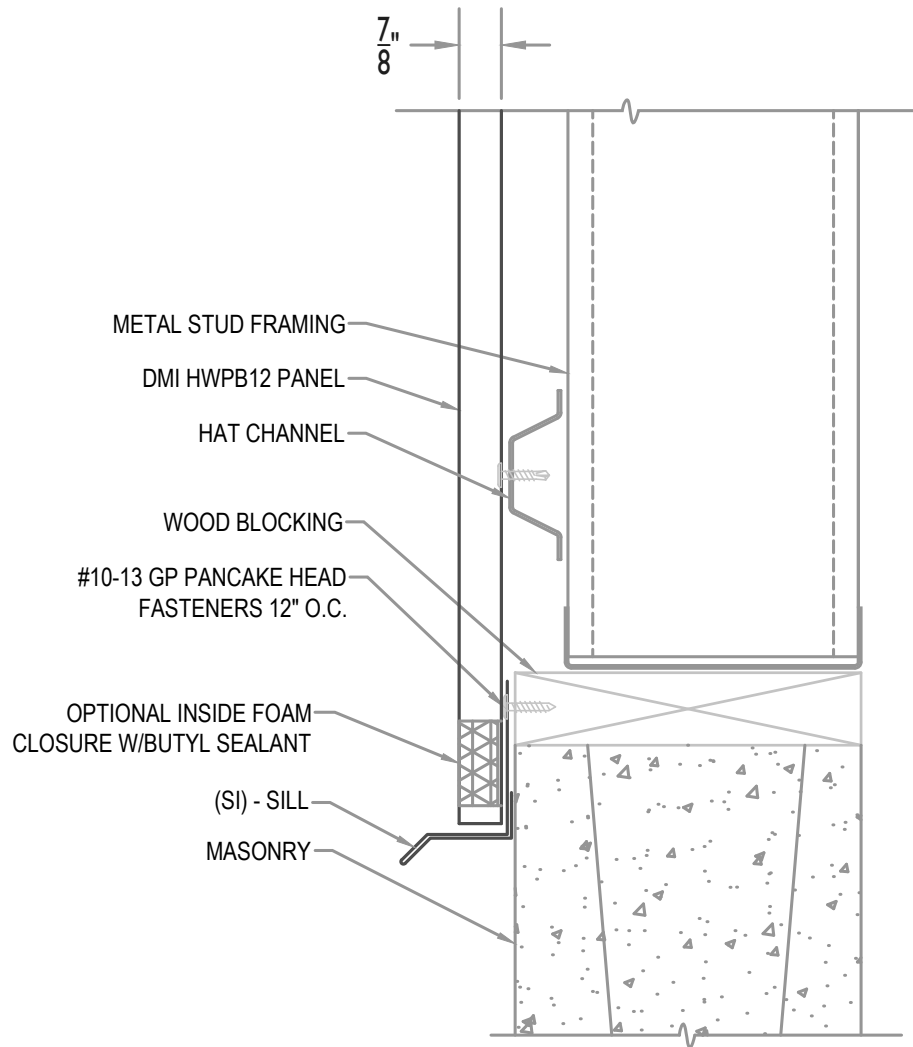
Issue/Rev Date:

01/17

Scale:

3"=1'-0"

MAXIMUM PANEL ATTACHMENT FASTENER
SPACING IS 24" O.C. ALL FASTENERS TO
PENETRATE WOOD 3/4" MIN. AND METAL
FRAMING 1/2" MIN.



WALL PANEL W/ SILL (AT BLOCK)

• **PROVEN** • **DEPENDABLE** • **SUSTAINABLE** •
METAL ENVELOPE SYSTEMS SINCE 1988

WWW.DMIMETALS.COM

Detail HWPB12-V-
02-02

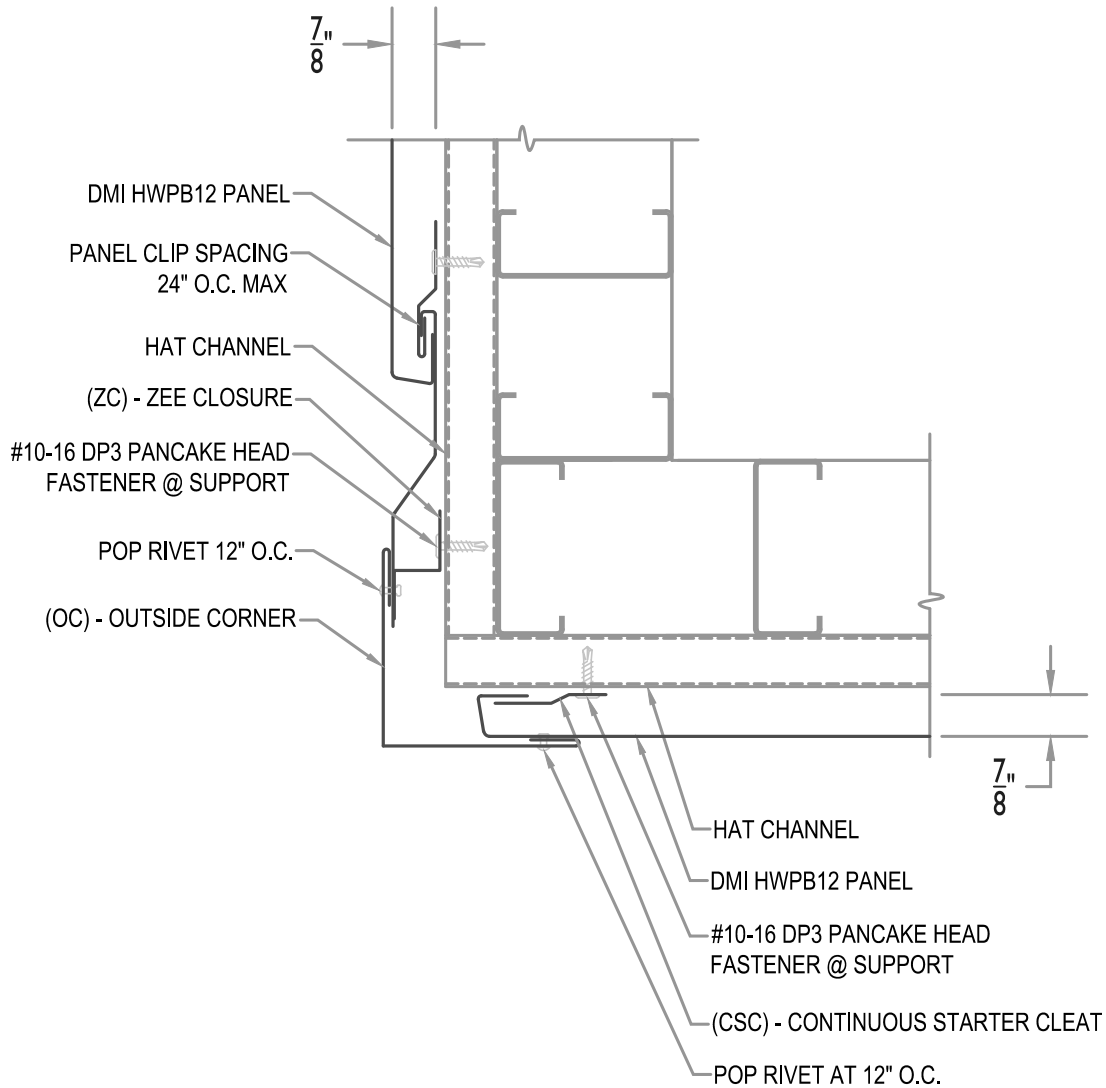
Issue/Rev Date:

01/17

Scale:

3"=1'-0"

MAXIMUM PANEL ATTACHMENT FASTENER
SPACING IS 24" O.C. ALL FASTENERS TO
PENETRATE WOOD 3/4" MIN. AND METAL
FRAMING 1/2" MIN.



OUTSIDE CORNER

• **PROVEN** • **DEPENDABLE** • **SUSTAINABLE** •
METAL ENVELOPE SYSTEMS SINCE 1988
WWW.DMIMETALS.COM

Detail:
HWPB12-V- 03-00

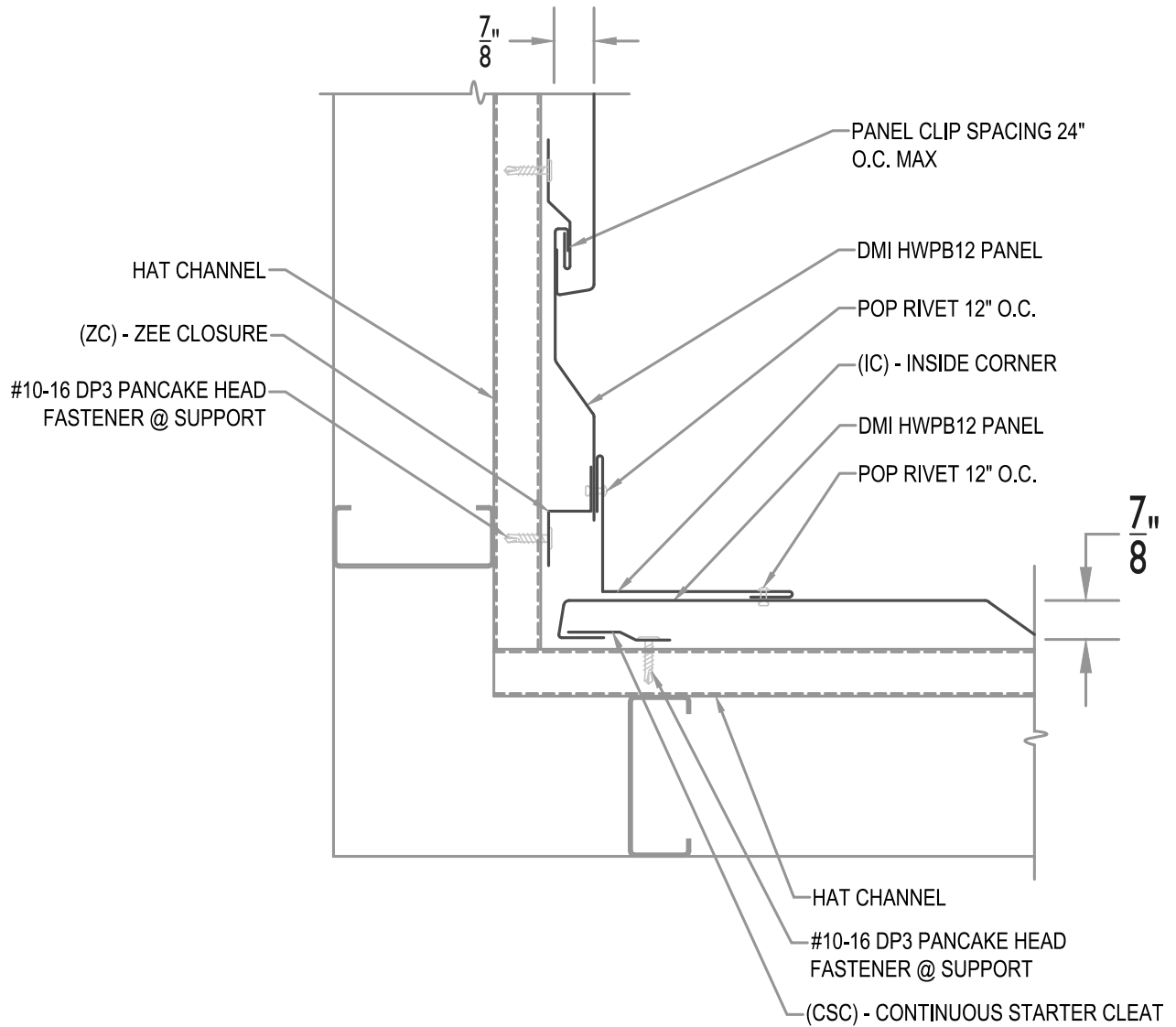
Issue/Rev Date:

01/17

Scale:

3"=1'-0"

MAXIMUM PANEL ATTACHMENT FASTENER
SPACING IS 24" O.C. ALL FASTENERS TO
PENETRATE WOOD 3/4" MIN. AND METAL
FRAMING 1/2" MIN.



INSIDE CORNER

• **PROVEN** • **DEPENDABLE** • **SUSTAINABLE** •
METAL ENVELOPE SYSTEMS SINCE 1988
WWW.DMIMETALS.COM

Detail **HWPB12-V-**
03-01

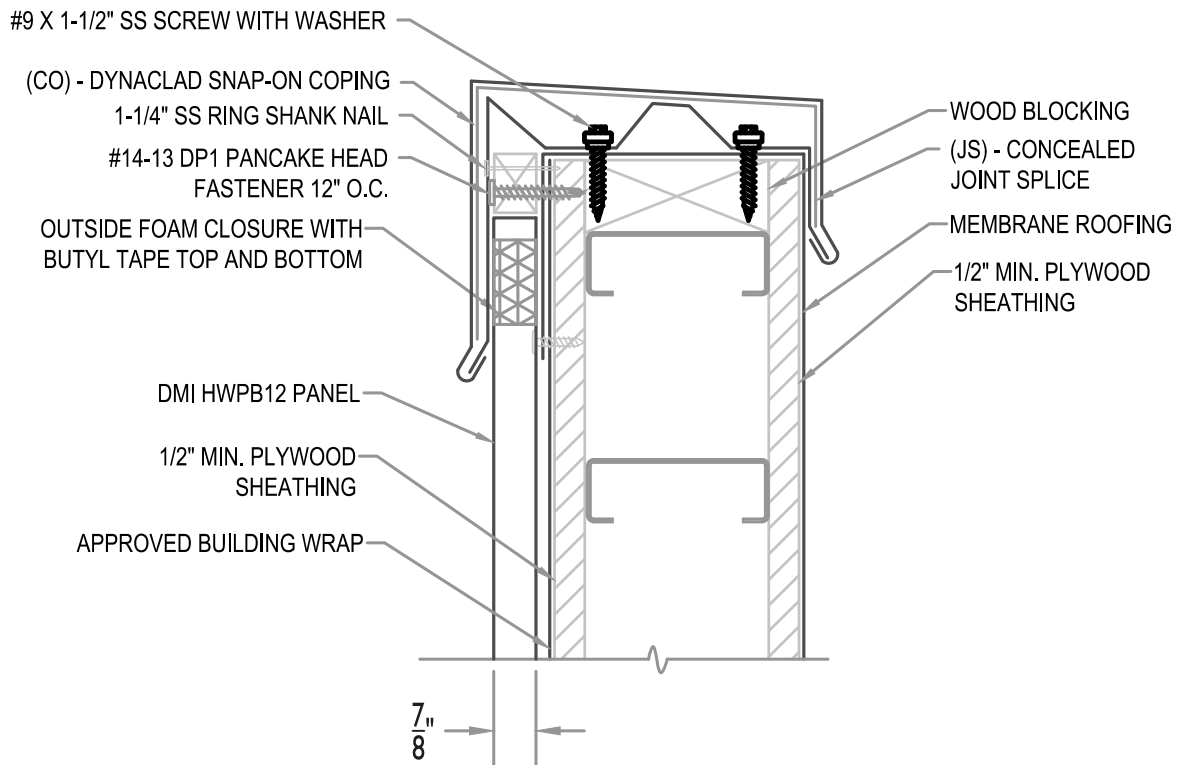
Issue/Rev Date:

Scale:

01/17

3"=1'-0"

SEE DMI DYNACLAD EDGE INSTALLATION
GUIDE FOR COMPLETE FASTENING AND
INSTALLATION INFORMATION FOR ES-1
RATED SNAP-ON COPING



MAXIMUM PANEL ATTACHMENT FASTENER
SPACING IS 24" O.C. ALL FASTENERS TO
PENETRATE WOOD 3/4" MIN. AND METAL
FRAMING 1/2" MIN.



COPING WITH WOOD SUBSTRATE

• **PROVEN** • **DEPENDABLE** • **SUSTAINABLE** •
METAL ENVELOPE SYSTEMS SINCE 1988
WWW.DMIMETALS.COM

Detail:
HWPB12-V- 04-00

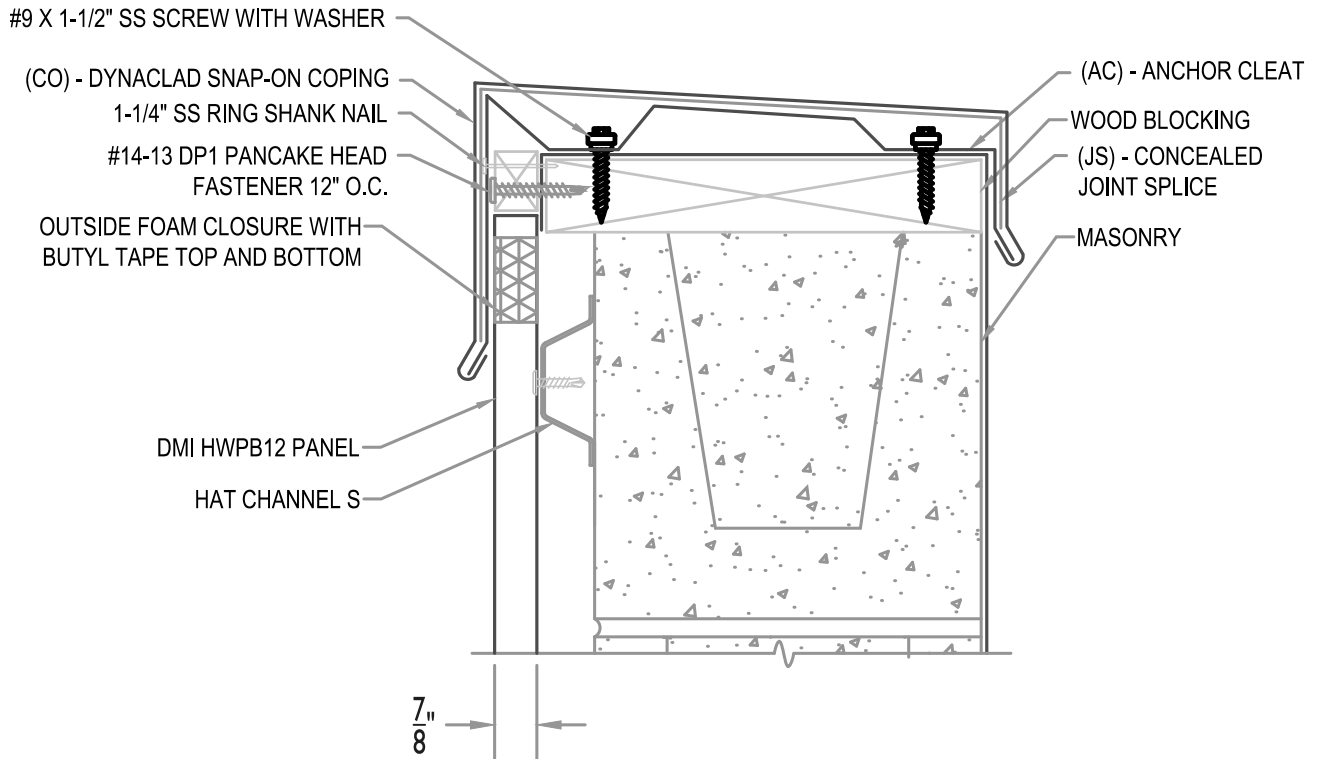
Issue/Rev Date:

01/17

Scale:

3"=1'-0"

SEE DMI DYNACLAD EDGE INSTALLATION
GUIDE FOR COMPLETE FASTENING AND
INSTALLATION INFORMATION FOR ES-1
RATED SNAP-ON COPING



MAXIMUM PANEL ATTACHMENT FASTENER
SPACING IS 24" O.C. ALL FASTENERS TO
PENETRATE WOOD 3/4" MIN. AND METAL
FRAMING 1/2" MIN.



COPING WITH HAT CHANNEL

• **PROVEN** • **DEPENDABLE** • **SUSTAINABLE** •
METAL ENVELOPE SYSTEMS SINCE 1988
WWW.DMIMETALS.COM

Detail:

HWPB12-V- 04-01

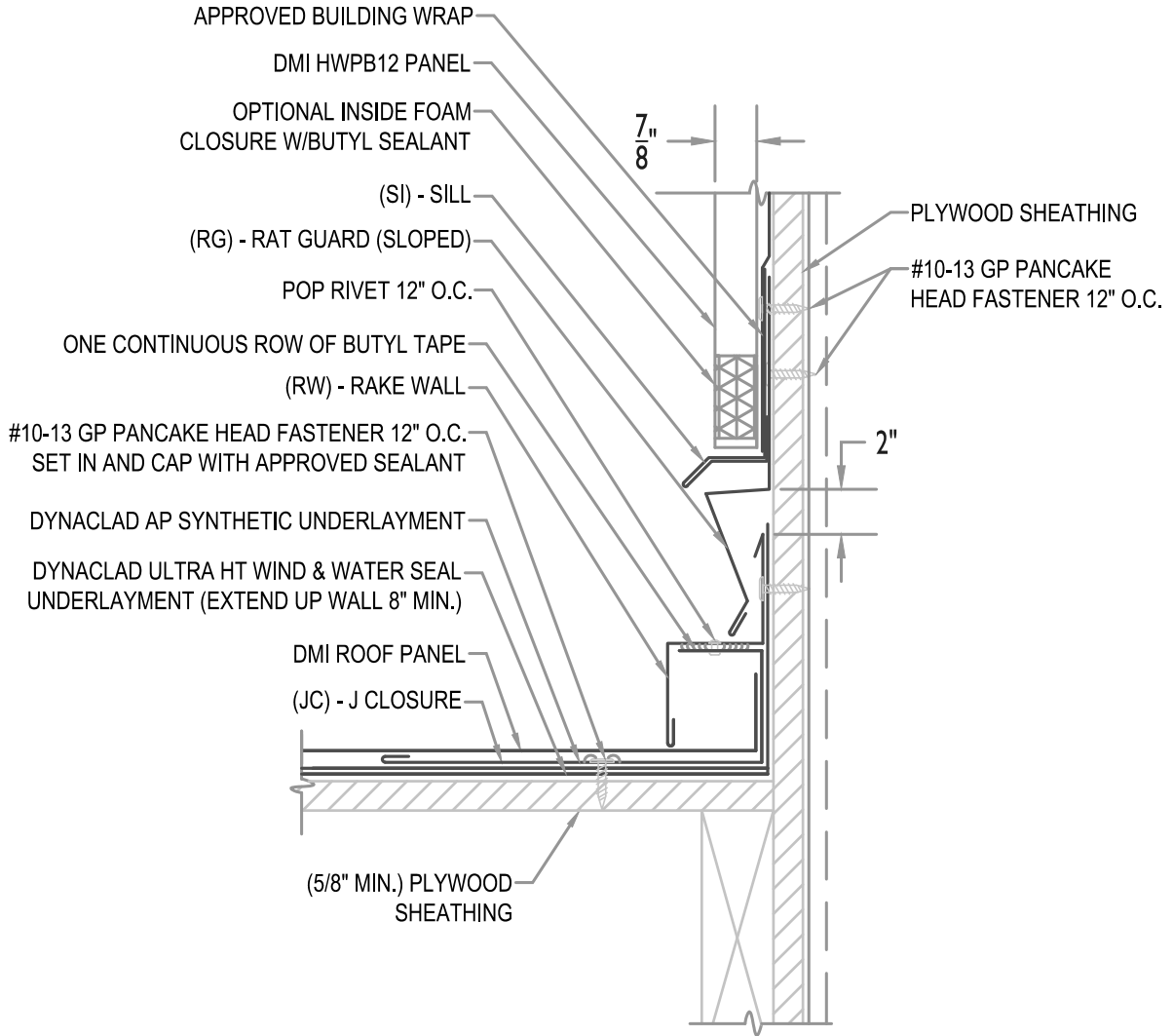
Issue/Rev Date:

01/17

Scale:

3"=1'-0"

MAXIMUM PANEL ATTACHMENT FASTENER SPACING IS 24" O.C. ALL FASTENERS TO PENETRATE WOOD 3/4" MIN. AND METAL FRAMING 1/2" MIN.



RAKE WALL

• **PROVEN** • **DEPENDABLE** • **SUSTAINABLE** •
METAL ENVELOPE SYSTEMS SINCE 1988
WWW.DMIMETALS.COM

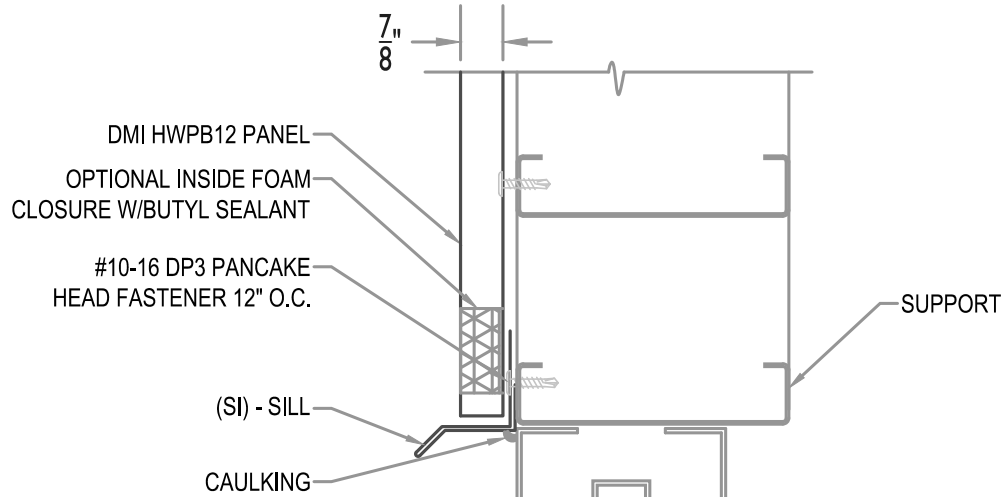
Detail:
HWPB12-V- 05-00

Issue/Rev Date:

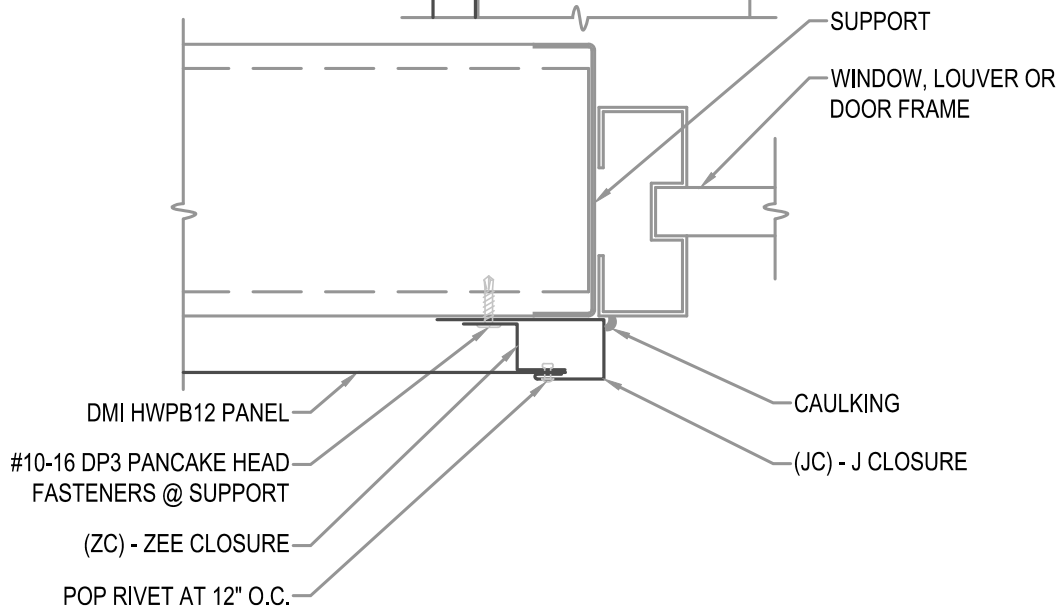
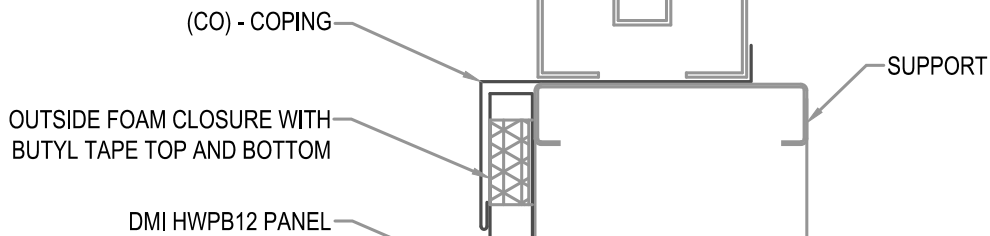
01/17

Scale:

3"=1'-0"



MAXIMUM PANEL ATTACHMENT FASTENER SPACING IS 24" O.C. ALL FASTENERS TO PENETRATE WOOD 3/4" MIN. AND METAL FRAMING 1/2" MIN.



OPENING HEAD, SILL AND JAMB

• **PROVEN** • **DEPENDABLE** • **SUSTAINABLE** •
METAL ENVELOPE SYSTEMS SINCE 1988
WWW.DMIMETALS.COM

Detail:

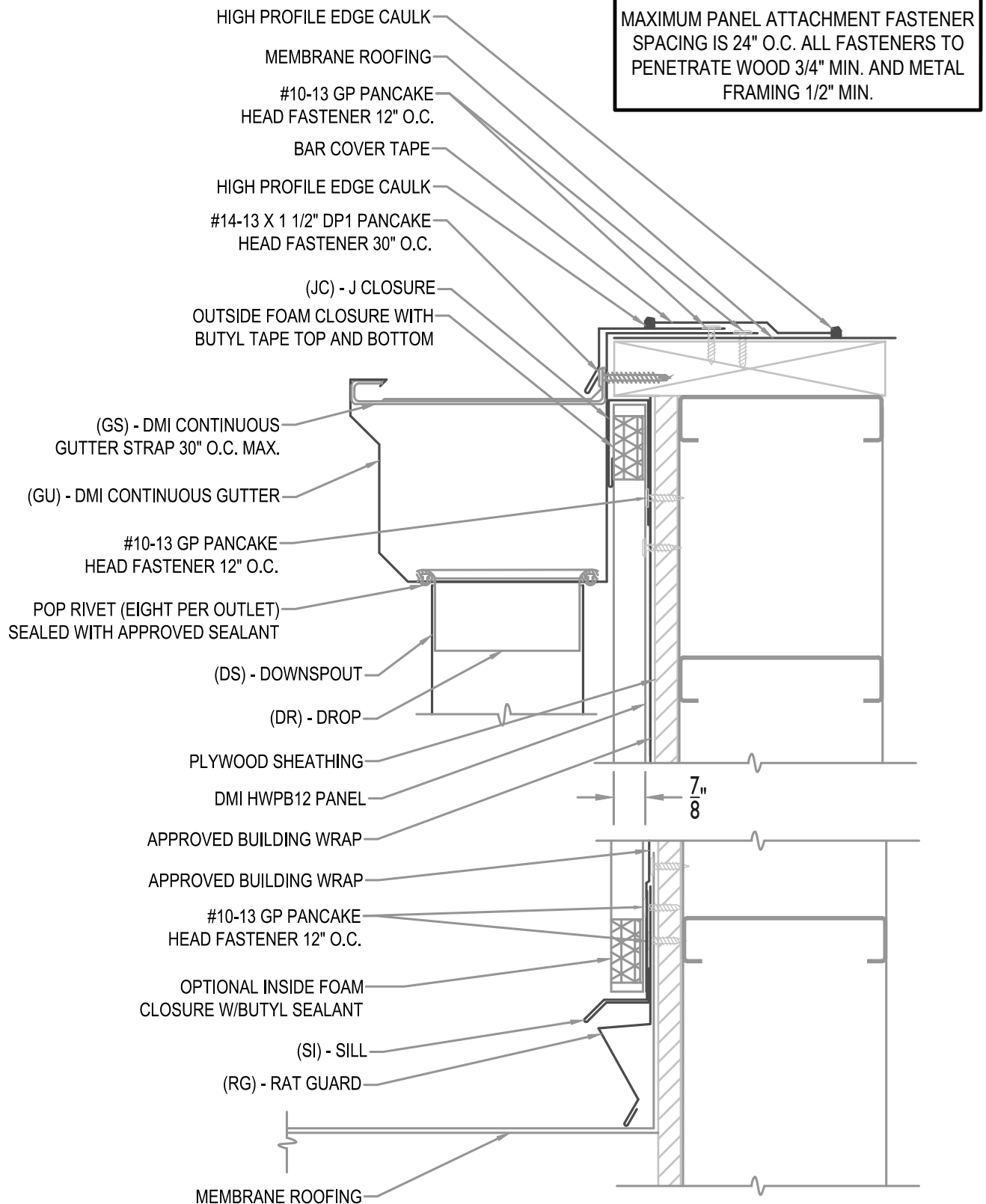
HWPB12-V- 06-00

Issue/Rev Date:

01/17

Scale:

3"=1'-0"



WALL SECTION AT MEMBRANE ROOF

• PROVEN • DEPENDABLE • SUSTAINABLE •
METAL ENVELOPE SYSTEMS SINCE 1988

WWW.DMIMETALS.COM

Detail:

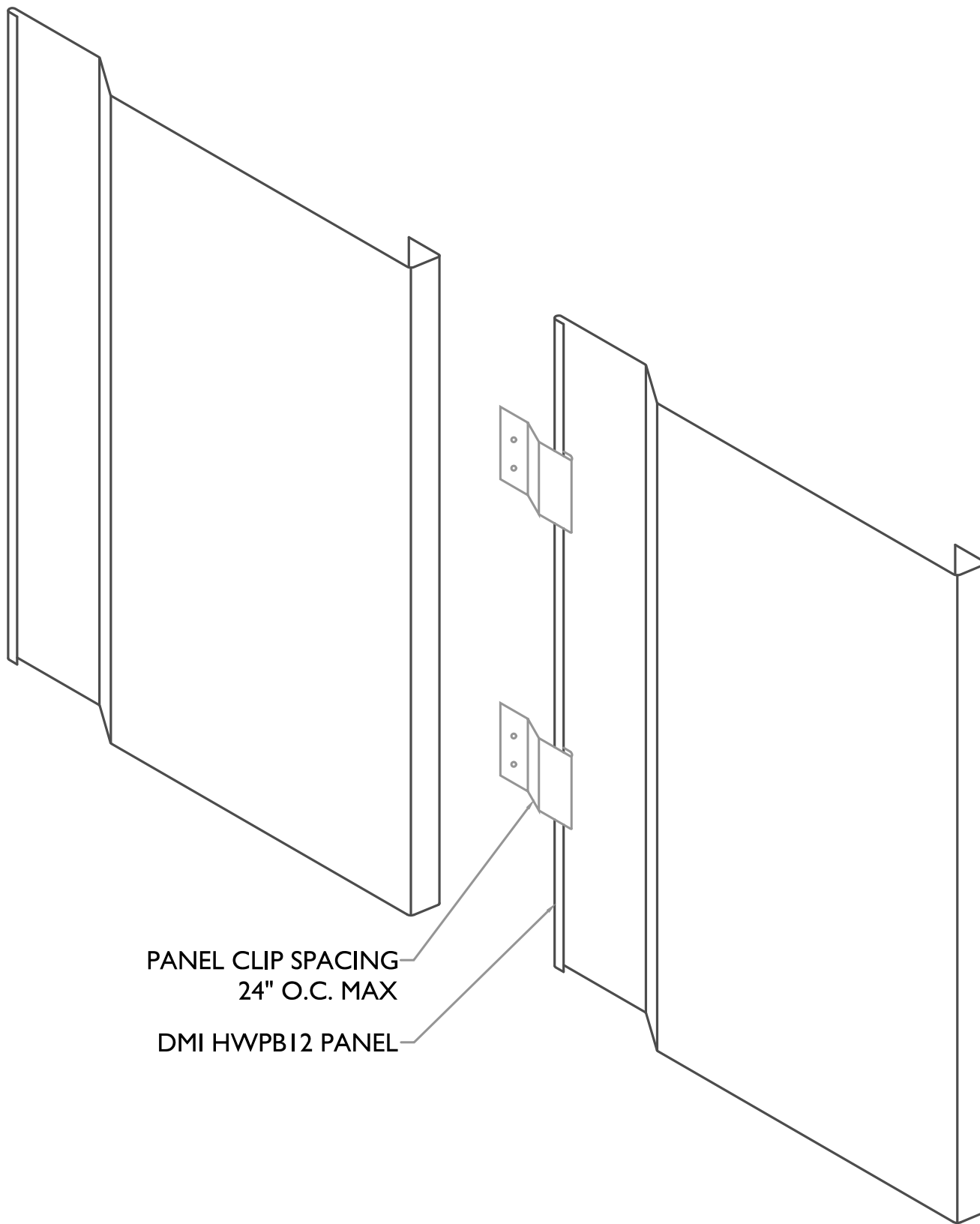
HWPB12-V- 07-00

Issue/Rev Date:

01/17

Scale:

3"=1'-0"



PANEL CLIP SPACING
24" O.C. MAX

DMI HWPB12 PANEL



PANEL INSTALLATION

• **PROVEN** • **DEPENDABLE** • **SUSTAINABLE** •
METAL ENVELOPE SYSTEMS SINCE 1988

WWW.DMIMETALS.COM

Detail:

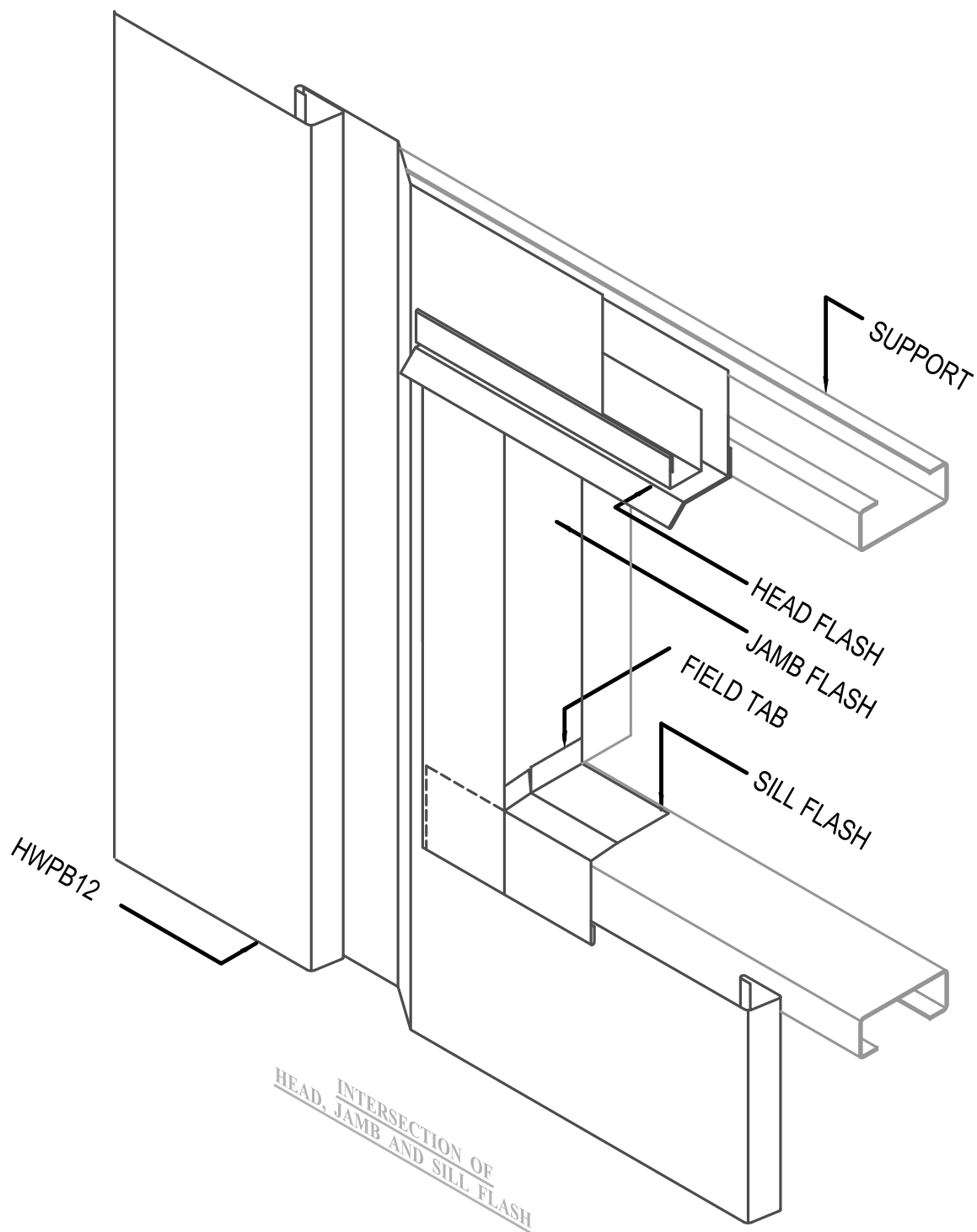
HWPB12-V- 08-00

Issue/Rev Date:

01/17

Scale:

3"=1'-0"



ISO HEAD, SILL AND JAMB

• **PROVEN** • **DEPENDABLE** • **SUSTAINABLE** •
METAL ENVELOPE SYSTEMS SINCE 1988

WWW.DMIMETALS.COM

Detail:

HWPB12-V- 09-00

Issue/Rev Date:

01/17

Scale:

3"=1'-0"