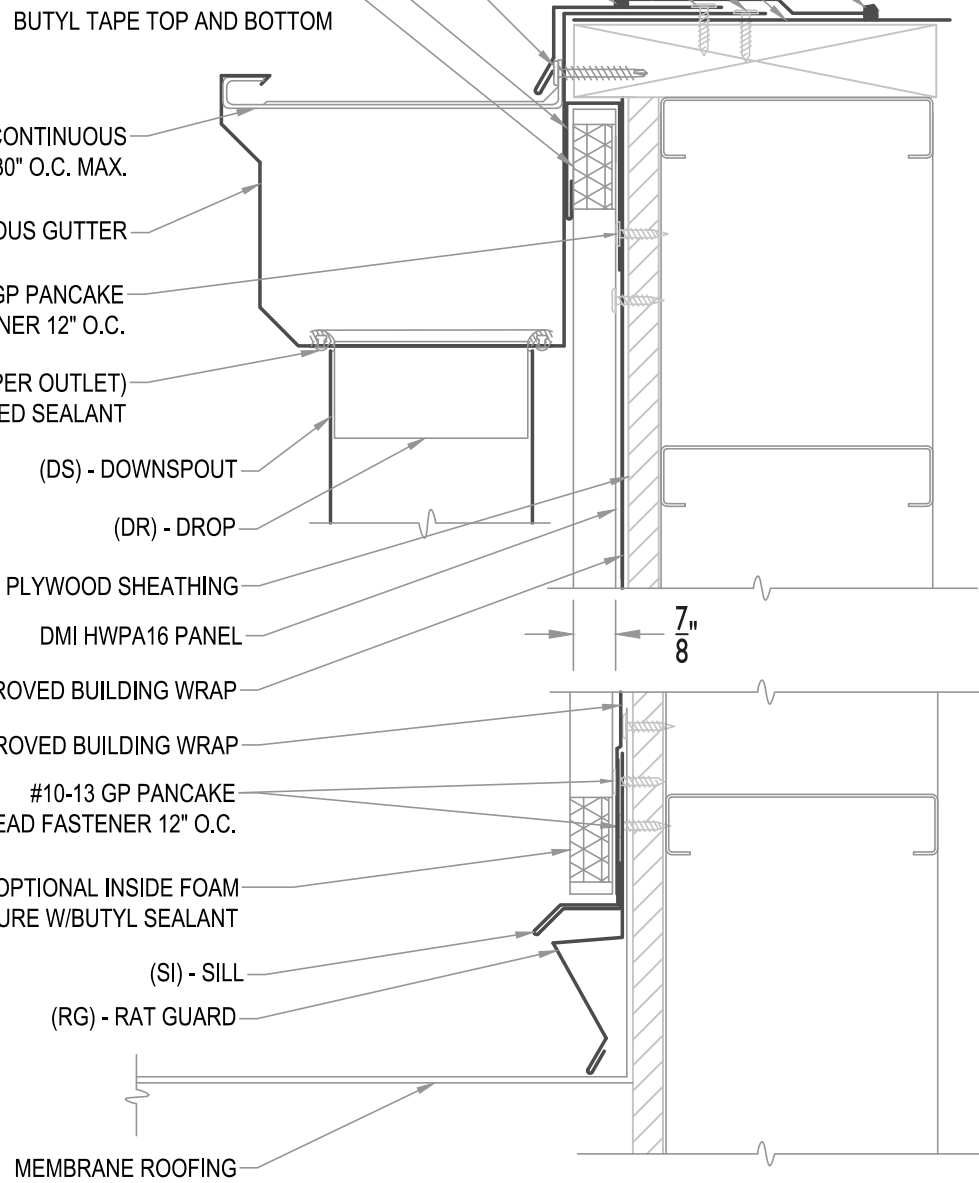


- HIGH PROFILE EDGE CAULK
- MEMBRANE ROOFING
- #10-13 GP PANCAKE HEAD FASTENER 12" O.C.
- BAR COVER TAPE
- HIGH PROFILE EDGE CAULK
- #14-13 X 1 1/2" DP1 PANCAKE HEAD FASTENER 30" O.C.
- (JC) - J CLOSURE
- OUTSIDE FOAM CLOSURE WITH BUTYL TAPE TOP AND BOTTOM

MAXIMUM PANEL ATTACHMENT FASTENER SPACING IS 24" O.C. ALL FASTENERS TO PENETRATE WOOD 3/4" MIN. AND METAL FRAMING 1/2" MIN.

- (GS) - DMI CONTINUOUS GUTTER STRAP 30" O.C. MAX.
- (GU) - DMI CONTINUOUS GUTTER
- #10-13 GP PANCAKE HEAD FASTENER 12" O.C.
- POP RIVET (EIGHT PER OUTLET) SEALED WITH APPROVED SEALANT
- (DS) - DOWNSPOUT
- (DR) - DROP
- PLYWOOD SHEATHING
- DMI HHPA16 PANEL
- APPROVED BUILDING WRAP
- APPROVED BUILDING WRAP
- #10-13 GP PANCAKE HEAD FASTENER 12" O.C.
- OPTIONAL INSIDE FOAM CLOSURE W/BUTYL SEALANT
- (SI) - SILL
- (RG) - RAT GUARD
- MEMBRANE ROOFING



WALL SECTION AT MEMBRANE ROOF

• PROVEN • DEPENDABLE • SUSTAINABLE •
 METAL ENVELOPE SYSTEMS SINCE 1988
 WWW.DMIMETALS.COM

Detail:
 HHPA16-V- 07-00

Issue/Rev Date: 01/17
 Scale: 3"=1'-0"