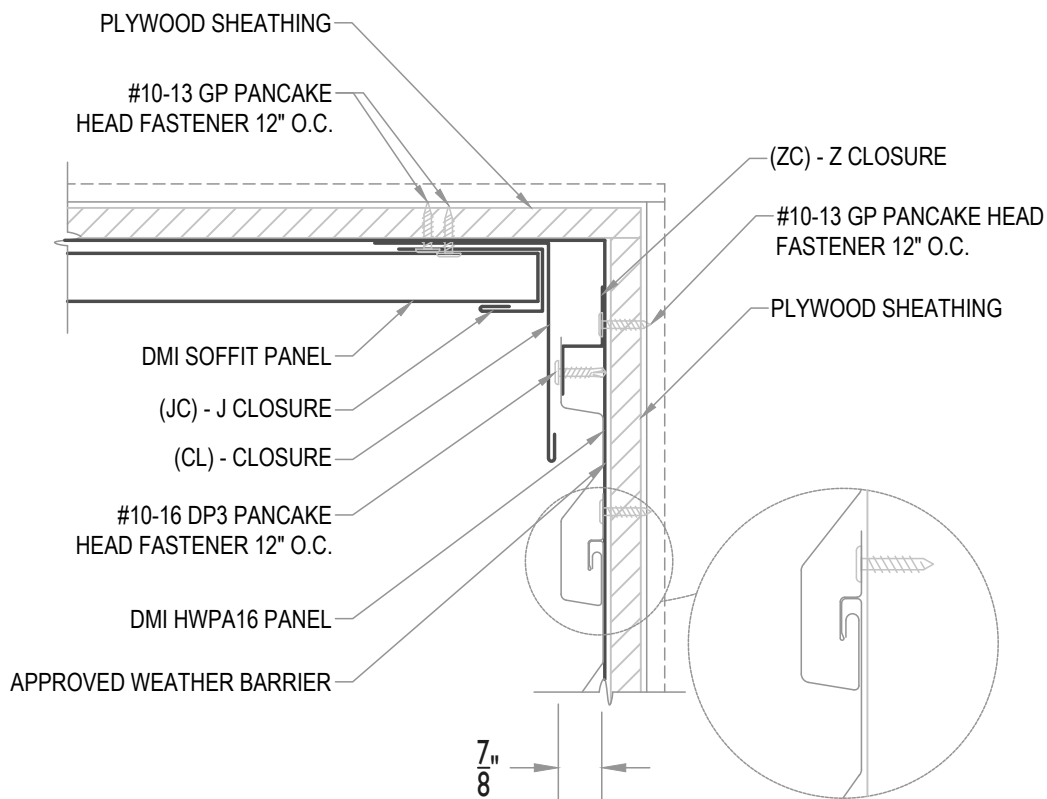


MAXIMUM PANEL ATTACHMENT FASTENER SPACING IS 24" O.C. ALL FASTENERS TO PENETRATE WOOD 3/4" MIN. AND METAL FRAMING 1/2" MIN.

ALTERNATE WITH Z CLOSURE



SOFFIT TO WALL PANEL

• **PROVEN** • **DEPENDABLE** • **SUSTAINABLE** •

**METAL ENVELOPE SYSTEMS SINCE 1988**

WWW.DMIMETALS.COM

Detail:

**HWPA16-H-01-00**

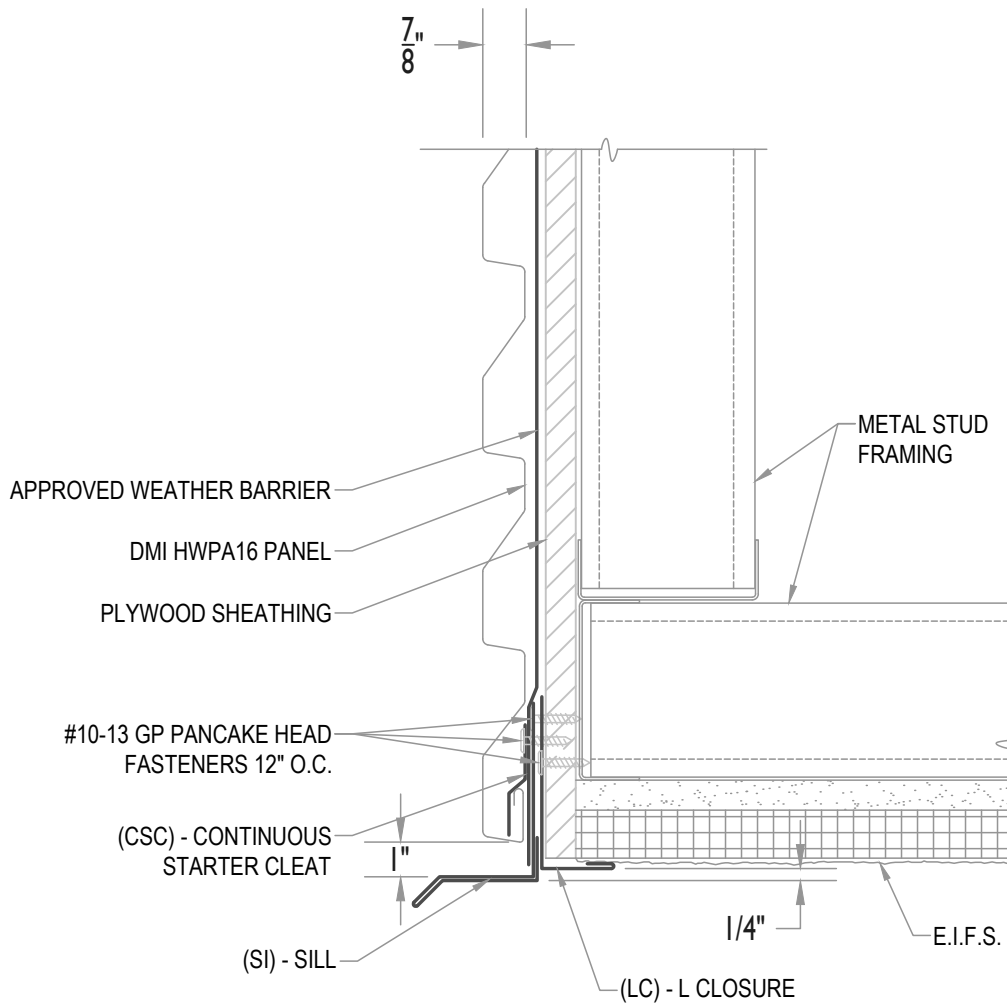
Issue/Rev Date:

04/19

Scale:

3"=1'-0"

MAXIMUM PANEL ATTACHMENT FASTENER SPACING IS 24" O.C. ALL FASTENERS TO PENETRATE WOOD 3/4" MIN. AND METAL FRAMING 1/2" MIN.



WALL PANEL W/ (EIFS SOFFIT)

• **PROVEN** • **DEPENDABLE** • **SUSTAINABLE** •

**METAL ENVELOPE SYSTEMS SINCE 1988**

WWW.DMIMETALS.COM

Detail:

**HWP16-H-02-00**

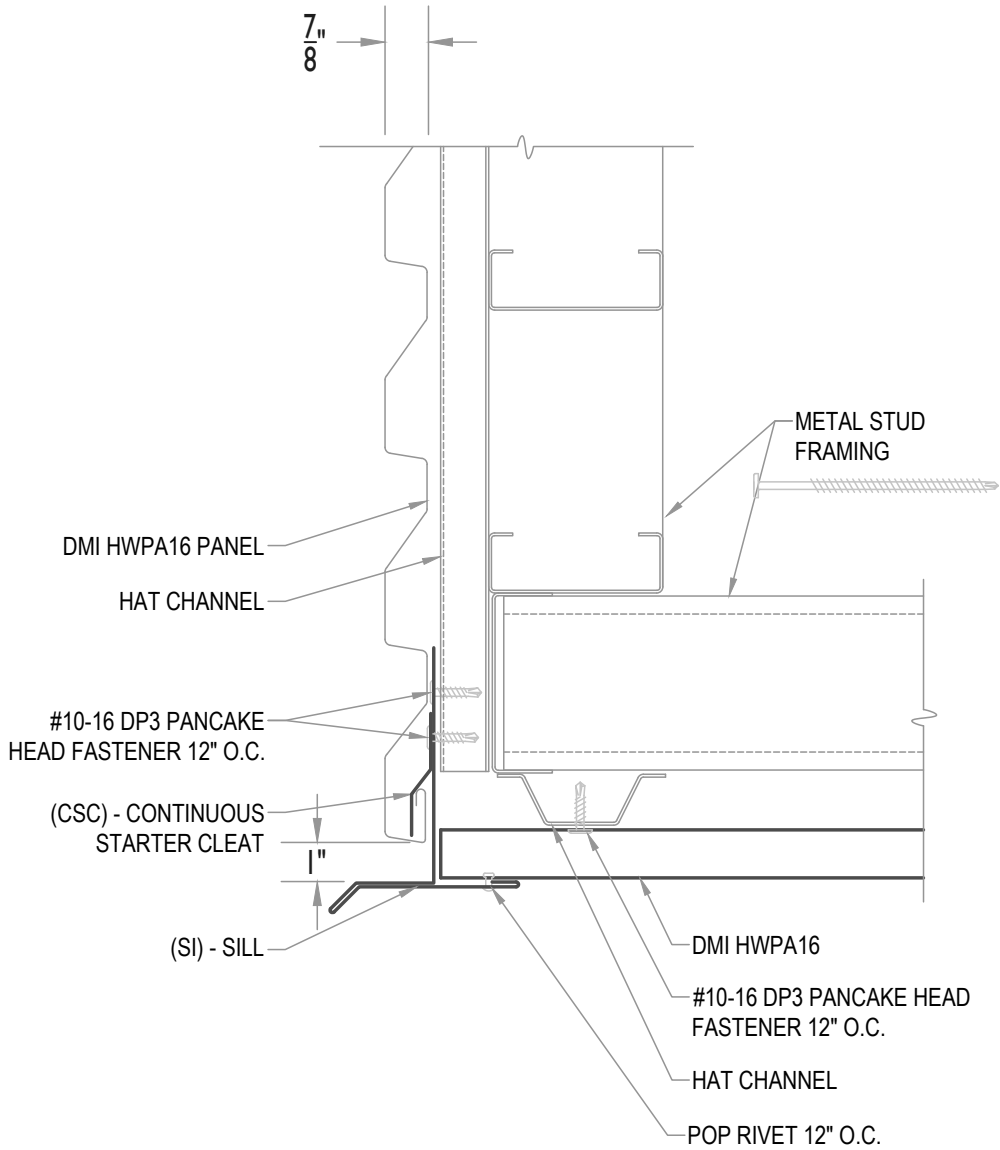
Issue/Rev Date:

**04/19**

Scale:

**3"=1'-0"**

MAXIMUM PANEL ATTACHMENT FASTENER SPACING IS 24" O.C. ALL FASTENERS TO PENETRATE WOOD 3/4" MIN. AND METAL FRAMING 1/2" MIN.



WALL PANEL W/ (PANEL SOFFIT)

• PROVEN • DEPENDABLE • SUSTAINABLE •

METAL ENVELOPE SYSTEMS SINCE 1988

WWW.DMIMETALS.COM

Detail:

HWP A16-H-02-01

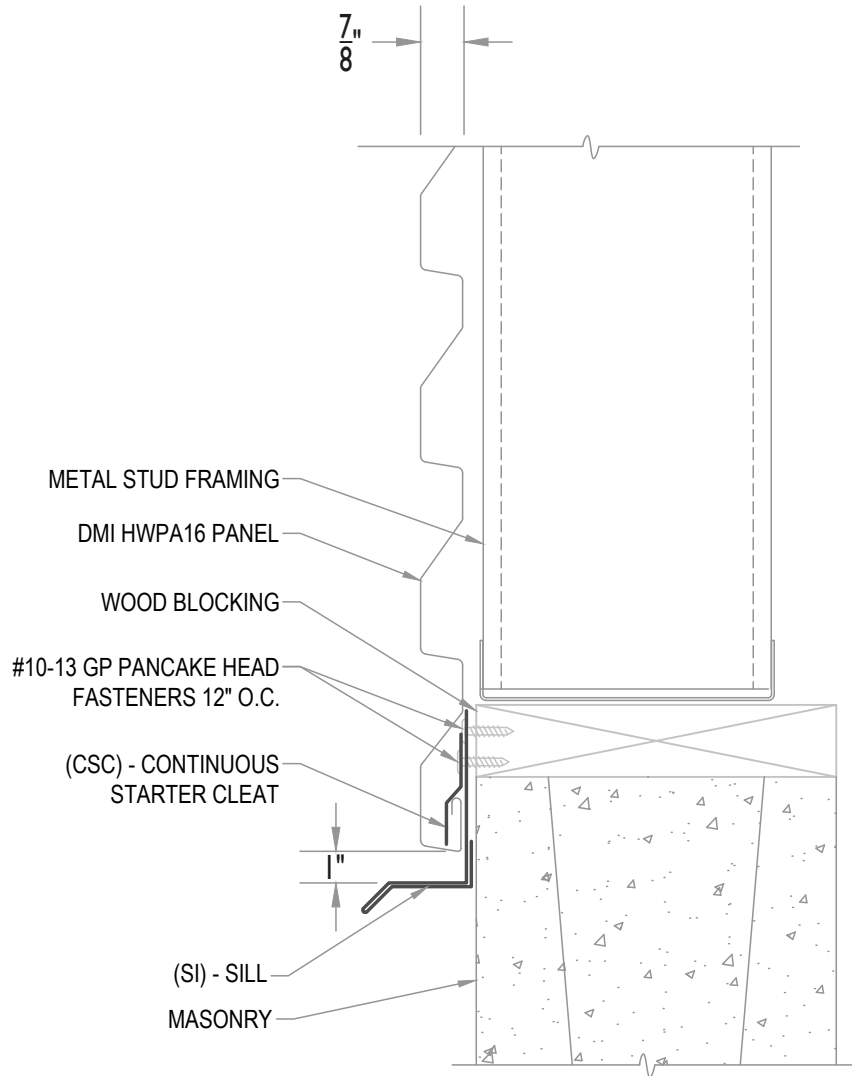
Issue/Rev Date:

04/19

Scale:

3"=1'-0"

MAXIMUM PANEL ATTACHMENT FASTENER SPACING IS 24" O.C. ALL FASTENERS TO PENETRATE WOOD 3/4" MIN. AND METAL FRAMING 1/2" MIN.



WALL PANEL W/ SILL (AT BLOCK)

• **PROVEN** • **DEPENDABLE** • **SUSTAINABLE** •

**METAL ENVELOPE SYSTEMS SINCE 1988**

WWW.DMIMETALS.COM

Detail:

**HWPA16-H-02-02**

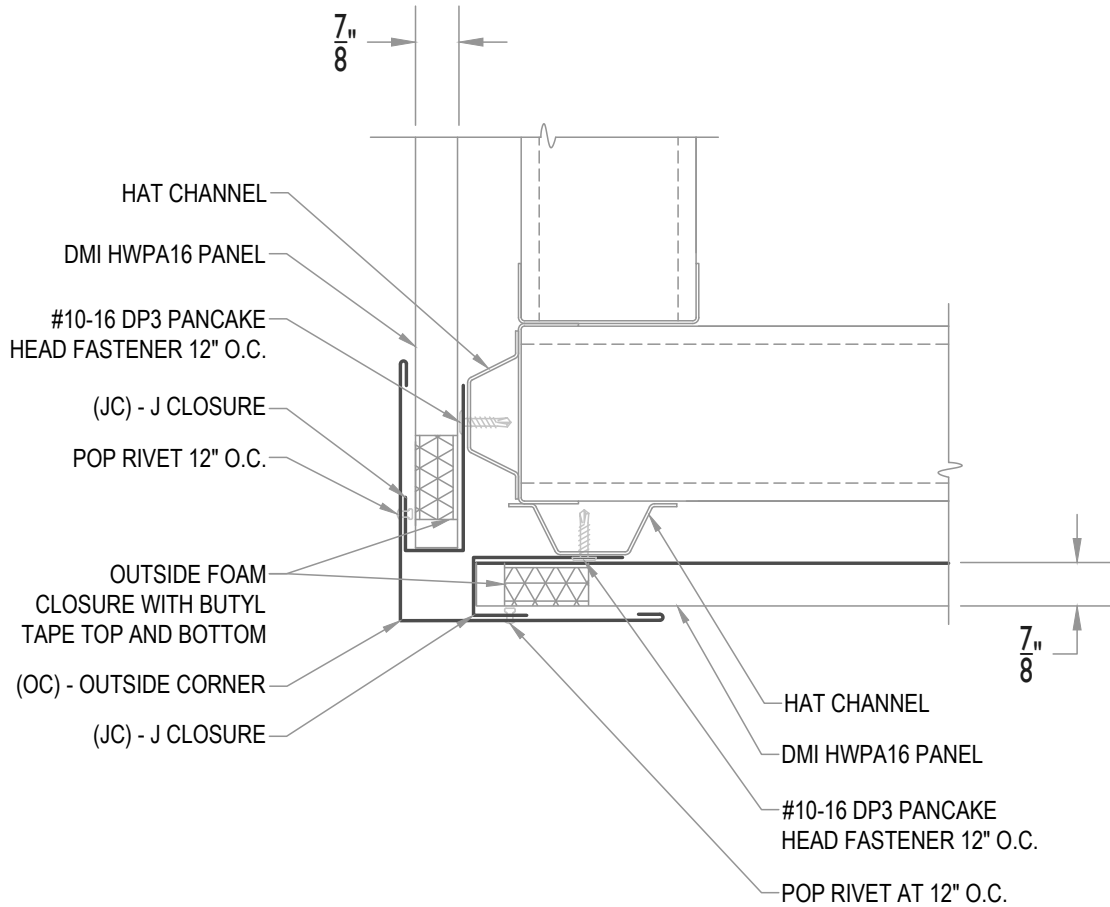
Issue/Rev Date:

04/19

Scale:

3"=1'-0"

MAXIMUM PANEL ATTACHMENT FASTENER SPACING IS 24" O.C. ALL FASTENERS TO PENETRATE WOOD 3/4" MIN. AND METAL FRAMING 1/2" MIN.



OUTSIDE CORNER

• PROVEN • DEPENDABLE • SUSTAINABLE •

METAL ENVELOPE SYSTEMS SINCE 1988

WWW.DMIMETALS.COM

Detail:  
HHPA16-H-03-00

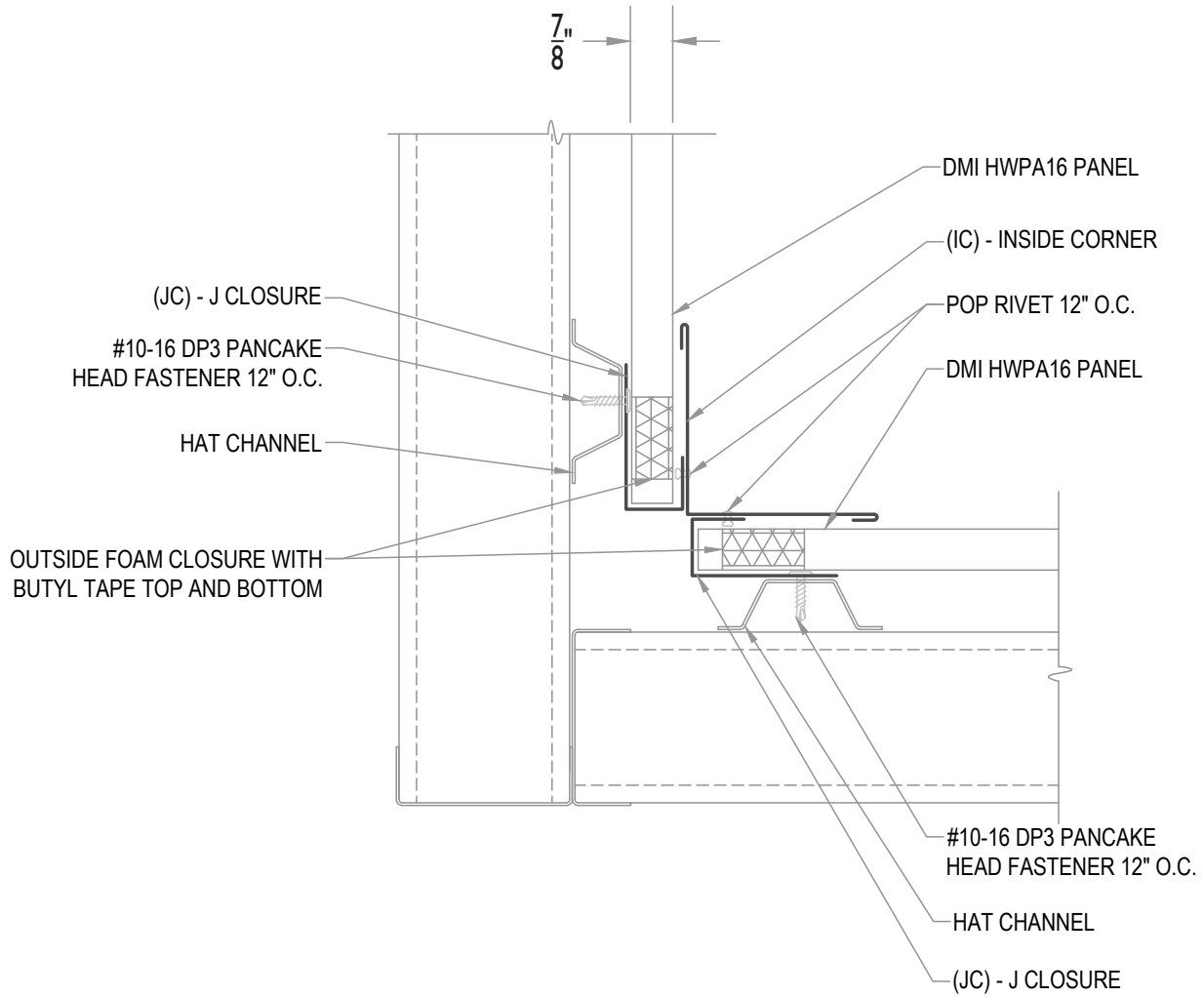
Issue/Rev Date:

04/19

Scale:

3"=1'-0"

MAXIMUM PANEL ATTACHMENT FASTENER SPACING IS 24" O.C. ALL FASTENERS TO PENETRATE WOOD 3/4" MIN. AND METAL FRAMING 1/2" MIN.



INSIDE CORNER

• **PROVEN** • **DEPENDABLE** • **SUSTAINABLE** •  
**METAL ENVELOPE SYSTEMS SINCE 1988**  
[WWW.DMIMETALS.COM](http://WWW.DMIMETALS.COM)

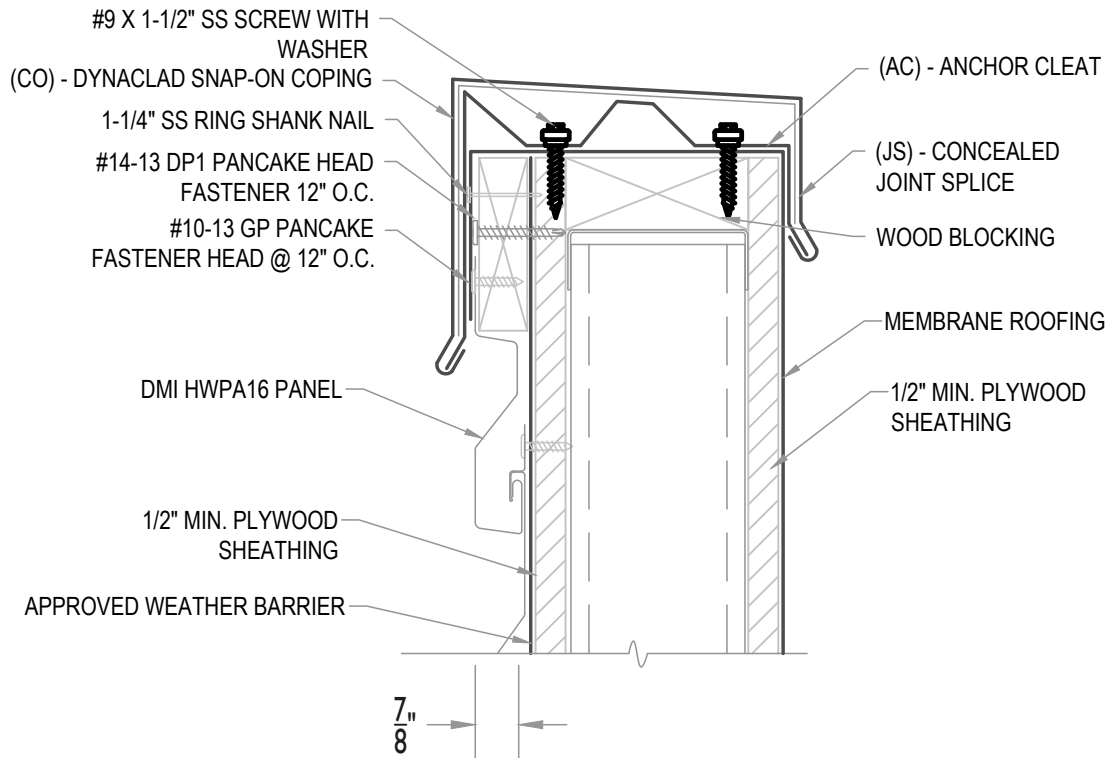
Detail:  
**HWP A16-H-03-01**

Issue/Rev Date:  
**04/19**

Scale:  
**3"=1'-0"**

MAXIMUM PANEL ATTACHMENT FASTENER SPACING IS 24" O.C. ALL FASTENERS TO PENETRATE WOOD 3/4" MIN. AND METAL FRAMING 1/2" MIN.

SEE DMI DYNACLAD EDGE INSTALLATION GUIDE FOR COMPLETE FASTENING AND INSTALLATION INFORMATION FOR ES-1 RATED SNAP-ON COPING



COPING WITH WOOD SUBSTRATE

• **PROVEN** • **DEPENDABLE** • **SUSTAINABLE** •

**METAL ENVELOPE SYSTEMS SINCE 1988**

WWW.DMIMETALS.COM

Detail:

**HHPA16-H-04-00**

Issue/Rev Date:

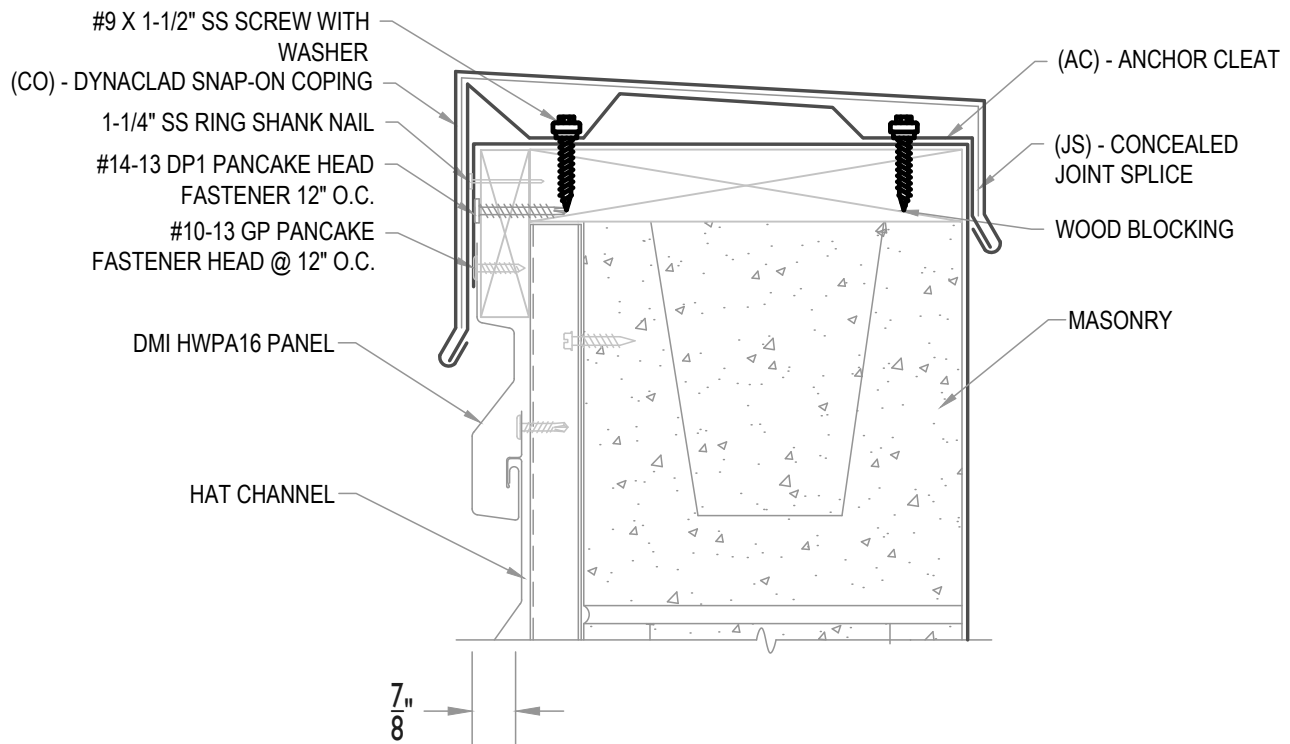
**04/19**

Scale:

**3"=1'-0"**

MAXIMUM PANEL ATTACHMENT FASTENER SPACING IS 24" O.C. ALL FASTENERS TO PENETRATE WOOD 3/4" MIN. AND METAL FRAMING 1/2" MIN.

SEE DMI DYNACLAD EDGE INSTALLATION GUIDE FOR COMPLETE FASTENING AND INSTALLATION INFORMATION FOR ES-1 RATED SNAP-ON COPING



COPING WITH HAT CHANNEL

• **PROVEN** • **DEPENDABLE** • **SUSTAINABLE** •

**METAL ENVELOPE SYSTEMS SINCE 1988**

WWW.DMIMETALS.COM

Detail:

**HWP16-H-04-01**

Issue/Rev Date:

04/19

Scale:

3"=1'-0"

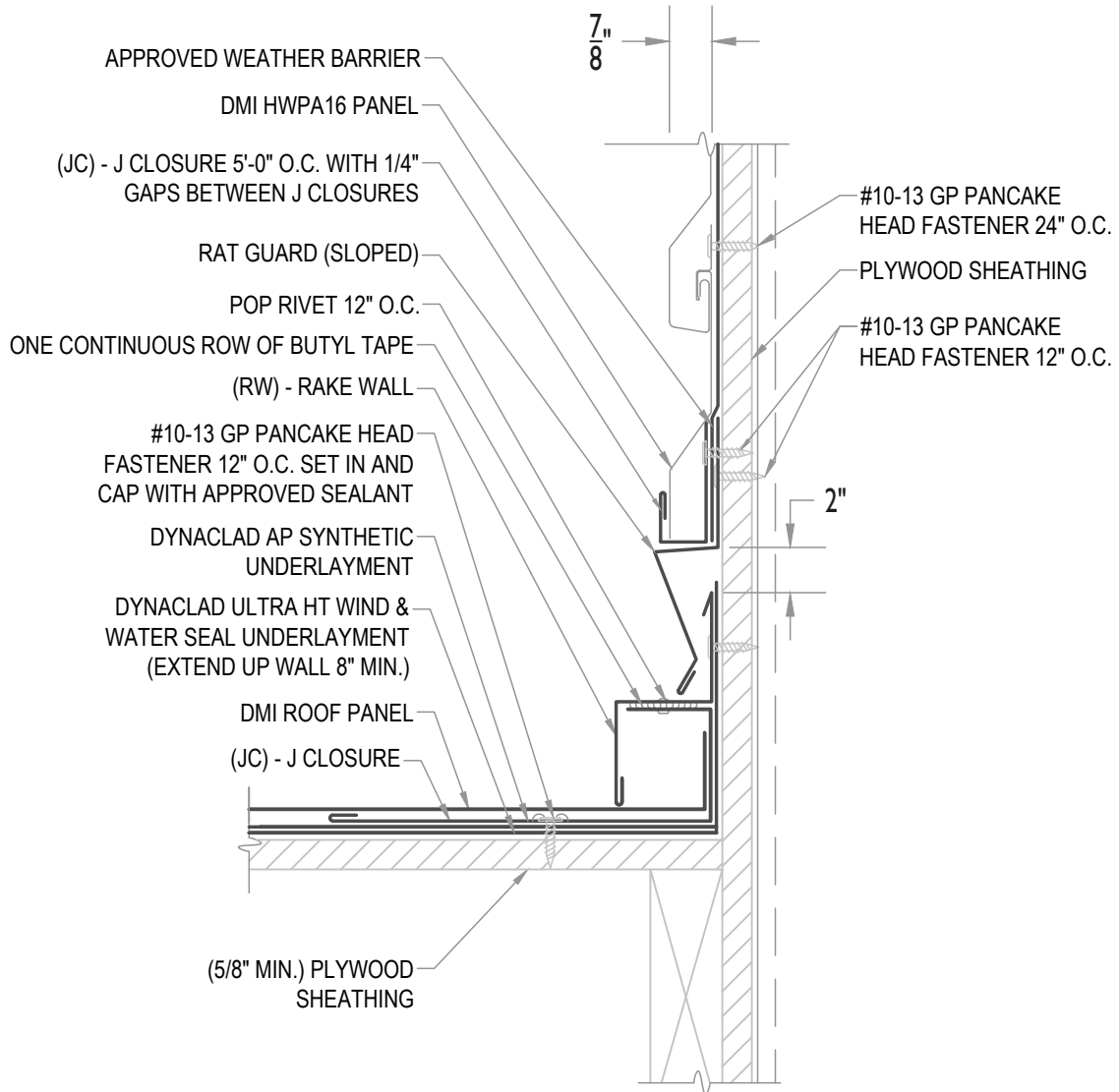


**FLASHING LAP NOTE**

LAP (RW) - RAKE WALL AND RAT GUARD (SLOPED) 2" MINIMUM WITH 2 ROWS OF BUTYL SEALANT.

**FASTENING NOTE**

MAXIMUM PANEL ATTACHMENT FASTENERS 24" O.C.  
FASTENERS TO PENETRATE WOOD 3/4" MIN AND METAL FRAMING 1/2" MIN.



**RAKE WALL**

**• PROVEN • DEPENDABLE • SUSTAINABLE •**

**METAL ENVELOPE SYSTEMS SINCE 1988**

[WWW.DMIMETALS.COM](http://WWW.DMIMETALS.COM)

Detail:

**HWP16-H-05-00**

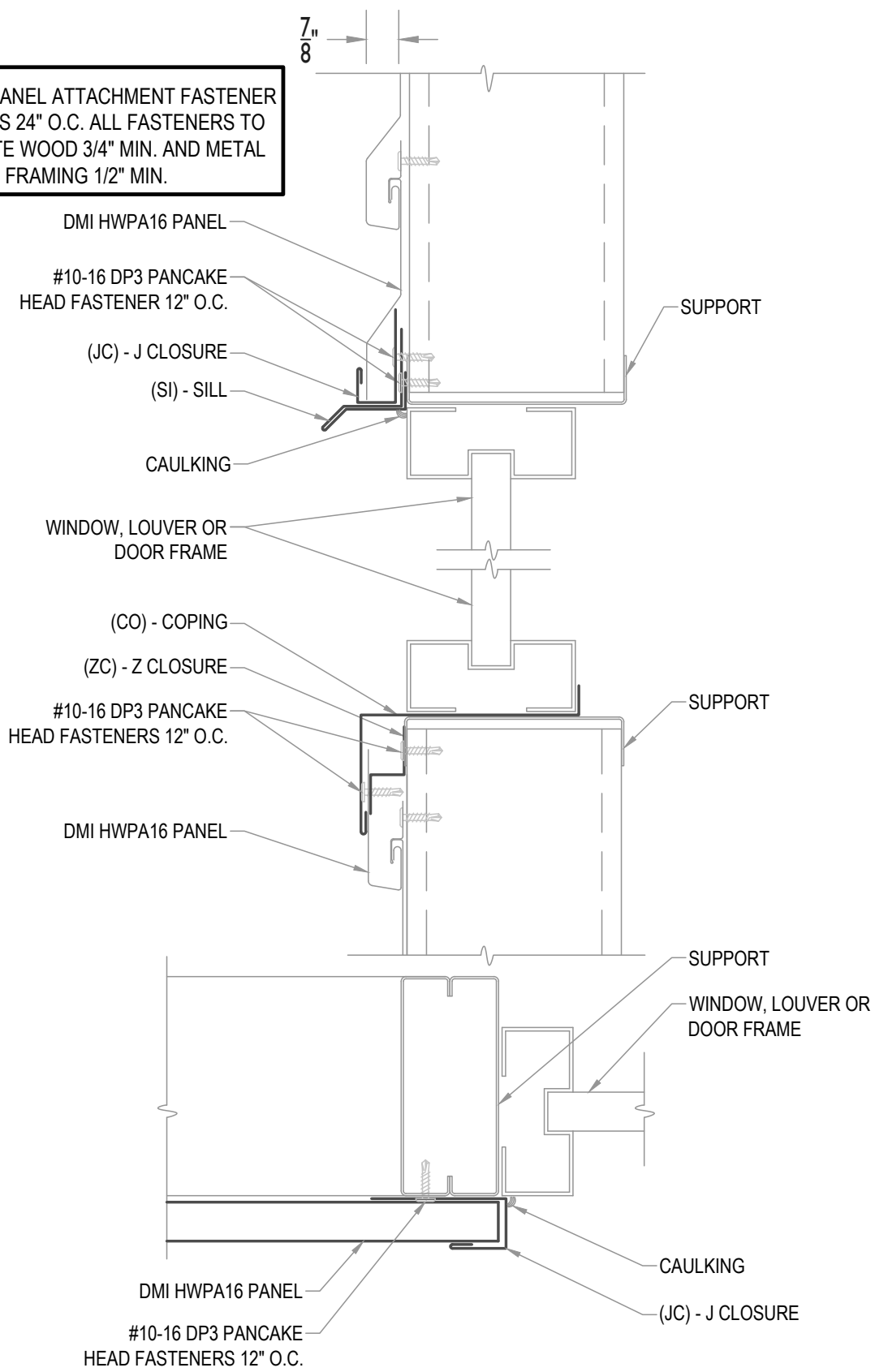
Issue/Rev Date:

**04/19**

Scale:

**3"=1'-0"**

MAXIMUM PANEL ATTACHMENT FASTENER SPACING IS 24" O.C. ALL FASTENERS TO PENETRATE WOOD 3/4" MIN. AND METAL FRAMING 1/2" MIN.

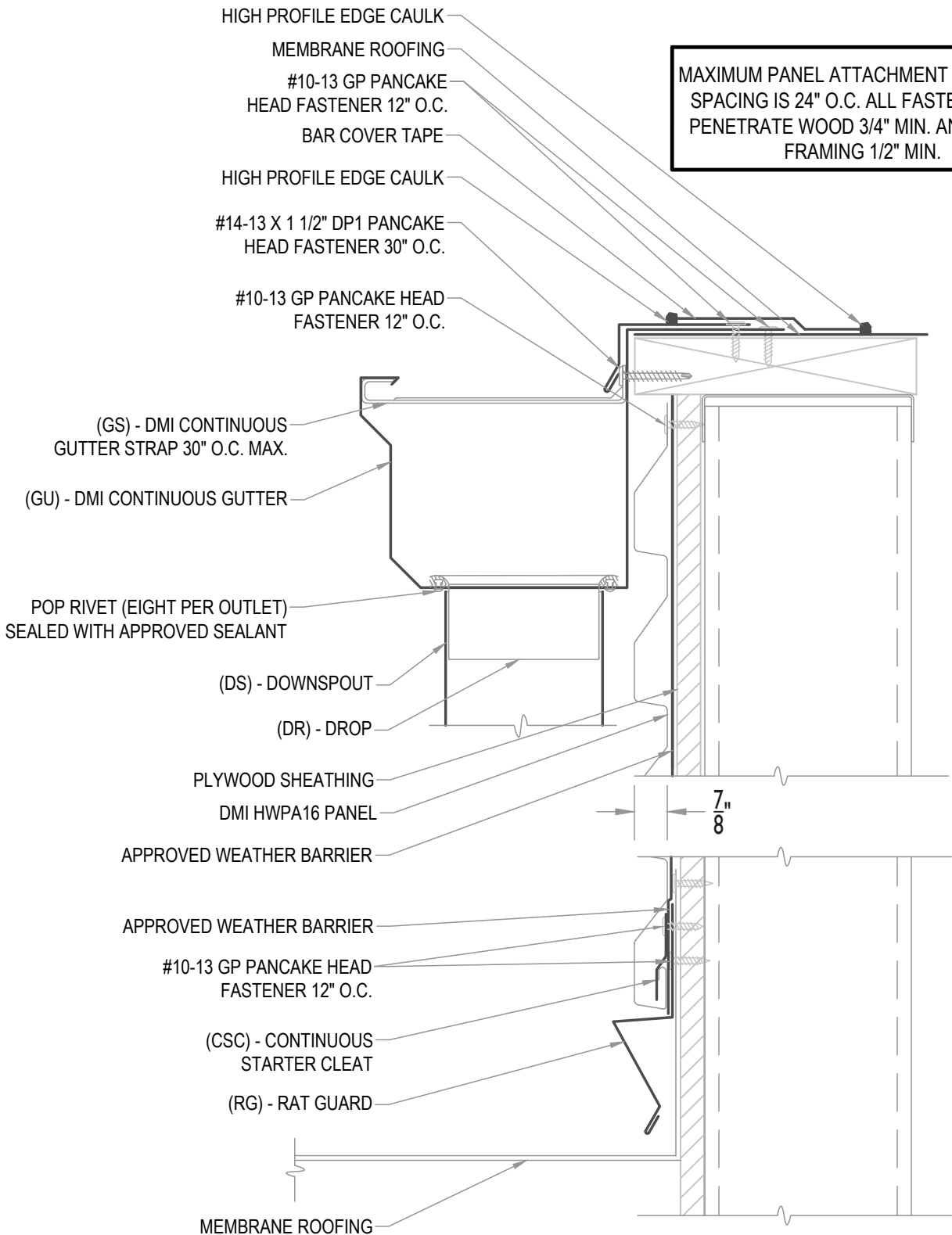


OPENING HEAD, SILL AND JAMB

• **PROVEN** • **DEPENDABLE** • **SUSTAINABLE** •  
**METAL ENVELOPE SYSTEMS SINCE 1988**  
[WWW.DMIMETALS.COM](http://WWW.DMIMETALS.COM)

Detail:  
**HWP A16-H-06-00**

Issue/Rev Date:	Scale:
<b>04/19</b>	<b>3"=1'-0"</b>



MAXIMUM PANEL ATTACHMENT FASTENER SPACING IS 24" O.C. ALL FASTENERS TO PENETRATE WOOD 3/4" MIN. AND METAL FRAMING 1/2" MIN.

- HIGH PROFILE EDGE CAULK
- MEMBRANE ROOFING
- #10-13 GP PANCAKE HEAD FASTENER 12" O.C.
- BAR COVER TAPE
- HIGH PROFILE EDGE CAULK
- #14-13 X 1 1/2" DP1 PANCAKE HEAD FASTENER 30" O.C.
- #10-13 GP PANCAKE HEAD FASTENER 12" O.C.

- (GS) - DMI CONTINUOUS GUTTER STRAP 30" O.C. MAX.
- (GU) - DMI CONTINUOUS GUTTER

POP RIVET (EIGHT PER OUTLET) SEALED WITH APPROVED SEALANT

- (DS) - DOWNSPOUT
- (DR) - DROP

- PLYWOOD SHEATHING
- DMI HWP16 PANEL
- APPROVED WEATHER BARRIER

- APPROVED WEATHER BARRIER
- #10-13 GP PANCAKE HEAD FASTENER 12" O.C.

- (CSC) - CONTINUOUS STARTER CLEAT
- (RG) - RAT GUARD

MEMBRANE ROOFING



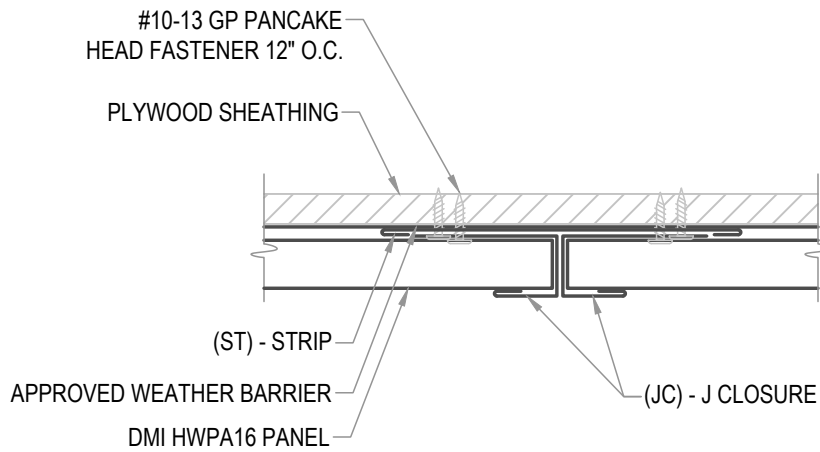
WALL SECTION AT MEMBRANE ROOF

• **PROVEN** • **DEPENDABLE** • **SUSTAINABLE** •  
**METAL ENVELOPE SYSTEMS SINCE 1988**  
 WWW.DMIMETALS.COM

Detail:  
 HWP16-H-07-00

Issue/Rev Date: 04/19  
 Scale: 3"=1'-0"

MAXIMUM PANEL ATTACHMENT FASTENER  
SPACING IS 24" O.C. ALL FASTENERS TO  
PENETRATE WOOD 3/4" MIN. AND METAL  
FRAMING 1/2" MIN.



PANEL LAP

• **PROVEN** • **DEPENDABLE** • **SUSTAINABLE** •

**METAL ENVELOPE SYSTEMS SINCE 1988**

WWW.DMIMETALS.COM

Detail:

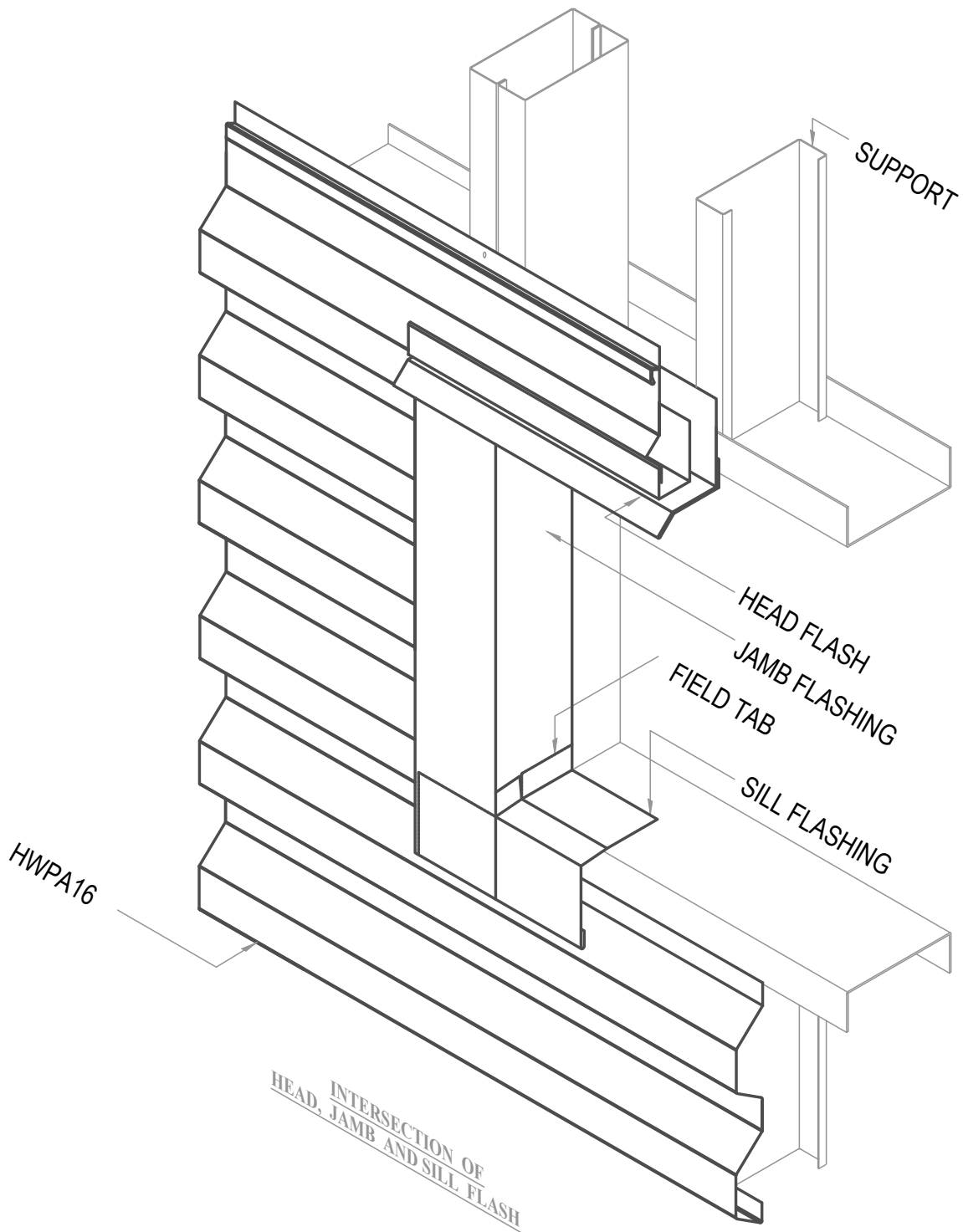
HWP16-H-08-00

Issue/Rev Date:

04/19

Scale:

3"=1'-0"



ISO HEAD, SILL AND JAMB

• PROVEN • DEPENDABLE • SUSTAINABLE •

METAL ENVELOPE SYSTEMS SINCE 1988

WWW.DMIMETALS.COM

Detail:

HWP A16-H-09-00

Issue/Rev Date:

04/19

Scale:

NTS