

PANEL EXPANSION NOTE

FOR STEEL PANELS < 40' WITH A 1 1/2" TURN DOWN AND 1 1/2" HEM CLEARANCE:

1. 1/4" FOR INSTALLATION TEMPERATURE BELOW 30 DEGREES FARENHEIT
2. 1/2" FOR INSTALLATION TEMPERATURE ABOVE 30 DEGREES FARENHEIT..

FOR STEEL PANELS > 40' WITH A 2" TURN DOWN AND 2" HEM CLEARANCE:

1. 1/4" FOR INSTALLATION TEMPERATURE BELOW 30 DEGREES FARENHEIT.
2. 1/2" FOR INSTALLATION TEMPERATURE ABOVE 30 DEGREES FARENHEIT.

FOR ALUMINUM PANELS - CONTACT DMI

GUTTER LAP NOTE

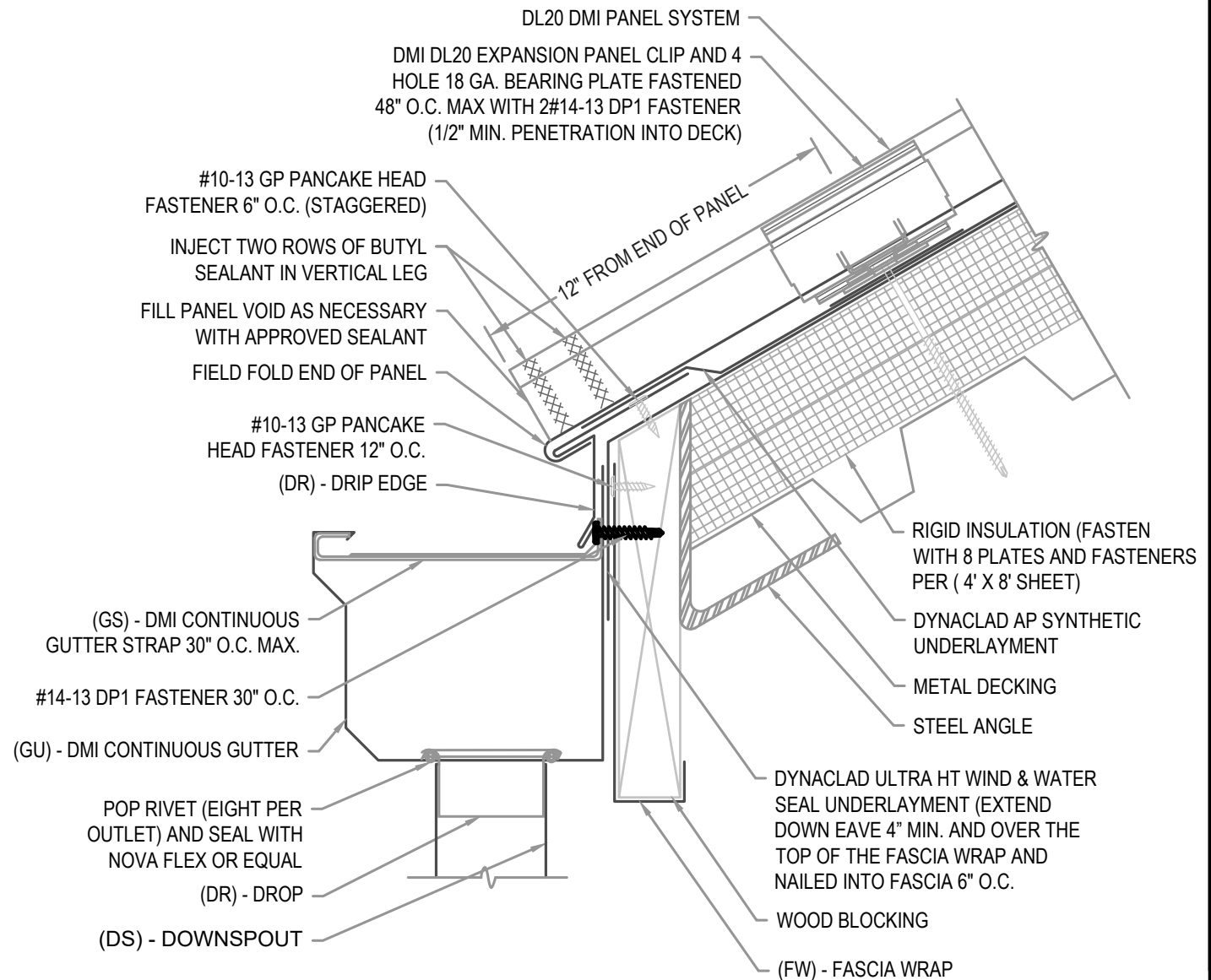
LAP GUTTER 3" MIN W/ 2 ROWS OF APPROVED SEALANT AND POP RIVET JOINT 2" O.C. SET IN AND CAP POP RIVETS IN APPROVED SEALANT.

FLASHING LAP NOTE

LAP FLASHINGS 2" MIN W/ 1 ROW OF BUTYL SEALANT.

FULL ICE AND WATER UNDERLAYMENT NOTE

FOR PANEL AREAS WITH FULL ICE AND WATER UNDERLAYMENT: STRIP IN DRIP EDGE WITH 6" STRIP OF APPROVED ICE AND WATER UNDERLAYMENT.



ARCHITECTURAL EAVE W/ GUTTER

• **PROVEN** • **DEPENDABLE** • **SUSTAINABLE** •
METAL ENVELOPE SYSTEMS SINCE 1988

WWW.DMIMETALS.COM

Detail:

DL20 01-00-IA

Issue/Rev Date:

01/17

Scale:

3"=1'-0"

PANEL EXPANSION NOTE

FOR STEEL PANELS < 40' WITH A 1 1/2" TURN DOWN AND 1 1/2" HEM CLEARANCE:

1. 1/4" FOR INSTALLATION TEMPERATURE BELOW 30 DEGREES FARENHEIT
2. 1/2" FOR INSTALLATION TEMPERATURE ABOVE 30 DEGREES FARENHEIT..

FOR STEEL PANELS > 40' WITH A 2" TURN DOWN AND 2" HEM CLEARANCE:

1. 1/4" FOR INSTALLATION TEMPERATURE BELOW 30 DEGREES FARENHEIT.
2. 1/2" FOR INSTALLATION TEMPERATURE ABOVE 30 DEGREES FARENHEIT.

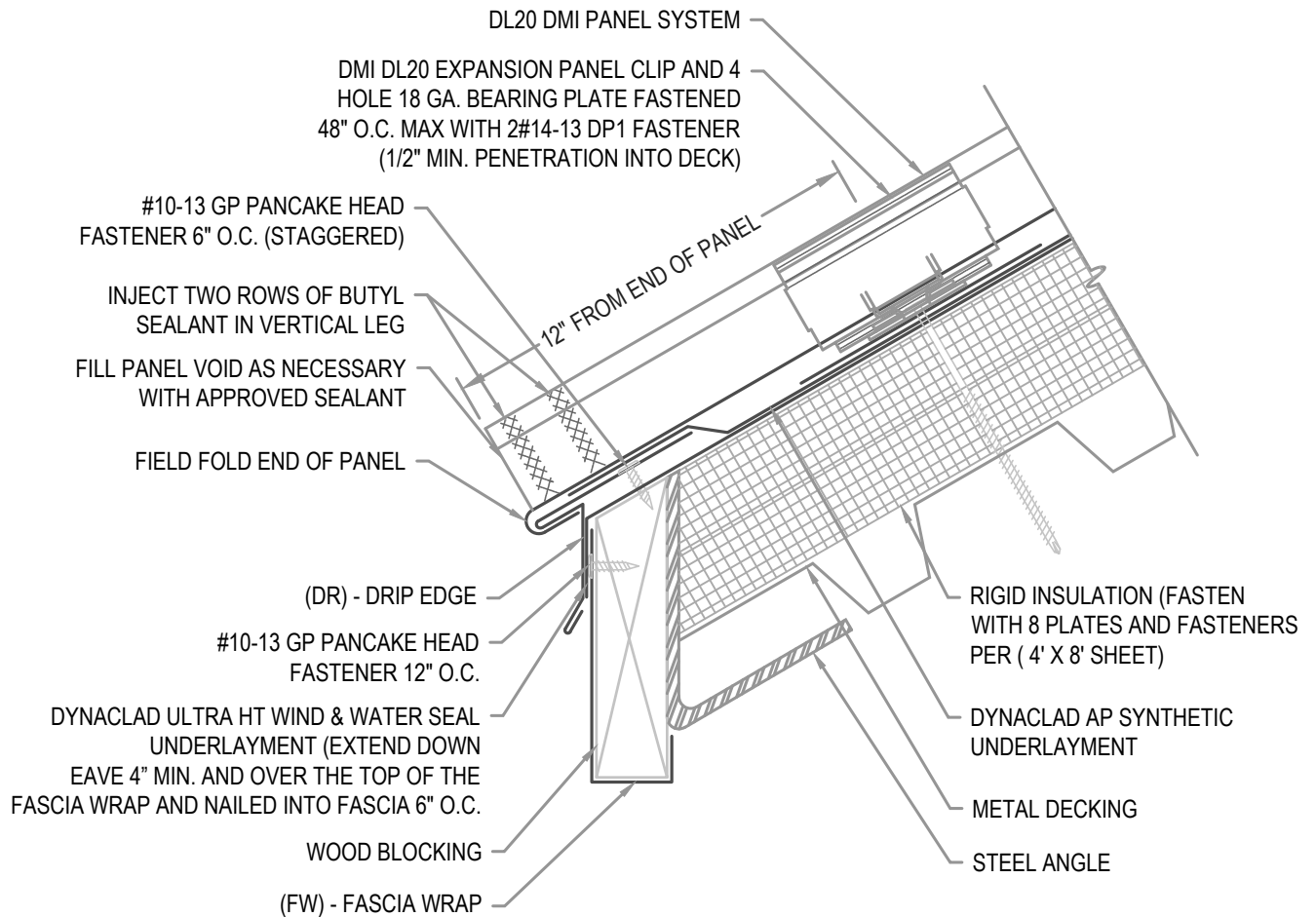
FOR ALUMINUM PANELS - CONTACT DMI

FLASHING LAP NOTE

LAP FLASHINGS 2" MIN W/ 1 ROW OF BUTYL SEALANT.

FULL ICE AND WATER UNDERLAYMENT NOTE

FOR PANEL AREAS WITH FULL ICE AND WATER UNDERLAYMENT: STRIP IN DRIP EDGE WITH 6" STRIP OF APPROVED ICE AND WATER UNDERLAYMENT.



ARCHITECTURAL EAVE W/ FASCIA WRAP

• **PROVEN** • **DEPENDABLE** • **SUSTAINABLE** •
METAL ENVELOPE SYSTEMS SINCE 1988

WWW.DMIMETALS.COM

Detail:

DL20 01-01-IA

Issue/Rev Date:

01/17

Scale:

3"=1'-0"

PANEL EXPANSION NOTE

FOR STEEL PANELS < 40' WITH A 1 1/2" TURN DOWN AND 1 1/2" HEM CLEARANCE:

1. 1/4" FOR INSTALLATION TEMPERATURE BELOW 30 DEGREES FARENHEIT
2. 1/2" FOR INSTALLATION TEMPERATURE ABOVE 30 DEGREES FARENHEIT..

FOR STEEL PANELS > 40' WITH A 2" TURN DOWN AND 2" HEM CLEARANCE:

1. 1/4" FOR INSTALLATION TEMPERATURE BELOW 30 DEGREES FARENHEIT.
2. 1/2" FOR INSTALLATION TEMPERATURE ABOVE 30 DEGREES FARENHEIT.

FOR ALUMINUM PANELS - CONTACT DMI

GUTTER NOTES

LAP GUTTER 3" MIN W/ 2 ROWS OF APPROVED SEALANT AND POP RIVET JOINT 2" O.C. SET IN AND CAP POP RIVETS IN APPROVED SEALANT.

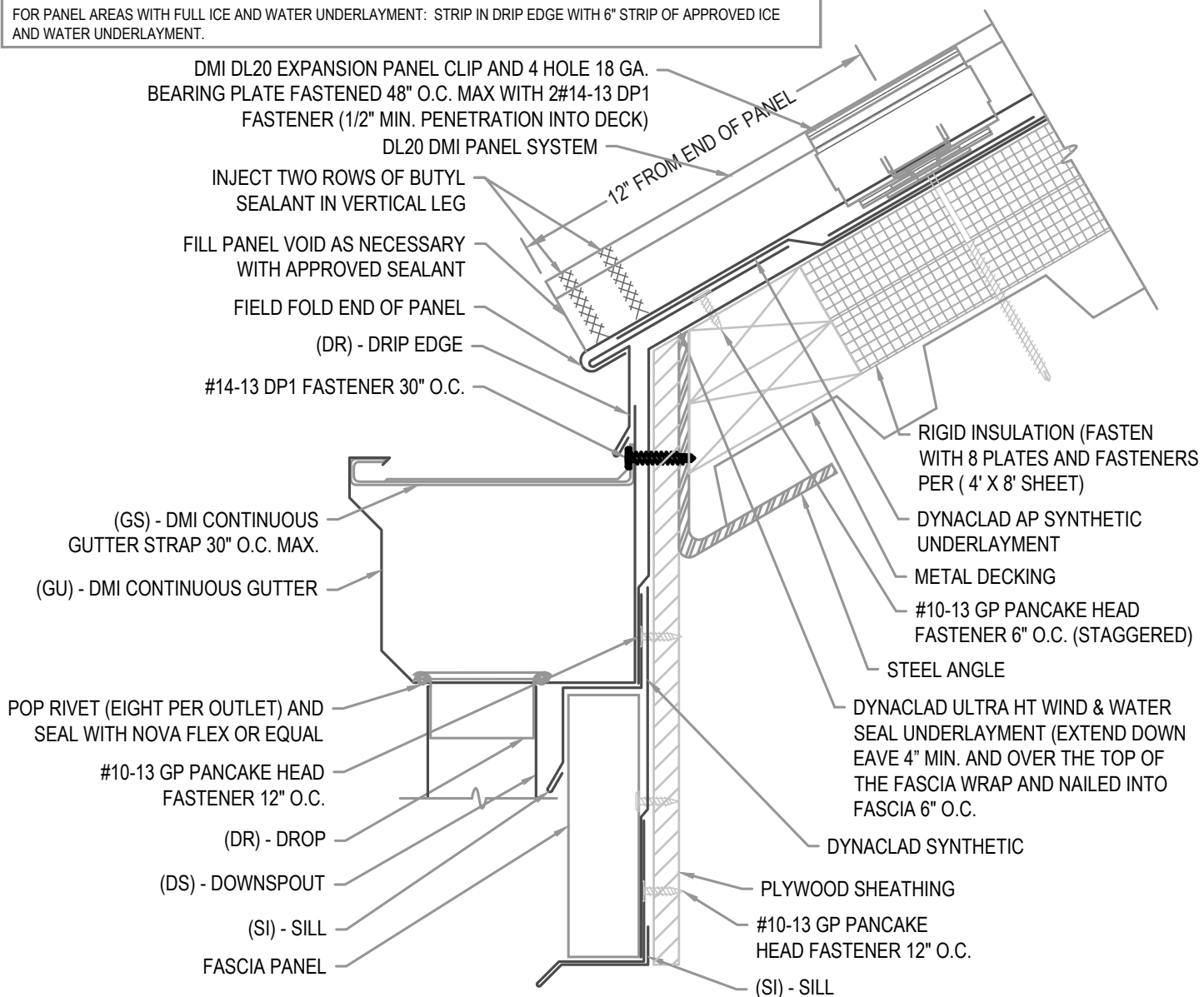
EXPANSION JOINT REQUIRED FOR EVERY 50'-0" OF GUTTER (REFER TO MISCELLANEOUS DETAILS)

FLASHING LAP NOTE

LAP FLASHINGS 2" MIN W/ 1 ROW OF BUTYL SEALANT.

FULL ICE AND WATER UNDERLAYMENT NOTE

FOR PANEL AREAS WITH FULL ICE AND WATER UNDERLAYMENT: STRIP IN DRIP EDGE WITH 6" STRIP OF APPROVED ICE AND WATER UNDERLAYMENT.



ARCHITECTURAL EAVE W/ GUTTER

• **PROVEN** • **DEPENDABLE** • **SUSTAINABLE** •
METAL ENVELOPE SYSTEMS SINCE 1988

WWW.DMIMETALS.COM

Detail:

DL20 01-02-IA

Issue/Rev Date:

01/17

Scale:

3"=1'-0"

PANEL EXPANSION NOTE

FOR STEEL PANELS < 40' WITH A 1 1/2" TURN DOWN AND 1 1/2" HEM CLEARANCE:

1. 1/4" FOR INSTALLATION TEMPERATURE BELOW 30 DEGREES FARENHEIT
2. 1/2" FOR INSTALLATION TEMPERATURE ABOVE 30 DEGREES FARENHEIT..

FOR STEEL PANELS > 40' WITH A 2" TURN DOWN AND 2" HEM CLEARANCE:

1. 1/4" FOR INSTALLATION TEMPERATURE BELOW 30 DEGREES FARENHEIT.
2. 1/2" FOR INSTALLATION TEMPERATURE ABOVE 30 DEGREES FARENHEIT.

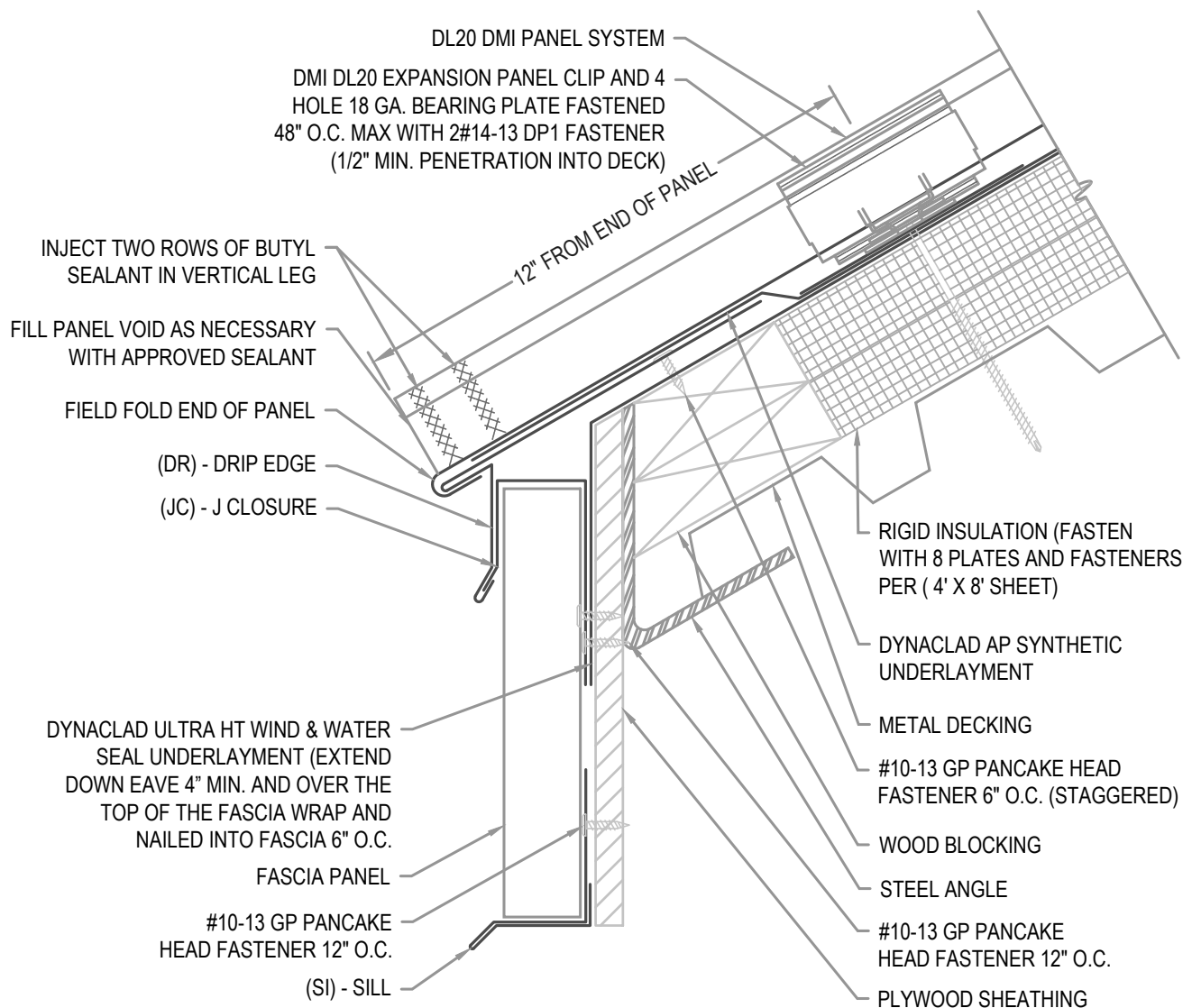
FOR ALUMINUM PANELS - CONTACT DMI

FLASHING LAP NOTE

LAP FLASHINGS 2" MIN W/ 1 ROW OF BUTYL SEALANT.

FULL ICE AND WATER UNDERLAYMENT NOTE

FOR PANEL AREAS WITH FULL ICE AND WATER UNDERLAYMENT: STRIP IN DRIP EDGE WITH 6" STRIP OF APPROVED ICE AND WATER UNDERLAYMENT.



ARCHITECTURAL EAVE W/ FASCIA PANEL

• **PROVEN** • **DEPENDABLE** • **SUSTAINABLE** •
METAL ENVELOPE SYSTEMS SINCE 1988

WWW.DMIMETALS.COM

Detail:

DL20 01-03-IA

Issue/Rev Date:

01/17

Scale:

3"=1'-0"

PANEL EXPANSION NOTE

FOR STEEL PANELS < 40' WITH A 1 1/2" TURN DOWN AND 1 1/2" HEM CLEARANCE:

1. 1/4" FOR INSTALLATION TEMPERATURE BELOW 30 DEGREES FARENHEIT
2. 1/2" FOR INSTALLATION TEMPERATURE ABOVE 30 DEGREES FARENHEIT..

FOR STEEL PANELS > 40' WITH A 2" TURN DOWN AND 2" HEM CLEARANCE:

1. 1/4" FOR INSTALLATION TEMPERATURE BELOW 30 DEGREES FARENHEIT.
2. 1/2" FOR INSTALLATION TEMPERATURE ABOVE 30 DEGREES FARENHEIT.

FOR ALUMINUM PANELS - CONTACT DMI

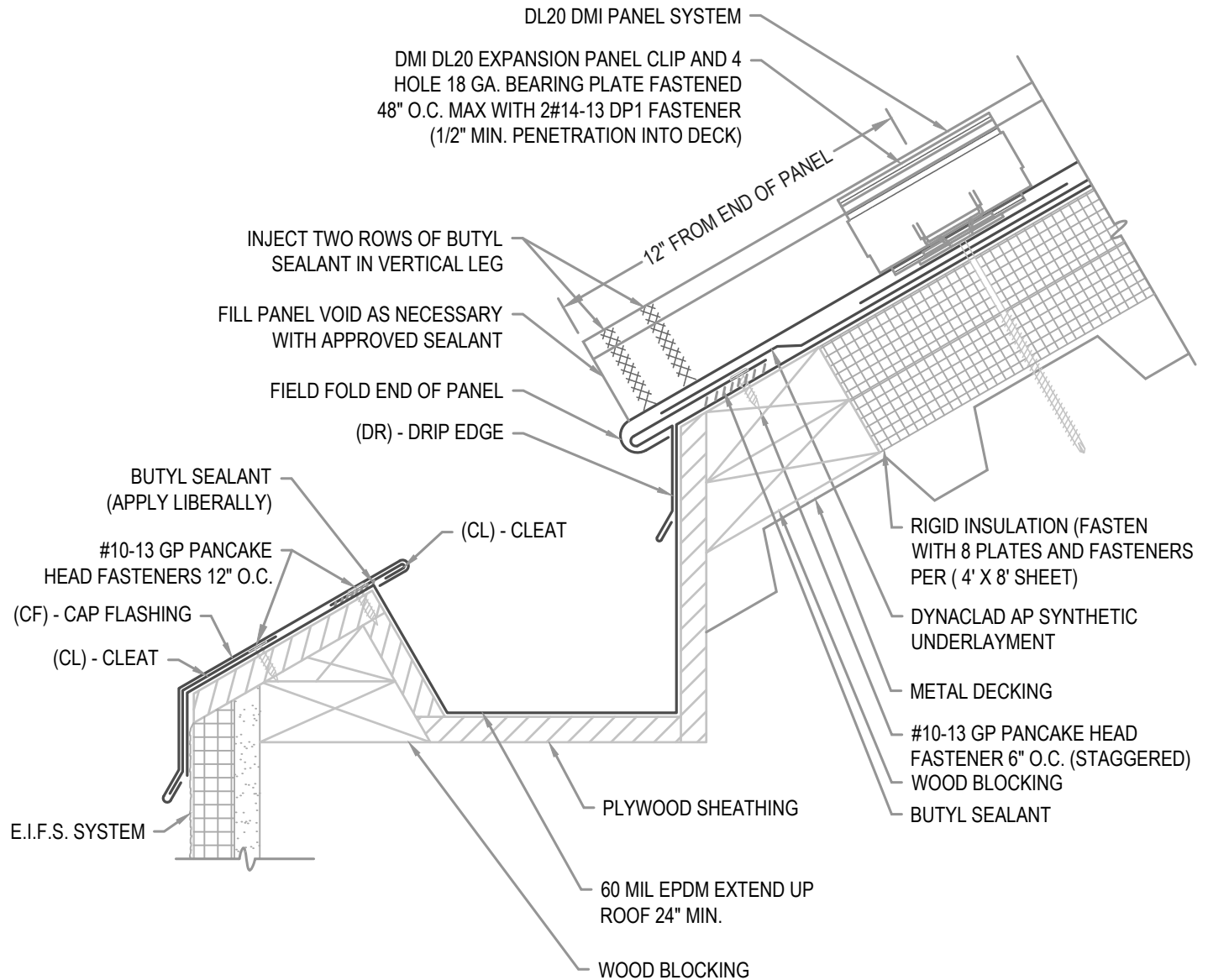
INTERIOR GUTTER DESIGN TO BE PER SMACNA GUIDELINES

FLASHING LAP NOTE

LAP FLASHINGS 2" MIN W/ 1 ROW OF BUTYL SEALANT.

FULL ICE AND WATER UNDERLAYMENT NOTE

FOR PANEL AREAS WITH FULL ICE AND WATER UNDERLAYMENT: STRIP IN DRIP EDGE WITH 6" STRIP OF APPROVED ICE AND WATER UNDERLAYMENT.



ARCHITECTURAL EAVE

• **PROVEN** • **DEPENDABLE** • **SUSTAINABLE** •
METAL ENVELOPE SYSTEMS SINCE 1988

WWW.DMIMETALS.COM

Detail:

DL20 01-04-IA

Issue/Rev Date:

01/17

Scale:

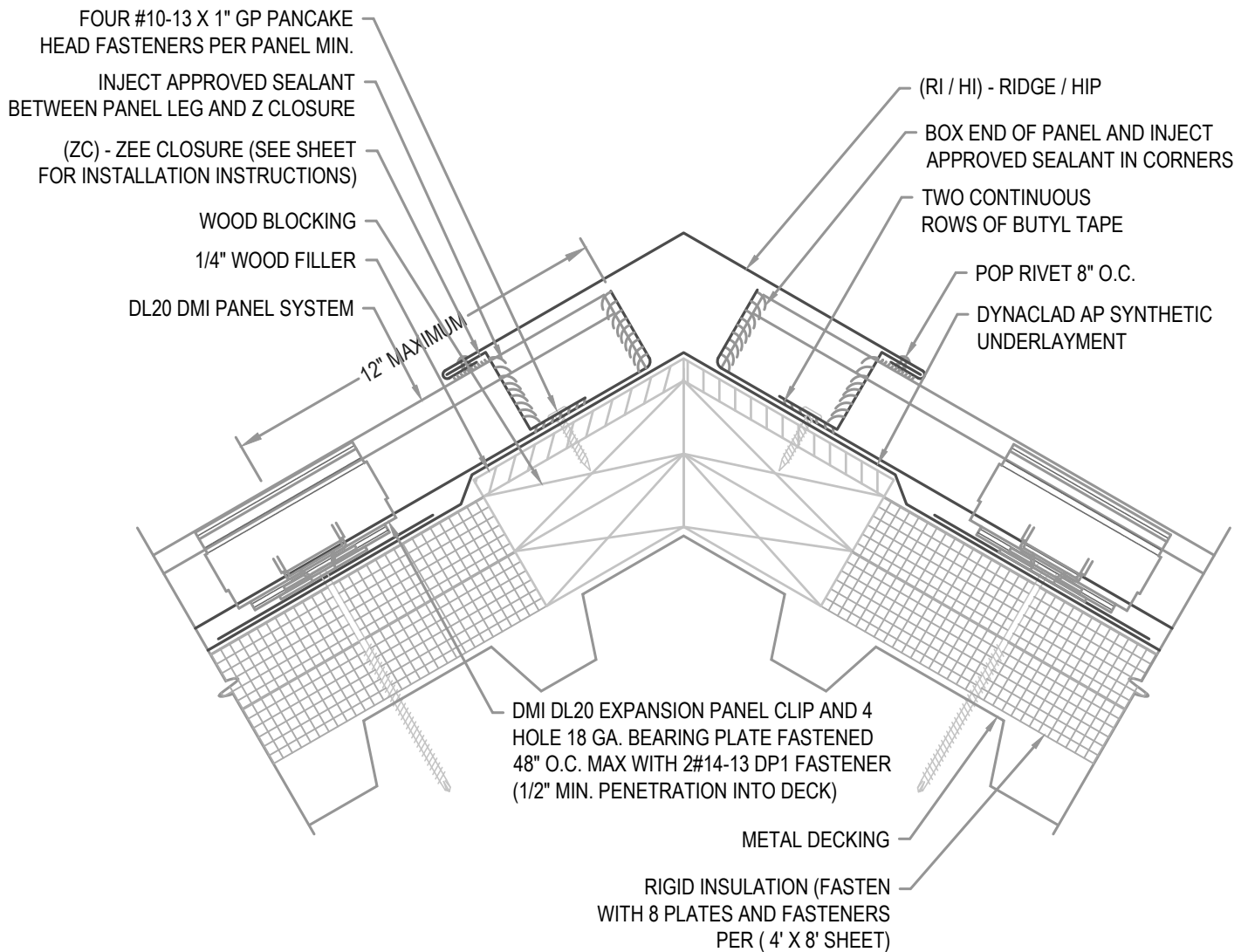
3"=1'-0"

EXPANSION NOTE

RIDGES EXCEEDING 100'-0" IN LENGTH REQUIRE THE USE OF A 6" COVER PLATE.

FLASHING LAP NOTE

LAP RIDGE/HIP 4" MIN W/ 2 ROWS OF BUTYL SEALANT.
DO NOT POP RIVET LAPPED FLASHINGS.



ARCHITECTURAL RIDGE / HIP

• **PROVEN** • **DEPENDABLE** • **SUSTAINABLE** •
METAL ENVELOPE SYSTEMS SINCE 1988

WWW.DMIMETALS.COM

Detail:

DL20 02-00-IA

Issue/Rev Date:

01/17

Scale:

3"=1'-0"

EXPANSION NOTE

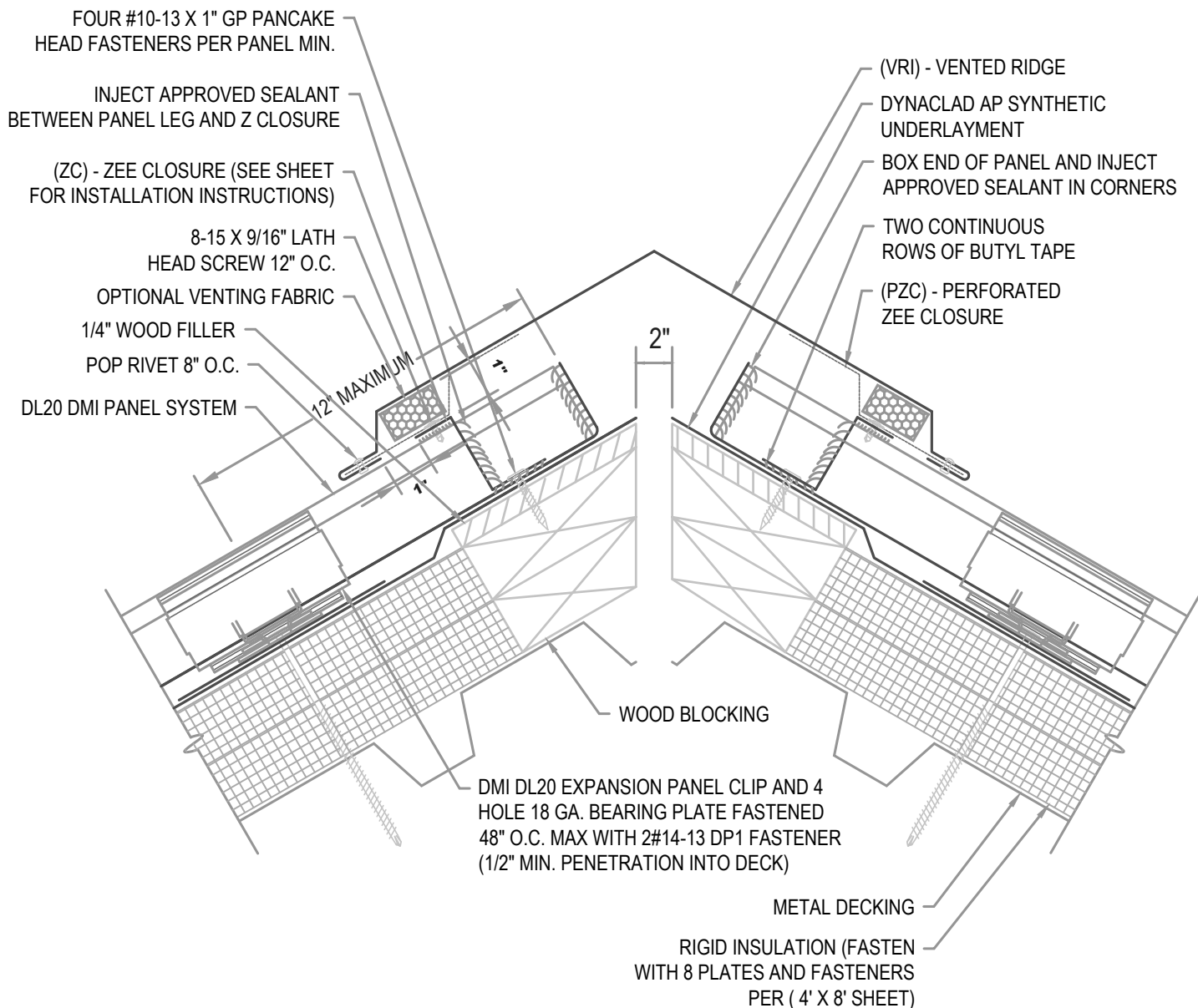
RIDGES EXCEEDING 100'-0" IN LENGTH REQUIRE THE USE OF A 6" COVER PLATE.

FLASHING LAP NOTE

LAP RIDGE/HIP 4" MIN W/ 2 ROWS OF BUTYL SEALANT.
DO NOT POP RIVET LAPPED FLASHINGS.

VENTILATION NOTE

DMI PERFORATED Z CLOSURE PROVIDES 23% NET FREE AIR MOVEMENT.
HIP CONDITIONS CAN NOT BE VENTED.



ARCHITECTURAL VENTED RIDGE

• **PROVEN** • **DEPENDABLE** • **SUSTAINABLE** •
METAL ENVELOPE SYSTEMS SINCE 1988

WWW.DMIMETALS.COM

Detail:

DL20 02-01-IA

Issue/Rev Date:

01/17

Scale:

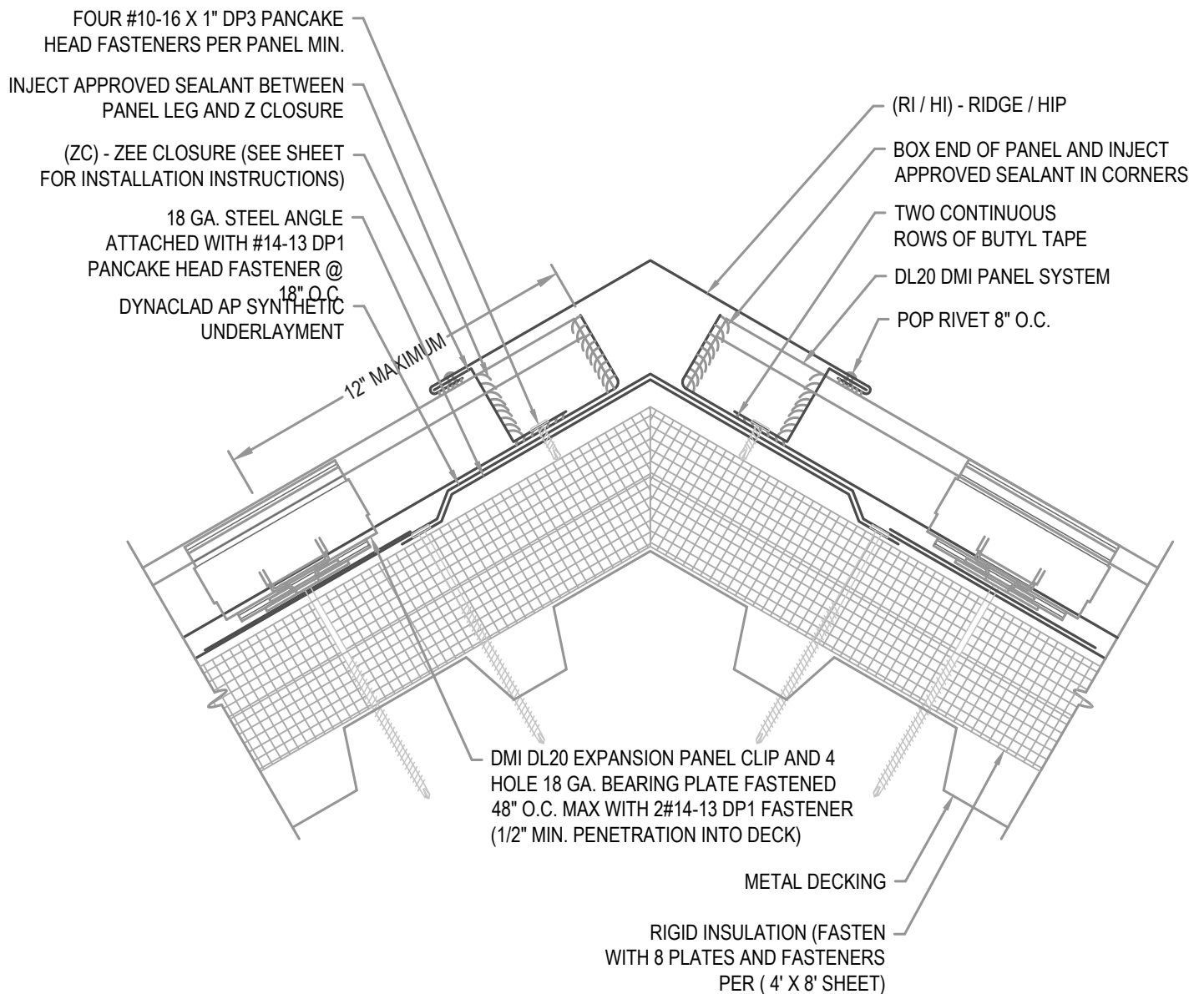
3"=1'-0"

EXPANSION NOTE

RIDGES EXCEEDING 100'-0" IN LENGTH REQUIRE THE USE OF A 6" COVER PLATE.

FLASHING LAP NOTE

LAP RIDGE/HIP 4" MIN W/ 2 ROWS OF BUTYL SEALANT.
DO NOT POP RIVET LAPPED FLASHINGS.



ARCHITECTURAL RIDGE/ HIP

• **PROVEN** • **DEPENDABLE** • **SUSTAINABLE** •
METAL ENVELOPE SYSTEMS SINCE 1988

WWW.DMIMETALS.COM

Detail:

DL20 02-02-IA

Issue/Rev Date:

01/17

Scale:

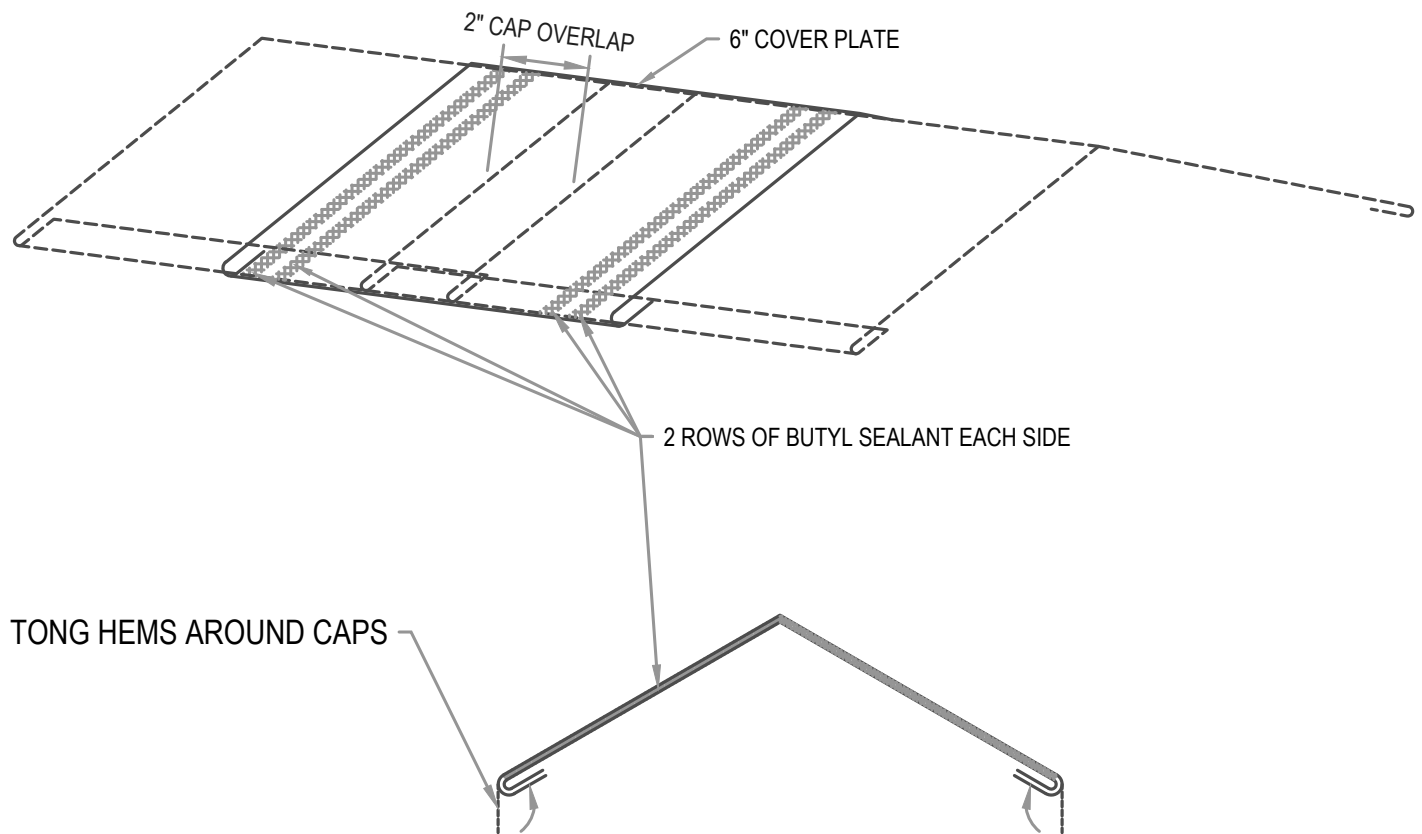
3"=1'-0"

EXPANSION NOTE

RIDGES EXCEEDING 100'-0" IN LENGTH REQUIRE THE USE OF A 6" COVER PLATE.

FLASHING LAP NOTE

LAP RIDGE/HIP 4" MIN W/ 2 ROWS OF BUTYL SEALANT.
DO NOT POP RIVET LAPPED FLASHINGS.



ARCHITECTURAL RIDGE COVER PLATE

• **PROVEN** • **DEPENDABLE** • **SUSTAINABLE** •
METAL ENVELOPE SYSTEMS SINCE 1988

WWW.DMIMETALS.COM

Detail:

DL20 02-03-IA

Issue/Rev Date:

01/17

Scale:

3"=1'-0"

PANEL EXPANSION NOTE

FOR STEEL PANELS < 40' WITH A 1 1/2" TURN DOWN AND 1 1/2" HEM CLEARANCE:

1. 1/4" FOR INSTALLATION TEMPERATURE BELOW 30 DEGREES FAHRENHEIT
2. 1/2" FOR INSTALLATION TEMPERATURE ABOVE 30 DEGREES FAHRENHEIT..

FOR STEEL PANELS > 40' WITH A 2" TURN DOWN AND 2" HEM CLEARANCE:

1. 1/4" FOR INSTALLATION TEMPERATURE BELOW 30 DEGREES FAHRENHEIT.
2. 1/2" FOR INSTALLATION TEMPERATURE ABOVE 30 DEGREES FAHRENHEIT.

PANELS EXCEEDING 40' ADD 1" PER 10' TO EACH SIDE OF VALLEY EXPOSURE.

FOR ALUMINUM PANELS - CONTACT DMI

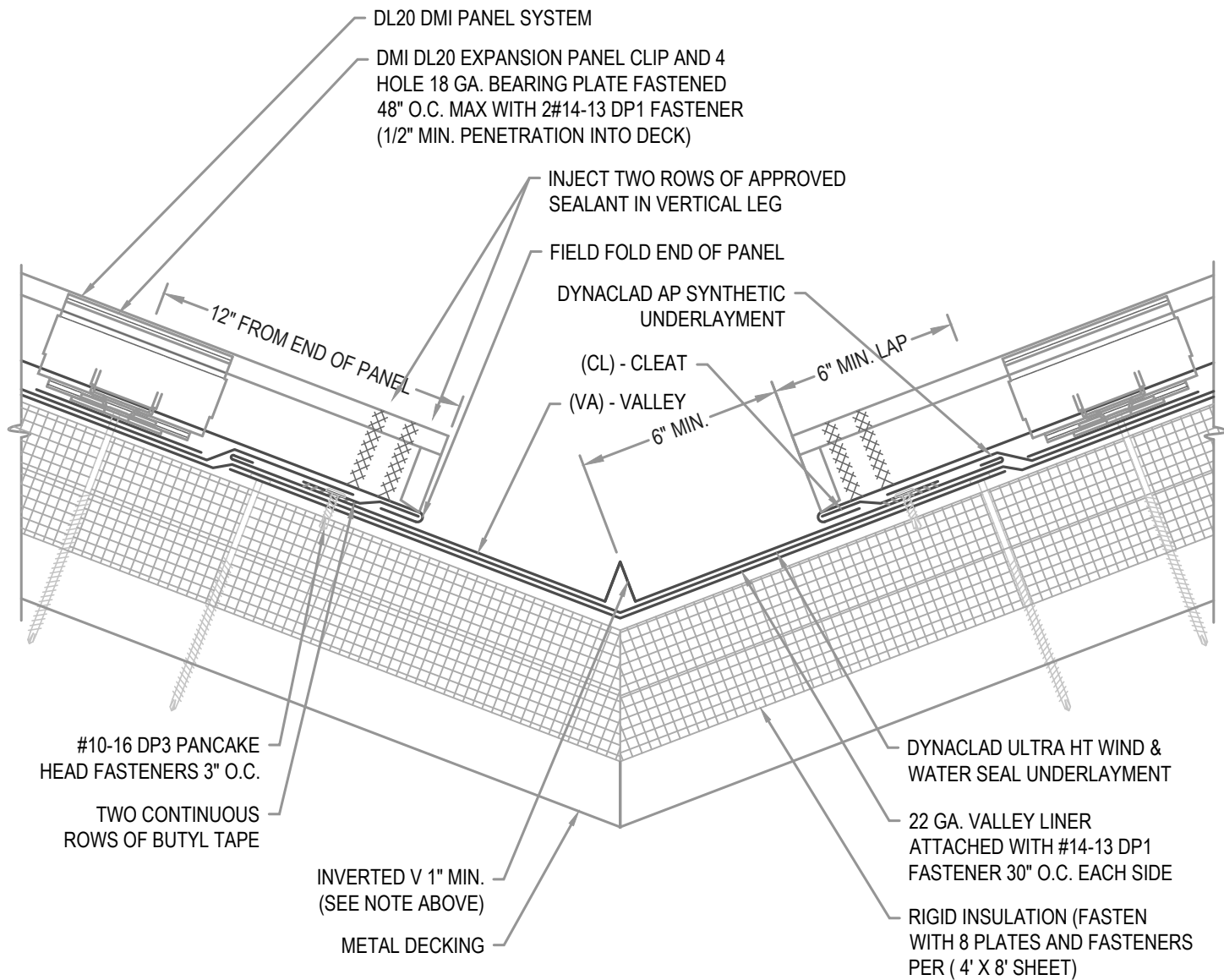
NO POP RIVETS OR FASTENERS ON EXPOSED WEATHER SIDE OF CLEAT.

INVERTED V NOTE

ON ROOF PITCHES OVER 6:12 OR PANEL LENGTHS EXCEEDING 60' OR ON DISSIMILAR PITCHES INCREASE THE INVERTED V IN THE VALLEY TO 2".

FLASHING LAP NOTE

LAP VALLEY 8" MIN. WITH 2 ROWS OF APPROVED SEALANT.



ARCHITECTURAL VALLEY

• **PROVEN** • **DEPENDABLE** • **SUSTAINABLE** •
METAL ENVELOPE SYSTEMS SINCE 1988

WWW.DMIMETALS.COM

Detail:

DL20 03-00-IA

Issue/Rev Date:

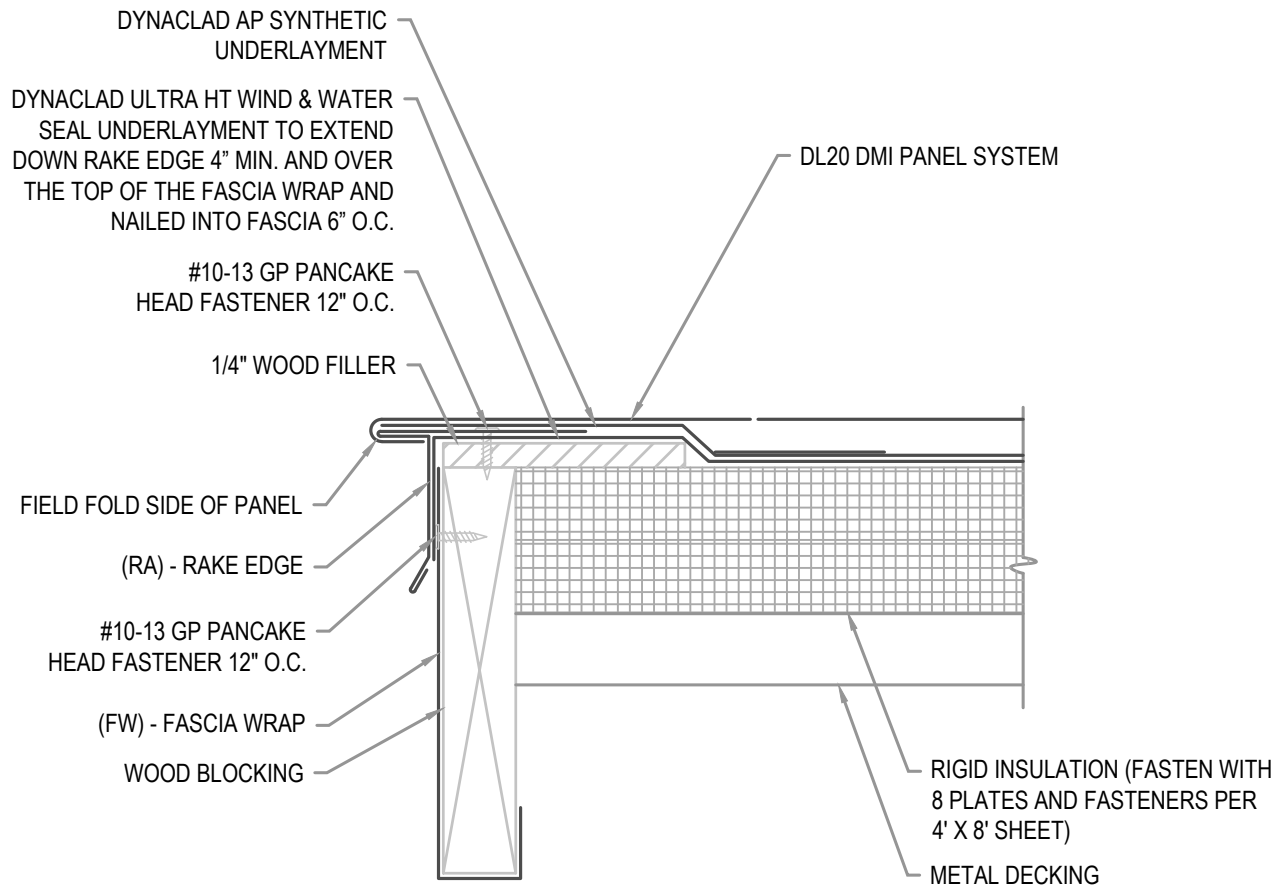
01/17

Scale:

3"=1'-0"

FLASHING LAP NOTE

LAP RAKE EDGE AND FASCIA 2" MINIMUM WITH 1 ROW OF BUTYL SEALANT.



ARCHITECTURAL RAKE EDGE

• **PROVEN** • **DEPENDABLE** • **SUSTAINABLE** •
METAL ENVELOPE SYSTEMS SINCE 1988

WWW.DMIMETALS.COM

Detail:

DL20 04-00-IA

Issue/Rev Date:

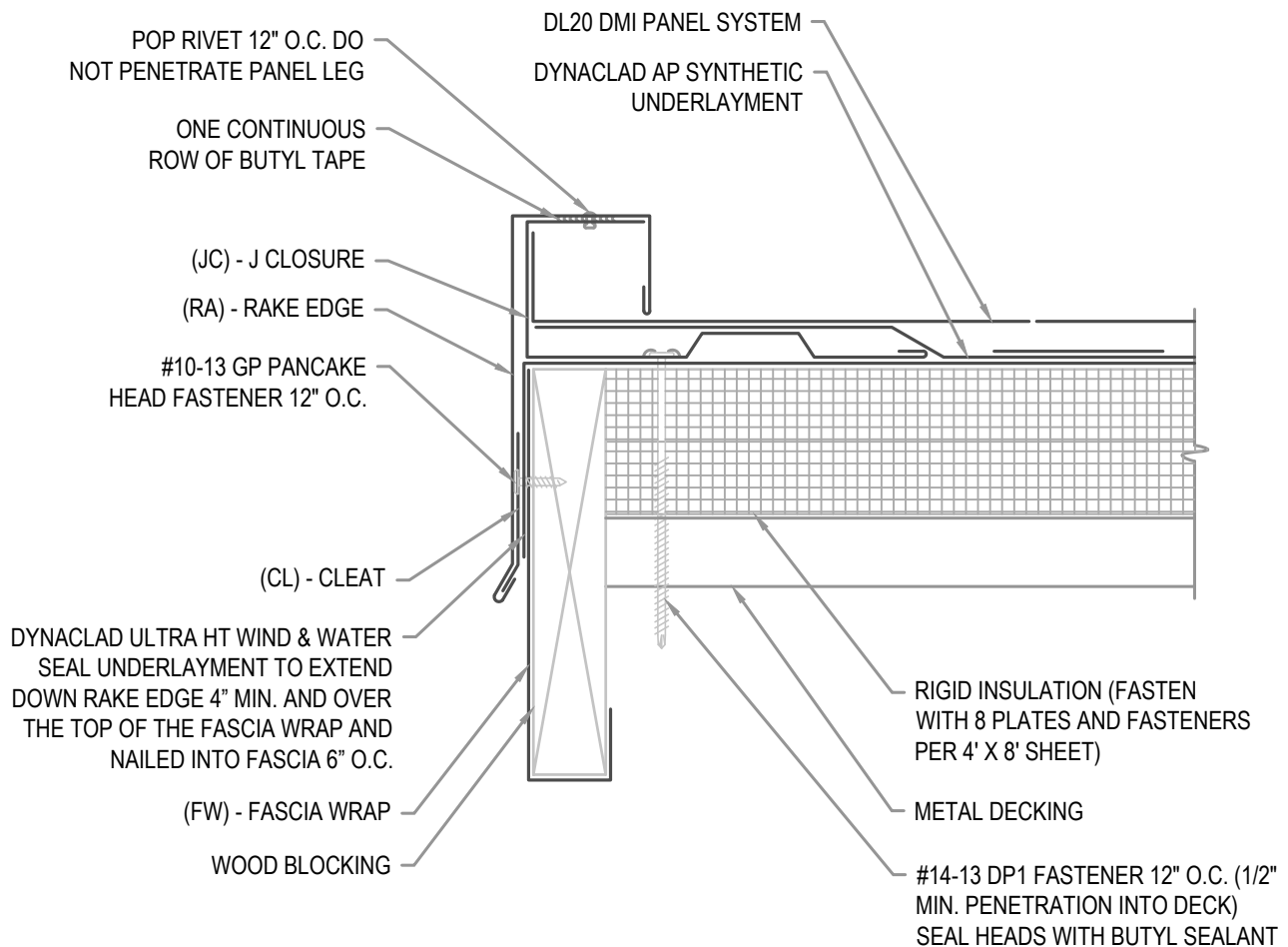
01/17

Scale:

3"=1'-0"

FLASHING LAP NOTE

LAP RAKE EDGE AND FASCIA 2" MINIMUM WITH 2 ROWS OF BUTYL SEALANT.



ARCHITECTURAL RAKE EDGE

• **PROVEN** • **DEPENDABLE** • **SUSTAINABLE** •
METAL ENVELOPE SYSTEMS SINCE 1988

WWW.DMIMETALS.COM

Detail:

DL20 04-01-IA

Issue/Rev Date:

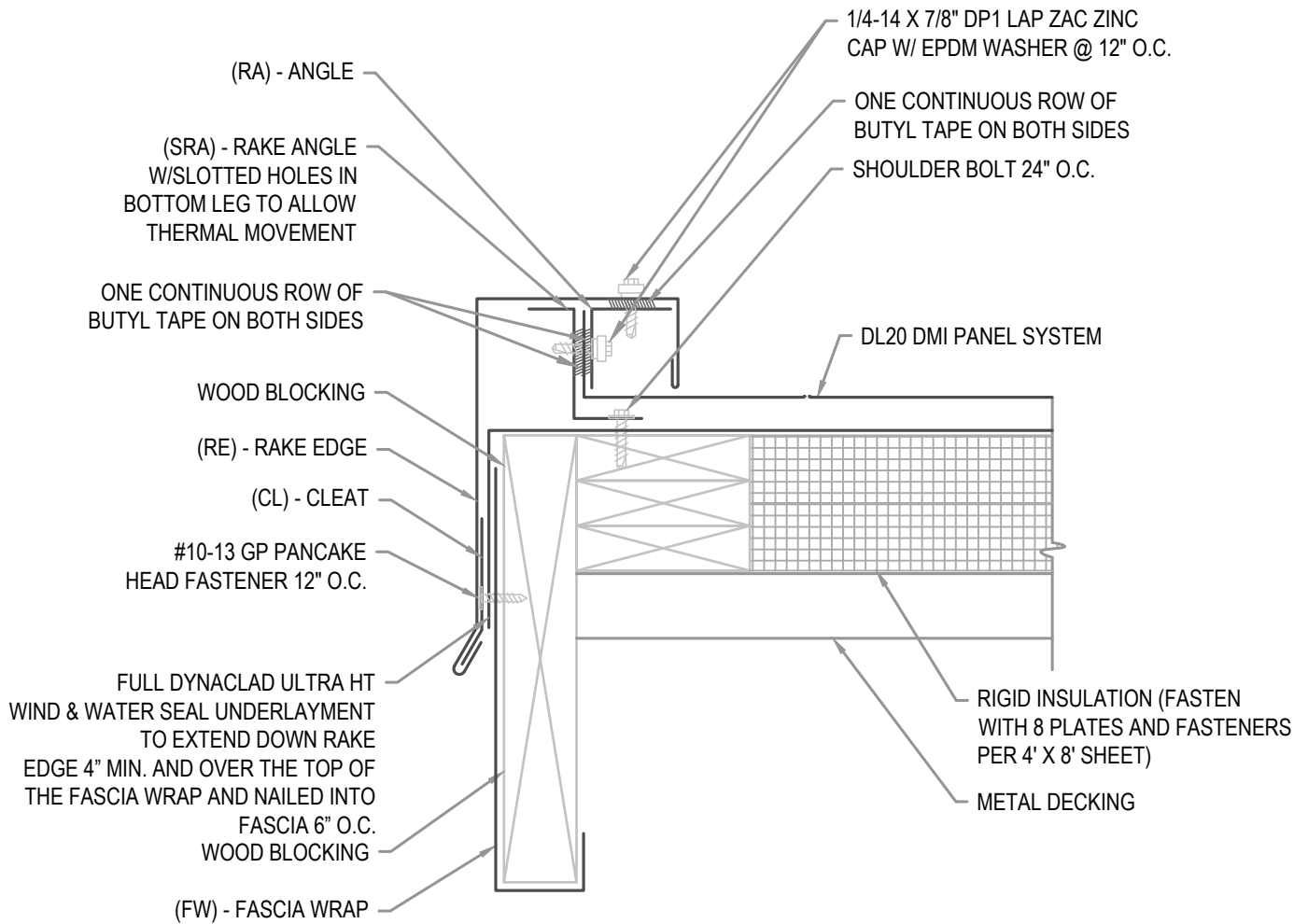
01/17

Scale:

3"=1'-0"

FLASHING LAP NOTE

LAP RAKE EDGE AND FASCIA 2" MINIMUM WITH 2 ROWS OF BUTYL SEALANT.



ARCHITECTURAL RAKE EDGE

• **PROVEN** • **DEPENDABLE** • **SUSTAINABLE** •
METAL ENVELOPE SYSTEMS SINCE 1988

WWW.DMIMETALS.COM

Detail:

DL20 04-02-IA

Issue/Rev Date:

01/17

Scale:

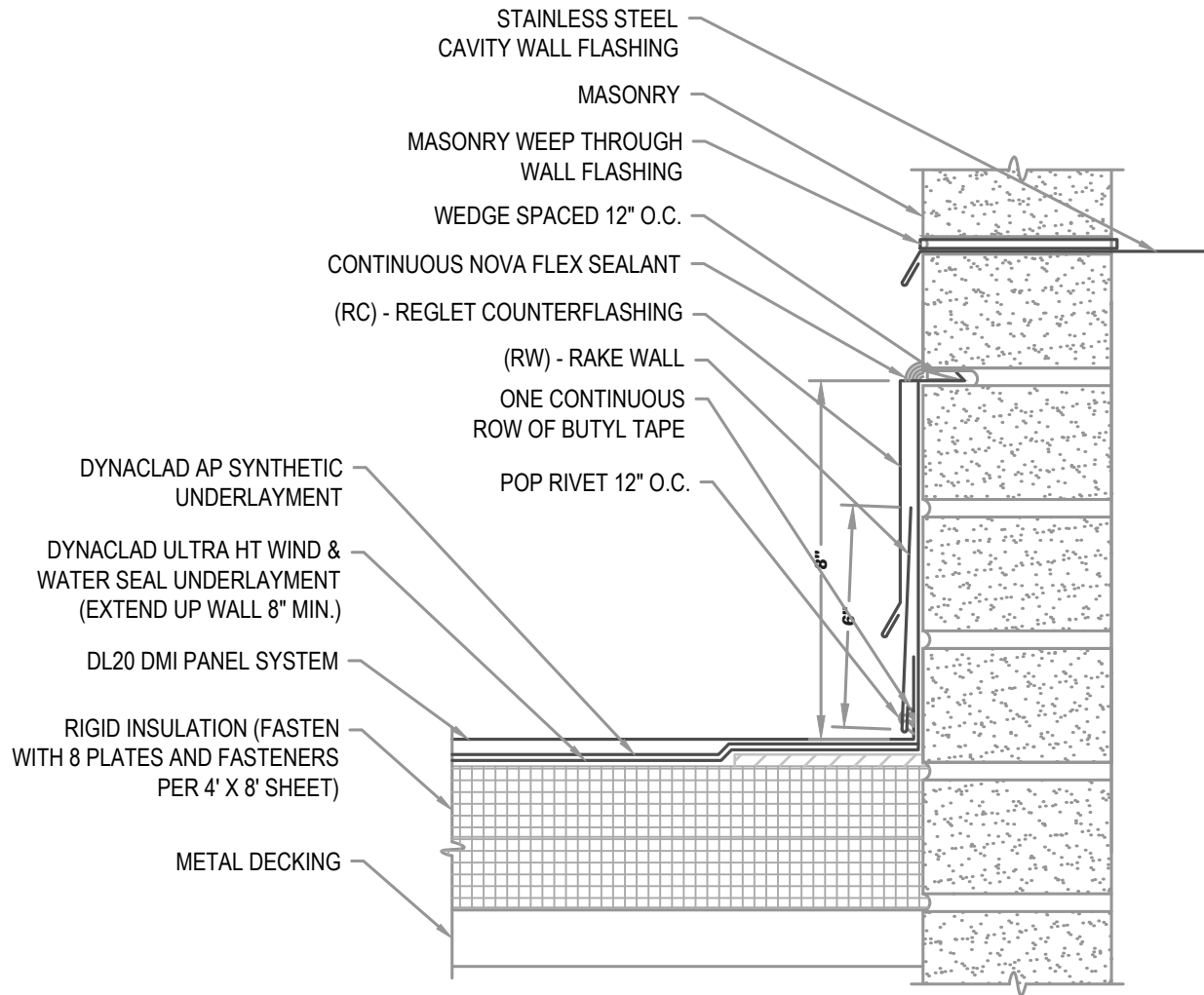
3"=1'-0"

NOTE

REGLET FLASHING TO BE INSTALLED BELOW ALL WEEP HOLES.
SURFACED MOUNT COUNTERFLASHINGS NOT ACCEPTABLE..

FLASHING LAP NOTE

LAP RAKE WALL REGLET 2" MINIMUM WITH 2 ROWS OF BUTYL SEALANT.



ARCHITECTURAL RAKE WALL

• **PROVEN** • **DEPENDABLE** • **SUSTAINABLE** •
METAL ENVELOPE SYSTEMS SINCE 1988

WWW.DMIMETALS.COM

Detail:

DL20 05-00-IA

Issue/Rev Date:

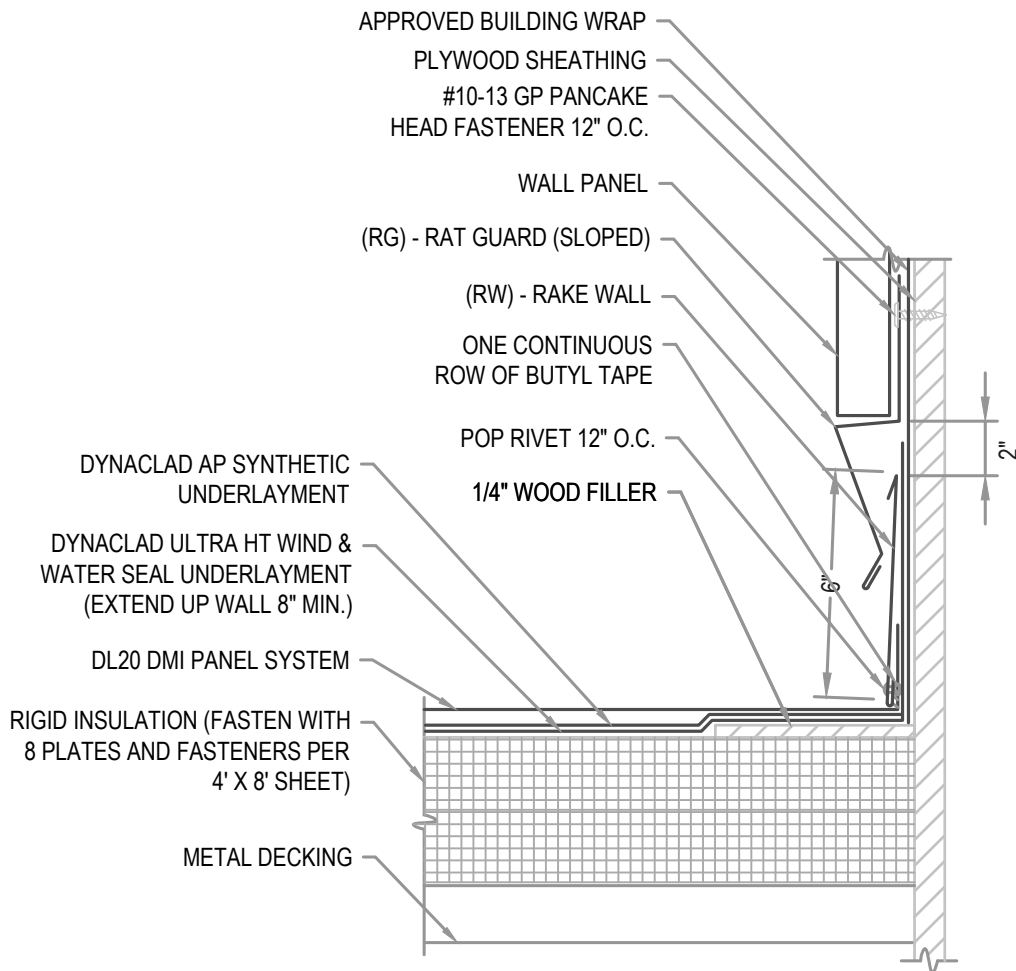
01/17

Scale:

3"=1'-0"

FLASHING LAP NOTE

LAP RAKE WALL AND RAT GUARD (SLOPED) 2" MINIMUM WITH 2 ROWS OF BUTYL SEALANT.



ARCHITECTURAL RAKE WALL

• **PROVEN** • **DEPENDABLE** • **SUSTAINABLE** •

METAL ENVELOPE SYSTEMS SINCE 1988

WWW.DMIMETALS.COM

Detail:

DL20 05-01-IA

Issue/Rev Date:

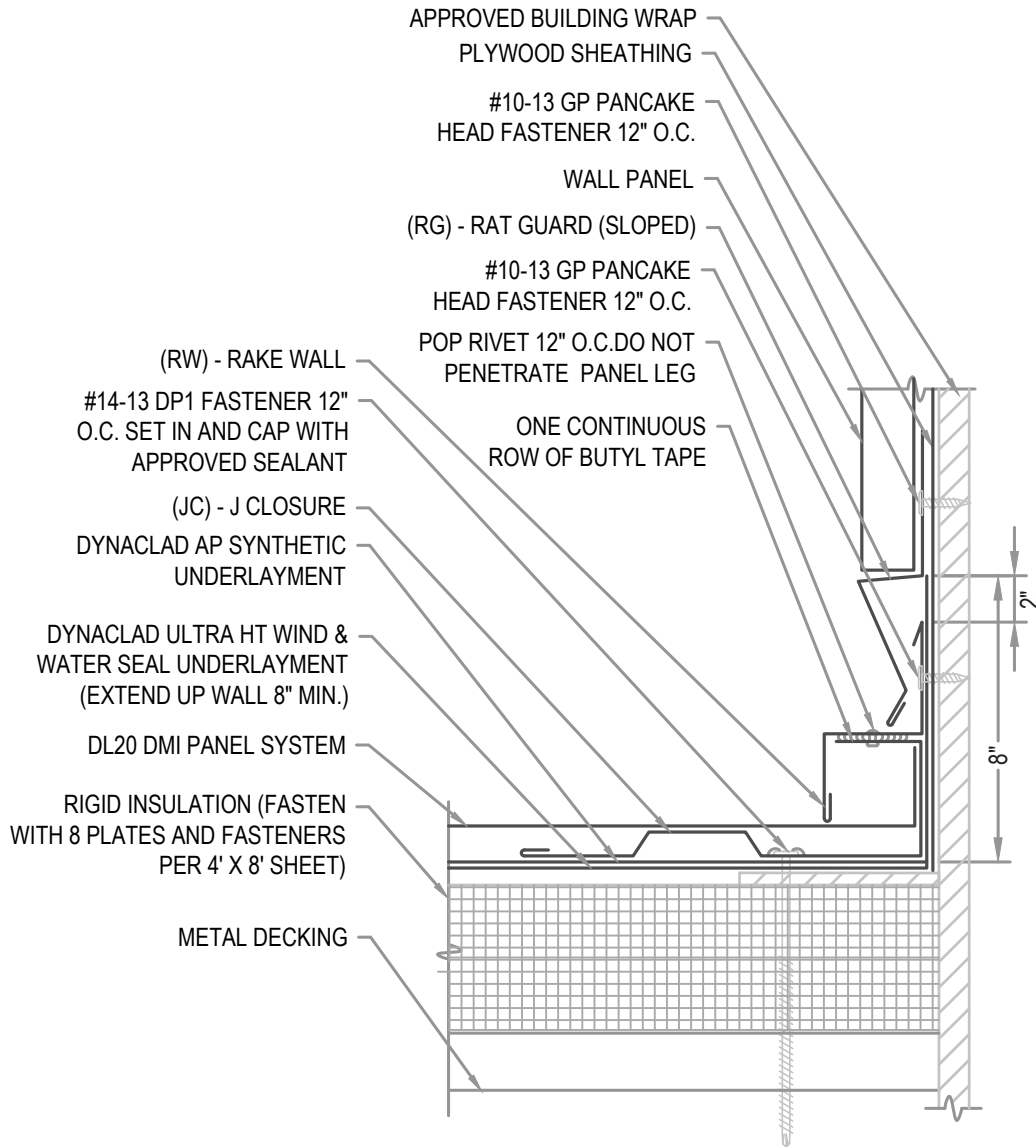
01/17

Scale:

3"=1'-0"

FLASHING LAP NOTE

LAP RAKE WALL AND RAT GUARD (SLOPED) 2" MINIMUM WITH 2 ROWS OF BUTYL SEALANT.



ARCHITECTURAL RAKE WALL

• **PROVEN** • **DEPENDABLE** • **SUSTAINABLE** •
METAL ENVELOPE SYSTEMS SINCE 1988

WWW.DMIMETALS.COM

Detail:

DL20 05-02-IA

Issue/Rev Date:

01/17

Scale:

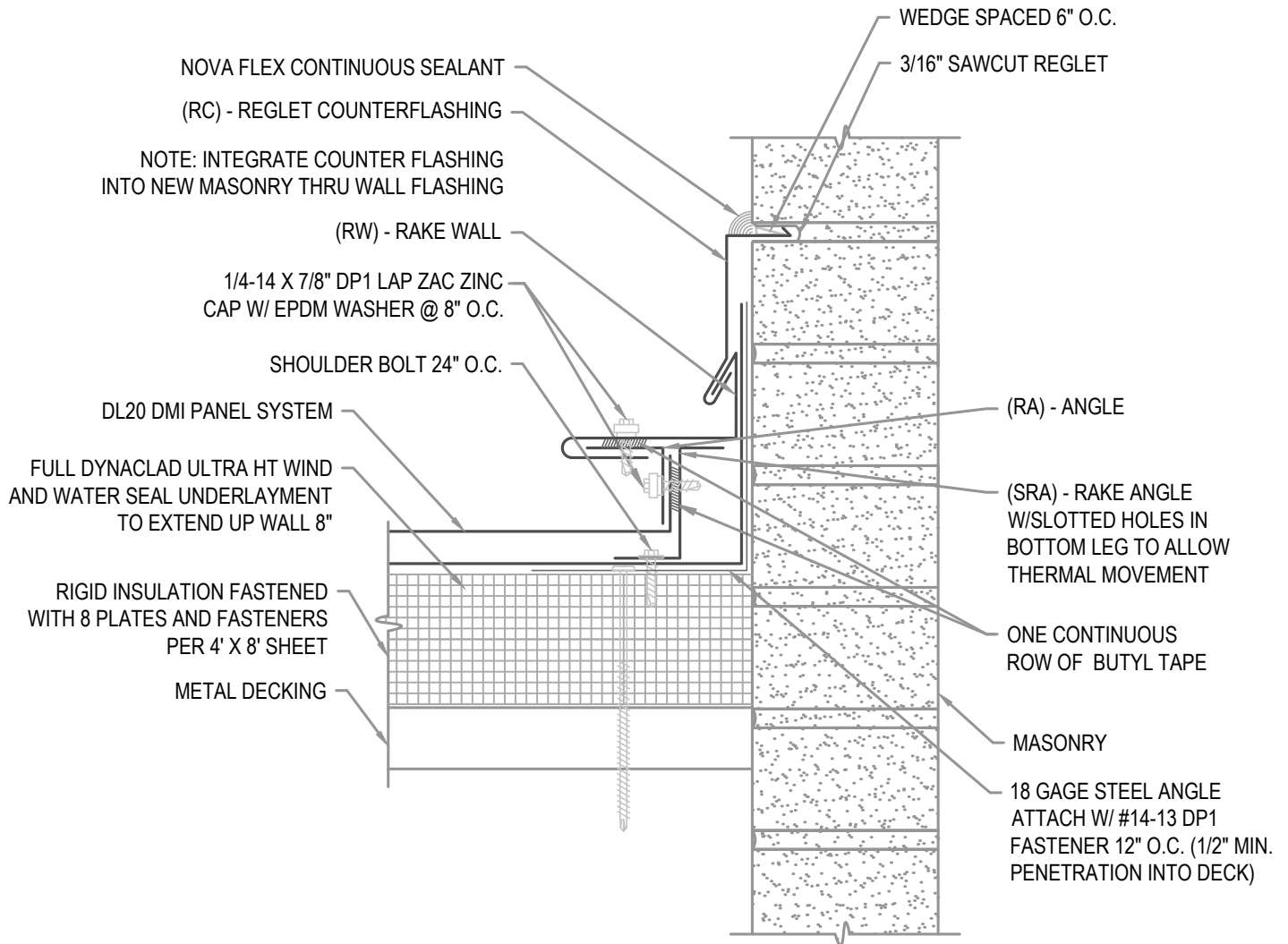
3"=1'-0"

NOTE

REGLET FLASHING TO BE INSTALLED BELOW ALL WEEP HOLES.
SURFACED MOUNT COUNTERFLASHINGS NOT ACCEPTABLE..

FLASHING LAP NOTE

LAP RAKE WALL REGLET 2" MINIMUM WITH 2 ROWS OF BUTYL SEALANT.



ARCHITECTURAL RAKE WALL

• **PROVEN** • **DEPENDABLE** • **SUSTAINABLE** •
METAL ENVELOPE SYSTEMS SINCE 1988

WWW.DMIMETALS.COM

Detail:

DL20 05-03-IA

Issue/Rev Date:

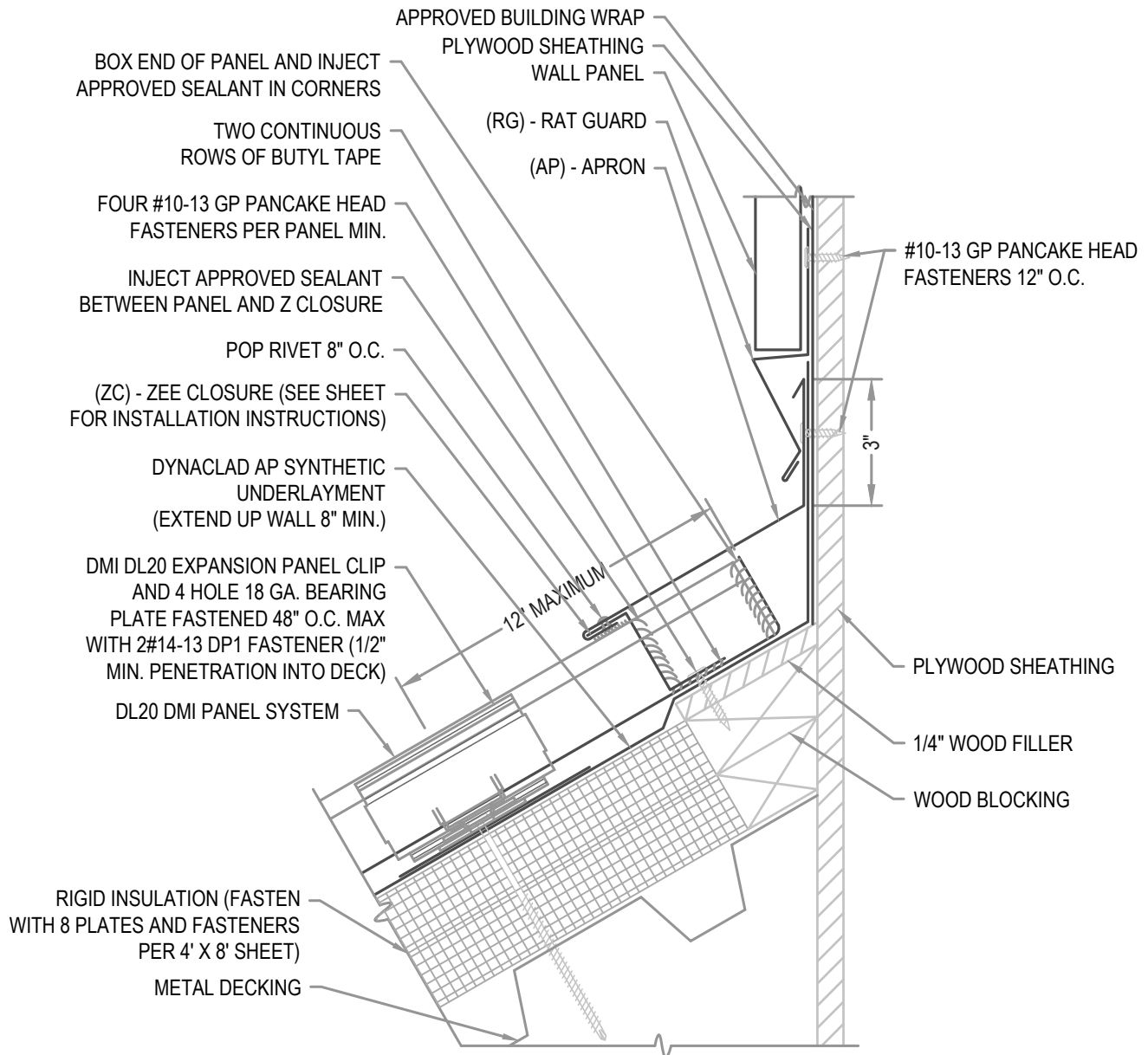
01/17

Scale:

3"=1'-0"

FLASHING LAP NOTE

LAP APRON AND RAT GUARD (SLOPED) 2" MINIMUM WITH 2 ROWS OF BUTYL SEALANT.



ARCHITECTURAL APRON W/ WALL PANEL

• **PROVEN** • **DEPENDABLE** • **SUSTAINABLE** •
METAL ENVELOPE SYSTEMS SINCE 1988

WWW.DMIMETALS.COM

Detail:

DL20 06-00-IA

Issue/Rev Date:

01/17

Scale:

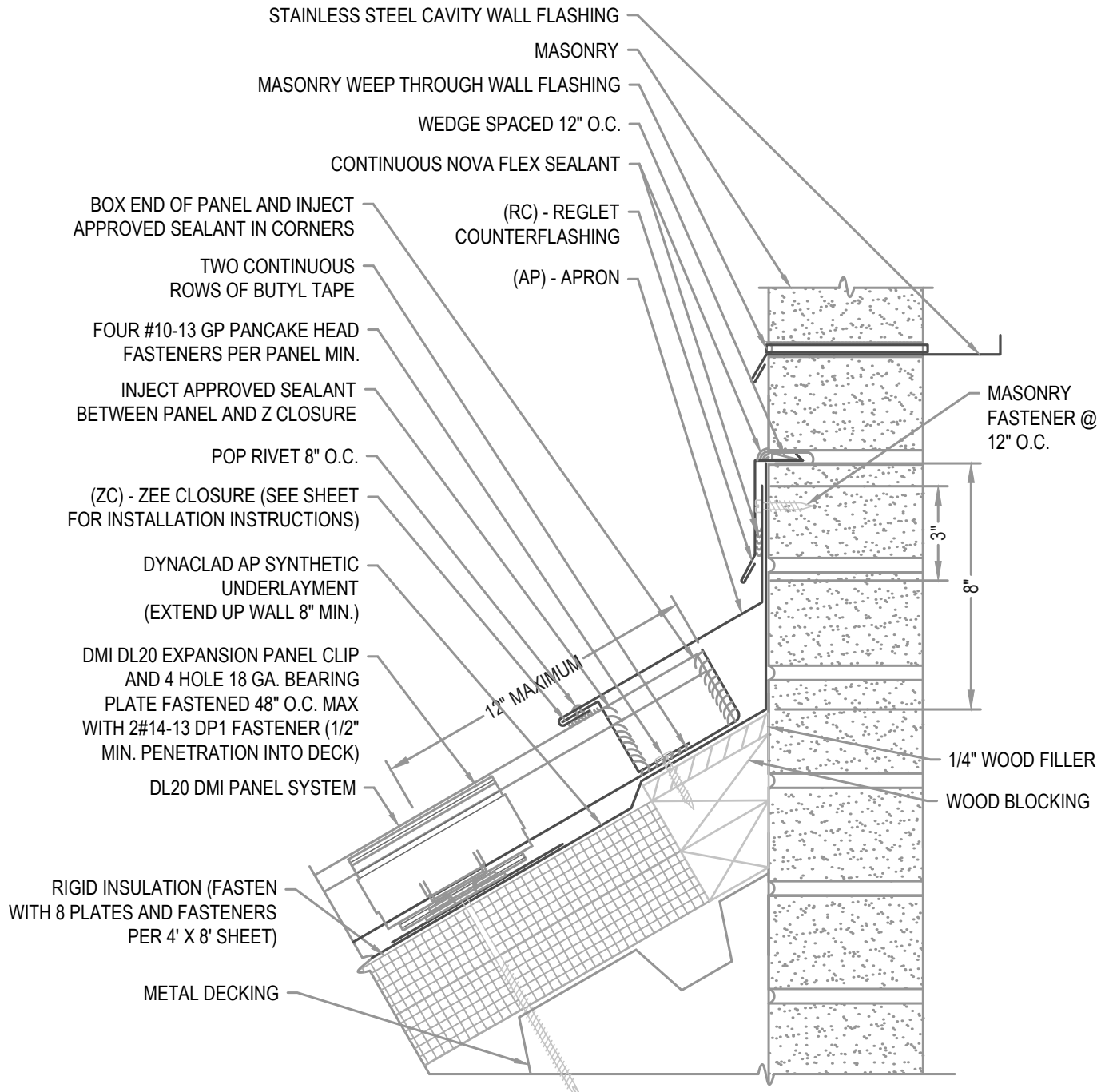
3"=1'-0"

NOTE

REGLET FLASHING TO BE INSTALLED BELOW ALL WEEP HOLES.
SURFACED MOUNT COUNTERFLASHINGS NOT ACCEPTABLE..

FLASHING LAP NOTE

LAP APRON AND REGLET 2" MINIMUM WITH 2 ROWS OF BUTYL SEALANT.



ARCHITECTURAL APRON

• **PROVEN** • **DEPENDABLE** • **SUSTAINABLE** •
METAL ENVELOPE SYSTEMS SINCE 1988

WWW.DMIMETALS.COM

Detail:

DL20 06-01-IA

Issue/Rev Date:

01/17

Scale:

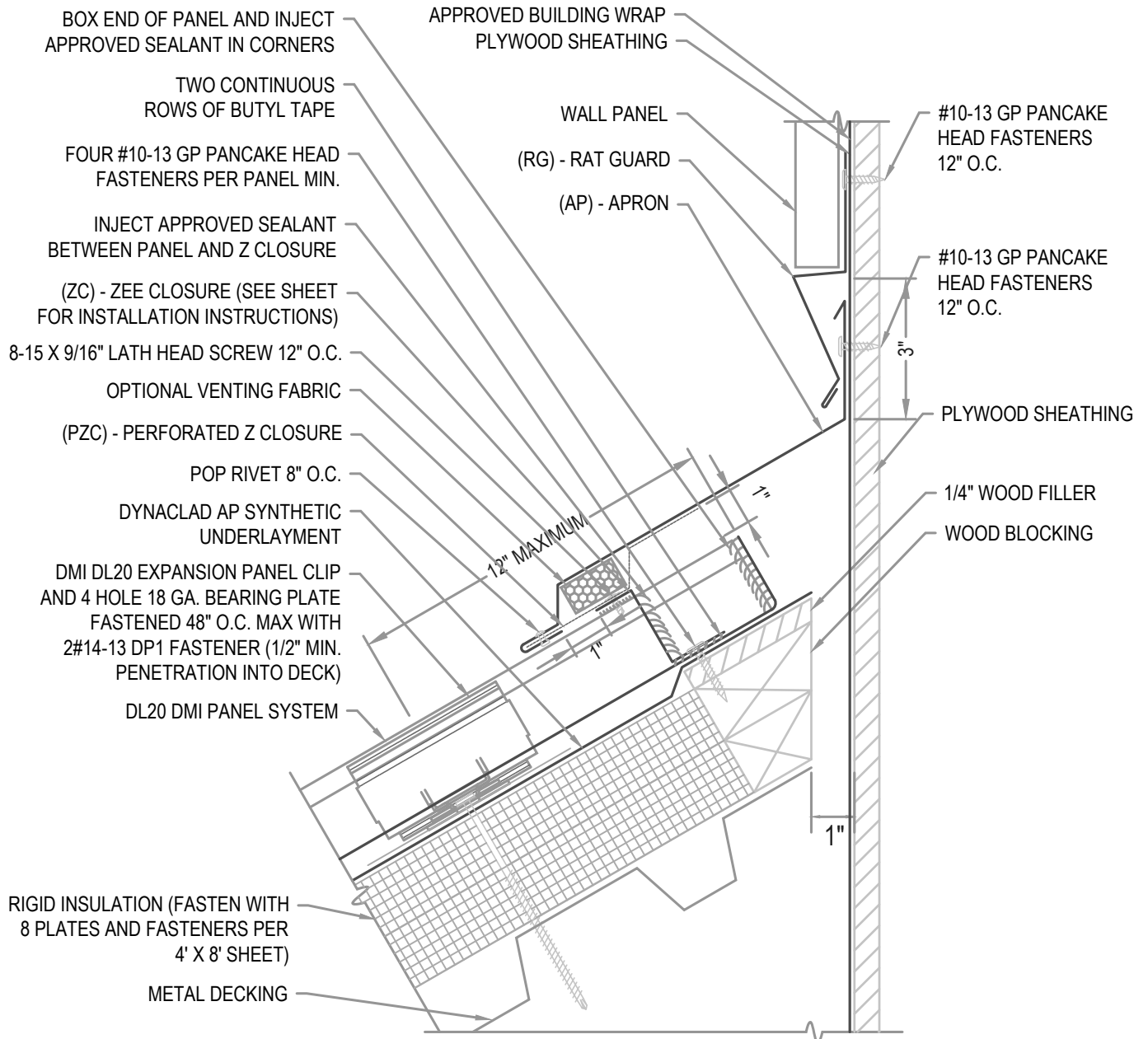
3"=1'-0"

FLASHING LAP NOTE

LAP APRON AND RAT GUARD (SLOPED) 2" MIN W/ 2 ROWS OF BUTYL SEALANT.
DO NOT POP RIVET LAPPED FLASHINGS.

VENTILATION NOTE

DMI PERFORATED Z CLOSURE PROVIDES 23% NET FREE AIR MOVEMENT.



ARCHITECTURAL VENTED APRON

• PROVEN • DEPENDABLE • SUSTAINABLE •
METAL ENVELOPE SYSTEMS SINCE 1988

WWW.DMIMETALS.COM

Detail:

DL20 06-02-IA

Issue/Rev Date:

01/17

Scale:

3"=1'-0"

NOTE

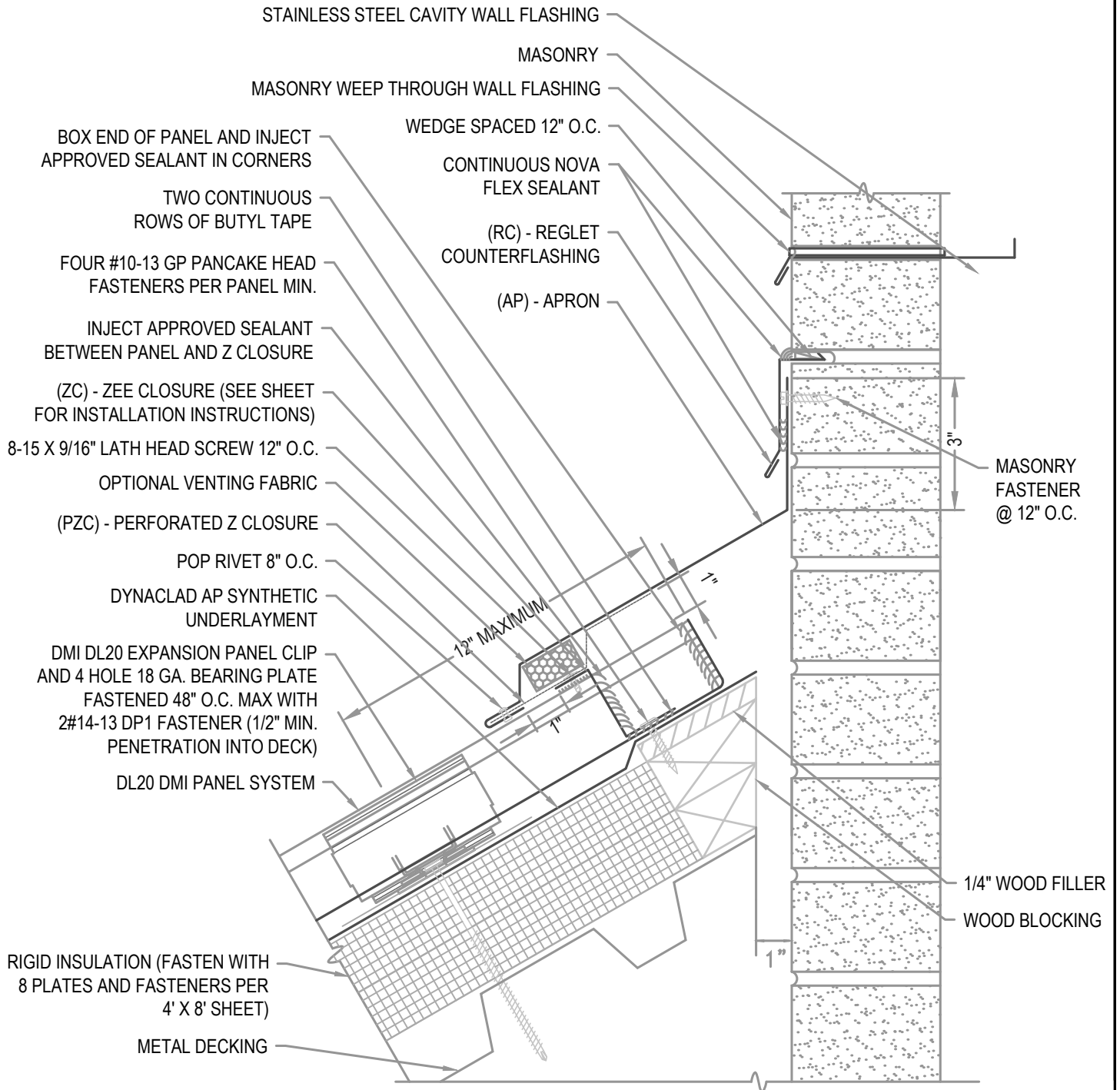
REGLET FLASHING TO BE INSTALLED BELOW ALL WEEP HOLES.
SURFACED MOUNT COUNTERFLASHINGS NOT ACCEPTABLE..

FLASHING LAP NOTE

LAP APRON AND RAT GUARD (SLOPED) 2" MIN W/ 2 ROWS OF BUTYL SEALANT.
DO NOT POP RIVET LAPPED FLASHINGS.

VENTILATION NOTE

DMI PERFORATED Z CLOSURE PROVIDES 23% NET FREE AIR MOVEMENT.



ARCHITECTURAL VENTED APRON

• **PROVEN** • **DEPENDABLE** • **SUSTAINABLE** •
METAL ENVELOPE SYSTEMS SINCE 1988

WWW.DMIMETALS.COM

Detail:

DL20 06-03-IA

Issue/Rev Date:

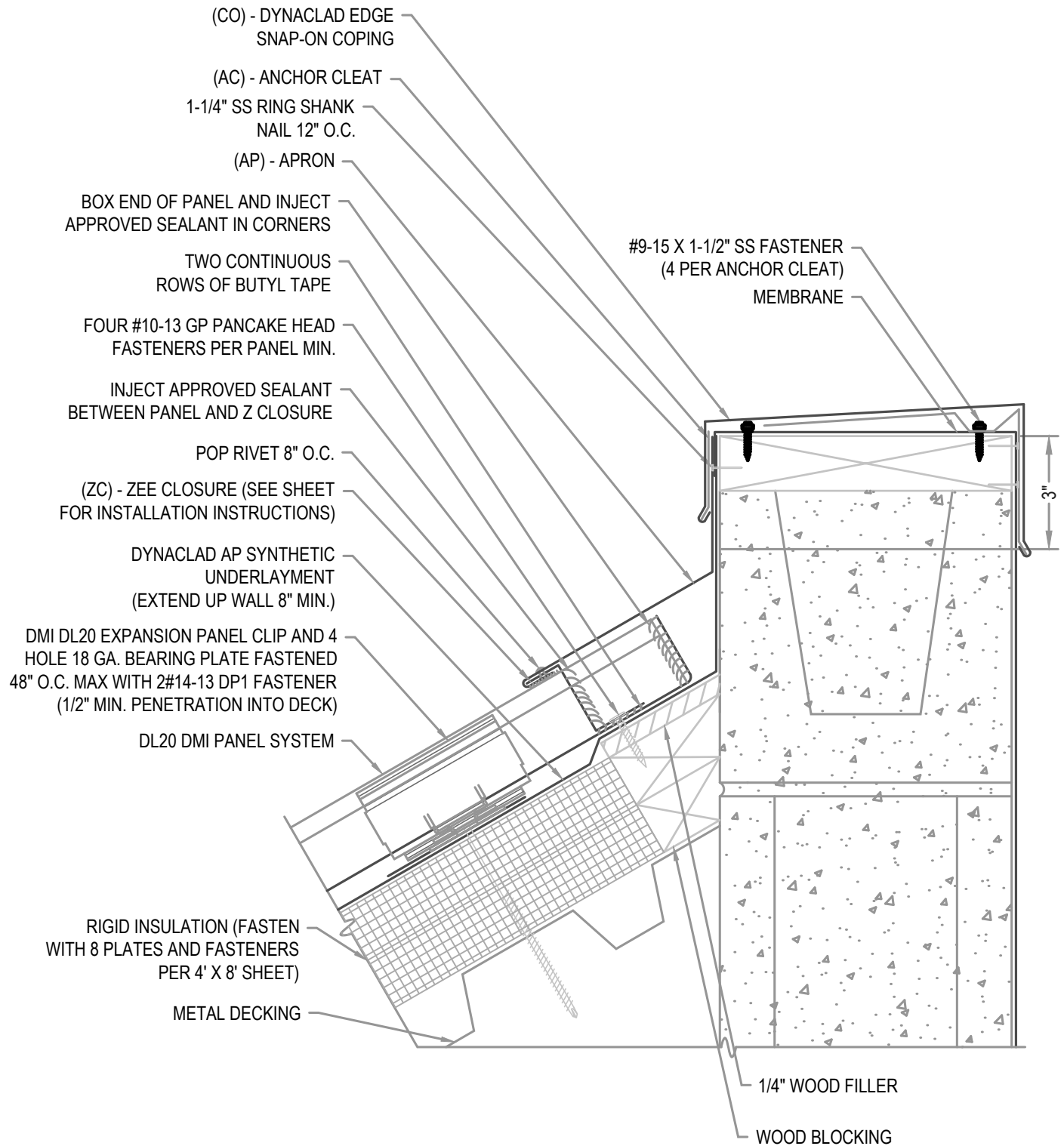
01/17

Scale:

3"=1'-0"

FLASHING LAP NOTE

LAP APRON AND REGLET 2" MINIMUM WITH 2 ROWS OF BUTYL SEALANT.



ARCHITECTURAL APRON W/ COPING

• **PROVEN** • **DEPENDABLE** • **SUSTAINABLE** •
METAL ENVELOPE SYSTEMS SINCE 1988

WWW.DMIMETALS.COM

Detail:

DL20 06-04-IA

Issue/Rev Date:

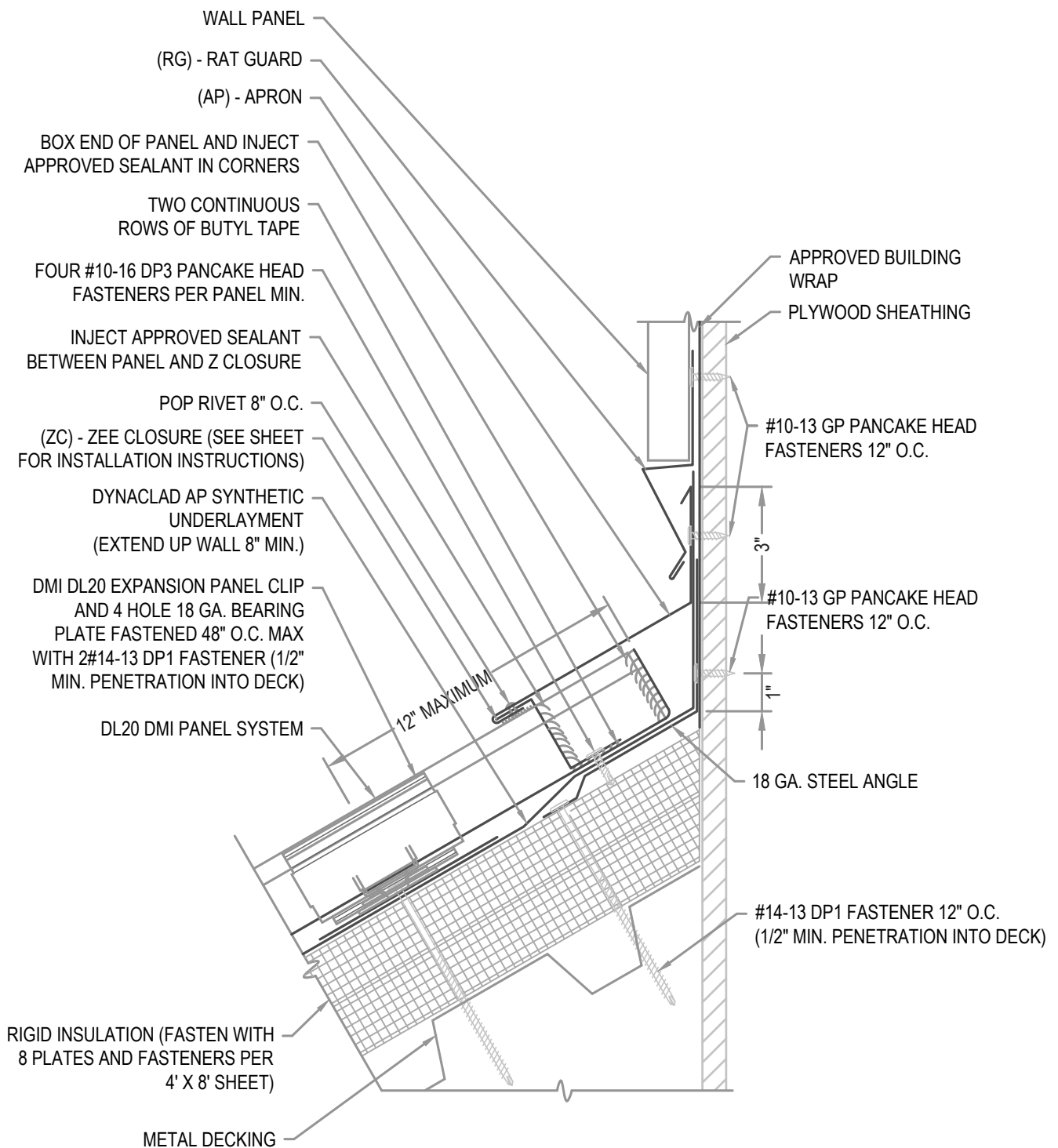
01/17

Scale:

3"=1'-0"

FLASHING LAP NOTE

LAP APRON AND RAT GUARD (SLOPED) 2" MINIMUM WITH 2 ROWS OF BUTYL SEALANT.



ARCHITECTURAL APRON W/ STEEL ANGLE

• **PROVEN** • **DEPENDABLE** • **SUSTAINABLE** •
METAL ENVELOPE SYSTEMS SINCE 1988

WWW.DMIMETALS.COM

Detail:

DL20 06-05-IA

Issue/Rev Date:

01/17

Scale:

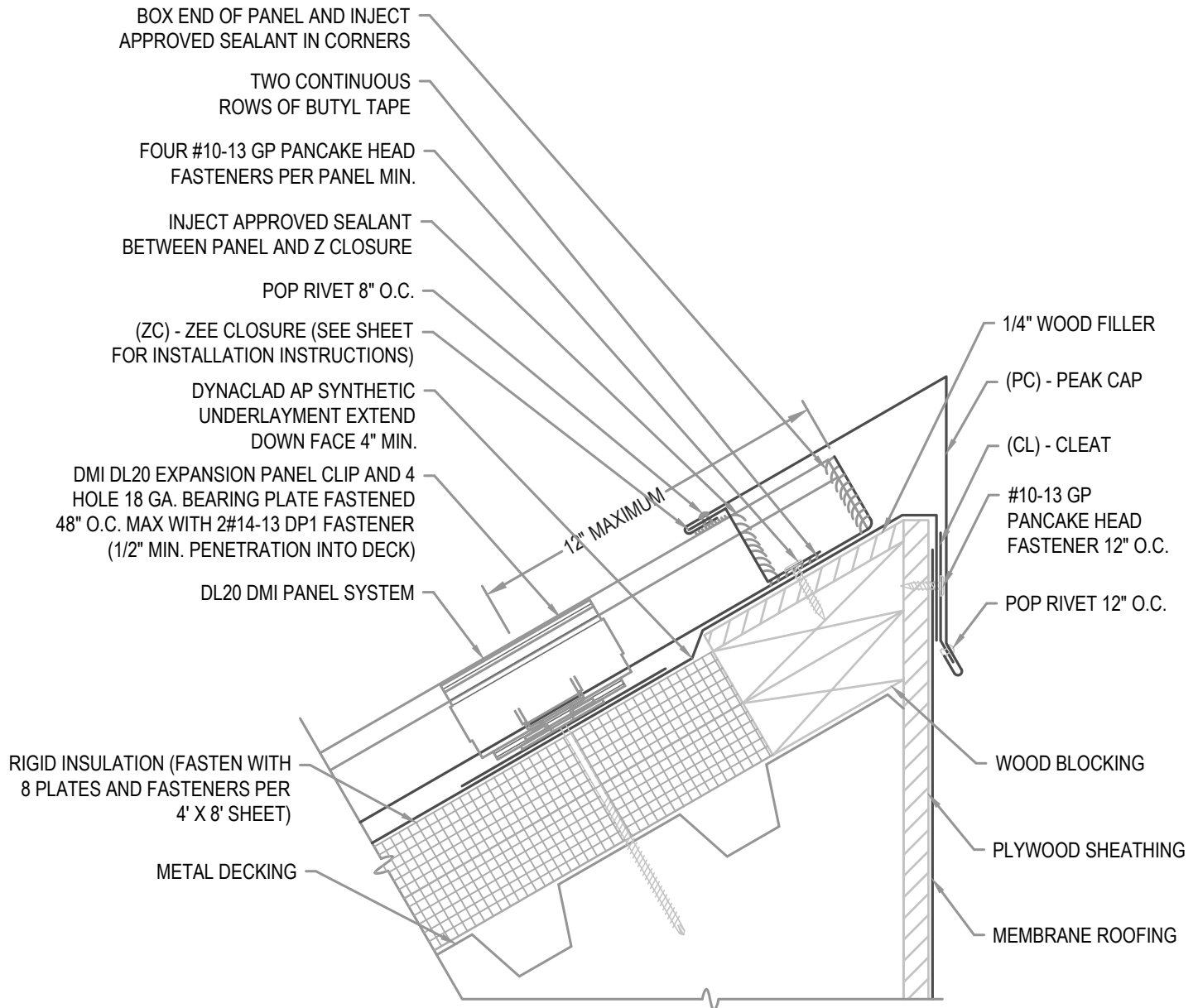
3"=1'-0"

EXPANSION NOTE

PEAK CAPS EXCEEDING 100'-0" IN LENGTH REQUIRE THE USE OF A 6" COVER PLATE.

FLASHING LAP NOTE

LAP PEAK AND CLEATS 2" MIN W/ 2 ROWS OF BUTYL SEALANT.
DO NOT POP RIVET LAPPED FLASHINGS.



ARCHITECTURAL PEAK

• **PROVEN** • **DEPENDABLE** • **SUSTAINABLE** •
METAL ENVELOPE SYSTEMS SINCE 1988

WWW.DMIMETALS.COM

Detail:

DL20 07-00-IA

Issue/Rev Date:

01/17

Scale:

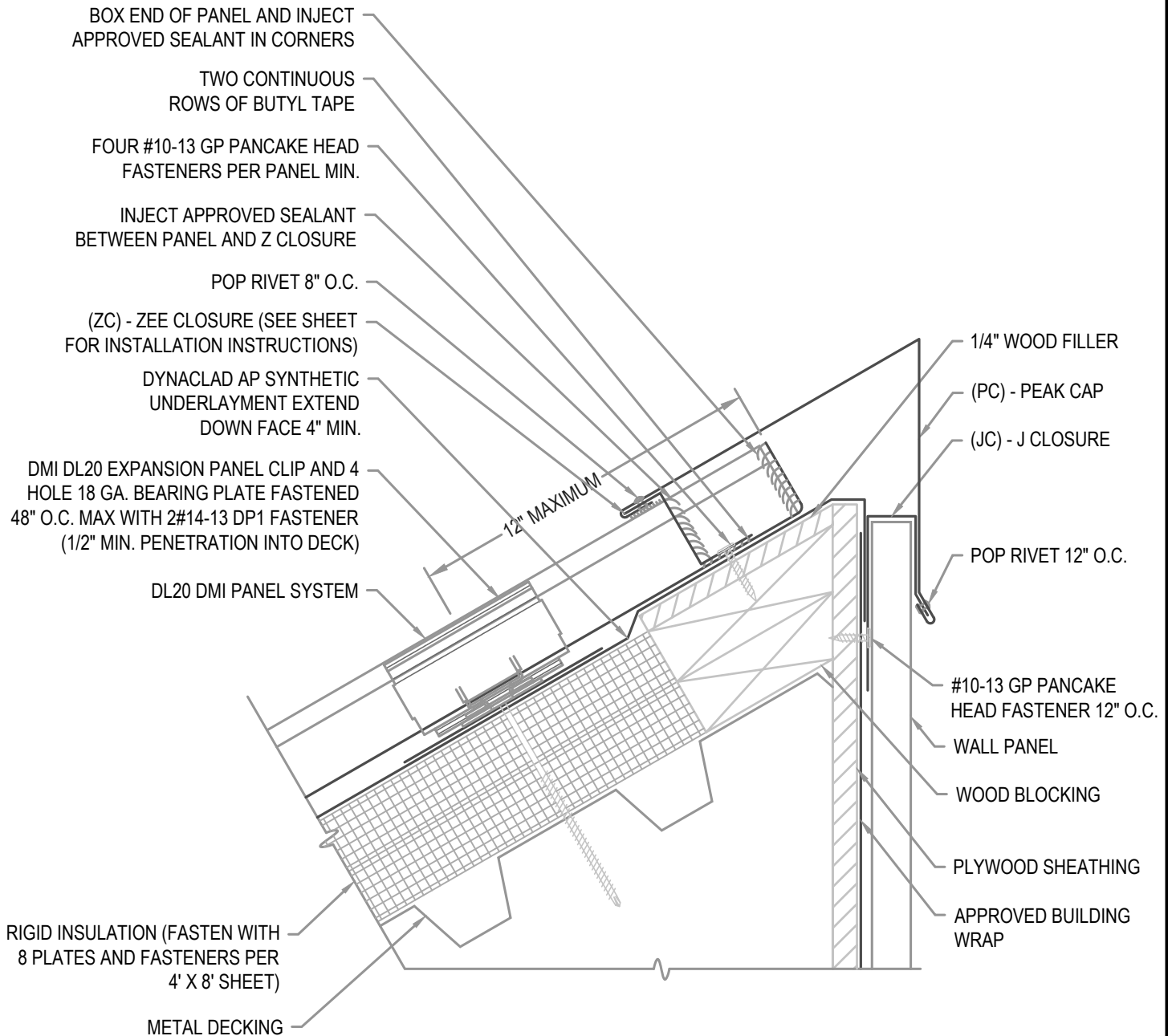
3"=1'-0"

EXPANSION NOTE

PEAK CAPS EXCEEDING 100'-0" IN LENGTH REQUIRE THE USE OF A 6" COVER PLATE.

FLASHING LAP NOTE

LAP PEAK AND CLEATS 2" MIN W/ 2 ROWS OF BUTYL SEALANT.
DO NOT POP RIVET LAPPED FLASHINGS.



ARCHITECTURAL PEAK W/ WALL PANEL

• **PROVEN** • **DEPENDABLE** • **SUSTAINABLE** •
METAL ENVELOPE SYSTEMS SINCE 1988

WWW.DMIMETALS.COM

Detail:

DL20 07-01-IA

Issue/Rev Date:

01/17

Scale:

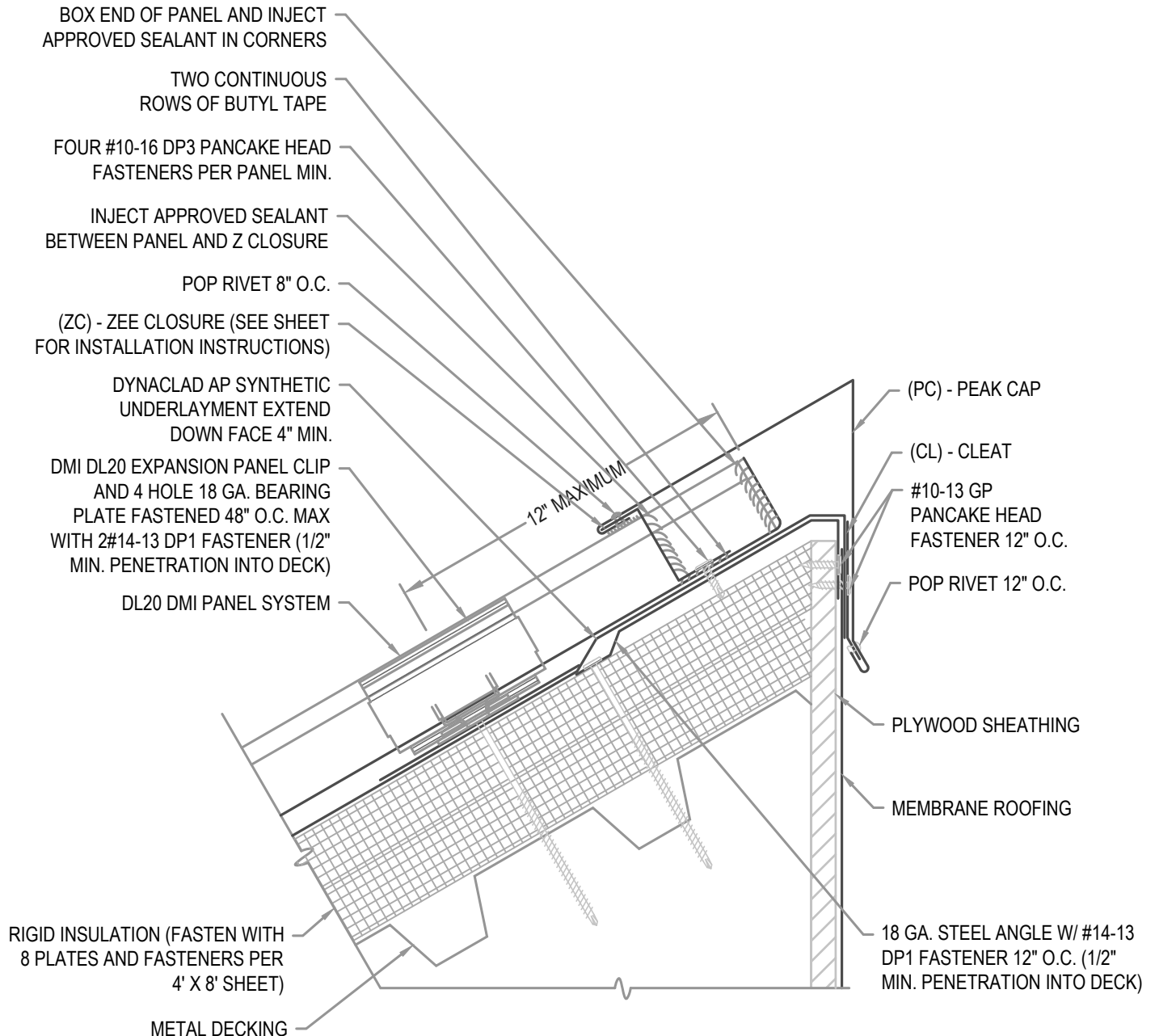
3"=1'-0"

EXPANSION NOTE

PEAK CAPS EXCEEDING 100'-0" IN LENGTH REQUIRE THE USE OF A 6" COVER PLATE.

FLASHING LAP NOTE

LAP PEAK AND CLEATS 2" MIN W/ 2 ROWS OF BUTYL SEALANT.
DO NOT POP RIVET LAPPED FLASHINGS.



ARCHITECTURAL PEAK W/ STEEL ANGLE

• **PROVEN** • **DEPENDABLE** • **SUSTAINABLE** •
METAL ENVELOPE SYSTEMS SINCE 1988

WWW.DMIMETALS.COM

Detail:

DL20 07-02-IA

Issue/Rev Date:

01/17

Scale:

3"=1'-0"

LAP EXPANSION JOINT AND J CLOSURE 2" MINIMUM WITH 2 ROWS OF BUTYL SEALANT.



● PROVEN ● DEPENDABLE ● SUSTAINABLE ●
METAL ENVELOPE SYSTEMS SINCE 1988

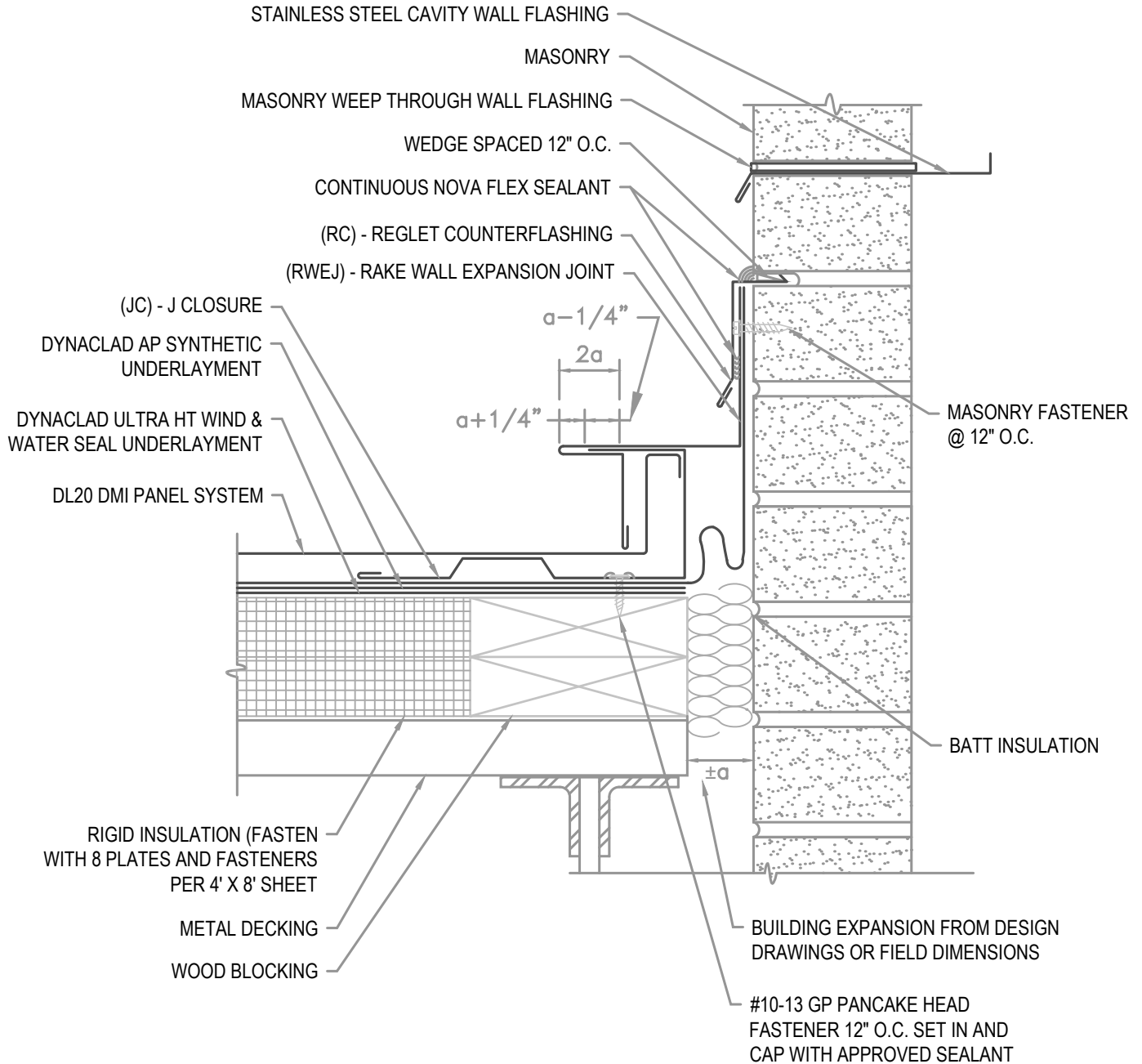
 $3'' = 1' - 0''$

NOTE

REGLET FLASHING TO BE INSTALLED BELOW ALL WEEP HOLES.
SURFACED MOUNT COUNTERFLASHINGS NOT ACCEPTABLE.

FLASHING LAP NOTE

LAP RAKE WALL AND REGLET 2" MINIMUM WITH 2 ROWS OF BUTYL SEALANT.

**ARCHITECTURAL EXPANSION JOINT**

• **PROVEN** • **DEPENDABLE** • **SUSTAINABLE** •
METAL ENVELOPE SYSTEMS SINCE 1988

WWW.DMIMETALS.COM

Detail:

DL20 08-01-IA

Issue/Rev Date:

01/17

Scale:

3"=1'-0"

PANEL EXPANSION NOTE

FOR STEEL PANELS < 40' WITH A 1 1/2" TURN DOWN AND 1 1/2" HEM CLEARANCE:

1. 1/4" FOR INSTALLATION TEMPERATURE BELOW 30 DEGREES FARENHEIT
2. 1/2" FOR INSTALLATION TEMPERATURE ABOVE 30 DEGREES FARENHEIT..

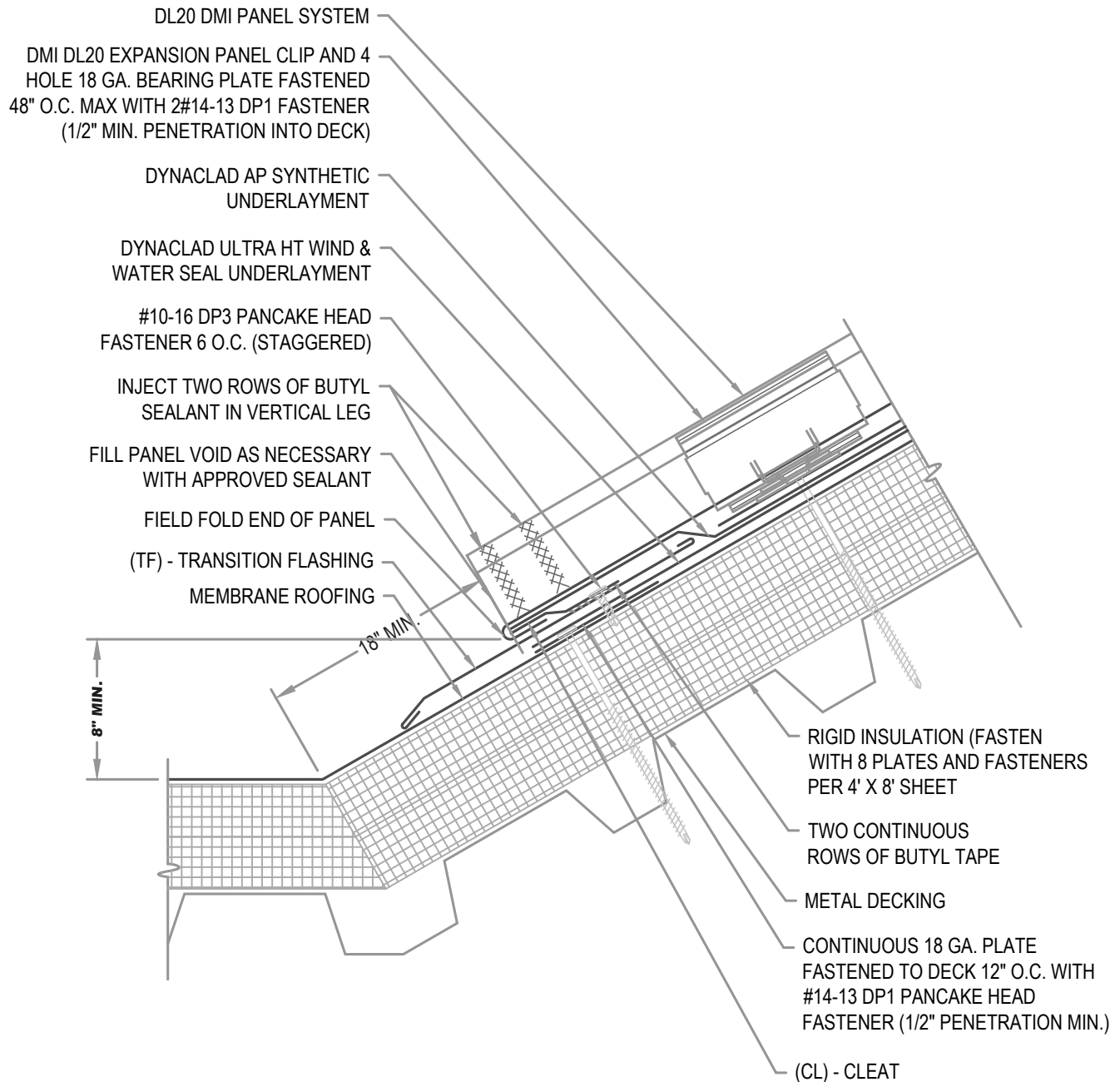
FOR STEEL PANELS > 40' WITH A 2" TURN DOWN AND 2" HEM CLEARANCE:

1. 1/4" FOR INSTALLATION TEMPERATURE BELOW 30 DEGREES FARENHEIT.
2. 1/2" FOR INSTALLATION TEMPERATURE ABOVE 30 DEGREES FARENHEIT.

FOR ALUMINUM PANELS - CONTACT DMI

FLASHING LAP NOTE

LAP FLASHINGS 2" MIN W/ 1 ROW OF BUTYL SEALANT.



ARCHITECTURAL TRANSITION

• **PROVEN** • **DEPENDABLE** • **SUSTAINABLE** •
METAL ENVELOPE SYSTEMS SINCE 1988

WWW.DMIMETALS.COM

Detail:

DL20 09-00-IA

Issue/Rev Date:

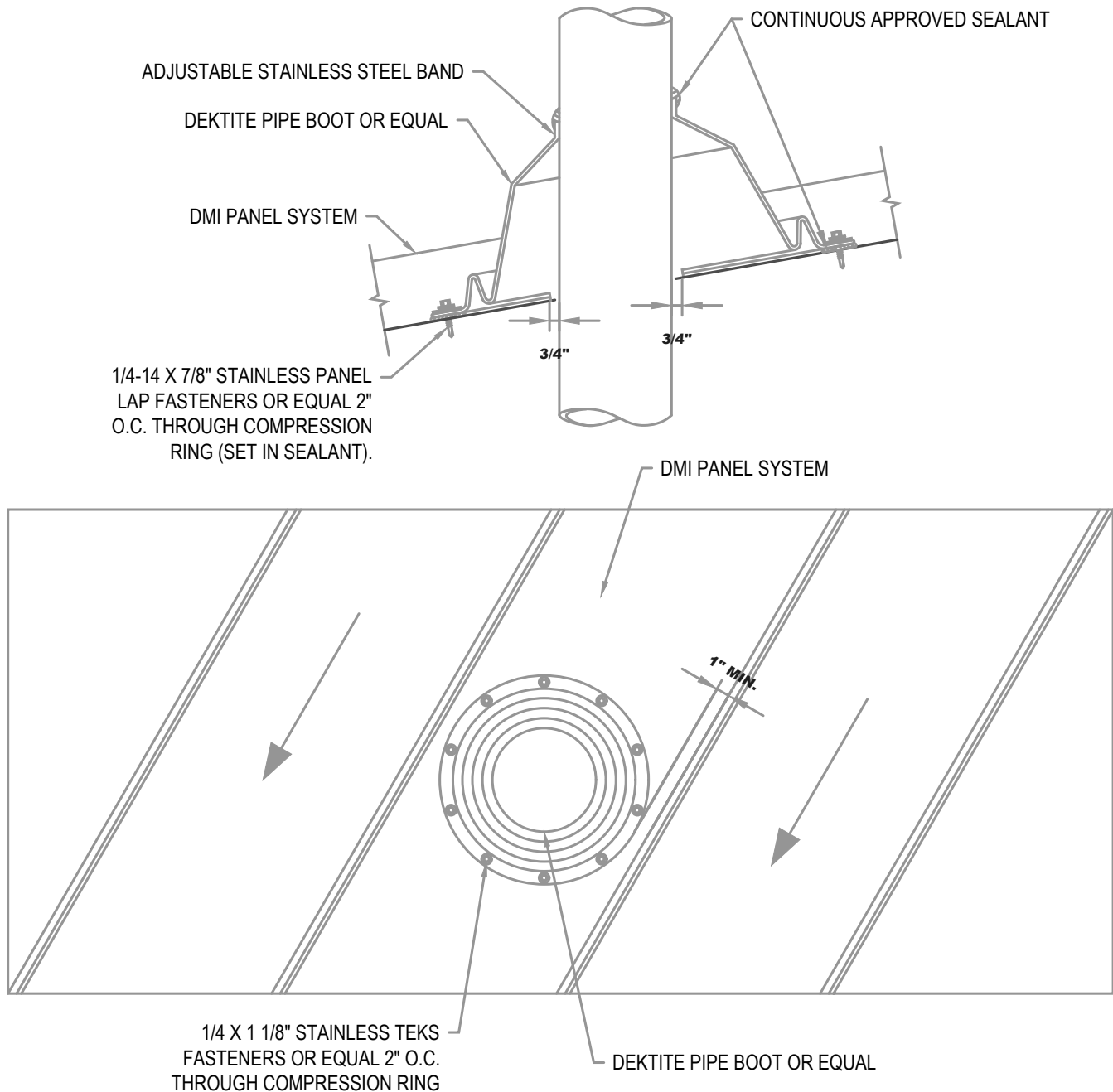
01/17

Scale:

3"=1'-0"

NOTE

DO NOT ATTACH INTO SOLID SUBSTRATE BELOW.
BOOT SHALL NOT INTERSECT STANDING SEAM VERTICAL LEG. INSTALL IN FLAT AREA
OF PANEL ONLY.
IF USING A SQUARE BOOT DETAIL BE SURE TO SET BOOT IN A DIAGONAL OR DIAMOND
TO ALLOW WATER FLOW.



ARCHITECTURAL PIPE BOOT DETAIL

• **PROVEN** • **DEPENDABLE** • **SUSTAINABLE** •
METAL ENVELOPE SYSTEMS SINCE 1988

WWW.DMIMETALS.COM

Detail:

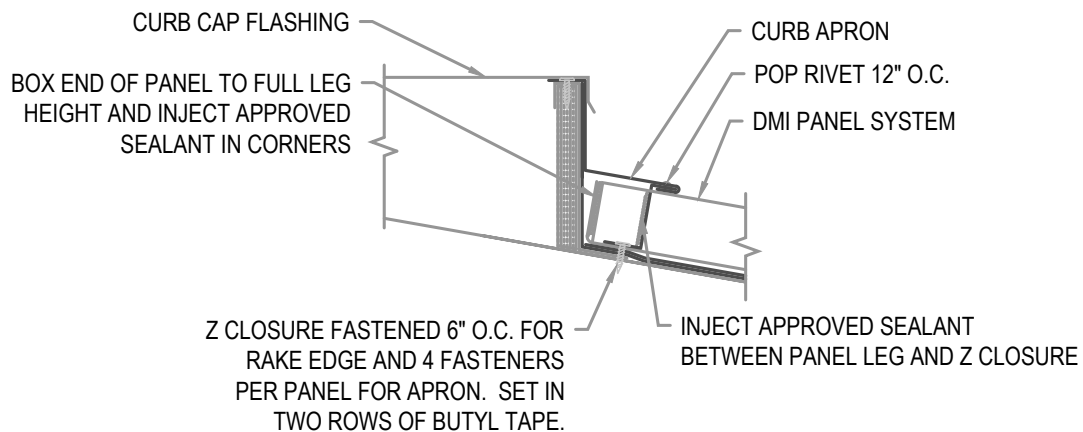
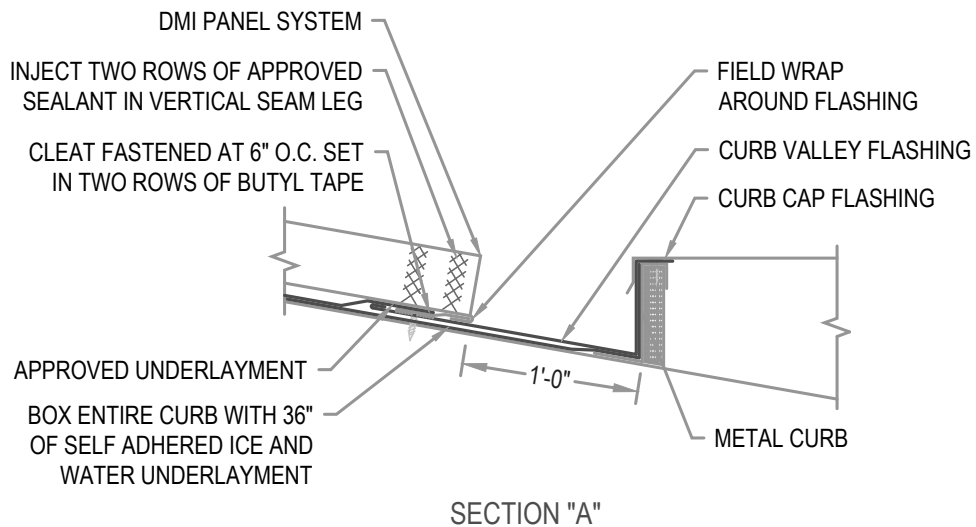
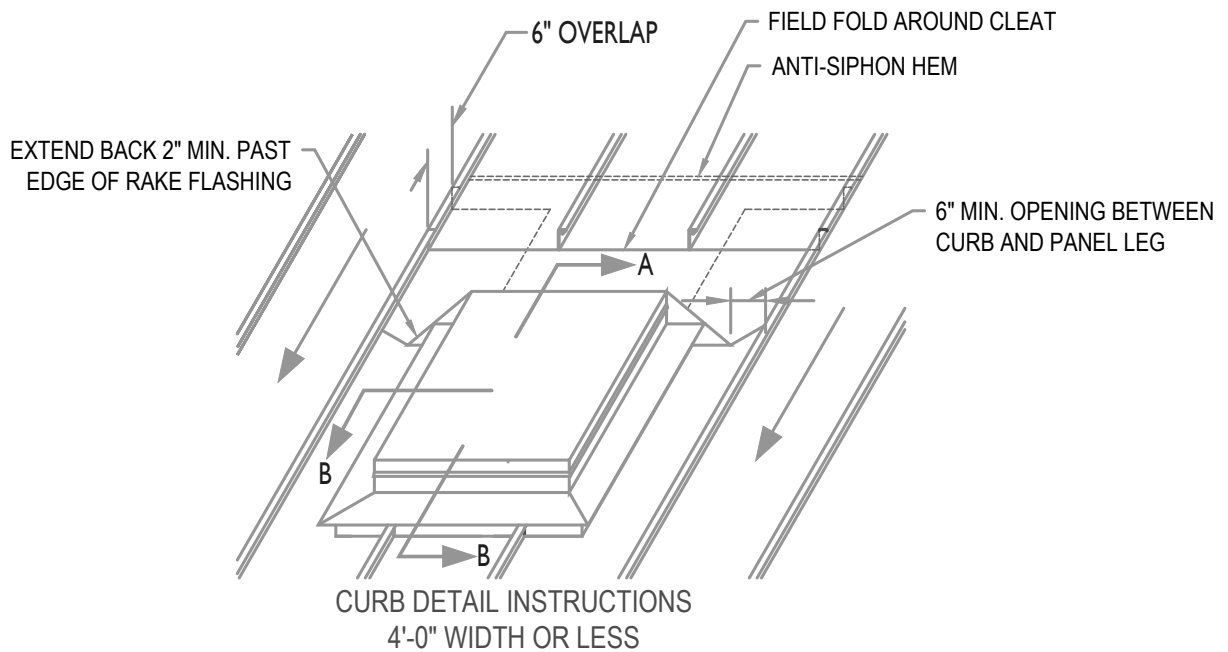
DL20 10-00-IA

Issue/Rev Date:

01/17

Scale:

3"=1'-0"



ARCHITECTURAL CURB

• **PROVEN** • **DEPENDABLE** • **SUSTAINABLE** •
METAL ENVELOPE SYSTEMS SINCE 1988
WWW.DMIMETALS.COM

Detail:

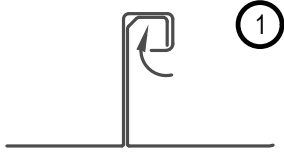
DL20 11-00-IA

Issue/Rev Date:

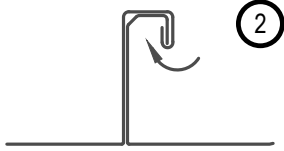
01/17

Scale:

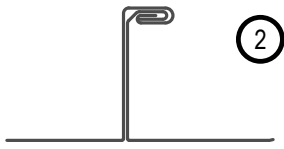
3"=1'-0"



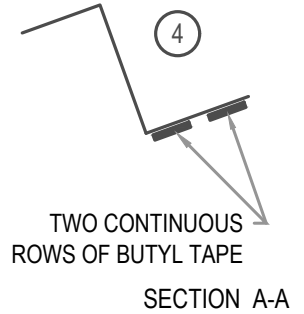
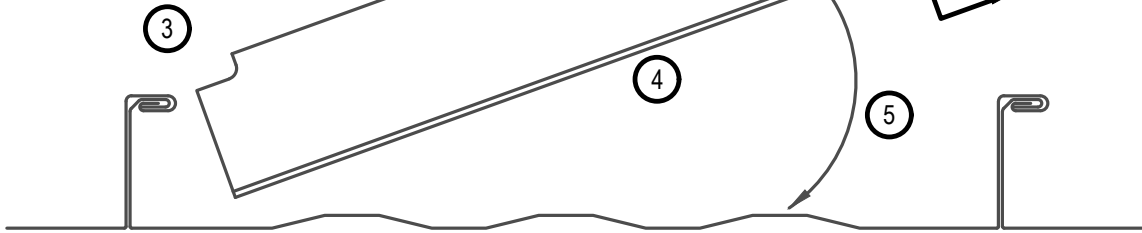
①



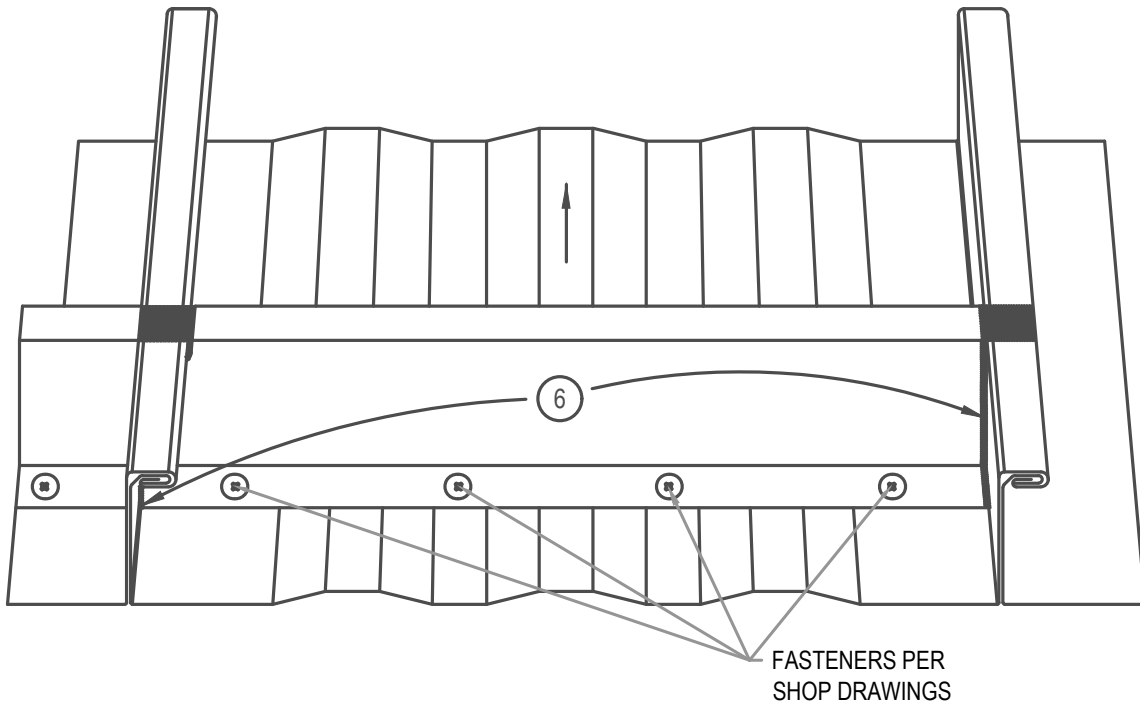
②



②



TWO CONTINUOUS
ROWS OF BUTYL TAPE
SECTION A-A



FASTENERS PER
SHOP DRAWINGS

- Step 1: Fold small lip 180°
 Step 2: Fold outer lip (approx.) 180°
 Step 3: Notch zee closure.
 Step 4: Apply two rows of butyl tape to underside of zee.
 Step 5: Install zee closure.
 Step 6: Seal all contact points of zee and panel legs. Also seal over top of panel leg.



ARCHITECTURAL Z INSTALLATION GUIDE

• **PROVEN** • **DEPENDABLE** • **SUSTAINABLE** •
METAL ENVELOPE SYSTEMS SINCE 1988

WWW.DMIMETALS.COM

Detail:

DL20 12-00-IA

Issue/Rev Date:

01/17

Scale:

3"=1'-0"