

DOUBLE-LOCK DL20 is a structural panel that is mechanically seamed during installation. The panel is an integral interlocking system by design that installs in one direction from a given starting point. A double male starter panel is available (for a minimal set-up fee) and may be installed in the middle of a roof area to achieve a symmetrical layout. DOUBLE-LOCK utilizes the traditional SMACNA standing seam "double-lock" plate.

Uses & Applications

Product uses include low to high slope roofing, vertical fascia, equipment screens, mansards, and wall panels. This system may also be installed on tapered and curved roof areas.

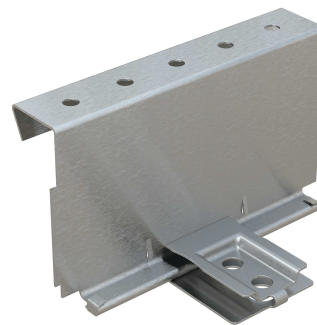
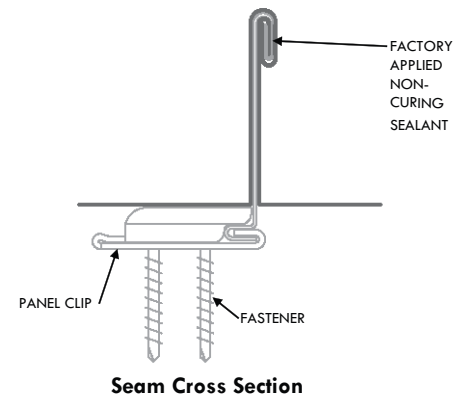
Advantages

- Factory Applied Non-Curing Sealant - for superior watertightness
- SMACNA Seam Design: A traditional and historical aesthetic appearance
- Mechanically seamed - may be installed on low slope applications down to 1/2:12 slope
- Expansion Clips - allows for thermal expansion and contraction
- Continuous Roll Formed Lengths - eliminates need for panel lap joints (4' min. panel length)
- Total System Warranties available - for total confidence

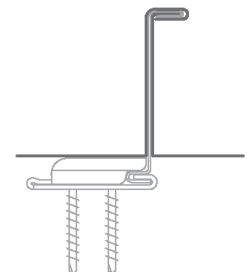
Performance Tested

- UL-580 Wind Uplift
- ASTM E1592 Uniform Static Air Pressure
- ASTM E1646 Water Penetration
- ASTM E1680 Air Leakage

Please consult DMI for applicability of test reports for your project.



**Low Floating
Expansion Clip**



**Optional Panel Profile
Single Lock**

800.828.1510 ■ www.dmimetals.com ■ sales@dmimetals.com

PROVEN. DEPENDABLE. SUSTAINABLE.

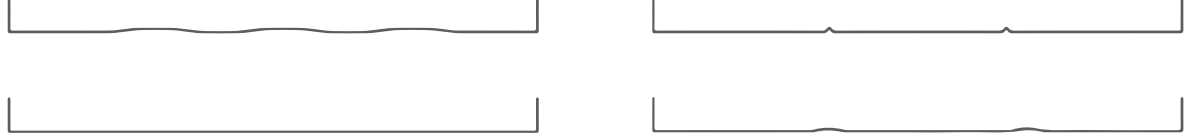
METAL ENVELOPE SYSTEMS SINCE 1988

DOUBLE-LOCK DL20



Project Name: _____
Architect: _____
Installing Contractor: _____
General Contractor: _____
Specification Section: _____

Stiffener Profile



DynaClad® PVDF Color Chart



Custom Colors Available

Colors shown are samples and may vary slightly from actual material. Please consult DMI Color Chart for stocking color availability.

†Metallic colors are directionally sensitive and therefore entire roof areas should be ordered at once time to ensure uniformity.

Double Male Panel is not available in Metallic Colors.

*Brite Red has a clear coat. **Premium colors carry an upcharge.

Panel Width

12"
13.7" (RHEINZINK® only)
16"
18" (17.625)
18" (17.65 for Copper)

Clip

Low Floating
Fixed
Long Fixed (Custom Application)

Substrate

24 ga. Galvalume®
22 ga. Galvalume®
.032 Aluminum
.040 Aluminum

16 oz. Copper
20 oz. Copper
24 ga. (.7MM) RHEINZINK®
22 ga. (.8MM) RHEINZINK®

Embossed:

Consult DMI for minimum quantities, upcharges, set up fees and extended lead times

Standard Finishes (N/A on Mill Finishes)

DynaClad® PVDF: _____
Acrylic Coated Galvalume (Acrylume®)
Clear Anodized Aluminum
prePATINA (RHEINZINK® only)

Premium Finishes*

DynaClad® Metallic PVDF: _____
DynaClad® Brite Red PVDF
DynaClad® Cobalt Blue PVDF
DynaClad® Standard Color PVDF w/ Clearcoat: _____
DynaClad® Premium Color PVDF w/ Clearcoat: _____
Custom Color: _____

*Premium Colors subject to minimum quantities, extended lead times and upcharges.
Consult DMI for details.

Warranty

Finish

DynaClad® Paint Finish
Galvalume® 20 Year - 6 Month (Substrate)
Aluminum Sheet 2 Year (Substrate)

Watertight

DynaClad® Metal Roofing System: _____
DynaClad® Metal Roofing System ND: _____

Warranties not available for Rheinzink®

Since 1988 Dimensional Metals, Inc. (DMI) has specialized in the manufacturing of architectural metal roof and wall panel systems as well as fabricated architectural sheet metal for the construction industry. We are backed by decades of proven metal envelope design, dependable Technical Field Services, and an Engineering Department delivering sustainable solutions. You are sure to find the product that will best enhance your design.

800.828.1510 ■ www.dmimetals.com ■ sales@dmimetals.com

PROVEN. DEPENDABLE. SUSTAINABLE.

METAL ENVELOPE SYSTEMS SINCE 1988

12302020