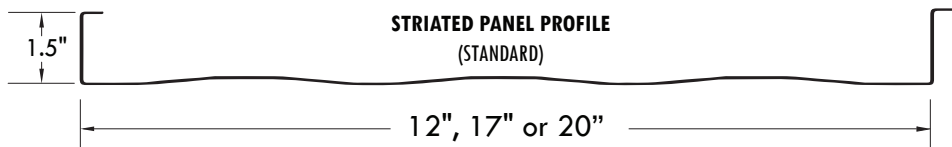
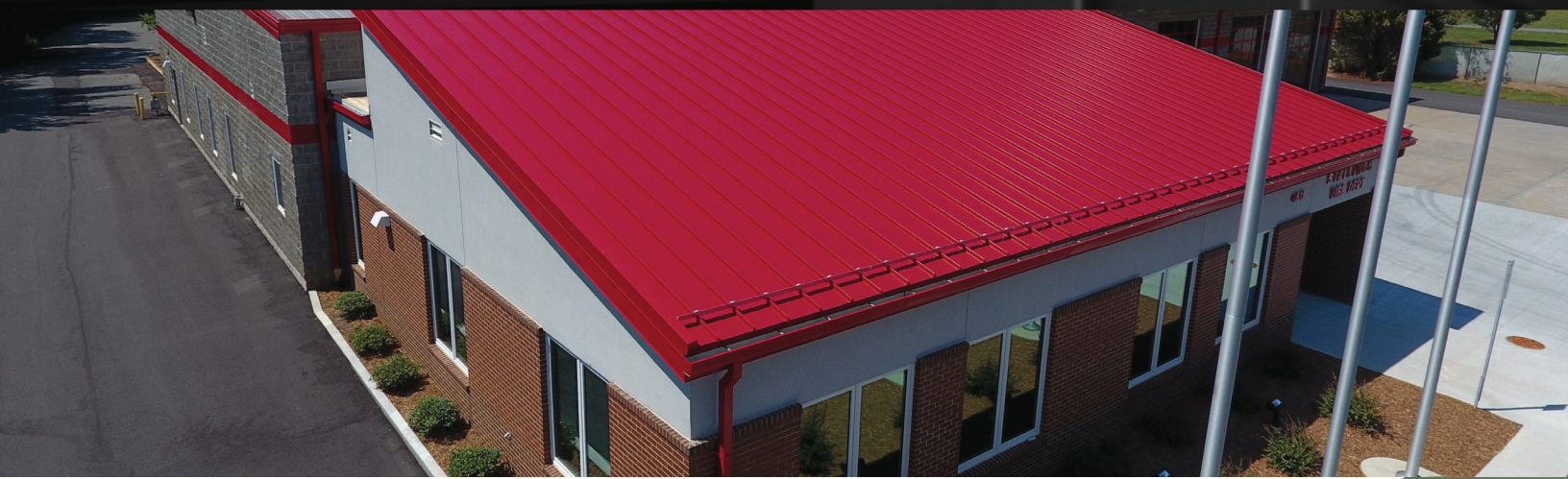




# STRUCTURAL PANEL DOUBLE-LOCK DL15



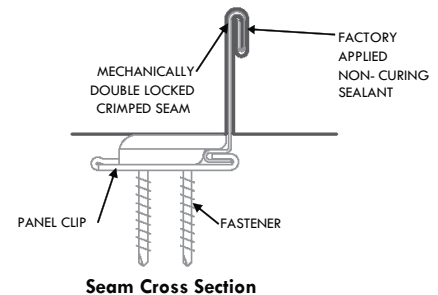
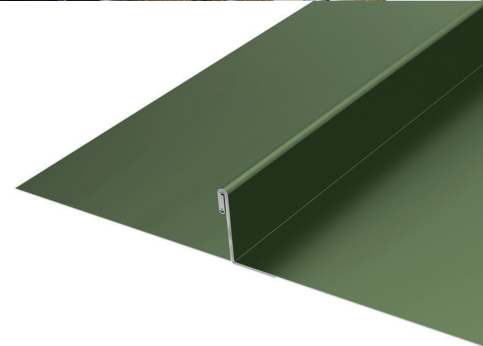
**DOUBLE-LOCK DL15** is a structural panel that is mechanically seamed during installation. The panel is an integral interlocking system by design that installs in one direction from a given starting point. A double male starter panel is available (for a minimal set-up fee) and may be installed in the middle of a roof area to achieve a symmetrical layout. DOUBLE-LOCK utilizes the traditional SMACNA standing seam “double-lock” plate.

## Uses & Applications

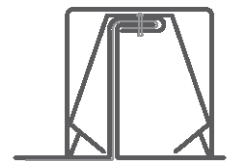
Product uses include low to high slope roofing, vertical fascia, equipment screens, mansards, and wall panels. This system may also be installed on tapered and curved roof areas.

## Advantages

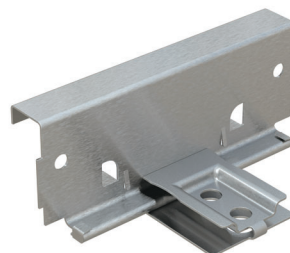
- Factory Applied Non-Curing Sealant - for superior watertightness
- SMACNA Seam Design: A traditional and historical aesthetic appearance
- Mechanically seamed - may be installed on low slope applications down to 1/2:12 slope
- Expansion Clips - allows for thermal expansion and contraction
- Continuous Roll Formed Lengths - eliminates need for panel lap joints (4' min. panel length)
- Total System Warranties available - for total confidence



Optional Seam Profile  
Single Lock



Optional Seam Profile  
Single Lock Batten



Low Floating  
Expansion Clip

## Performance Tested

- UL-580 Wind Uplift
- ASTM E1592 Uniform Static Air Pressure
- ASTM E1646 Water Penetration
- ASTM E1680 Air Leakage

Please consult DMI for applicability of test reports for your project.

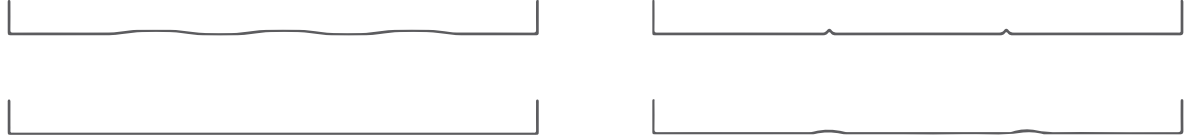
800.828.1510 • [www.dmimetals.com](http://www.dmimetals.com) • [sales@dmimetals.com](mailto:sales@dmimetals.com)

## PROVEN. DEPENDABLE. SUSTAINABLE.

METAL ENVELOPE SYSTEMS SINCE 1988

Project Name: \_\_\_\_\_  
 Architect: \_\_\_\_\_  
 Installing Contractor: \_\_\_\_\_  
 General Contractor: \_\_\_\_\_  
 Specification Section: \_\_\_\_\_

Stiffener Profile



## DynaClad® PVDF Color Chart



### Custom Colors Available

Colors shown are samples and may vary slightly from actual material. Please consult DMI Color Chart for stocking color availability.

†Metallic colors are directionally sensitive and therefore entire roof areas should be ordered at once time to ensure uniformity.

Double Male Panel is not available in Metallic Colors.

\*Brite Red has a clear coat. \*\*Premium colors carry an upcharge.

### Panel Width

12"  
 14" (Copper only)  
 16" (15.75 for RHEINZINK®)  
 17"  
 20"

### Clip

Low Floating  
 Fixed

### Substrate

24 ga. Galvalume®  
 .032 Aluminum  
 16 oz. Copper  
 20 oz. Copper  
 24 ga. (.7MM) RHEINZINK®  
 22 ga. (.8MM) RHEINZINK®

### Embossed:

Consult DMI for minimum quantities, upcharges, set up fees and extended lead times

### Standard Finishes (N/A on Mill Finishes)

DynaClad® PVDF: \_\_\_\_\_  
 Acrylic Coated Galvalume (Acrylume®)  
 Clear Anodized Aluminum  
 prePATINA (RHEINZINK® only)

### Premium Finishes\*

DynaClad® Metallic PVDF: \_\_\_\_\_  
 DynaClad® Brite Red PVDF  
 DynaClad® Cobalt Blue PVDF  
 DynaClad® Standard Color PVDF w/ Clearcoat: \_\_\_\_\_  
 DynaClad® Premium Color PVDF w/ Clearcoat: \_\_\_\_\_  
 Custom Color: \_\_\_\_\_

\*Premium Colors subject to minimum quantities, extended lead times and upcharges.  
 Consult DMI for details.

### Warranty

#### Finish

DynaClad® Paint Finish  
 Galvalume® 20 Year - 6 Month (Substrate)  
 Aluminum Sheet 2 Year (Substrate)

#### Watertight

DynaClad® Metal Roofing System: \_\_\_\_\_  
 DynaClad® Metal Roofing System ND: \_\_\_\_\_

Warranties not available for RheinZink®

Since 1988 Dimensional Metals, Inc. (DMI) has specialized in the manufacturing of architectural metal roof and wall panel systems as well as fabricated architectural sheet metal for the construction industry. We are backed by decades of proven metal envelope design, dependable Technical Field Services, and an Engineering Department delivering sustainable solutions. You are sure to find the product that will best enhance your design.

800.828.1510 • [www.dmimetals.com](http://www.dmimetals.com) • [sales@dmimetals.com](mailto:sales@dmimetals.com)

## PROVEN. DEPENDABLE. SUSTAINABLE.

METAL ENVELOPE SYSTEMS SINCE 1988