

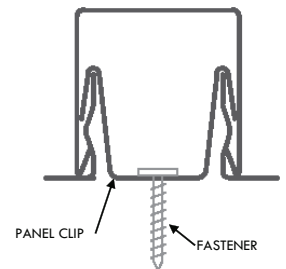
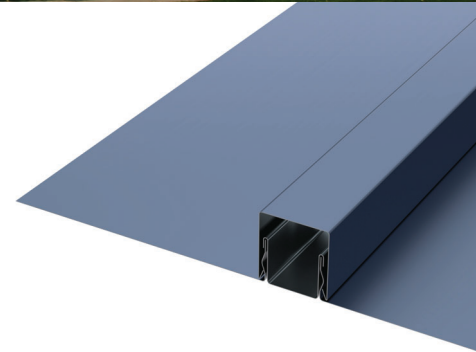
**BATTEN SEAM BS15** is an advanced design non-structural snap-on-batten system. The system is designed with two components: the panel and the batten cap. BATTEN-SEAM BS15 is a non-directional panel system allowing installers more control during installation over batten layout and symmetry of the panel area.

### Uses & Applications

Product uses include roofs with slopes as low as 3:12, vertical fascia, equipment screens, mansards, and wall panels. This system may also be installed on tapered roof areas.

### Advantages

- Continuous Interlocking Batten - high batten hold-down strength
- Expansion Clips - allows for thermal expansion and contraction
- Square Batten Design - an aesthetic design alternate to the Snap-on Seam
- Continuous Interlocking Seam Cap - no seam disengagement
- Continuous Roll Formed Lengths - eliminates need for panel lap joints (4' min. panel length)



Seam Cross Section



Panel Clip

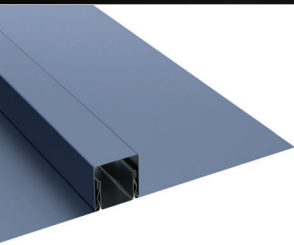
Note: Watertight Warranty is not available for this profile.

800.828.1510 • [www.dmimetals.com](http://www.dmimetals.com) • [sales@dmimetals.com](mailto:sales@dmimetals.com)

**PROVEN. DEPENDABLE. SUSTAINABLE.**

METAL ENVELOPE SYSTEMS SINCE 1988

# BATTEN SEAM BS15



Project Name: \_\_\_\_\_  
 Architect: \_\_\_\_\_  
 Installing Contractor: \_\_\_\_\_  
 General Contractor: \_\_\_\_\_  
 Specification Section: \_\_\_\_\_

Stiffener Profile



## DynaClad® PVDF Color Chart

|  |   |   |   |   |
|--|---|---|---|---|
|    |    |    |    |    |
| PUTTY<br>SRI = 77  | SANDSTONE<br>SRI = 77   | DOVE GREY<br>SRI = 61   | PATINA COPPER<br>SRI = 58   | WHITE<br>SRI = 85   |
|    |    |    |    |    |
| BEIGE<br>SRI = 53  | STONE<br>SRI = 49   | SLATE GREY<br>SRI = 47  | TERRA COTTA<br>SRI = 43   | COBALT BLUE<br>SRI = 20   |
|  |  |  |  |  |
| MUSKET GREY<br>SRI = 35  | SEAPORT<br>SRI = 35   | COLONIAL RED<br>SRI = 34  | SLATE BLUE<br>SRI = 34  | BRITE RED*<br>SRI = 44  |
|  |  |  |  |  |
| BURGUNDY<br>SRI = 34   | HEMLOCK GREEN<br>SRI = 31   | LEAF GREEN<br>SRI = 31  | CHARCOAL GREY<br>SRI = 31   | METALLIC SILVER<br>SRI = 53   |
|  |  |  |  |  |
| SPARTAN BRONZE<br>SRI = 30   | CLASSIC BRONZE<br>SRI = 29  | MATTE BLACK<br>SRI = 29   | EVERGREEN<br>SRI = 28   | CHAMPAGNE<br>SRI = 51   |
|  |  |  |  |  |
| DARK BRONZE<br>SRI = 27  | ROYAL BLUE<br>SRI = 27  | HARTFORD GREEN<br>SRI = 26  | BROWN<br>SRI = 25   | METALLIC COPPER<br>SRI = 49   |
|  |   |   |   |  |
|  |   |   |   | WEATHERED ZINC<br>SRI = 37  |

Metallic Colors + Premium Colors \*\*

### Custom Colors Available

Colors shown are samples and may vary slightly from actual material.  
 Please consult DMI Color Chart for stacking color availability.

†Metallic colors are directionally sensitive and therefore entire roof areas should be ordered at once time to ensure uniformity.

\*Brite Red has a clear coat. \*\*Premium colors carry an upcharge.

### Panel Width

12"  
16"  
18"

### Clip

Expansion

### Substrate

24 ga. Galvalume®  
 22 ga. Galvalume®  
 .032 Aluminum  
 .040 Aluminum\*

16 oz. Copper  
 20 oz. Copper

### Embossed:

\*Seam Caps available in 24 ga. & .032 aluminum only

Consult DMI for minimum quantities, upcharges, set up fees and extended lead times

### Standard Finishes (N/A on Mill Finishes)

DynaClad® PVDF: \_\_\_\_\_  
 Acrylic Coated Galvalume (Acrylume®)  
 Clear Anodized Aluminum

### Premium Finishes\*

DynaClad® Metallic PVDF: \_\_\_\_\_  
 DynaClad® Brite Red PVDF  
 DynaClad® Cobalt Blue PVDF  
 DynaClad® Standard Color PVDF w/ Clearcoat: \_\_\_\_\_  
 DynaClad® Premium Color PVDF w/ Clearcoat: \_\_\_\_\_  
 Custom Color: \_\_\_\_\_

\*Premium Colors subject to minimum quantities, extended lead times and upcharges.  
 Consult DMI for details.

### Warranty

#### Finish

DynaClad® Paint Finish  
 Galvalume® 20 Year - 6 Month (Substrate)  
 Aluminum Sheet 2 Year (Substrate)

Since 1988 Dimensional Metals, Inc. (DMI) has specialized in the manufacturing of architectural metal roof and wall panel systems as well as fabricated architectural sheet metal for the construction industry. We are backed by decades of proven metal envelope design, dependable Technical Field Services, and an Engineering Department delivering sustainable solutions. You are sure to find the product that will best enhance your design.

800.828.1510 • [www.dmimetals.com](http://www.dmimetals.com) • [sales@dmimetals.com](mailto:sales@dmimetals.com)

## PROVEN. DEPENDABLE. SUSTAINABLE.

METAL ENVELOPE SYSTEMS SINCE 1988

03162021