

7.2 PANEL WP72 symmetrical design allows for versatility in applications while providing a clean industrial look. It is an exposed fastener panel utilized for wall and roof applications. It has a 1-1/2" rib height at 7.2" o.c. and 36" of panel coverage with a purlin bearing leg.

ROOF ASSEMBLIES

7.2 PANEL WP72 can be applied over various wall and roof assemblies including: open framing and solid substrates.

PRODUCT USES AND APPLICATIONS

Product uses include vertical and horizontal wall panels, equipment screens, mansards and roofing with roof slopes as low as 2:12. Excellent panel for wall retro-fit applications.

STANDARD PRODUCT OFFERINGS

24 ga., 22 ga., 20 ga., 18 ga. Steel, and .032, .040, .050 Aluminum
 Embossing available
 Perforations available (Aluminum and Stainless Steel)

PERFORMANCE TESTED

- ASTM E283 Air Leakage
 - ASTM E331 Water Penetration
- Mitered Corners are available.

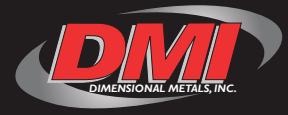
LOAD TABLE - UNIFORM SPANS (PSF)

Panel Gage	Span	Span (Feet)					
		4.00	5.00	6.00	7.00	8.00	9.00
24 (50 ksi)	3	70.00	60.00	50.00	40.00	30.00	20.00
22 (50 ksi)	3	120.00	100.00	80.00	55.00	40.00	30.00
24 (50 ksi)	2	70.00	60.00	50.00	40.00	30.00	25.00
22 (50 ksi)	2	110.00	90.00	70.00	50.00	40.00	30.00

Table for live load, no wind increase included. Deflection limit = L/240. Analysis per AISI 2001 manual. Additional spans available - Contact DMI

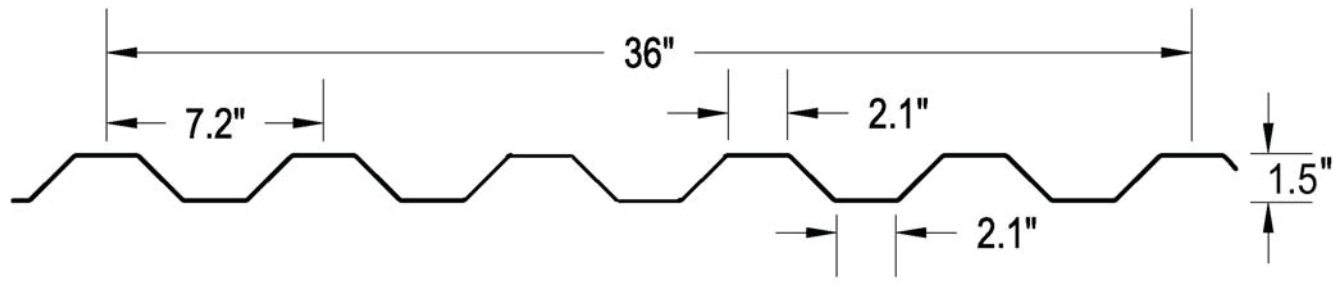
Watertightness warranty available for wall applications only.

7.2-PANEL SUBMITTAL



PROJECT NAME: _____
ARCHITECT: _____
INSTALLING CONTRACTOR: _____
GENERAL CONTRACTOR: _____
SPECIFICATION SECTION: _____

PROFILE



DynaClad® Standard Colors (IN ALPHABETICAL ORDER)	STOCKED AT DMI					
	24 GAGE GALVALUME	22 GAGE GALVALUME	.032 ALUM. 3105 H14	.040 ALUM. 3105 H14	.050 ALUM. 3105 H14	.063 ALUM. 3105 H14
AGED COPPER*	●		●			
BEIGE	●		●		●	
BRITE RED*	●		●	●		
BROWN	●		●	●		
BURGUNDY	●		●			
CHAMPAGNE*	●		●			
CHARCOAL GREY	●		●	●		
CLASSIC BRONZE	●		●	●		
COBALT BLUE	●		●			
COLONIAL RED	●		●	●		
DARK BRONZE	●	●	●	●	●	●
DOVE GREY	●		●	●		
EVERGREEN	●		●	●		
HARTFORD GREEN	●		●			
HEMLOCK GREEN	●		●			
LEAF GREEN	●		●			
MATTE BLACK	●		●	●		
METALLIC COPPER*	●		●			
METALLIC SILVER*	●		●			
MUSKET GREY	●		●	●		
PATINA COPPER	●		●	●		
PUTTY	●	●	●	●	●	
ROYAL BLUE	●		●	●		
SANDSTONE	●	●	●	●	●	
SEAPORT	●		●	●		
SLATE BLUE	●		●			
SLATE GREY	●		●		●	
SPARTAN BRONZE	●		●	●		
STONE	●		●	●		
TERRA COTTA	●		●			
WEATHERED ZINC*	●		●			
WHITE	●	●	●	●	●	●
MILL FINISHED ALUM.			●	●	●	●
ACRYLUME®	●	●				
CLEAR ANODIZED			●	●		

SUBSTRATE

24 GA. GALVALUME OTHER: _____
 22 GA. GALVALUME
 20 GA. G-90
 18 GA. G-90
 .032 ALUMINUM
 .040 ALUMINUM
 .050 ALUMINUM

EMBOSSED

YES
 NO
Consult DMI for minimum quantities, upcharges, set up fees and extended lead times

STANDARD FINISHES

DYNACLAD® PVDF: _____
 ACRYLIC COATED GALVALUME (ACRYLUME)
 MILL FINISH ALUMINUM
 CLEAR ANODIZED ALUMINUM

PREMIUM FINISHES*

DYNACLAD® METALLIC PVDF: _____
 DYNACLAD® BRITE RED PVDF
 DYNACLAD® STANDARD COLOR PVDF W/CLEARCOAT (3-COAT): _____
 DYNACLAD® METALLIC COLOR PVDF W/CLEARCOAT (3-COAT): _____
 CUSTOM COLOR: _____
*Premium Colors subject to minimum quantities, extended lead times and upcharges. Consult DMI for details.

WARRANTY

DYNACLAD® PAINT FINISH
 GALVALUME 20 YEAR - 6 MONTH (SUBSTRATE)
 WALL PANEL WEATHERTIGHTNESS WARRANTY _____

Non-Stock colors available subject to minimum quantities, additional lead times and upcharges.
 * Denotes Premium Color - subject to additional costs.

Dimensional Metals, Inc. has specialized in the manufacturing of Architectural Metal Panel Systems and Fabricated Architectural Sheet Metal for the construction industry since 1988. We use the most technologically advanced Fixed Base Roll-Forming Equipment to deliver complete in-house quality control over the manufacture of our products.